

Job Name: 25-2601 Spring Creek Parkway Phase 2 (Storm)
 Job Location: Clarksville, TN
 Contractor: Byard Construction, LLC

Plant: Beaver Dam
 2/23/2026 8:54:08 AM

Tech: S. Felletter
 PC: A. Chambers



Structure ID: CB-48

P2 MH072LD10SP

MH FLAT TOP - TDOT NO 12 (28"x34" Hole) F/F

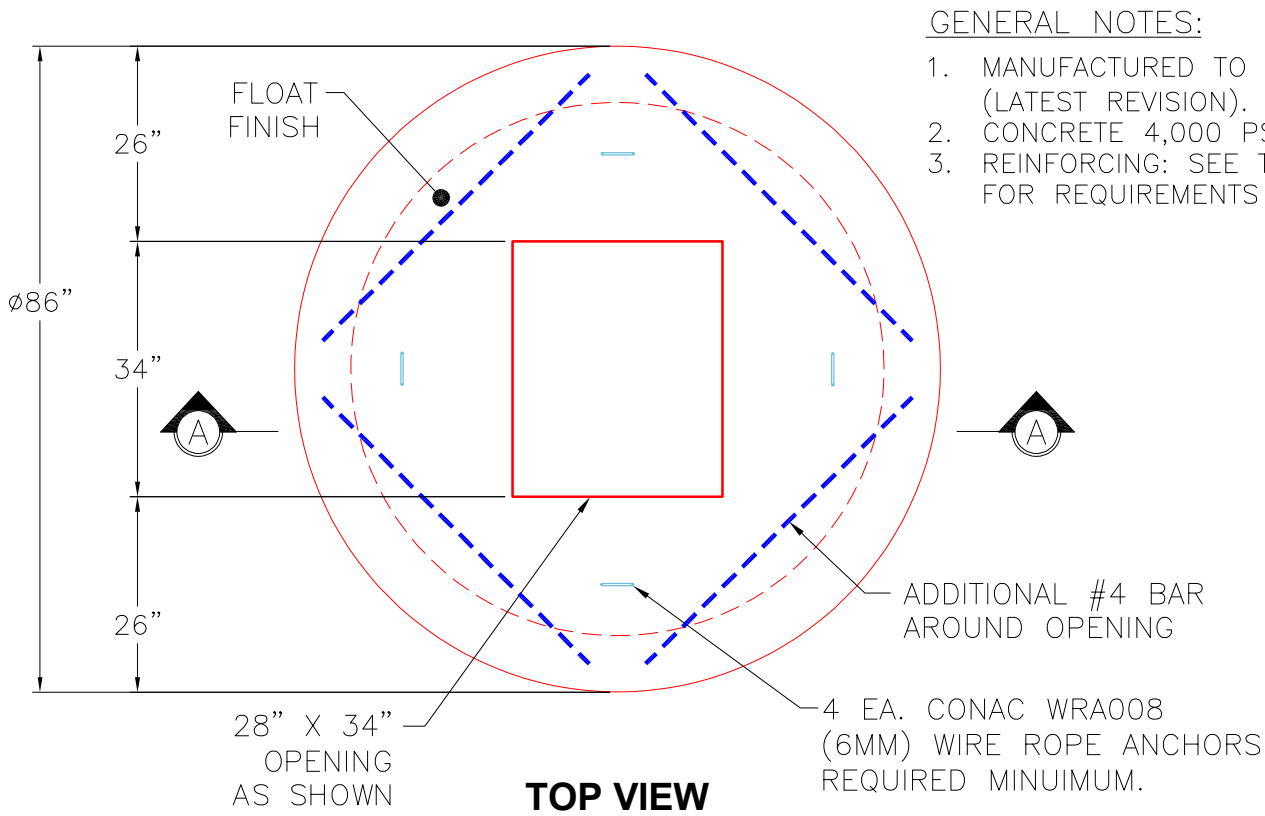
- P3) 28" x 34" - CASTING HEIGHT - 7"
- P2) 72" - MH FLAT TOP - TDOT NO 12 (28"x34" Hole) F/F - 10"
- P1) 72" - MH BASE Custom Ht F/n - 53"
- 1) 72" - Conseal CS-102 1.00"
- 1) 28" x 34" - Conseal CS-102 1.00"
- 1) Hole - 40
- 2) Hole - 39
- 1) Hole - 6

0 lb
 4406 lb
 9364 lb
 0 lb
 0 lb
 0 lb
 0 lb
 0 lb
 0 lb

Structure Total: 13770 lb

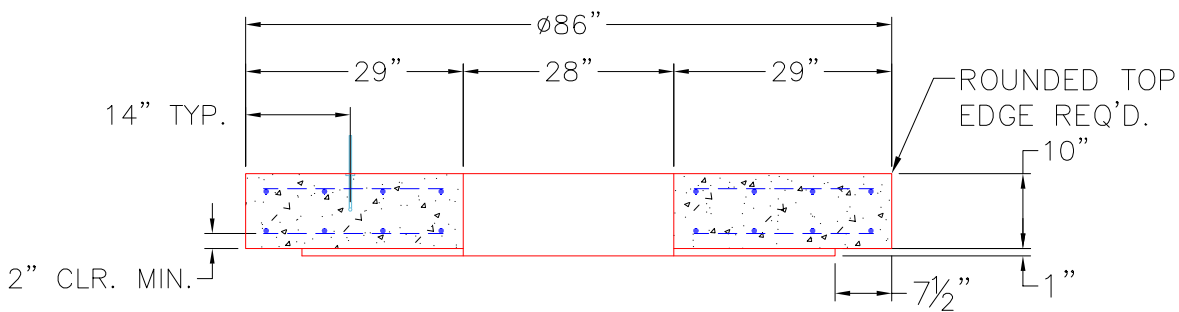
- Structure Notes:**
1. PER TDOT D-CB-12RB / ASTM C478 SPEC'S.
 2. CONCRETE = 4,000 PSI AT 28 DAYS.
 3. NO INVERT CHANNEL.
 4. CASTING BY OTHERS (TDOT TY. 12 - JBS 3123 MOD F/G/H).

- REINFORCING PER ASTM A615 (GRADE 60).
 ** PER TDOT STD DRAWING D-CB-12RB **
- TOP SLAB - DBL MAT #5 BARS.
 - RISER (As .18)
 - FLOOR (As .62) #5 BARS AT 6" C.C.E.W.



GENERAL NOTES:

1. MANUFACTURED TO ASTM C-478 (LATEST REVISION).
2. CONCRETE 4,000 PSI AT 28 DAYS.
3. REINFORCING: SEE TDOT D-CB-12RB FOR REQUIREMENTS



Coating (Int): Coating (Ext):	Seam Up: Flat Seam Dn: Flat	Wall Thickness: 7"	Height (Ext): 10"	Weight (Net): 4406 lb Volume (Net): 1.12cu.yd
----------------------------------	--------------------------------	--------------------	-------------------	--