

Job Name: 25-2601 Spring Creek Parkway Phase 2 (Storm)  
 Job Location: Clarksville, TN  
 Contractor: Byard Construction, LLC

Plant: Beaver Dam

Tech: S. Felletter

2/23/2026 8:54:13 AM

PC: A. Chambers



**Structure ID: CB-47**

**P2 MH060LD10SP**

**MH FLAT TOP - TDOT NO 12 (28"x34" Hole) F/F**

- P3) 28" x 34" - CASTING HEIGHT - 7"
- P2) 60" - MH FLAT TOP - TDOT NO 12 (28"x34" Hole) F/F - 10"
- P1) 60" - MH BASE Custom Ht F/n - 52"
- 1) 60" - Conseal CS-102 1.00"
- 1) 28" x 34" - Conseal CS-102 1.00"
- 2) Hole - 40

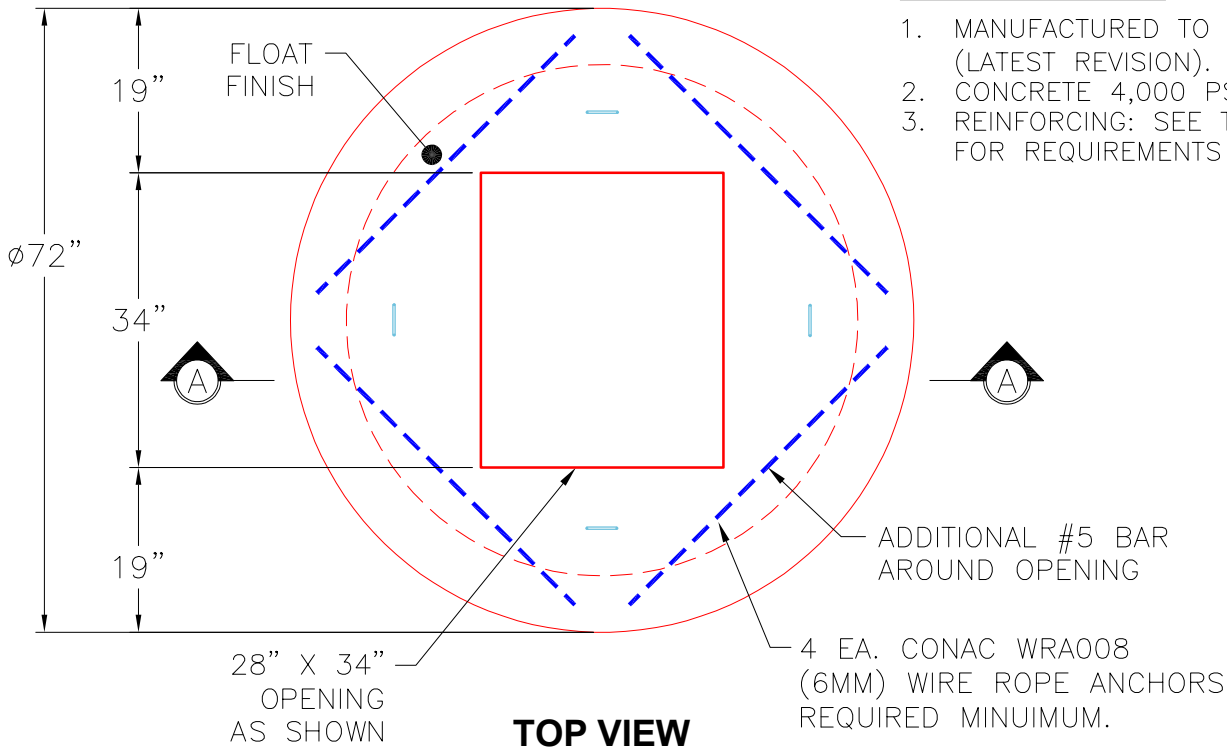
0 lb  
 3417 lb  
 6798 lb  
 0 lb  
 0 lb  
 0 lb  
 0 lb

Structure Total: 10215 lb

Structure Notes:

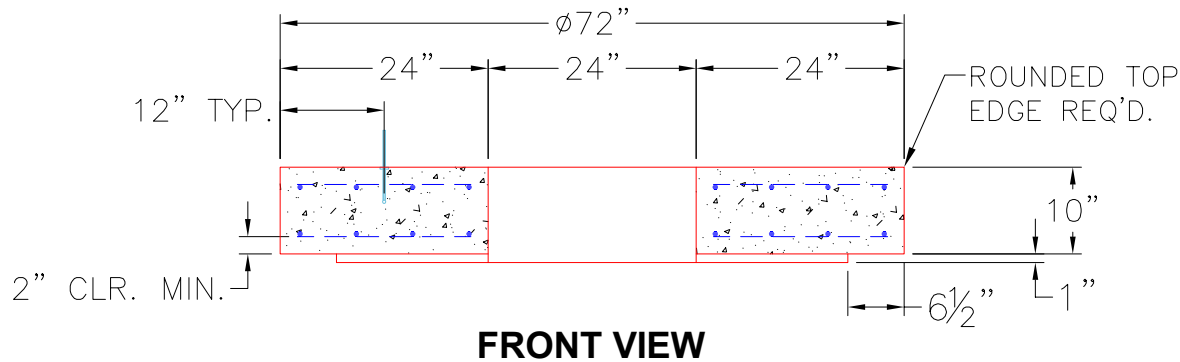
1. PER TDOT D-CB-12RB / ASTM C478 SPEC'S.
2. CONCRETE = 4,000 PSI AT 28 DAYS.
3. NO INVERT CHANNEL.
4. CASTING BY OTHERS (TDOT TY. 12 - JBS 3123 MOD F/G/H).

REINFORCING PER ASTM A615 (GRADE 60).  
 \*\* PER TDOT STD DRAWING D-CB-12RB \*\*  
 - TOP SLAB - DBL MAT #5 BARS.  
 - RISER (As .18)  
 - FLOOR (As .62) #5 BARS AT 6" C.C.E.W.



GENERAL NOTES:

1. MANUFACTURED TO ASTM C-478 (LATEST REVISION).
2. CONCRETE 4,000 PSI AT 28 DAYS.
3. REINFORCING: SEE TDOT D-CB-12RB FOR REQUIREMENTS



Coating (Int):  
 Coating (Ext):

Seam Up: Flat  
 Seam Dn: Flat

Wall Thickness: 6"

Height (Ext): 10"

Weight (Net): 3417 lb  
 Volume (Net): 0.87cu.yd