

Job Name: 25-2601 Spring Creek Parkway Phase 2 (Storm)
 Job Location: Clarksville, TN
 Contractor: Byard Construction, LLC

Plant: Beaver Dam
 2/23/2026 8:54:09 AM

Tech: S. Felletter
 PC: A. Chambers



Structure ID: CB-44

P3 MH96LD10SP

MH FLAT TOP - TDOT NO 12 (28"x34" Hole) F/F

- P4) 28" x 34" - CASTING HEIGHT - 7"
- P3) 96" - MH FLAT TOP - TDOT NO 12 (28"x34" Hole) F/F - 10"
- P2) 96" - MH RISER F/G - 96"
- P1) 96" - MH MONOBASE 12F, Custom Ht T/n - 76"
- 2) 96" - Conseal CS-102 1.00"
- 1) 28" x 34" - Conseal CS-102 1.00"
- 2) Hole - 60
- 1) Hole - 6

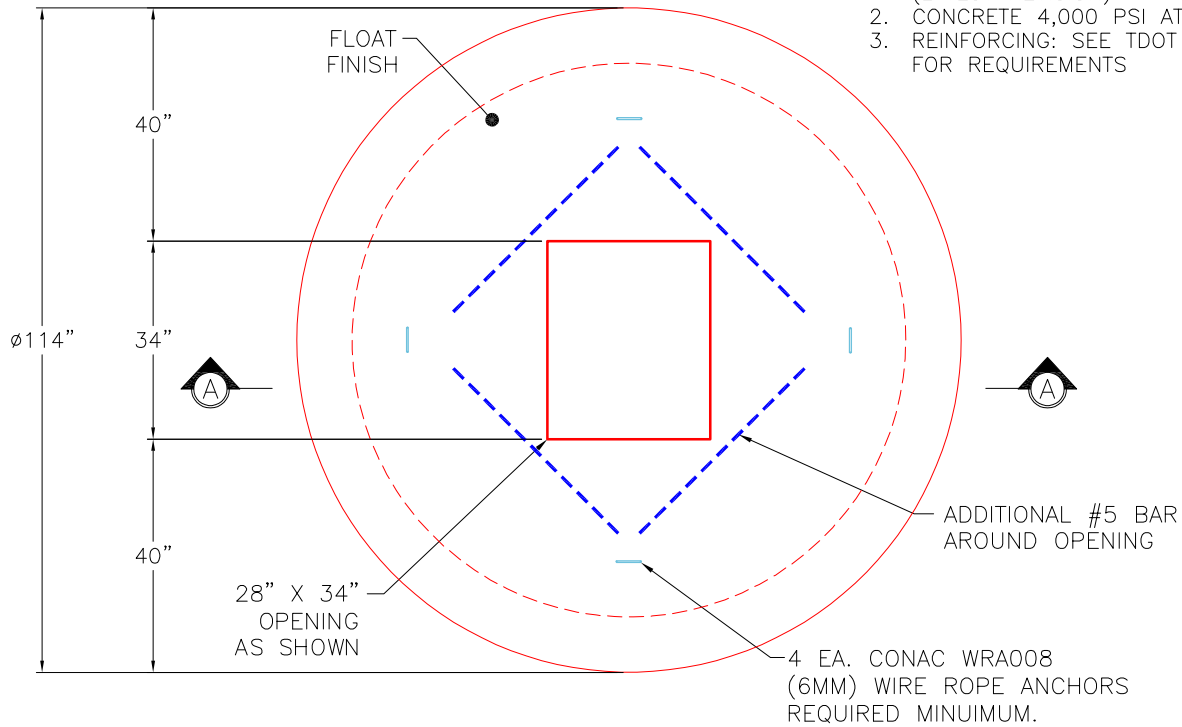
0 lb
 7767 lb
 23894 lb
 24656 lb
 0 lb
 0 lb
 0 lb
 0 lb
 0 lb
 Structure Total: 56317 lb

- Structure Notes:**
1. PER TDOT D-CB-12RC / ASTM C478 SPEC'S.
 2. CONCRETE = 4,000 PSI AT 28 DAYS.
 3. NO INVERT CHANNEL.
 4. CASTING BY OTHERS (TDOT TY. 12 - JBS 3123 MOD F/G/H).

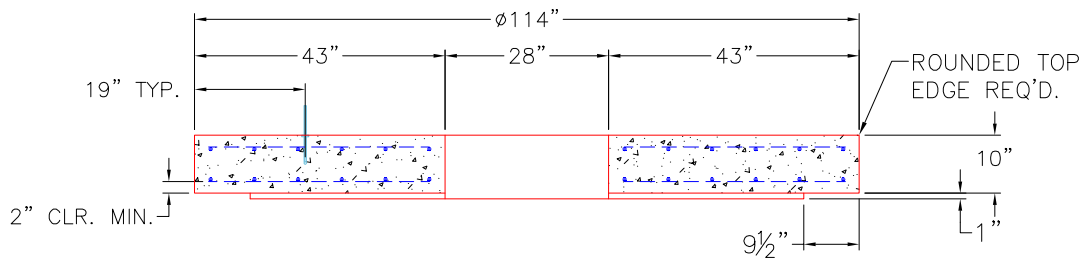
- REINFORCING PER ASTM A615 (GRADE 60).
 ** PER TDOT STD DRAWING D-CB-12RC **
- TOP SLAB - DBL MAT #5 BARS.
 - RISER (As .18)
 - FLOOR (As .62) #5 BARS AT 6" C.C.E.W.

GENERAL NOTES:

1. MANUFACTURED TO ASTM C-478 (LATEST REVISION).
2. CONCRETE 4,000 PSI AT 28 DAYS.
3. REINFORCING: SEE TDOT D-CB-12RC FOR REQUIREMENTS



TOP VIEW



FRONT VIEW

Coating (Int):
 Coating (Ext):

Seam Up: Flat
 Seam Dn: Flat

Wall Thickness: 9"

Height (Ext): 10"

Weight (Net): 7767 lb
 Volume (Net): 1.98cu.yd