

Job Name: 25-2601 Spring Creek Parkway Phase 2 (Storm)
 Job Location: Clarksville, TN
 Contractor: Byard Construction, LLC

Plant: Beaver Dam
 2/23/2026 8:54:07 AM

Tech: S. Felletter
 PC: A. Chambers



Structure ID: CB-43

P2 MH072LD10SP

MH FLAT TOP - TDOT NO 12 (28"x34" Hole) F/F

- P3) 28" x 34" - CASTING HEIGHT - 7"
- P2) 72" - MH FLAT TOP - TDOT NO 12 (28"x34" Hole) F/F - 10"
- P1) 72" - MH BASE Custom Ht F/n - 50"
- 1) 72" - Conseal CS-102 1.00"
- 1) 28" x 34" - Conseal CS-102 1.00"
- 1) Hole - 40
- 1) Hole - 39
- 1) Hole - 6

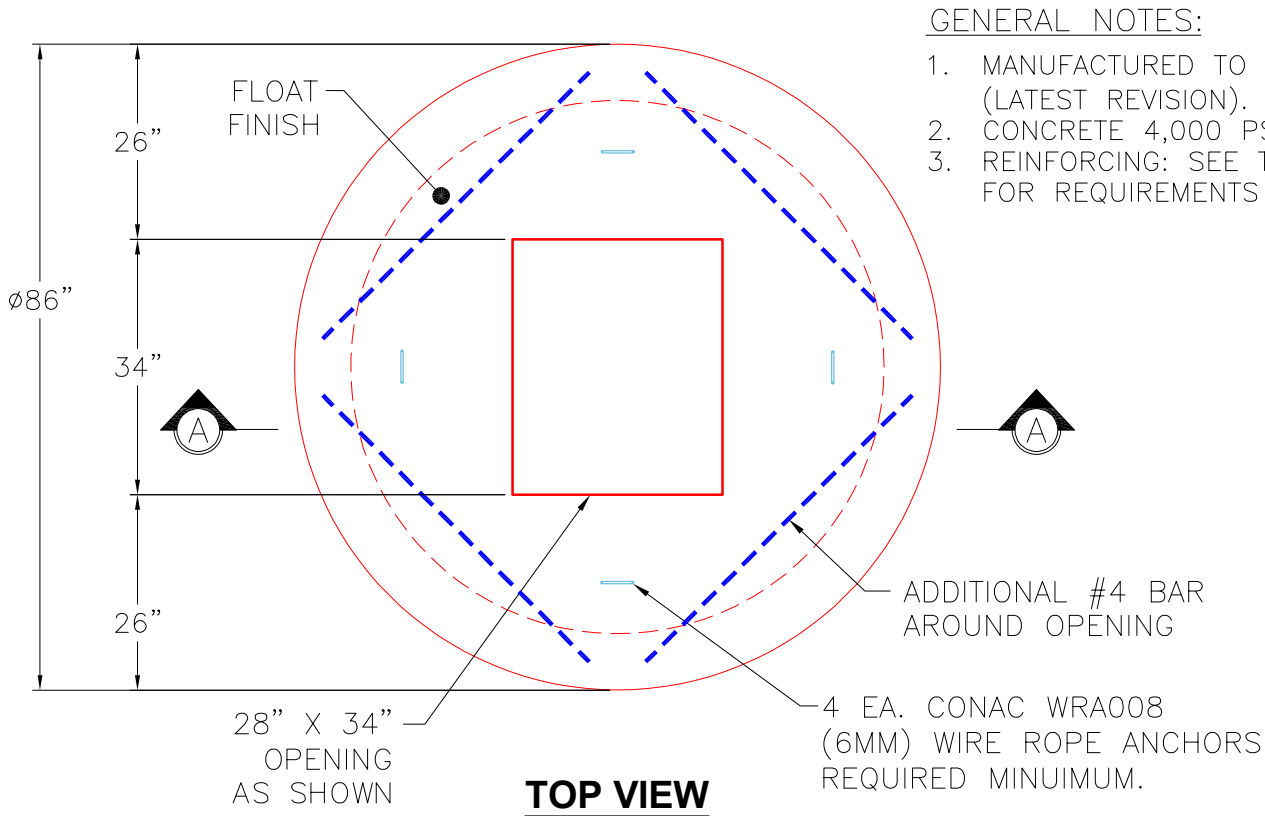
0 lb
 4406 lb
 9662 lb
 0 lb
 0 lb
 0 lb
 0 lb
 0 lb
 0 lb
 14068 lb

Structure Total:

Structure Notes:

1. PER TDOT D-CB-12RB / ASTM C478 SPEC'S.
2. CONCRETE = 4,000 PSI AT 28 DAYS.
3. NO INVERT CHANNEL.
4. CASTING BY OTHERS (TDOT TY. 12 - JBS 3123 MOD F/G/H).

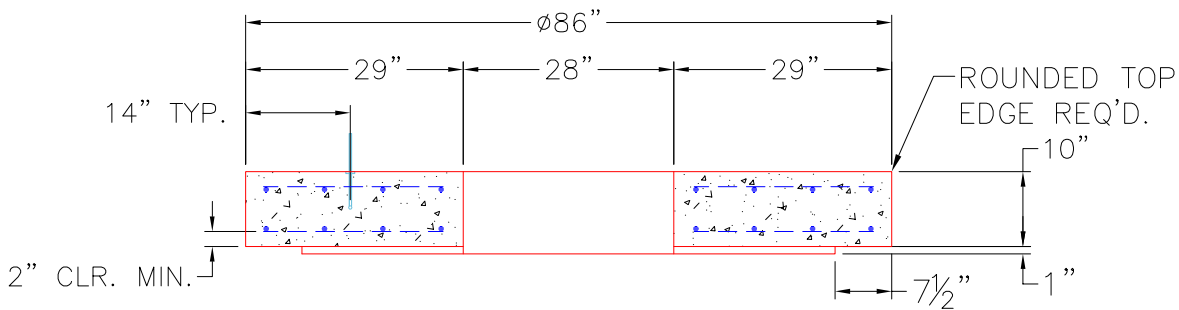
REINFORCING PER ASTM A615 (GRADE 60).
 ** PER TDOT STD DRAWING D-CB-12RB **
 - TOP SLAB - DBL MAT #5 BARS.
 - RISER (As .18)
 - FLOOR (As .62) #5 BARS AT 6" C.C.E.W.



GENERAL NOTES:

1. MANUFACTURED TO ASTM C-478 (LATEST REVISION).
2. CONCRETE 4,000 PSI AT 28 DAYS.
3. REINFORCING: SEE TDOT D-CB-12RB FOR REQUIREMENTS

TOP VIEW



FRONT VIEW

Coating (Int):
 Coating (Ext):

Seam Up: Flat
 Seam Dn: Flat

Wall Thickness: 7"

Height (Ext): 10"

Weight (Net): 4406 lb
 Volume (Net): 1.12cu.yd