

Job Name: 25-2601 Spring Creek Parkway Phase 2 (Storm)
 Job Location: Clarksville, TN
 Contractor: Byard Construction, LLC

Plant: Beaver Dam
 2/23/2026 8:54:12 AM

Tech: S. Felletter
 PC: A. Chambers



Structure ID: CB-20A

P2 BX048048-10LD08W-SP

BX FLAT LID 8"W - TDOT 12SB (28"x34" Hole) F/F

- P3) 28" x 34" - CASTING HEIGHT - 7"
- P2) 48" x 48" - BX FLAT LID 8"W - TDOT 12SB (28"x34" Hole) F/F - 10"
- P1) 48" x 48" - BOX BASE 8inW, 8inF F/n - 54"
- 1) 48" x 48" - Conseal CS-102 1.00"
- 1) 28" x 34" - Conseal CS-102 1.00"
- 1) Hole - 40
- 1) Hole - 32

0 lb
 2638 lb
 9486 lb
 0 lb
 0 lb
 0 lb
 0 lb

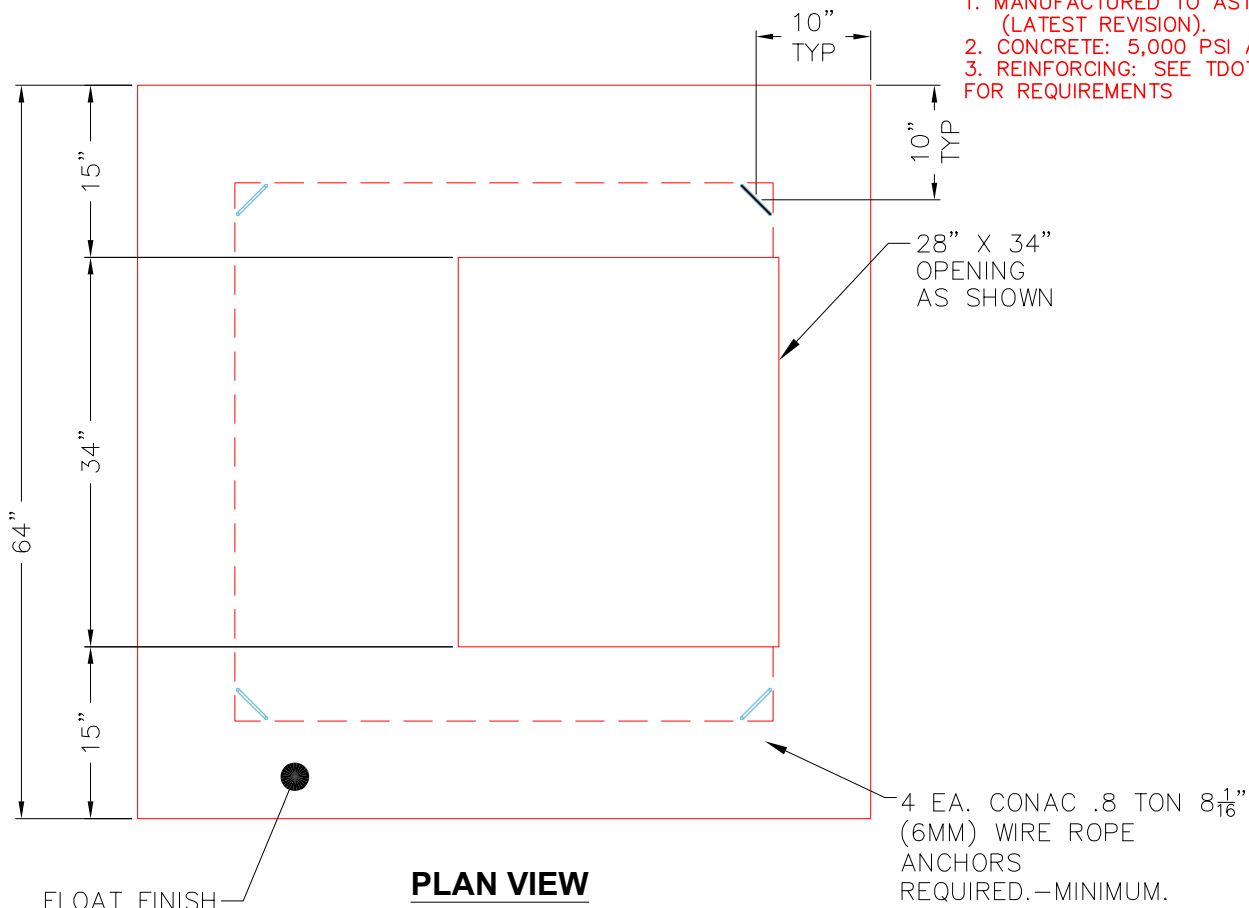
 Structure Total: 12124 lb

- Structure Notes:**
1. PER TDOT D-CB-12SB / ASTM C913 SPEC'S.
 2. CONCRETE = 4,000 PSI AT 28 DAYS.
 3. NO INVERT CHANNEL.
 4. CASTING BY OTHERS (TDOT TY.12 - JBS 3123 MOD F/G/H).

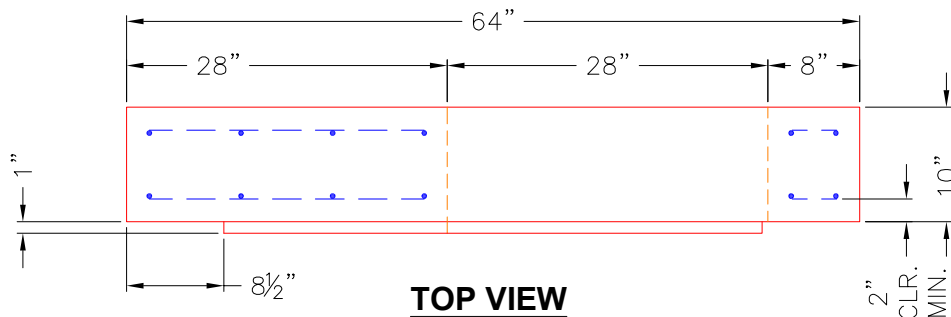
REINFORCING PER ASTM A615 (GRADE 60).
 ** SEE TDOT STD DRAWING D-CB-12SB **
 - TOP SLAB - DBL MAT #5 BARS.
 - WALLS (As .47) #5 BARS AT 8" C.C.E.W.
 - FLOOR (As .47) #5 BARS AT 8" C.C.E.W.

NOTES:

1. MANUFACTURED TO ASTM C-913 (LATEST REVISION).
2. CONCRETE: 5,000 PSI AT 28 DAYS.
3. REINFORCING: SEE TDOT D-CB-12SB FOR REQUIREMENTS



PLAN VIEW



TOP VIEW

Coating (Int):
 Coating (Ext):

Seam Up: Flat
 Seam Dn: Flat

Wall Thickness: 8"

Height (Ext): 10"

Weight (Net): 2638 lb
 Volume (Net): 0.67cu.yd