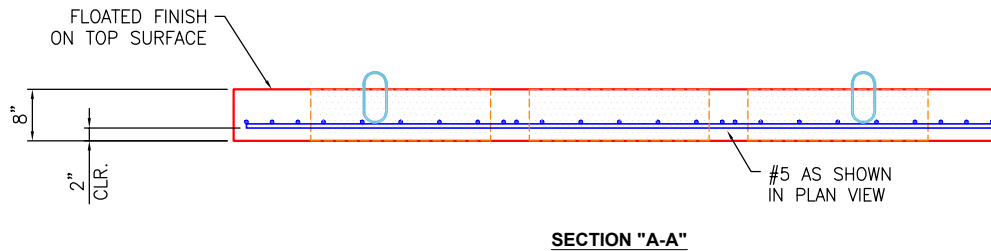
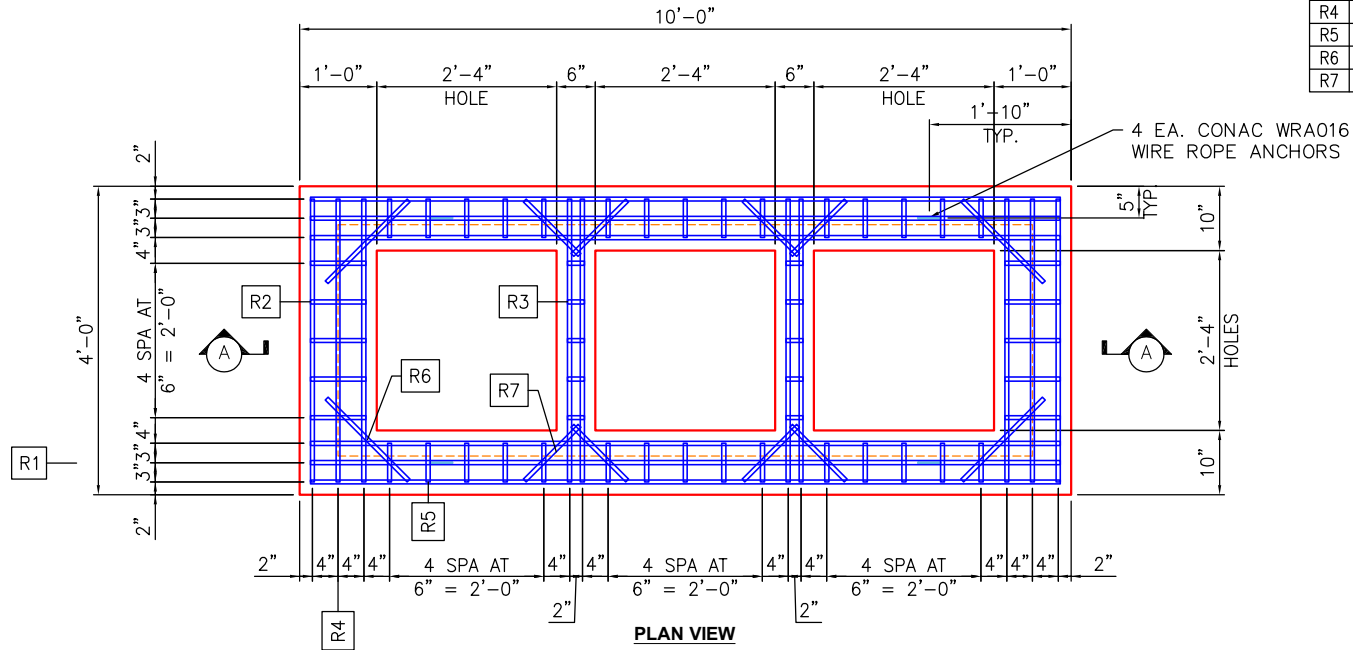


REINFORCEMENT CUT LIST				
BAR	QTY	MATERIAL	CUT LENGTH	SHAPE
R1	6	#5 BAR	9'-8"	STR
R2	10	#5 BAR	0'-9"	STR
R3	10	#5 BAR	0'-3"	STR
R4	10	#5 BAR	3'-8"	STR
R5	30	#5 BAR	0'-6"	STR
R6	4	#5 BAR	1'-6"	STR/DIAG.
R7	8	#5 BAR	1'-0"	STR/DIAG.



**NOTES:**

1. MANUFACTURED PER ASTM C913 SPECIFICATIONS.
2. CONCRETE = 4,000 PSI AT 28 DAYS.
3. REINFORCING PER ASTM A615 (GRADE 60).  
#5 BARS AT 6" C/C EACH WAY UNLESS NOTED OTHERWISE.

**PRODUCTION WORK ORDER**

PRODUCT I.D.: BX036108-08LD06S

DESCRIPTION: 36in x 108in x 8in Flat Top w/(3)28x28 holes



**QUALITY CONTROL CHECKLIST**

- ALL DIMENSIONS CORRECT.
- LIFTERS INSTALLED.
- OPENING CENTERED.
- REINFORCING CORRECT.
- SURFACE QUALITY ACCEPTABLE.
- EDGES CHAMFERED.
- ALL PATCHWORK ACCEPTABLE.

PRODUCT VIEW: RIGHT SIDE UP

CUSTOMER: BYARD CONSTRUCTION LLC

PLANT: BEAVER DAM, KY.

PROJECT: BLUE SKY SEC.1 (STORM)

WEIGHT: 2,293 LBS.

STRUCTURE: S

TOP SECTION JOINT: FLAT

ORDER NO: 25-2511B

BASE SECTION JOINT: FLAT

CHK: B. SMITH

DRAWING: J. HORSLEY

QC CHECK INITIALS:

DATE: 11/17/25

SCALE: NTS

PG. 1 of 1