

Job Name: 25-2511B - Blue Sky Sec 1 (Storm)  
 Job Location: Clarksville, TN  
 Contractor: Byard Construction, LLC

Plant: 100

11/17/2025 5:03:03 PM

Tech: J. Horsley - F

PC: A. Chambers



**Structure ID: Q**

**P2 BX036048-08LD08-24X36**

**BX FLAT LID 8inW w/24"x36" HOLE F/F**

- P3) 24" x 36" - CASTING HEIGHT - 6"
- P2) 36" x 48" - BX FLAT LID 8inW w/24"x36" HOLE F/F - 8"
- P1) 36" x 48" - BOX BASE 8inW, 8inF, Variable Ht F/n - 41"
- 1) Conseal CS-102 1.00" (Single)
- 1) CASTING - JBS 3080-V SET (F/G/H)
- 1) 36" x 48" - SGL 1"x14.5' Butyl
- 1) Hole - 38
- 2) Hole - 30

0 lb  
 1654 lb  
 6028 lb  
 0 lb  
 500 lb  
 0 lb  
 0 lb  
 0 lb  
 0 lb  
 0 lb

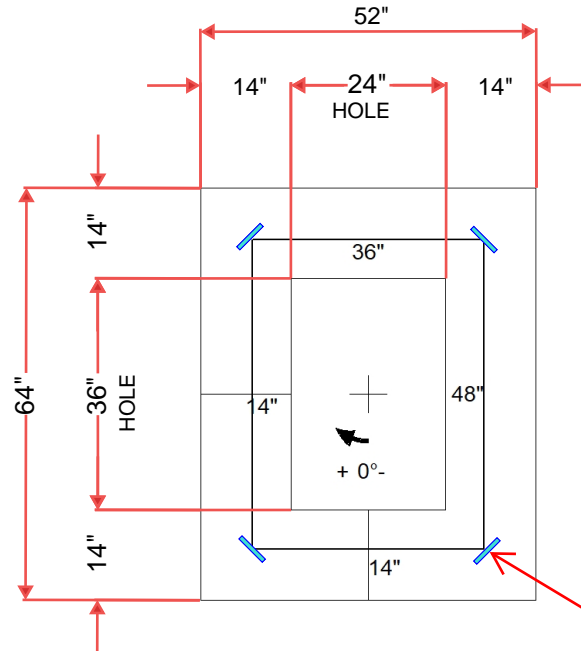
Structure Total: 8182 lb

Structure Notes:

1. PER ASTM C478 SPECIFICATIONS.
2. CONCRETE = 4,000 PSI AT 28 DAYS.
3. NO STEPS AND NO INVERT CHANNEL.
4. CASTING BY I-CAST (JBS 3080-V F/G/H).

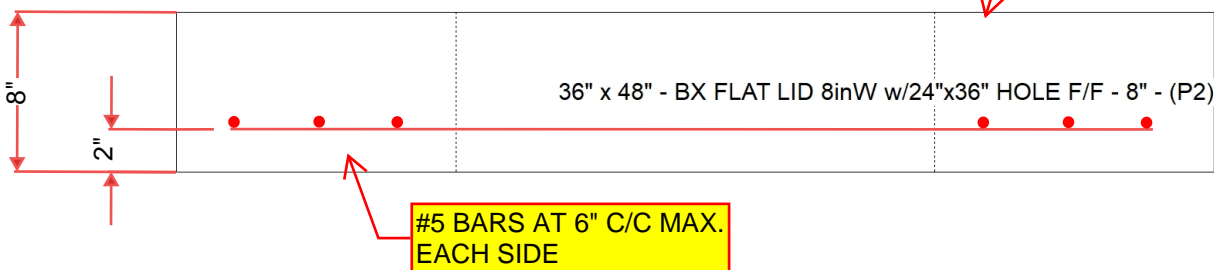
REINFORCING PER ASTM A615 (GRADE 60).

- TOP SLAB (As .62) #5 BARS AT 6" C.C.E.W..
- RISER/WALLS (As .12)
- FLOOR (As .31) #5 BARS AT 12" C.C.E.W.



4 EA. CONACA WRA016 WIRE LOOP LIFTERS

FLOATED FINISH ON TOP SURFACE



#5 BARS AT 6" C/C MAX. EACH SIDE

Coating (Int):  
 Coating (Ext):

Seam Up: Flat  
 Seam Dn: Flat

Wall Thickness: 8"

Height (Ext): 8"

Weight (Net): 1654 lb  
 Volume (Net): 0.42cu.yd