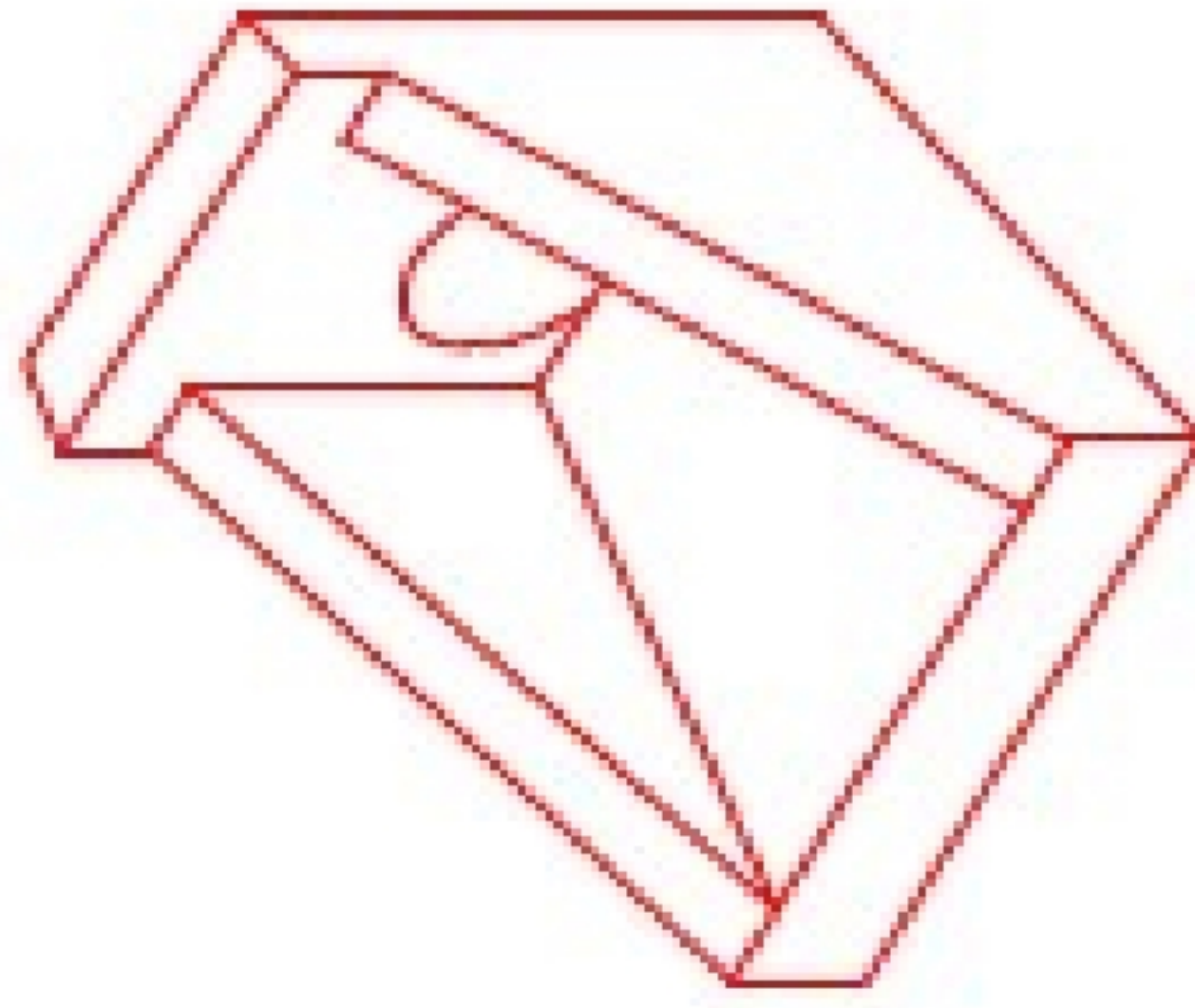


**Structure ID: L**

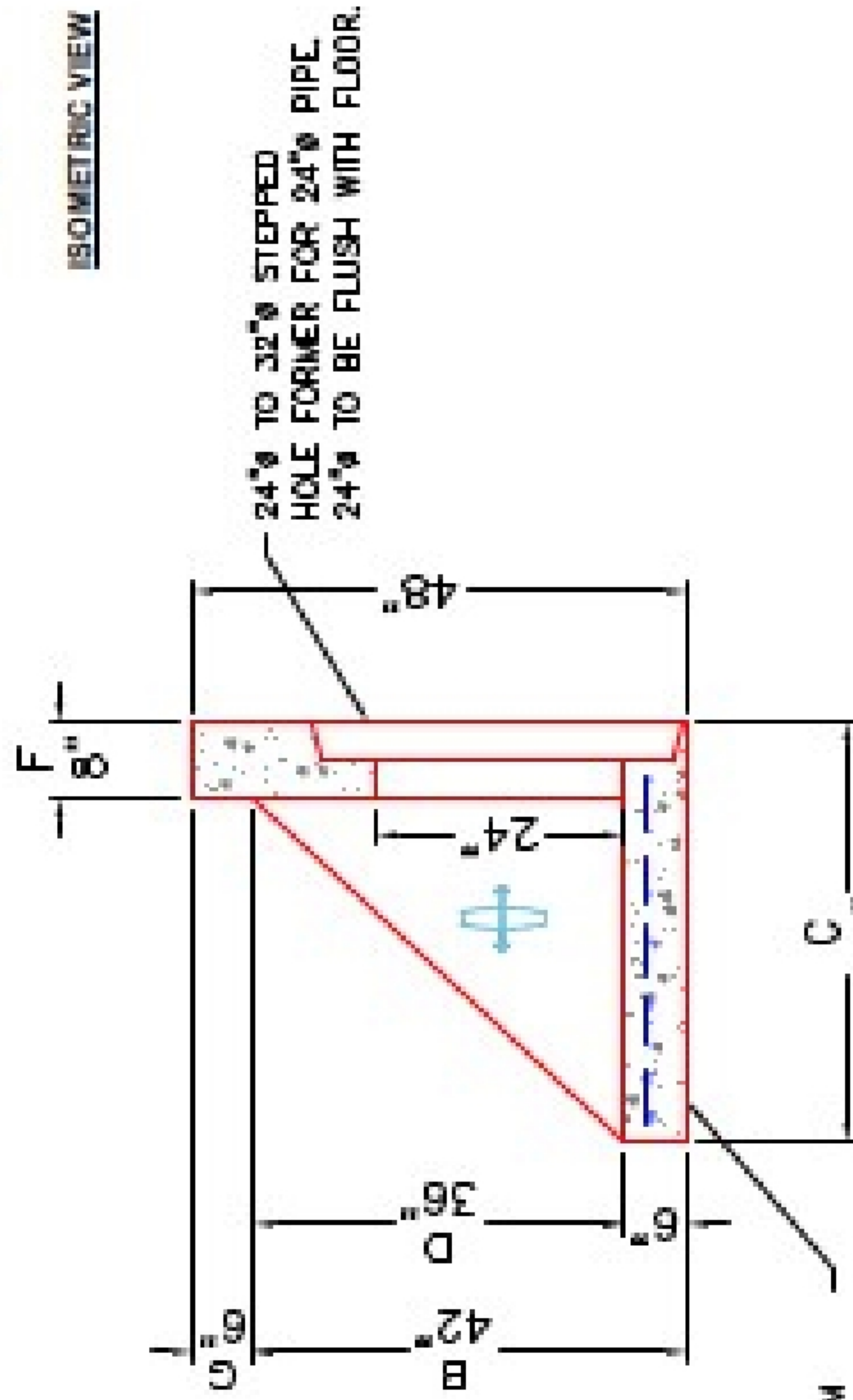
**P1 HWBW24F**

**24" - HW BW w/FLAT BOTTOM F/F**

DIMENSIONS & QUANTITIES									
TYPE	PIPE Ø	A	B	C	D	E	F	G	WEIGHT
BW	24"	4'-0"	6'-0"	3'-8"	3'-0"	3'-0"	8"	8"	3,100 LBS.

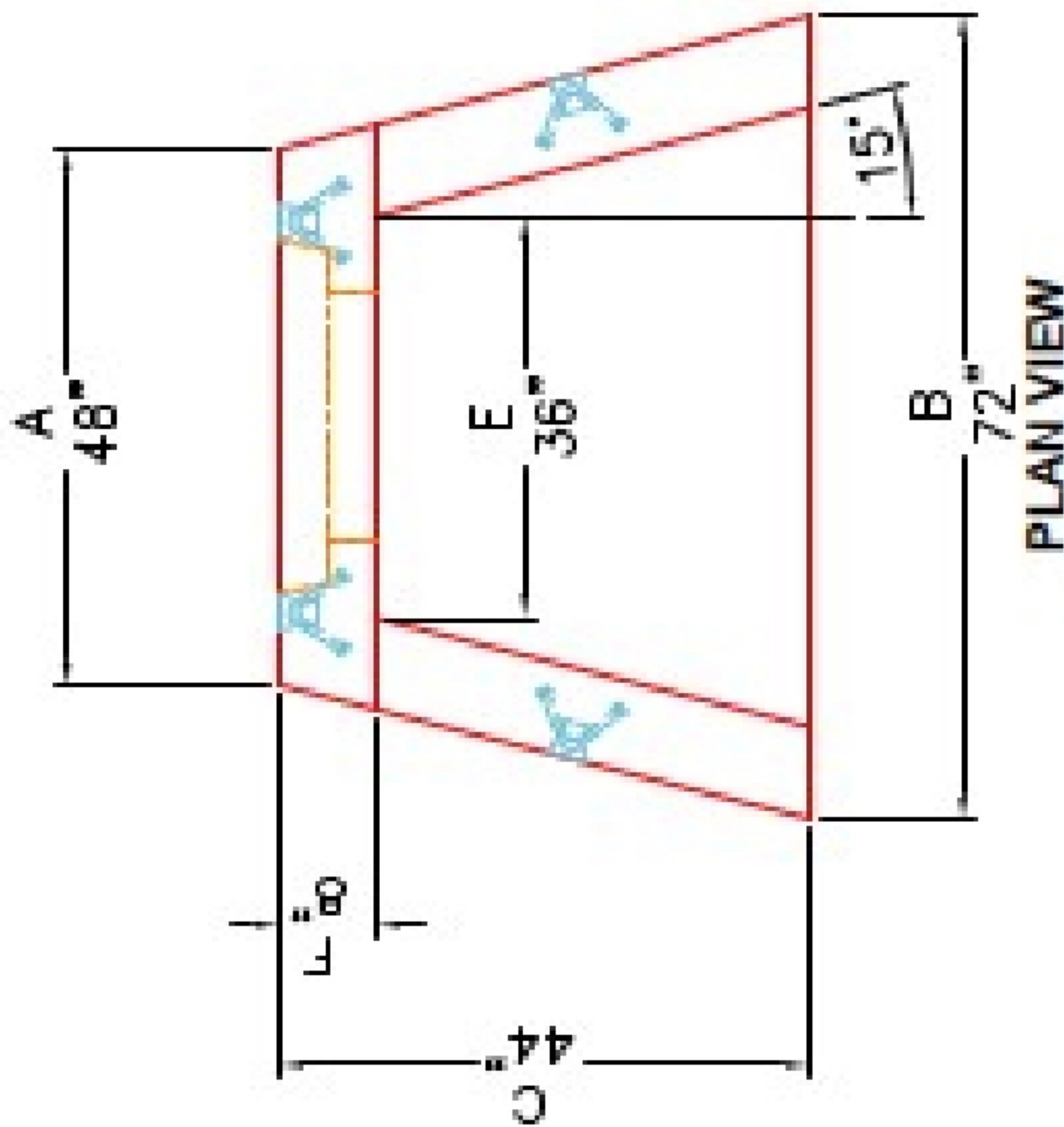


ISOMETRIC VIEW

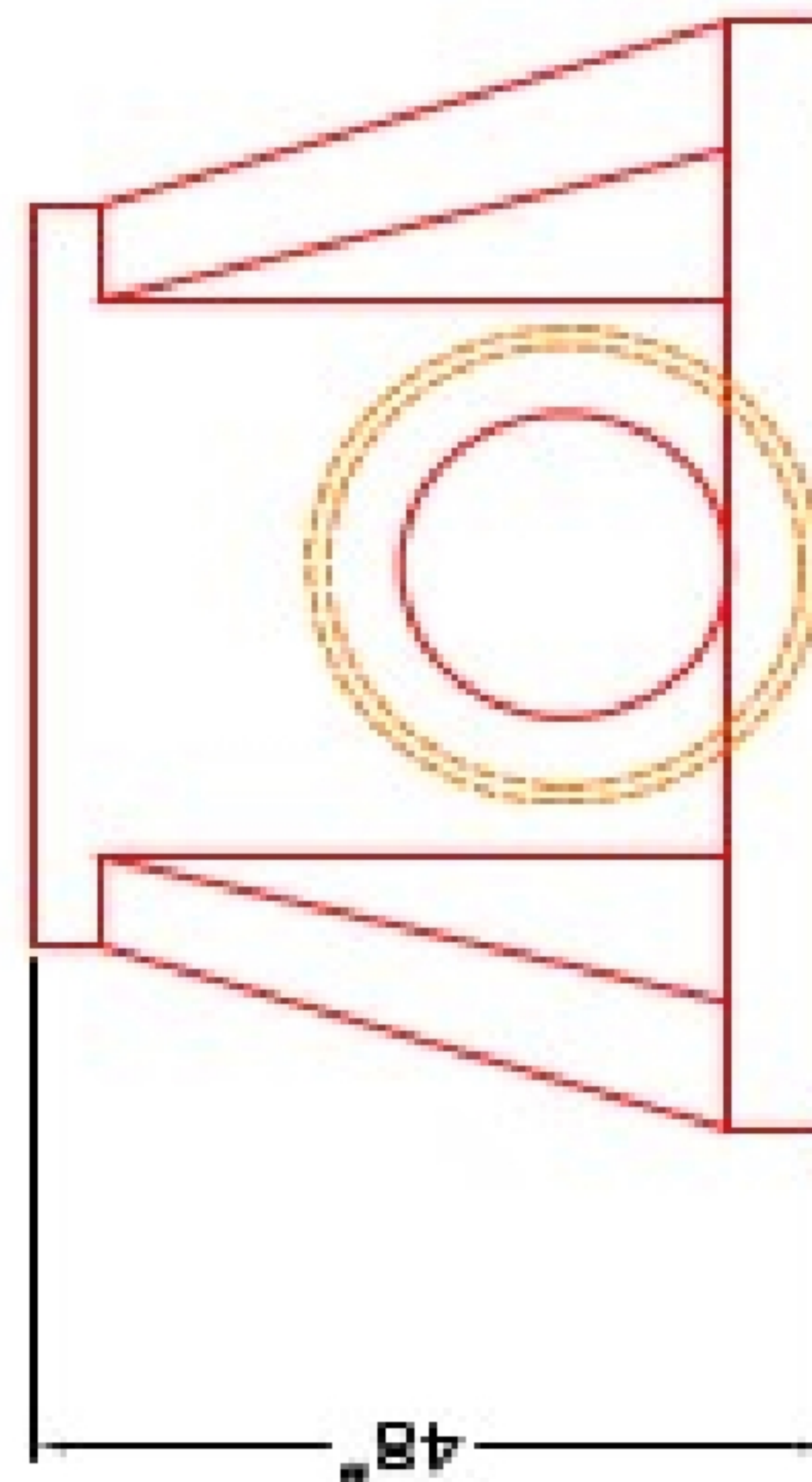


SECTION A-A

FLAT BOTTOM NOT TOE



PLAN VIEW



FRONT ELEVATION

NOTES:

1. CONCRETE: 4500 PSI AT 28 DAYS MIN. STRENGTH.
2. REINFORCING: #4 BAR @ 12" C/C E.W.-GRADE 60, (WITH 2" CONCRETE COVER MINIMUM)
3. REINFORCING BARS TO BE TACK WELDED OR TIED.

**PRODUCTION WORK ORDER**

PRODUCT I.D.: HWBW24F	DESCRIPTION: 24in BW HEADWALL FLAT BOTTOM
PRODUCT VIEW: RIGHT SIDE UP	CUSTOMER: STOCK
PLANT: BEAVER DAM, KY.	PROJECT: T.B.D.
WEIGHT: 3,475 LBS.	STRUCTURE ID.: T.B.D.
TOP SECTION JOINT: N/A	SALES ORDER NO: STOCK
BASE SECTION JOINT: N/A	CHECK: B. SMITH
QC CHECK INITIALS:	DRAWING: J. HORSLEY
	DATE: 06/04/24
	SCALE: NTS
	PG. 1 of 1

**QUALITY CONTROL CHECKLIST**

- ALL DIMENSIONS CORRECT.
- LIFTERS INSTALLED.
- STEPPED HF CORRECT SIZE.
- REINFORCING CORRECT.
- CLEARANCE ON REINFORCING CORRECT.
- EDGES CHAMFERED.
- ALL PATCHWORK ACCEPTABLE.

