

Job Name: 25-2511B - Blue Sky Sec 1 (Storm)	Plant: 100	Tech: J. Horsley - F
Job Location: Clarksville, TN	11/19/2025 3:06:35 PM	PC: A. Chambers
Contractor: Byard Construction, LLC		

**Structure ID: AD**

**P1 BX28640606-VH**

**BOX BASE 6inW, 6inF, Variable Ht F/n**

P2) 28" x 64" - CASTING HEIGHT - 6"	0 lb
P1) 28" x 64" - BOX BASE 6inW, 6inF, Variable Ht F/n - 45"	5521 lb
1) Conseal CS-102 1.00" (Single)	0 lb
2) CASTING - JBS 3080-V SET (F/G/H)	1000 lb
1) Hole - 30	0 lb
2) Hole - 24	0 lb
<b>Structure Total:</b>	<b>6521 lb</b>

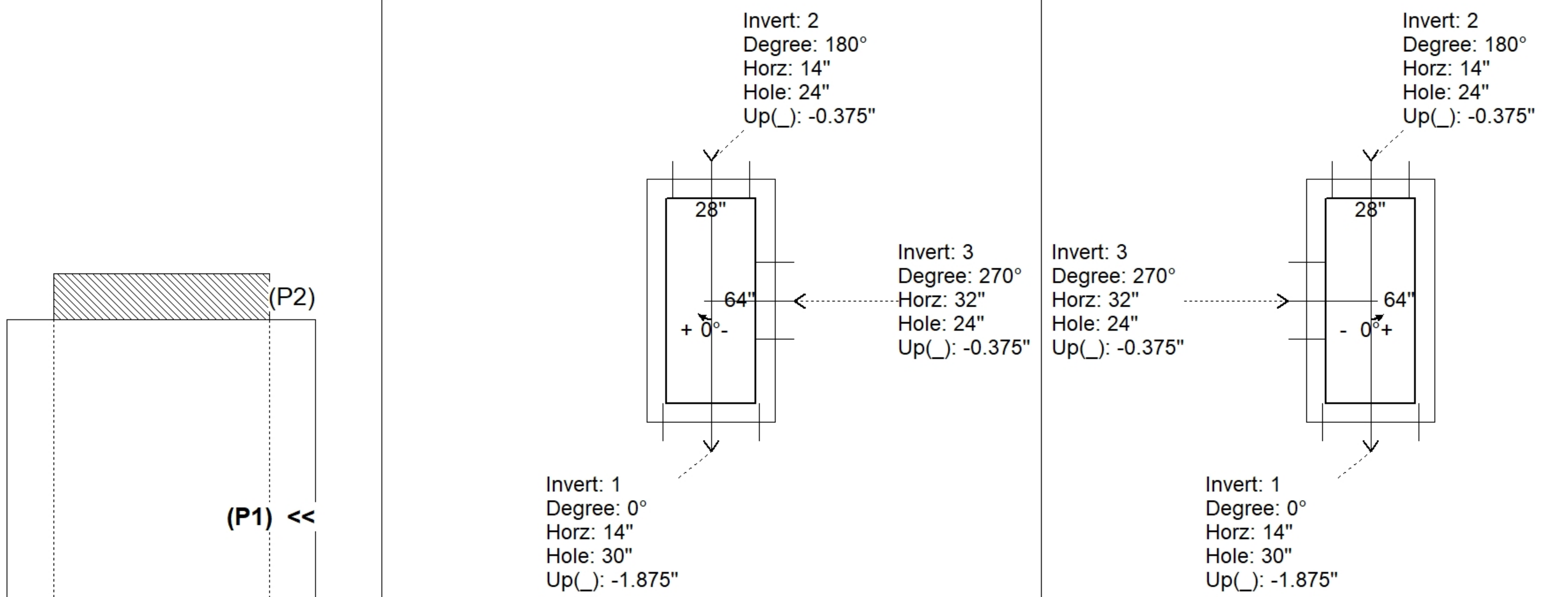
**Structure Notes:**  
 1. PER ASTM C913 SPECIFICATIONS.  
 2. CONCRETE = 4,000 PSI AT 28 DAYS.  
 3. NO STEPS AND NO INVERT CHANNEL.  
 4. CASTING BY I-CAST (2 ea. - JBS 3080-V SET F/G/H).  
  
 REINFORCING PER ASTM A615 (GRADE 60).  
 - WALLS (As .31) #5 BARS AT 12" C.C.E.W.  
 - FLOOR (As .31) #5 BARS AT 12" C.C.E.W.

Rim: 509.92' Rim to Invert: 4.26' Slack: 0.12" Sump: 0" Step Position:

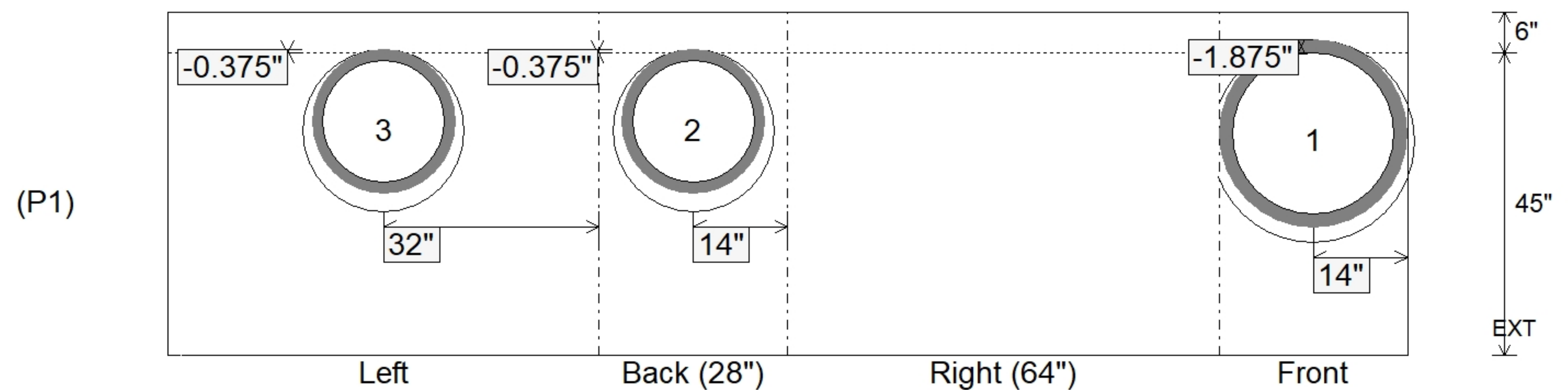
Position	Elev	Angle	Ext. (cw)	Pipe	Pipe OD	Connector	Hole	Horz Size	Up ( )	Offset
Invert 1	505.66'	0°	20"	24" HDPE	27.8"	Hole 30	30"	29"	-1.875"	0"
Invert 2	505.76'	180°	20"	18" HDPE	21.2"	Hole 24	24"	24"	-0.375"	0"
Invert 3	505.76'	270°	38"	18" HDPE	21.2"	Hole 24	24"	24"	-0.375"	0"
Invert 4										
Invert 5										
Invert 6										
Invert 7										
Invert 8										

RIGHT-SIDE UP VIEW (int. dimensions)

UPSIDE-DOWN VIEW (int. dimensions)



INSIDE WALL DIMENSIONS



Coating (Int):	Seam Up: Flat	Wall Thickness: 6"	Height (Int): 45"	Weight (Net): 5521 lb
Coating (Ext):	Seam Dn: n/a	Floor Height: 6"	Height (Ext): 51"	Volume (Net): 1.41cu.yd