

Job Name: 25-2468 Kerrick Elementary  
 Job Location: Louisville, KY  
 Contractor: KY Earthworks

Plant: Beaver Dam

Tech: J. Horsley

12/16/2025 10:36:17 AM

PC: J. Jarvis



**Structure ID: ST 4-CB**

**P2 MH048LD07-2436 LOU-MSD**

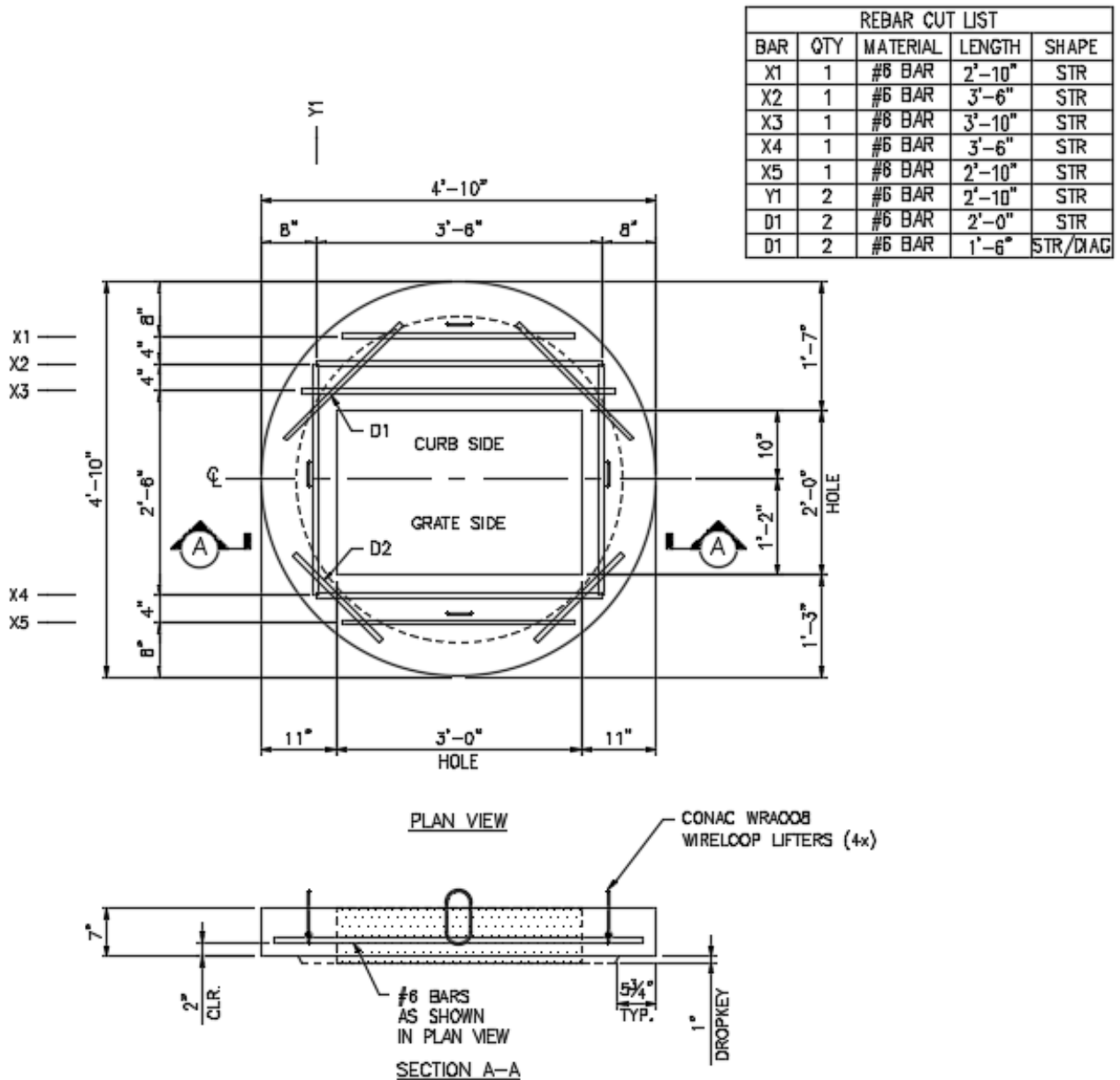
**MH FLAT TOP w/24"x36" Hole LOU-MSD F/F**

- P3) 24" x 36" - CASTING HEIGHT - 6"
- P2) 48" - MH FLAT TOP w/24"x36" Hole LOU-MSD F/F - 7"
- P1) 48" - MH BASE Custom Ht F/n - 31"
- 1) 48" - SGL 1"x14.5' Butyl (2x)
- 2) Hole - 20

0 lb  
 1044 lb  
 3225 lb  
 0 lb  
 0 lb  
 0 lb  
 Structure Total: 4270 lb

**Structure Notes:**

1. PER LOUISVILLE MSD/ ASTM C478 SPECIFICATIONS.
  2. CONCRETE = 4,000 PSI AT 28 DAYS.
  3. CASTING BY OTHERS (HOE MC-470 F/C).
- REINFORCING PER ASTM A615 (GRADE 60).  
 - TOP SLAB - #6 BARS AT 4" C.C.E.W..  
 - RISER/WALLS (As .12)  
 - FLOOR (As .31) #5 BARS AT 12" C.C.E.W.



Coating (Int):  
 Coating (Ext):

Seam Up: Flat  
 Seam Dn: Flat

Wall Thickness: 5"

Height (Ext): 7"

Weight (Net): 1044 lb  
 Volume (Net): 0.27cu.yd