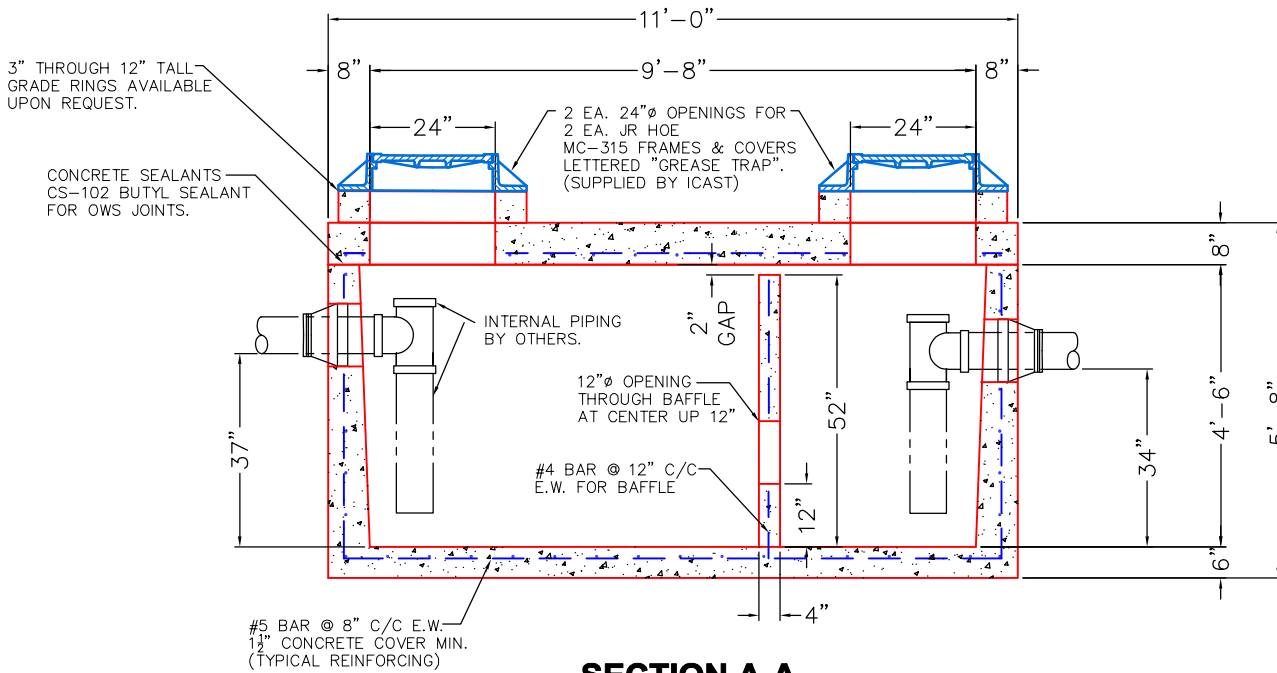


PLAN VIEW



SECTION A-A

STRUCTURE NOTES:

1. MANUFACTURED PER ASTM C-890-13 LATEST REVISION. (TRAFFIC RATED H-20 LOADING DESIGN).
2. CONCRETE = 5,000 PSI AT 28 DAYS.
3. REINFORCING PER ASTM A615 (GRADE 60).
4. SEALED PER ASTM C-990-09.
5. GRADE RINGS BY REQUEST.

WEIGHTS:

8" THICK TOP SLAB = 5,775 LBS.
60" TALL BASE W/BAFFLE = 17,735 LBS.

REVISIONS	
REV. Δ DATE:	NO REVISIONS TO DATE



SUBMITTAL DRAWING: 10X5GT-1000-TYPICAL		
CUSTOMER: KY EARTHWORKS		
PROJECT: KERRICK ELEMENTARY		
STRUCTURE: 1000 GAL. GREASE TRAP		
QUOTE/SALES ORDER NO: 25-2468		
PC: J.H. ROSS, PE	DRAWN BY: J. HORSLEY	
DATE: 08/28/25	SCALE: NTS	PG. 1 of 1