

Job Name: 25-2468 Kerrick Elementary  
 Job Location: Louisville, KY  
 Contractor: KY Earthworks

Plant: Beaver Dam

Tech: J. Horsley

11/14/2025 2:18:04 PM

PC: J. Jarvis



**Structure ID: DS1**

**P2 MH060LD13**

**MH FLAT TOP w/ 24" ECC Hole F/G**

- P3) 24" - CASTING HEIGHT - 7"
- P2) 60" - MH FLAT TOP w/ 24" ECC Hole F/G - 13"
- P1) 60" - MH BASE Custom Ht T/n - 34"
- 1) 48" x 12" - WEIR WALL 6" THK - SECONDARY POUR
- 1) 60" - SGL 1"x14.5' Butyl (2x)
- 2) Hole - 24
- 2) Hole - 16

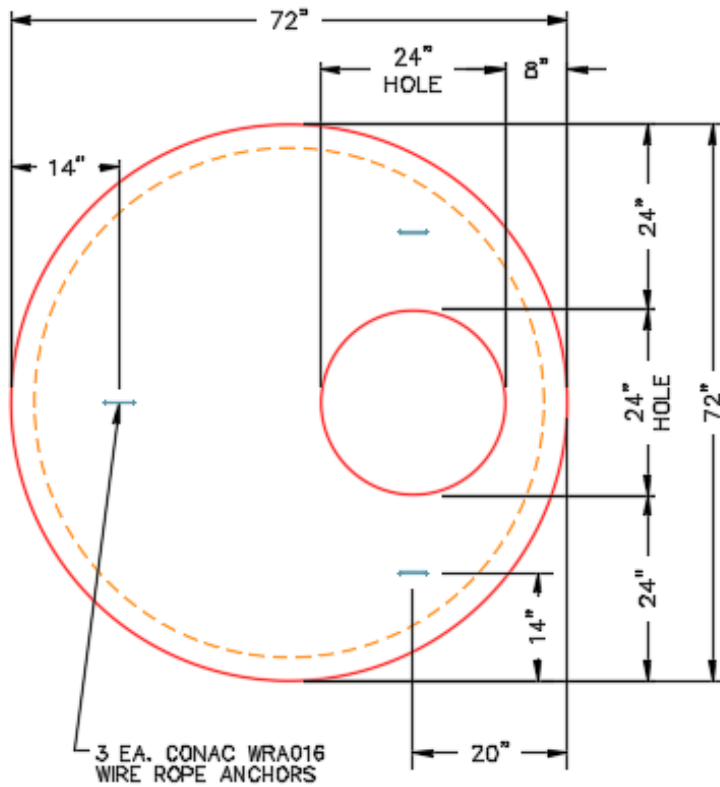
	0 lb
	2869 lb
	5586 lb
	290 lb
	0 lb
	0 lb
	0 lb
Structure Total:	8745 lb

**Structure Notes:**

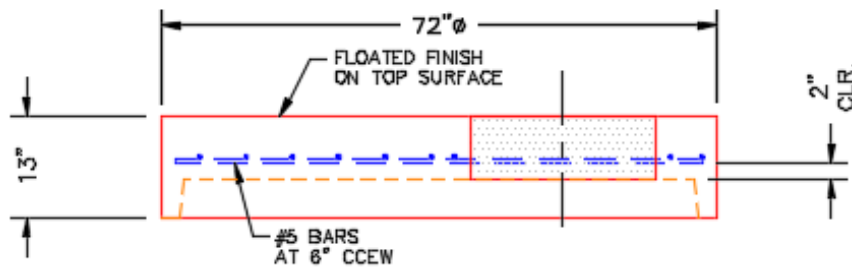
1. PER LOUISVILLE MSD/ ASTM C478 SPECIFICATIONS.
2. CONCRETE = 4,000 PSI AT 28 DAYS.
3. CASTING BY OTHERS (HOE MC-420 F/C).
4. WEIR WALL (6" WD x 11.5" TALL) TOP EL. 444.80'

REINFORCING PER ASTM A615 (GRADE 60).

- TOP SLAB (As .62) #5 BARS AT 6" C.C.E.W..
- RISER/WALLS (As 8
- FLOOR (As .31) #5 BARS AT 12" C.C.E.W.



**PLAN VIEW**



**SECTION AA**

Coating (Int):  
 Coating (Ext):

Seam Up: Flat  
 Seam Dn: Groove

Wall Thickness: 6"

Height (Ext): 13"

Weight (Net): 2869 lb  
 Volume (Net): 0.73cu.yd