

Job Name: 25-2442 Nashville Pike Flow Meter
 Job Location: Gallatin, TN
 Contractor: Hayes Pipe Supply

Plant: Beaver Dam

Tech: J. Coppage

3/20/2026 2:28:17 PM

PC: E. Bradley



Structure ID: VAULT

P1 BX6072-08W08F-BAVF

BOX BASE 8inW, 8inF, Variable Ht

- P3) 60" x 72" - HATCH (CAST FLUSH) - 3"
- P2) 60" x 72" - CUSTOM TOP SLAB w/72"x60" HATCH - 8"
- P1) 60" x 72" - BOX BASE 8inW, 8inF, Variable Ht - 64"
- 1) SECONDARY POUR - WALLS
- 1) Hole - 8
- 2) Hole - 16

100 lb
 2850 lb
 16903 lb
 0 lb
 0 lb
 0 lb

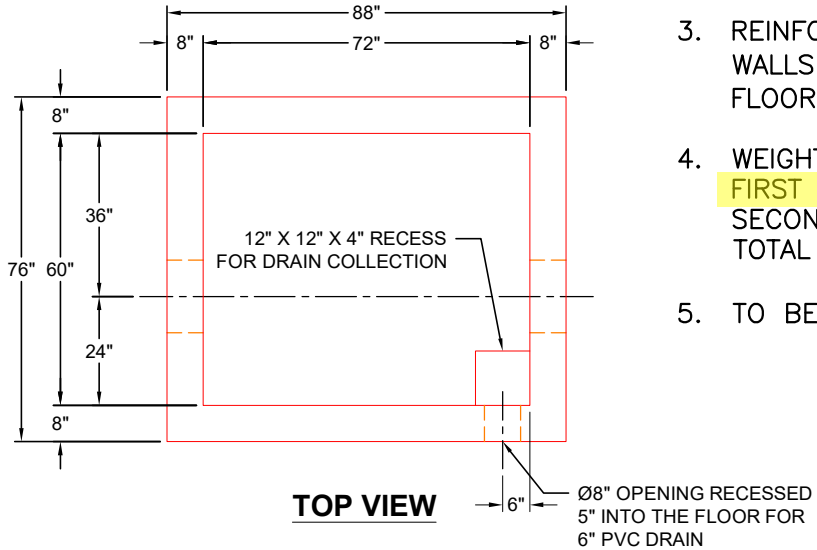
Structure Notes:

1. PER ASTM C913 SPECIFICATIONS.
2. CONCRETE = 4,000 PSI AT 28 DAYS.
3. NO INVERT CHANNEL.
4. (HATCH PROVIDED BY OTHERS)

Structure Total: 19853 lb

- REINFORCING PER ASTM A615 (GRADE 60).
- TOP SLAB #4 BARS AT 6" C.C.E.W.
 - WALLS #4 BARS AT 8" C.C.E.W.
 - FLOOR #4 BARS AT 8" C.C.E.W.

Rim: 6" Rim to Invert: 6" Slack: 0" Sump: 0" Step Position:

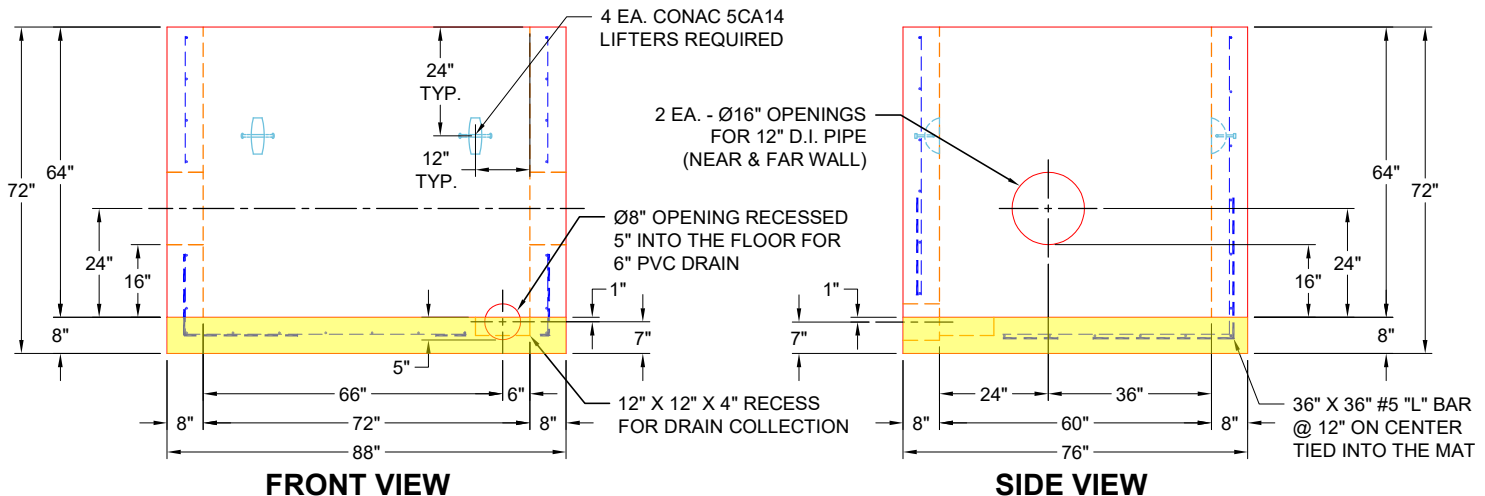


TOP VIEW

GENERAL NOTES:

1. MANUFACTURED TO ASTM C-913 (LATEST REVISION).
2. CONCRETE: 4,000 PSI AT 28 DAYS.
3. REINFORCING:
 WALLS: #4 BAR @ 8" E.W. O.C. (GRADE 60)
 FLOOR: #4 BAR @ 8" E.W. O.C. (GRADE 60)
4. WEIGHT:
 FIRST POUR = 4,490 LBS.
 SECOND POUR = 12,413 LBS.
 TOTAL = 16,903 LBS.
5. TO BE SEALED WITH 1" CS-102 JOINT SEALANT.

FIRST POUR DRAWING



FRONT VIEW

SIDE VIEW

| | | | | |
|----------------------------------|-------------------------------|--|--|---|
| Coating (Int): Coating (Ext): | Seam Up: Flat Seam Dn: n/a | Wall Thickness: 8" Floor Height: 8" | Height (Int): 64" Height (Ext): 72" | Weight (Net): 16903 lb Volume (Net): 4.32cu.yd |
|----------------------------------|-------------------------------|--|--|---|

Job Name: 25-2442 Nashville Pike Flow Meter
 Job Location: Gallatin, TN
 Contractor: Hayes Pipe Supply

Plant: Beaver Dam
 3/20/2026 2:28:17 PM

Tech: J. Coppage
 PC: E. Bradley



Structure ID: VAULT

P1 BX6072-08W08F-BAVF BOX BASE 8inW, 8inF, Variable Ht

P3) 60" x 72" - HATCH (CAST FLUSH) - 3"
 P2) 60" x 72" - CUSTOM TOP SLAB w/72"x60" HATCH - 8"
 P1) 60" x 72" - BOX BASE 8inW, 8inF, Variable Ht - 64"
 1) SECONDARY POUR - WALLS
 1) Hole - 8
 2) Hole - 16

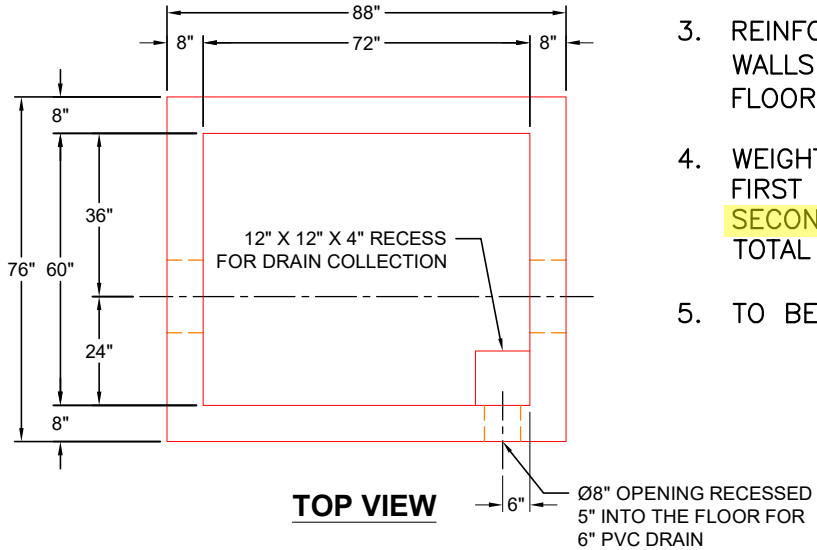
100 lb
 2850 lb
 16903 lb
 0 lb
 0 lb
 0 lb

 Structure Total: 19853 lb

Structure Notes:
 1. PER ASTM C913 SPECIFICATIONS.
 2. CONCRETE = 4,000 PSI AT 28 DAYS.
 3. NO INVERT CHANNEL.
 4. (HATCH PROVIDED BY OTHERS)

REINFORCING PER ASTM A615 (GRADE 60).
 - TOP SLAB #4 BARS AT 6" C.C.E.W.
 - WALLS #4 BARS AT 8" C.C.E.W.
 - FLOOR #4 BARS AT 8" C.C.E.W.

Rim: 6" Rim to Invert: 6" Slack: 0" Sump: 0" Step Position:

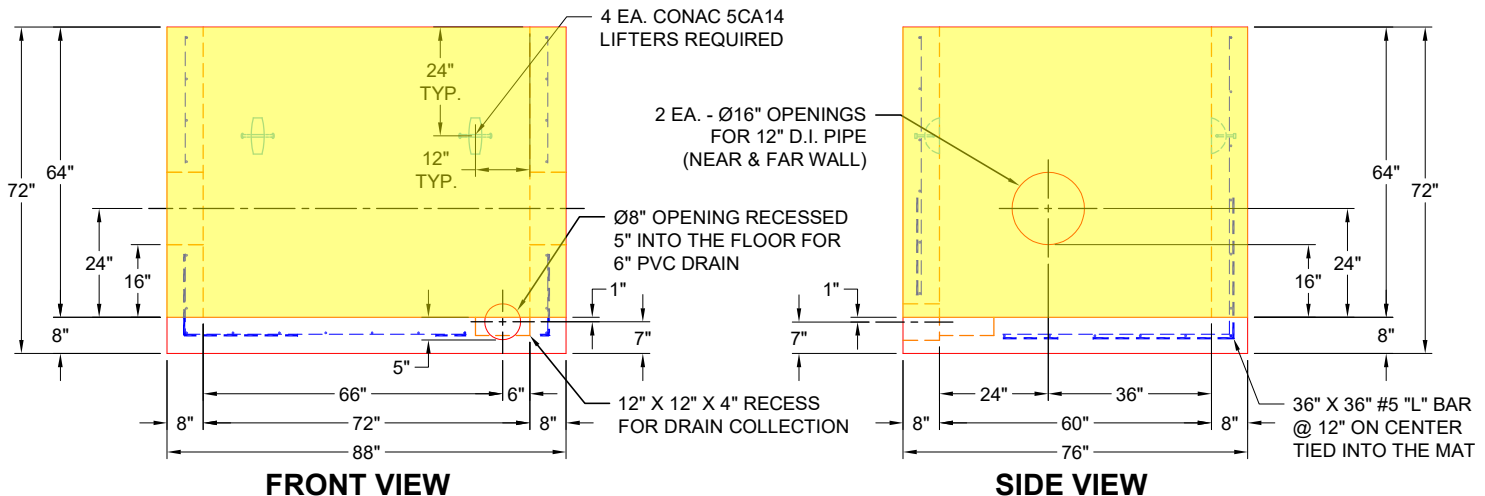


TOP VIEW

GENERAL NOTES:

1. MANUFACTURED TO ASTM C-913 (LATEST REVISION).
2. CONCRETE: 4,000 PSI AT 28 DAYS.
3. REINFORCING:
 WALLS: #4 BAR @ 8" E.W. O.C. (GRADE 60)
 FLOOR: #4 BAR @ 8" E.W. O.C. (GRADE 60)
4. WEIGHT:
 FIRST POUR = 4,490 LBS.
SECOND POUR = 12,413 LBS.
 TOTAL = 16,903 LBS.
5. TO BE SEALED WITH 1" CS-102 JOINT SEALANT.

SECOND POUR DRAWING



FRONT VIEW

SIDE VIEW

| | | | | |
|----------------------------------|-------------------------------|--|--|---|
| Coating (Int): Coating (Ext): | Seam Up: Flat Seam Dn: n/a | Wall Thickness: 8" Floor Height: 8" | Height (Int): 64" Height (Ext): 72" | Weight (Net): 16903 lb Volume (Net): 4.32cu.yd |
|----------------------------------|-------------------------------|--|--|---|