

Job Name: 25-2418 Marvin's Lift Station  
 Job Location: Radcliff, KY 40160  
 Contractor: Ferguson Waterworks #1491

Plant: Beaver Dam, KY  
 12/30/2025 10:47:00 AM

Tech: C. Russ  
 PC: C. Goff



**Structure ID: WET WELL TOP SLAB**

**P1 MH096LD17SPCDARED**

**MH FLAT TOP w/36"x54" Hatch w/ConBlock-CDA Red**

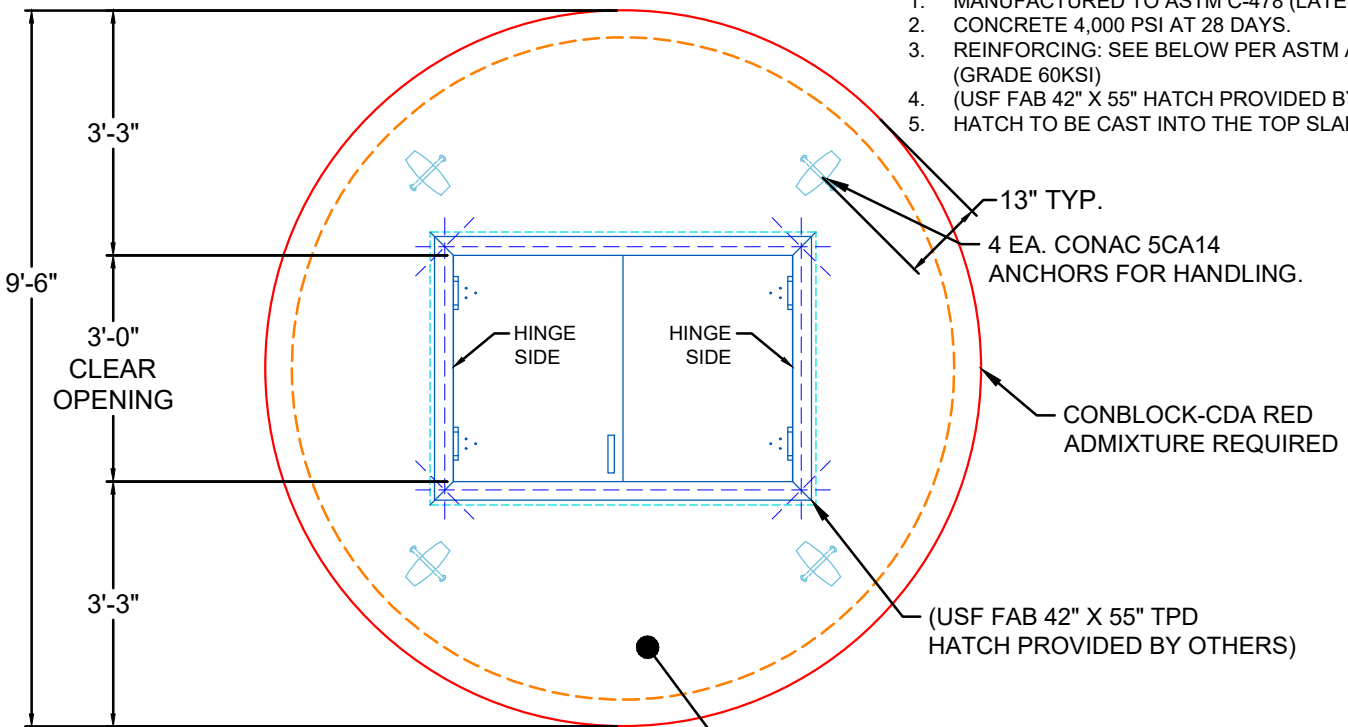
- P2) 36" x 54" - HATCH (CAST FLUSH) - 3"
- P1) 96" - MH FLAT TOP w/36"x54" Hatch w/ConBlock-CDA Red - 17"
- 1) JOINT WRAP - 12" WD x 096" MAC WRAP
- 1) This Structure Includes a Cast-in Item
- 63.62 SqFt) Carboline Bitumastic 300M [INT]

100 lb  
 8969 lb  
 0 lb  
 0 lb  
 0 lb  
 -----  
 Structure Total: 9069 lb

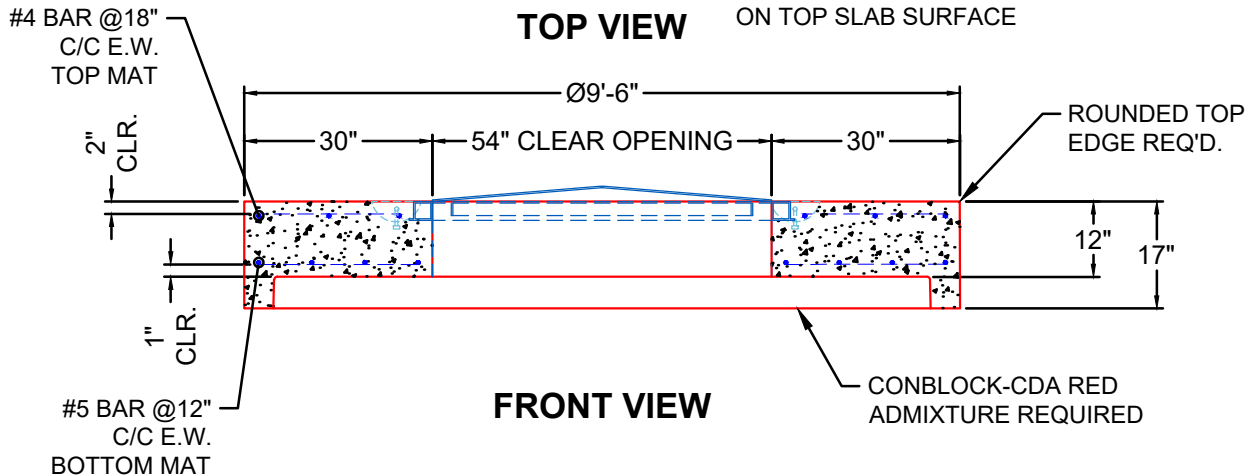
- Structure Notes:**
1. PER ASTM C478 SPECIFICATIONS.
  2. CONCRETE = 4,000 PSI AT 28 DAYS.
  3. REINFORCING PER ASTM A615 (GRADE 60).
    - TOP SLAB DOUBLE MAT
    - TOP MAT #4 BARS AT 18" C.C.E.W
    - BTM MAT #5 BARS AT 12" C.C.E.W
  5. INTERIOR OF THE STRUCTURE TO BE COATED WITH CARBOLINE 300M.
  6. JOINTS SEALED WITH 1" CS 231 & MAC WRAP.
  7. INSIDE DROP ASSEMBLY #5 INV PROVIDED BY OTHERS.

**GENERAL NOTES:**

1. MANUFACTURED TO ASTM C-478 (LATEST REVISION).
2. CONCRETE 4,000 PSI AT 28 DAYS.
3. REINFORCING: SEE BELOW PER ASTM A615. (GRADE 60KSI)
4. (USF FAB 42" X 55" HATCH PROVIDED BY OTHERS)
5. HATCH TO BE CAST INTO THE TOP SLAB.



**TOP VIEW**



**FRONT VIEW**

Coating (Int): Carboline Bitumastic 300M  
 Coating (Ext):

Seam Up: Flat  
 Seam Dn: Groove

Wall Thickness: 9"

Height (Ext): 17"

Weight (Net): 8969 lb  
 Volume (Net): 2.29cu.yd