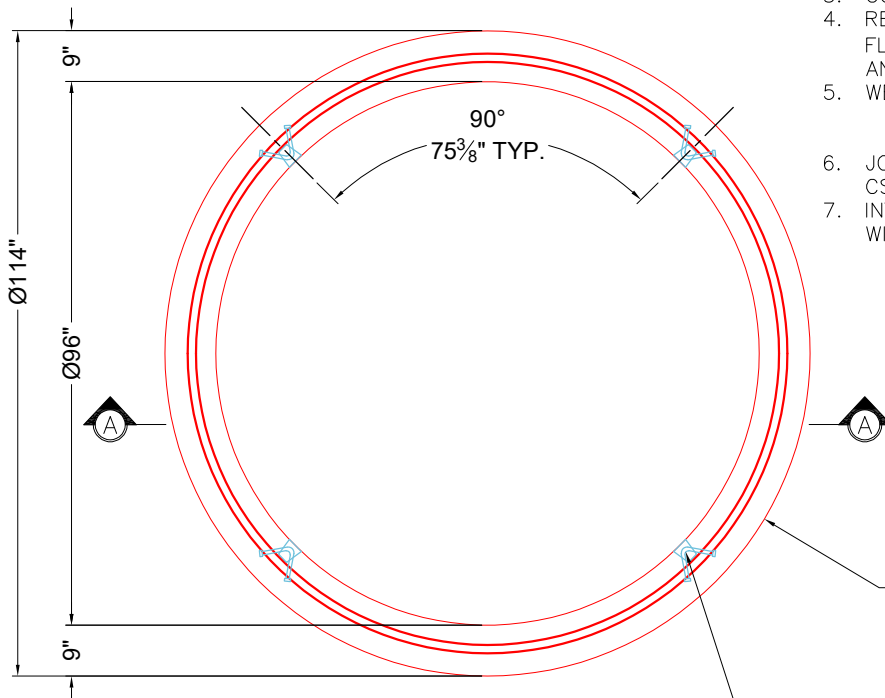


GENERAL NOTES:

1. MANUFACTURED TO ASTM C-478 (LATEST REVISION).
2. CONCRETE 5,000 PSI AT 28 DAYS.
3. CONBLOCK-CDA RED ADMIXTURE REQUIRED.
4. REINFORCING: WALLS - WWF AREA 0.24
FLOOR - AREA 0.27 - #5 BAR @ 12" C/C TOP AND BOTTOM MAT.
5. WEIGHT: TOTAL - 28,962 LBS.
FIRST POUR - 9,216 LBS
SECOND POUR - 19,746 LBS
6. JOINT SEAL: JOINTS TO BE SEALED WITH CS-231 AND MAC-WRAP.
7. INTERIOR OF STRUCTURE TO BE COATED WITH CARBOLINE 300.

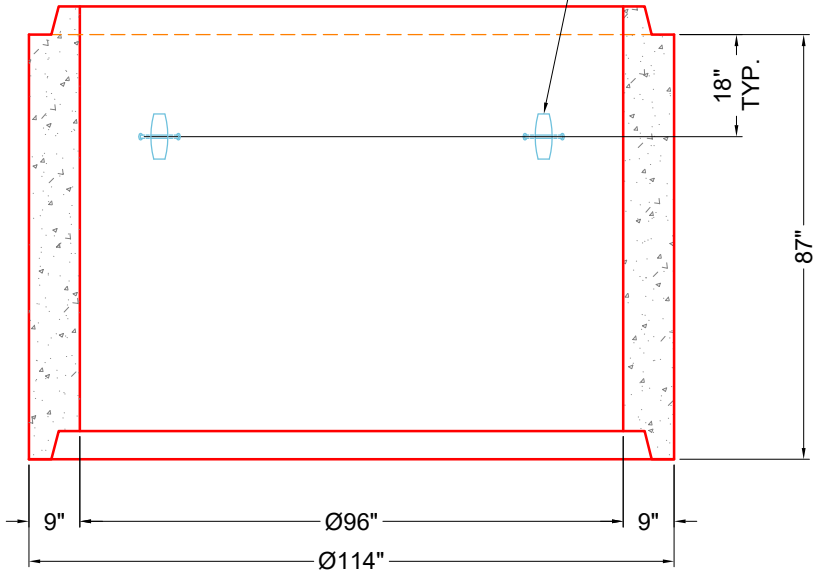
FIRST POUR DRAWING



TOP VIEW

CONBLOCK-CDA RED ADMIXTURE REQUIRED

4 EA. CONAC 6CA14 ANCHORS REQUIRED FOR HANDLING.



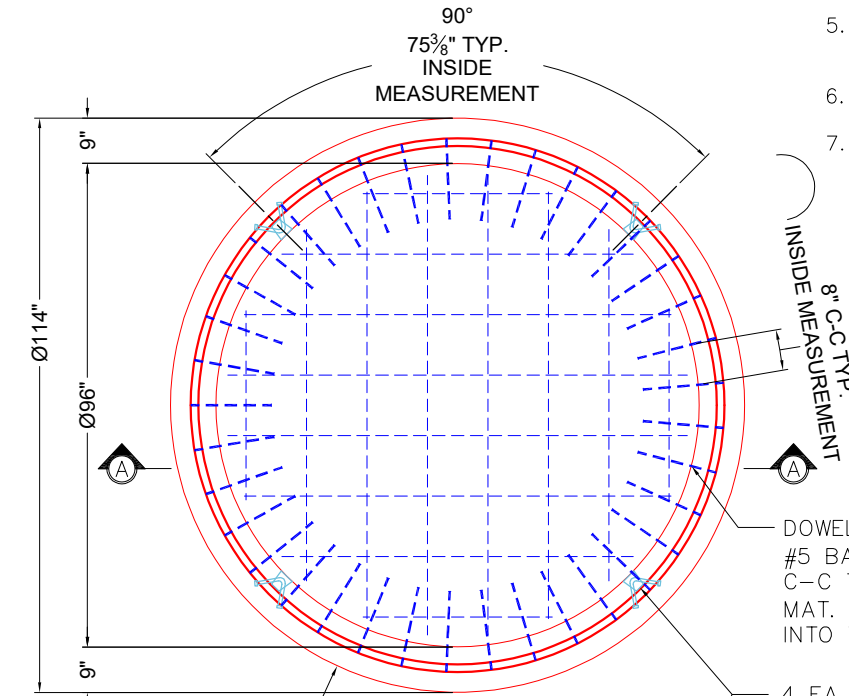
SECTION A-A

<p>PRODUCTION WORK ORDER</p>		<p>PRODUCT I.D.: MH096BAVFCDARED</p>	<p>DESCRIPTION: 96"Ø MONOBASE, 87" EXTERNAL HEIGHT W/ 12" THICK FLOOR</p>		
	<p>QUALITY CONTROL CHECKLIST</p>	<p>PRODUCT VIEW: RIGHT SIDE UP</p>	<p>CUSTOMER: FERGUSON WATERWORKS #1491</p>		
	<input type="checkbox"/> ALL DIMENSIONS CORRECT.	<p>PLANT: BEAVER DAM, KY.</p>	<p>PROJECT: MARVINS LIFT STATION</p>		
	<input type="checkbox"/> LIFTERS INSTALLED.	<p>WEIGHT: 28,962 LBS</p>	<p>STRUCTURE: WET WELL</p>		
	<input type="checkbox"/> CONBLOCK-CDA RED ADMIX.	<p>TOP SECTION JOINT: N/A</p>	<p>QUOTE/SALES ORDER NO: 25-2418</p>		
	<input type="checkbox"/> REINFORCING CORRECT.	<p>BASE SECTION JOINT: N/A</p>	<p>PC: C. GOFF</p>	<p>DRAWING: J. COPPAGE</p>	
	<input type="checkbox"/> FINISH ON SURFACE UNIFORM.	<p>QC CHECK INITIALS:</p>	<p>DATE: 11/6/25</p>	<p>SCALE: NTS</p>	<p>PG. 1 of 1</p>

- ALL DIMENSIONS CORRECT.
- LIFTERS INSTALLED.
- CONBLOCK-CDA RED ADMIX.
- REINFORCING CORRECT.
- FINISH ON SURFACE UNIFORM.
- OUTSIDE TOP EDGE TROWELLED.
- GROOVE JOINT INSTALLED.

GENERAL NOTES:

1. MANUFACTURED TO ASTM C-478 (LATEST REVISION).
2. CONCRETE 5,000 PSI AT 28 DAYS.
3. CONBLOCK-CDA RED ADMIXTURE REQUIRED.
4. REINFORCING: WALLS - WWF AREA 0.24
FLOOR - AREA 0.27 - #5 BAR @ 12" C/C TOP AND BOTTOM MAT.
5. WEIGHT: TOTAL - 28,962 LBS.
FIRST POUR - 9,216 LBS
SECOND POUR - 19,746 LBS
6. JOINT SEAL: JOINTS TO BE SEALED WITH CS-231 AND MAC-WRAP.
7. INTERIOR OF STRUCTURE TO BE COATED WITH CARBOLINE 300.



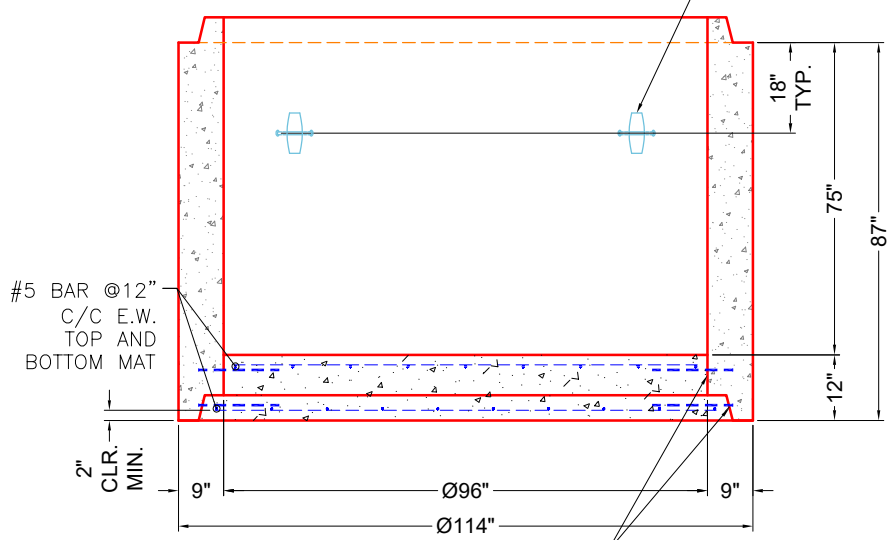
CONBLOCK-CDA RED ADMIXTURE REQUIRED

TOP VIEW

DOWEL IN (74) 16" LONG #5 BAR (GRADE 60) 8" C-C TOP AND BOTTOM MAT. 4" MIN. PENETRATION INTO THE WALLS REQUIRED.

4 EA. CONAC 6CA14 ANCHORS REQUIRED FOR HANDLING.

SECOND POUR DRAWING



SECTION A-A

TWO LAYERS OF CS-231 REQUIRED PRIOR TO POURING THE FLOOR

<p>PRODUCTION WORK ORDER</p>		<p>PRODUCT I.D.: MH096BAVFCDARED</p>	<p>DESCRIPTION: 96"Ø MONOBASE, 87" EXTERNAL HEIGHT W/ 12" THICK FLOOR</p>	
	<p>QUALITY CONTROL CHECKLIST</p>	<p>PRODUCT VIEW: RIGHT SIDE UP</p>	<p>CUSTOMER: FERGUSON WATERWORKS #1491</p>	
	<input type="checkbox"/> ALL DIMENSIONS CORRECT.	<p>PLANT: BEAVER DAM, KY.</p>	<p>PROJECT: MARVINS LIFT STATION</p>	
	<input type="checkbox"/> LIFTERS INSTALLED.	<p>WEIGHT: 28,962 LBS</p>	<p>STRUCTURE: WET WELL</p>	
	<input type="checkbox"/> CONBLOCK-CDA RED ADMIX.	<p>TOP SECTION JOINT: N/A</p>	<p>QUOTE/SALES ORDER NO: 25-2418</p>	
	<input type="checkbox"/> REINFORCING CORRECT.	<p>BASE SECTION JOINT: N/A</p>	<p>PC: C. GOFF</p>	<p>DRAWING: J. COPPAGE</p>
	<input type="checkbox"/> FINISH ON SURFACE UNIFORM.	<p>QC CHECK INITIALS:</p>	<p>DATE: 11/6/25</p>	<p>SCALE: NTS</p>
<input type="checkbox"/> OUTSIDE TOP EDGE TROWELLED.			<p>PG. 1 of 1</p>	
<input type="checkbox"/> GROOVE JOINT INSTALLED.				