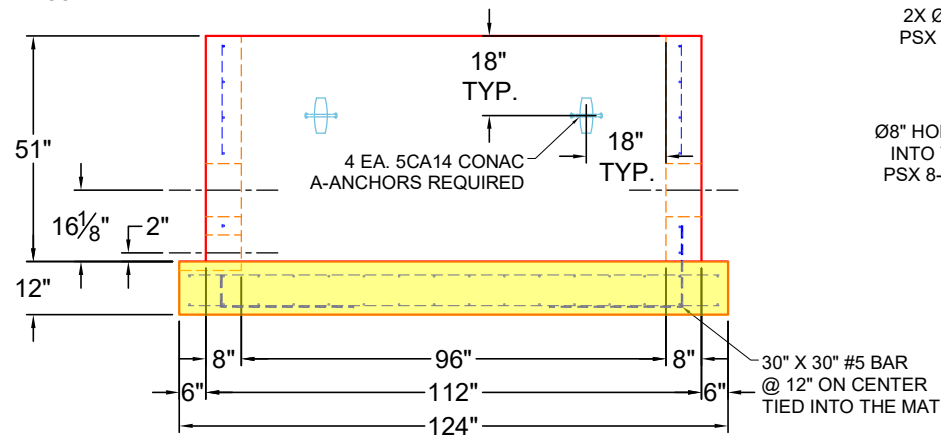


TOP VIEW

6 7/8" WIDE 2" DEEP RECESS IN THE EXTENDED BASE FLANGE FOR 4" DUCTILE

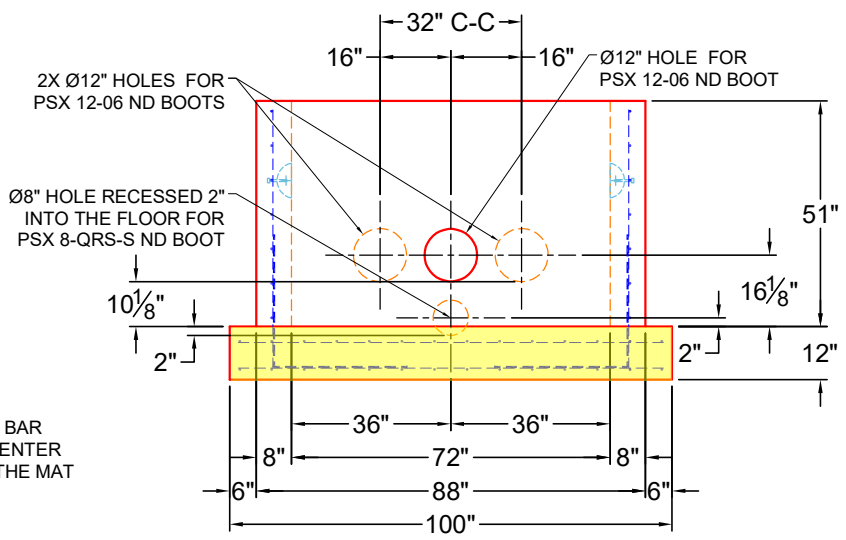


FRONT VIEW


GENERAL NOTES:

1. MANUFACTURED TO ASTM C-913 (LATEST REVISION).
2. CONCRETE: 5,000 PSI AT 28 DAYS.
3. REINFORCING:
WALLS - #5 BAR @ 8" C-C E.W.
FLOOR - #5 BAR @ 8" C-C E.W. DBL MAT
PER ASTM A615 (GRADE 60).
4. WEIGHTS:
FIRST POUR - 12,489 LBS.
SECOND POUR - 12,410 LBS.
TOTAL - 24,899 LBS
5. VAULT JOINT TO BE SEALED WITH CS-102 ROLL BUTYL MASTIC SUPPLIED BY ICAST
6. STRUCTURE TO GET 2 INTERNAL COATINGS OF CARBOLINE 300M.
7. ICAST TO PROVIDE 1X PSX 8QRS-S ND BOOT AND 3X PSX 12-06 ND BOOTS.

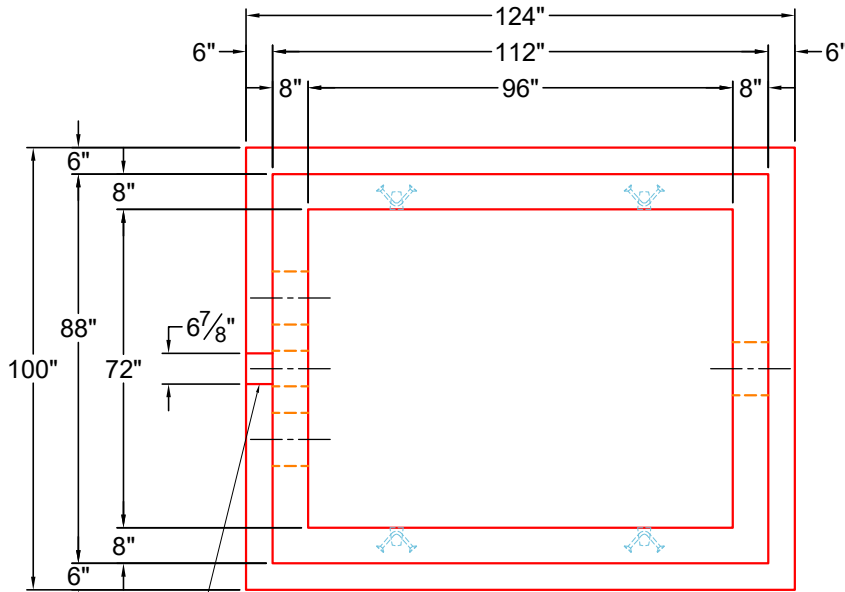
FIRST POUR DRAWING



RIGHT SIDE

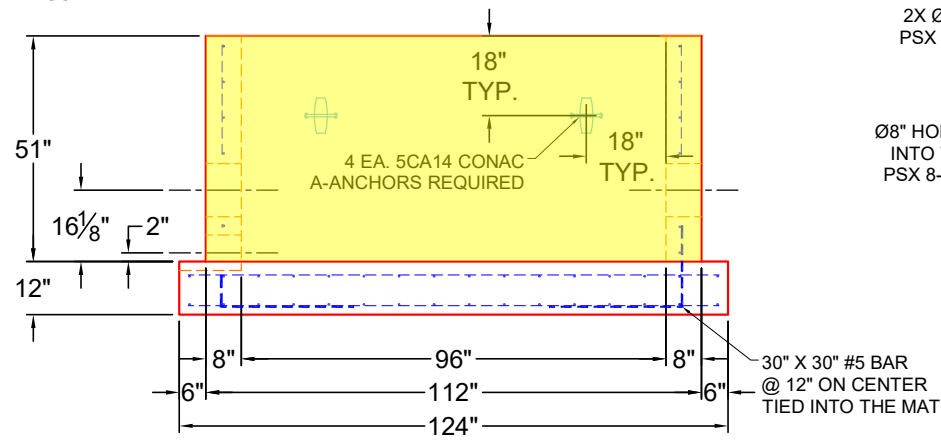
		PRODUCTION WORK ORDER QUALITY CONTROL CHECKLIST <input type="checkbox"/> ALL DIMENSIONS CORRECT. <input type="checkbox"/> LIFTERS INSTALLED. <input type="checkbox"/> OPENING CORRECT LOCATION. <input type="checkbox"/> REINFORCING CORRECT. <input type="checkbox"/> SURFACE QUALITY ACCEPTABLE. <input type="checkbox"/> EDGES CHAMFERED. <input type="checkbox"/> ALL PATCHWORK ACCEPTABLE.	PRODUCT I.D.: BX7296-08W12F-06EB-VFCDARED PRODUCT VIEW: RIGHT SIDE UP PLANT: BEAVER DAM, KY. WEIGHT: 23,014 LBS. TOP SECTION JOINT: N/A BASE SECTION JOINT: N/A QC CHECK INITIALS:	DESCRIPTION: 72" X 96" X 51" TALL VAULT CUSTOMER: FERGUSON WATERWORKS #1491 PROJECT: MARVINS LIFT STATION STRUCTURE: VALVE VAULT ORDER NO: 25-2418 PC: C. GOFF DATE: 11/6/25	DRAWING: J. COPPAGE SCALE: NTS PG. 1 of 1
---	--	--	---	---	--

THIS DRAWING IS THE PROPERTY OF INFRASTRUCTURE PRECAST, INC. ANY USE OR DUPLICATION OF THIS DRAWING WITHOUT PRIOR AUTHORIZATION IS STRICTLY PROHIBITED.



TOP VIEW

6 7/8" WIDE 2" DEEP RECESS IN THE EXTENDED BASE FLANGE FOR 4" DUCTILE

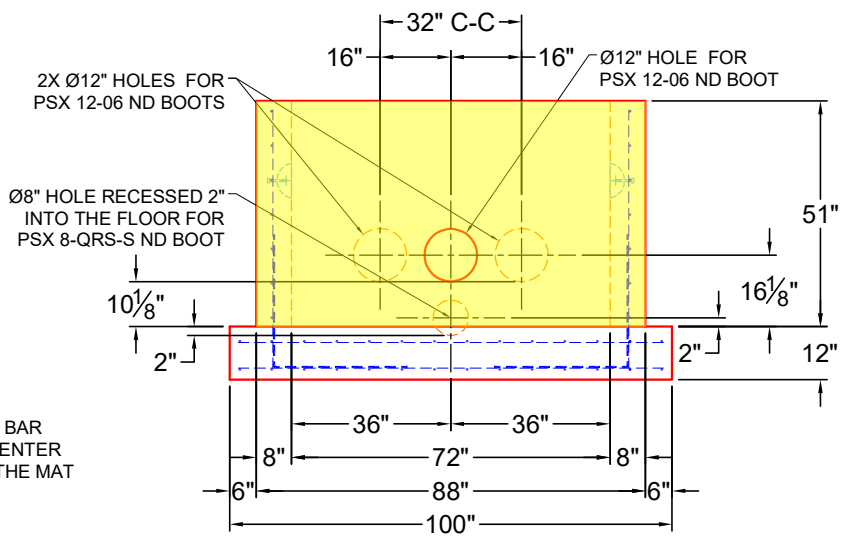


FRONT VIEW


GENERAL NOTES:

1. MANUFACTURED TO ASTM C-913 (LATEST REVISION).
2. CONCRETE: 5,000 PSI AT 28 DAYS.
3. REINFORCING:
WALLS - #5 BAR @ 8" C-C E.W.
FLOOR - #5 BAR @ 8" C-C E.W. DBL MAT
PER ASTM A615 (GRADE 60).
4. WEIGHTS:
FIRST POUR - 12,489 LBS.
SECOND POUR - 12,410 LBS.
TOTAL - 24,899 LBS
5. VAULT JOINT TO BE SEALED WITH CS-102 ROLL BUTYL MASTIC SUPPLIED BY ICAST
6. STRUCTURE TO GET 2 INTERNAL COATINGS OF CARBOLINE 300M.
7. ICAST TO PROVIDE 1X PSX 8QRS-S ND BOOT AND 3X PSX 12-06 ND BOOTS.

SECOND POUR DRAWING



RIGHT SIDE

		QUALITY CONTROL CHECKLIST <input type="checkbox"/> ALL DIMENSIONS CORRECT. <input type="checkbox"/> LIFTERS INSTALLED. <input type="checkbox"/> OPENING CORRECT LOCATION. <input type="checkbox"/> REINFORCING CORRECT. <input type="checkbox"/> SURFACE QUALITY ACCEPTABLE. <input type="checkbox"/> EDGES CHAMFERED. <input type="checkbox"/> ALL PATCHWORK ACCEPTABLE.	PRODUCT I.D.: BX7296-08W12F-06EB-VFCDARED PRODUCT VIEW: RIGHT SIDE UP PLANT: BEAVER DAM, KY. WEIGHT: 23,014 LBS. TOP SECTION JOINT: N/A BASE SECTION JOINT: N/A QC CHECK INITIALS:	DESCRIPTION: 72" X 96" X 51" TALL VAULT CUSTOMER: FERGUSON WATERWORKS #1491 PROJECT: MARVINS LIFT STATION STRUCTURE: VALVE VAULT ORDER NO: 25-2418 PC: C. GOFF DATE: 11/6/25	DRAWING: J. COPPAGE SCALE: NTS PG. 1 of 1
---	--	---	---	---	--