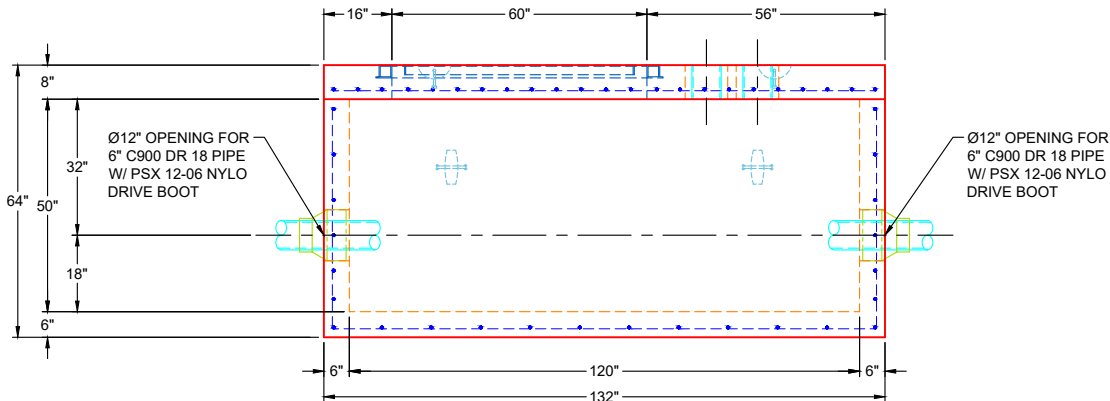
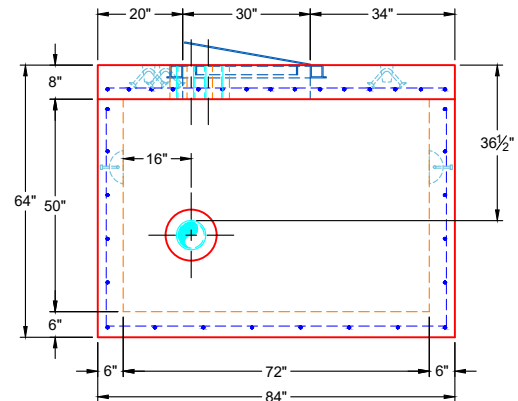


PLAN VIEW

- GENERAL NOTES:**
- PER ASTM C-913 (LATEST REVISION) SPECIFICATIONS
 - CONCRETE: 5,000 PSI AT 28 DAYS
 - REINFORCEMENT AS NOTED
 - FLAT LID: #5 BAR @ 6" C.C. E.W. (GRADE 60)
 - BASE: #4 BAR @ 12" C.C. E.W. (GRADE 60)
 - WEIGHTS:
 8" FLAT LID 6,235 LBS
 50" BASE 15,740 LBS
 TOTAL WEIGHT 21,975 LBS
 - CONTRACTOR TO VERIFY ALL DIMENSIONS BEFORE MANUFACTURE
 - HALLIDAY W1S 30" X 60" HATCH SUPPLIED BY ICAST - HATCH TO BE CAST INTO FLAT LID
 - PSX NYLO DRIVE BOOTS SUPPLIED BY ICAST
 - JOINT SEALANT: CONSEAL CS-102 - 1" (PRIMARY & SECONDARY ROWS)
 EXTERIOR WRAP: CONSEAL CS-212 - 6" WIDE



FRONT VIEW



SIDE VIEW

REVISION INFORMATION

| | |
|-------------|----------------------|
| REV. DATE: | NO REVISIONS TO DATE |
| | |
| | |
| | |
| | |



| | | |
|--|-----------------------|------------|
| SUBMITTAL DRAWING: 72" X 120" FIRE SERVICE VAULT | | |
| CUSTOMER: PHILLIPS BROS. CONSTRUCTION, LLC | | |
| PROJECT: FAMILY SCHOLAR HOUSE | | |
| STRUCTURE: FIRE SERVICE VAULT | | |
| QUOTE/SALES ORDER NO: 25-2383 | | |
| CHECKED BY: B. SMITH | DRAWN BY: K. CARDWELL | |
| DATE: 12/01/25 | SCALE: NTS | PG. 1 OF 1 |