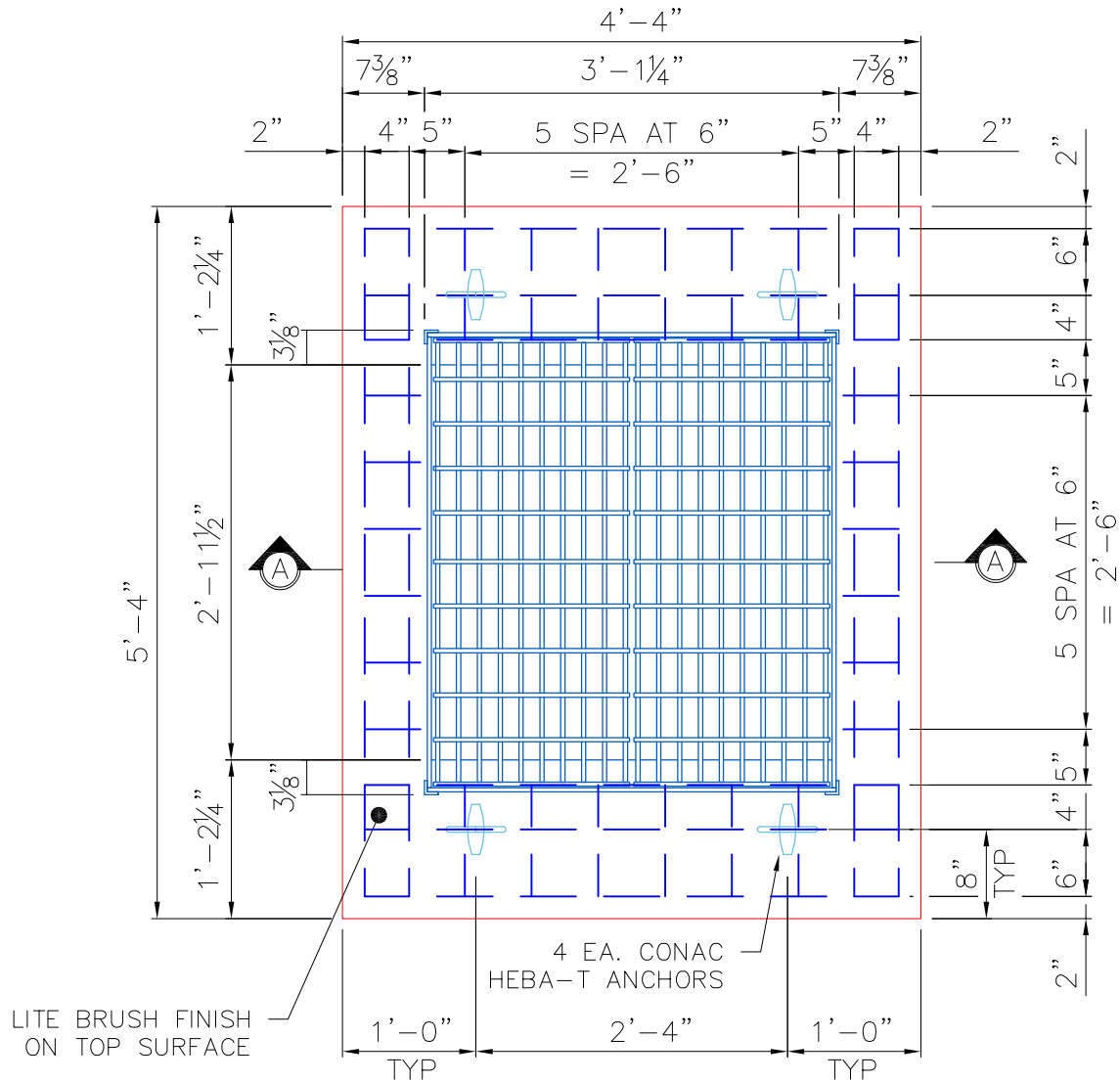


KDOT STATE PROJECT

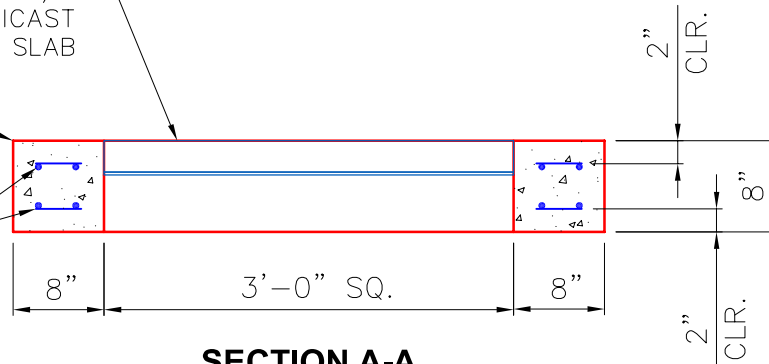


PLAN VIEW

KY DBI TYPE 3 F/G
HOE KY-328 SUPPLIED BY ICAST
TO BE CAST INTO TOP SLAB

ROUND TOP
EDGES

#5 BARS
AT 6" C.C.E.W
TOP & BOTTOM



SECTION A-A

NOTES:

- MANUFACTURE TO ASTM C913 SPECIFICATIONS.
- CONCRETE: 4,500 PSI @ 28 DAYS.
- REINFORCING: #5 BAR AS SHOWN (GRADE 60)

PRODUCTION WORK ORDER

PRODUCT I.D.:
BX036048-08LD08S

DESCRIPTION: CB TOP SLAB 36"x48"x8"
w/36x36 (DBI-3 F/G)



QUALITY CONTROL CHECKLIST

- ALL DIMENSIONS CORRECT.
- LIFTERS INSTALLED.
- OPENING CENTERED.
- REINFORCING CORRECT.
- FLAT SLAB - NO JOINT.
- TOP EDGES ROUNDED.
- ANY PATCHWORK ACCEPTABLE.

PRODUCT VIEW: RIGHT SIDE UP

PLANT: BEAVER DAM, KY.

WEIGHT: 1,362 LBS.

TOP SECTION JOINT: FLAT

BOTTOM JOINT: FLAT

QC CHECK INITIALS:

CUSTOMER: LOUISVILLE PAVING AND CONSTRUCTION

PROJECT: MIDDLETOWN-EASTWOOD TRAIL

STRUCTURE: 3 DBI3

QUOTE/SALES ORDER NO: **25-2311B**

CHECK: B. SMITH

DRAWING: J. HORSLEY

DATE: 03/27/26

SCALE: NTS

PG. 1 of 1

Job Number:

25-2311B

Job Name:

Middletown-Eastwood Trail Top Slabs

Structure:

3 DBI3

Note:

HOE KY-328 Frame Supplied By
iCast To Be Cast Into Flat Lid