

Job Name: 25-2310 GOOSE CREEK SUBDIVISION
 Job Location: Hartsville, TN
 Contractor: Hayes Pipe Supply

Plant: Beaver Dam
 2/4/2026 12:37:03 PM

Tech: C.Russ
 PC: A.Chambers



Structure ID: JB-2

P2 MH048LD12ECC

MH FLAT TOP w/ 24" ECC Hole F/G

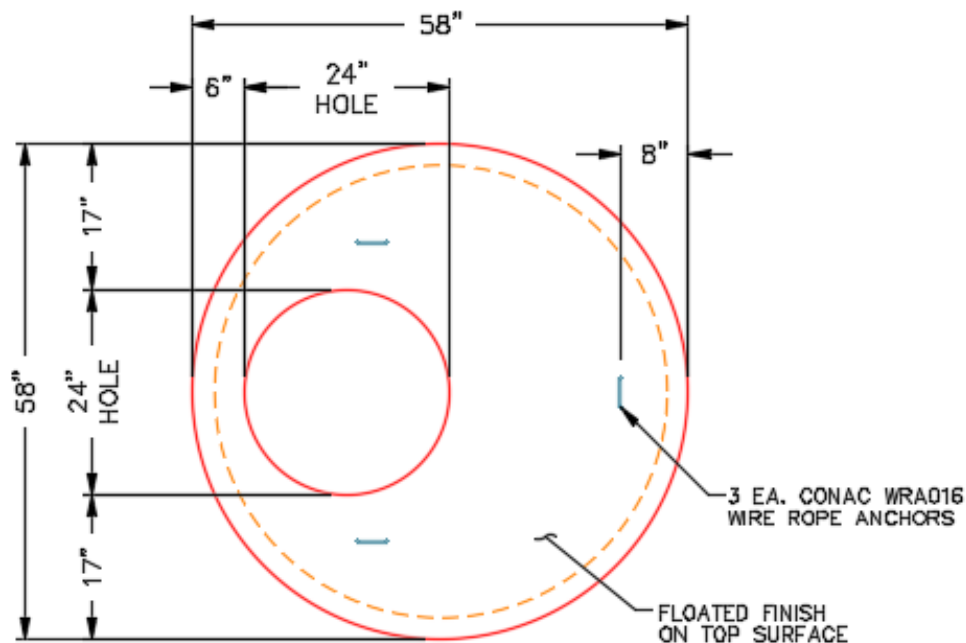
- P3) 24" - CASTING HEIGHT - 6"
- P2) 48" - MH FLAT TOP w/ 24" ECC Hole F/G - 12"
- P1) 48" - MH BASE T/n - 36"
- 1) 48" - SGL 1"x14.5' Butyl (2x)
- 2) Hole - 26
- 3) MH Step ML-10-TDS-NCR - 10"

0 lb
 1561 lb
 3379 lb
 0 lb
 0 lb
 0 lb
 0 lb

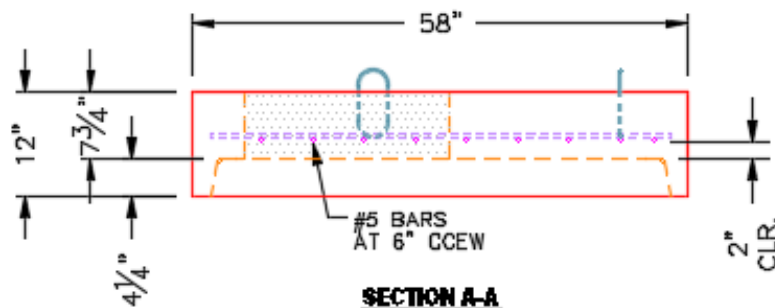
 Structure Total: 4940 lb

Structure Notes:
 1. PER ASTM C478 SPECIFICATIONS.
 2. CONCRETE = 4,000 PSI AT 28 DAYS.
 3. CASTING BY OTHERS.

 REINFORCING PER ASTM A615 (GRADE 60).
 - TOP SLAB (As .62) #5 BARS AT 6" C.C.E.W..
 - RISER/WALLS (As .12)
 - FLOOR (As .31) #5 BARS AT 12" C.C.E.W.



PLAN VIEW



SECTION A-A

Coating (Int):
 Coating (Ext):

Seam Up: Flat
 Seam Dn: Groove

Wall Thickness: 5"

Height (Ext): 12"

Weight (Net): 1561 lb
 Volume (Net): 0.42cu.yd