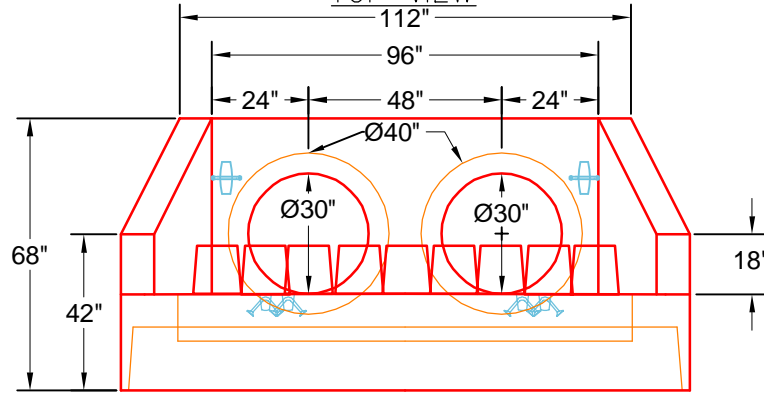
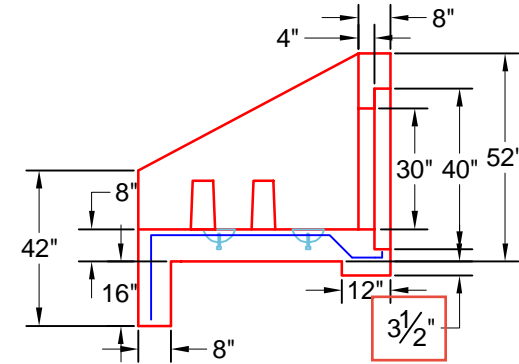


TOP VIEW



FRONT VIEW



SIDE VIEW

**GENERAL NOTES:**

1. MANUFACTURED TO ASTM C-913 (LATEST REVISION).
2. CONCRETE: 4,000 PSI AT 28 DAYS.
3. REINFORCING: #5 BAR @ 12" C.C.E.W.
4. WEIGHT: 9,250 LBS
5. 2 REQUIRED

**PRODUCTION WORK ORDER**

PRODUCT I.D.: HWDBLCUSTOM

DESCRIPTION: 30" DOUBLE HEADWALL



**QUALITY CONTROL CHECKLIST**

- ALL DIMENSIONS CORRECT.
- LIFTERS INSTALLED.
- OPENING CENTERED.
- REINFORCING CORRECT.
- SURFACE QUALITY ACCEPTABLE.
- EDGES CHAMFERED.
- ALL PATCHWORK ACCEPTABLE.

PRODUCT VIEW: RIGHT SIDE UP

CUSTOMER: HAYES PIPE SUPPLY

PLANT: BEAVER DAM, KY.

PROJECT: GOOSE CREEK SUBDIVISION

WEIGHT: 9,250 LBS.

STRUCTURE: PCHW 1&2

TOP SECTION JOINT: N/A

ORDER NO: 25-2310

BASE SECTION JOINT: N/A

PC: J.H. ROSS

DRAWING: C.RUSS

QC CHECK INITIALS:

DATE: 8/18/25

SCALE: NTS

PG. 1 of 1