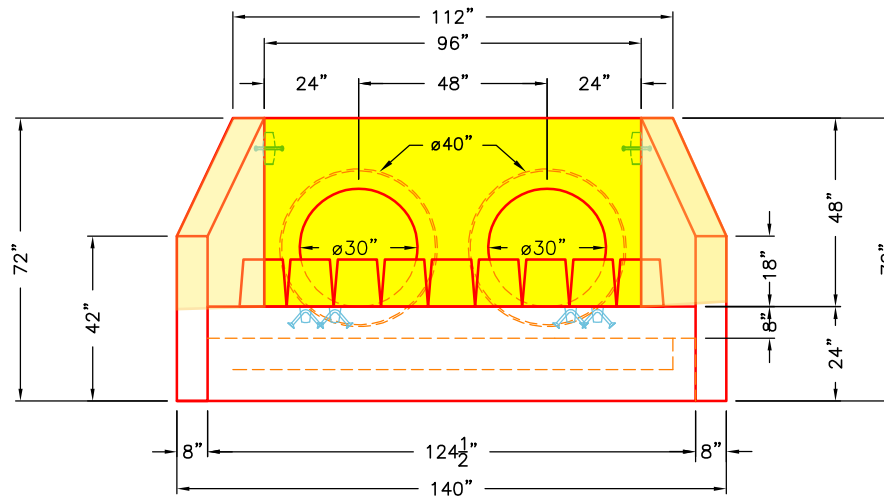
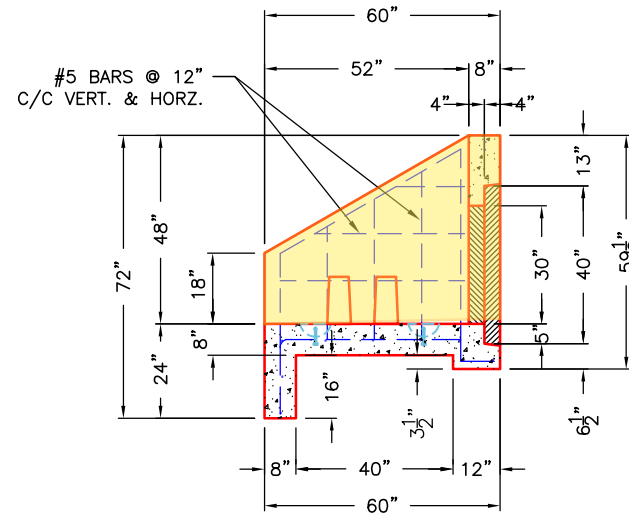


TOP VIEW



FRONT VIEW



SIDE VIEW

GENERAL NOTES:

1. MANUFACTURED PER ASTM C913 (LATEST REVISION).
2. CONCRETE = 4,000 PSI AT 28 DAYS.
3. REINFORCING PER ASTM A615 (GRADE 60).
#5 BARS AT 12" C.C.E.W.

1ST POUR (FLOOR) = 9,230 LBS
2ND POUR (WALLS) = 4,208 LBS

PRODUCTION WORK ORDER

PRODUCT I.D.: HWBLCUSTOM

DESCRIPTION: 30" DOUBLE HEADWALL



QUALITY CONTROL CHECKLIST

- ALL DIMENSIONS CORRECT.
- LIFTERS INSTALLED.
- STEPPED HOLE CORRECT.
- REINFORCING CORRECT.
- SURFACE QUALITY ACCEPTABLE.
- EDGES CHAMFERED.
- ALL PATCHWORK ACCEPTABLE.

PRODUCT VIEW: RIGHT SIDE UP

CUSTOMER: HAYES PIPE SUPPLY

PLANT: BEAVER DAM, KY.

PROJECT: GOOSE CREEK SUBDIVISION

WEIGHT: 13,438 LBS.

STRUCTURE ID.: PCHW 1A

TOP SECTION JOINT: N/A

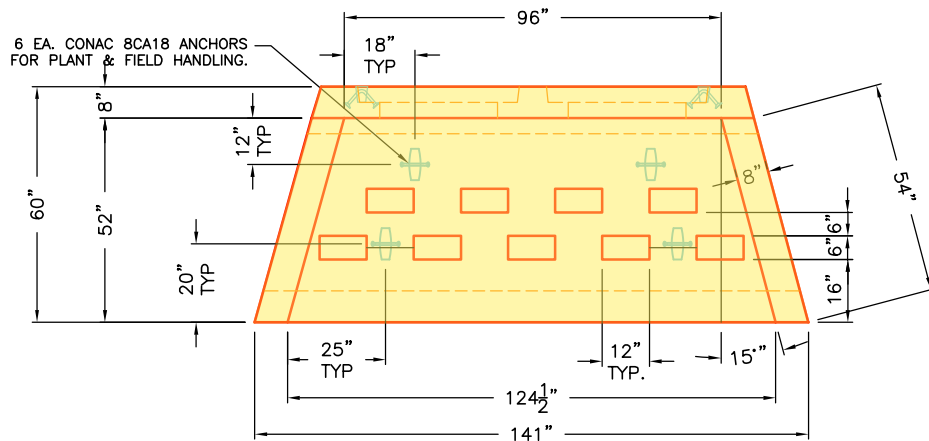
SALES ORDER NO: 25-2310

BASE SECTION JOINT: N/A

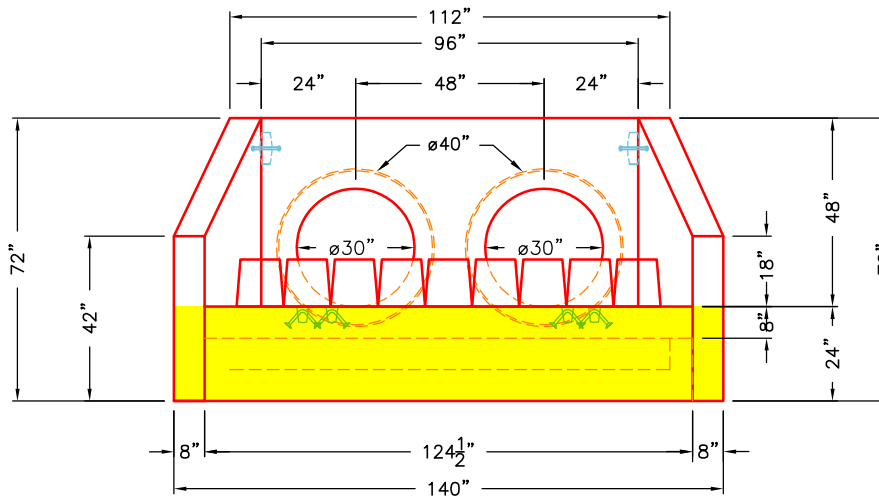
CHECK: B. SMITH DRAWING: J. HORSLEY

QC CHECK INITIALS:

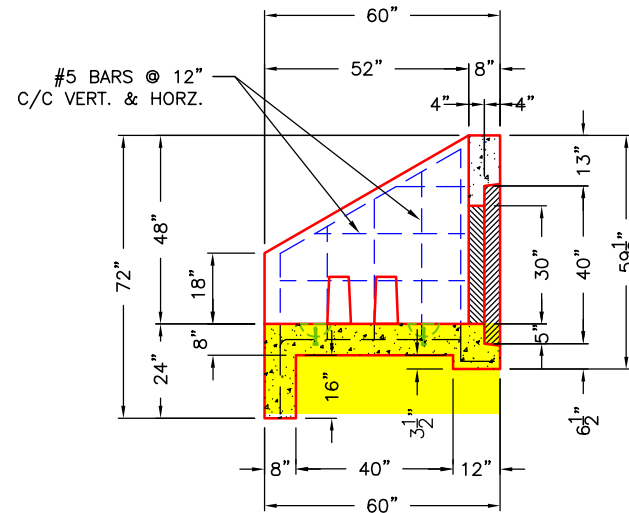
DATE: 02/06/26 SCALE: NTS PG. 1 of 1



TOP VIEW



FRONT VIEW



SIDE VIEW

GENERAL NOTES:

1. MANUFACTURED PER ASTM C913 (LATEST REVISION).
2. CONCRETE = 4,000 PSI AT 28 DAYS.
3. REINFORCING PER ASTM A615 (GRADE 60).
#5 BARS AT 12" C.C.E.W.

1ST POUR (FLOOR) = 9,230 LBS
2ND POUR (WALLS) = 4,208 LBS

PRODUCTION WORK ORDER

PRODUCT I.D.: HWBLCUSTOM

DESCRIPTION: 30" DOUBLE HEADWALL



QUALITY CONTROL CHECKLIST

- ALL DIMENSIONS CORRECT.
- LIFTERS INSTALLED.
- STEPPED HOLE CORRECT.
- REINFORCING CORRECT.
- SURFACE QUALITY ACCEPTABLE.
- EDGES CHAMFERED.
- ALL PATCHWORK ACCEPTABLE.

PRODUCT VIEW: RIGHT SIDE UP

CUSTOMER: HAYES PIPE SUPPLY

PLANT: BEAVER DAM, KY.

PROJECT: GOOSE CREEK SUBDIVISION

WEIGHT: 13,438 LBS.

STRUCTURE ID.: PCHW 2

TOP SECTION JOINT: N/A

SALES ORDER NO: 25-2310

BASE SECTION JOINT: N/A

CHECK: B. SMITH

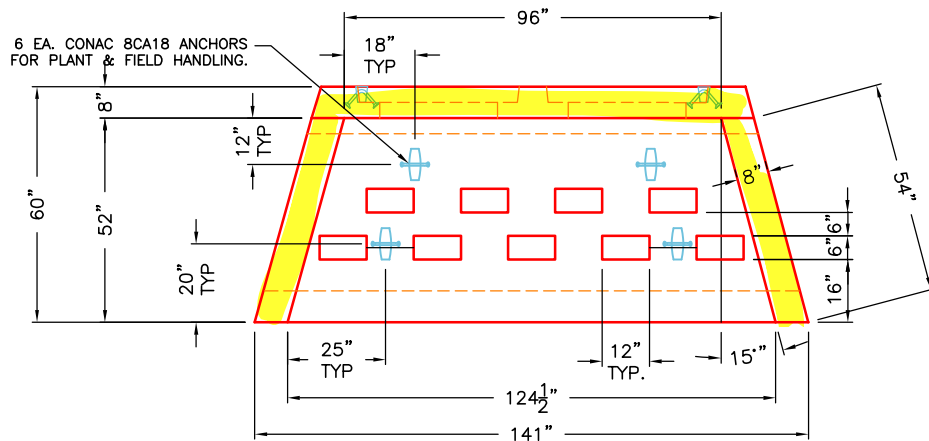
DRAWING: J. HORSLEY

QC CHECK INITIALS:

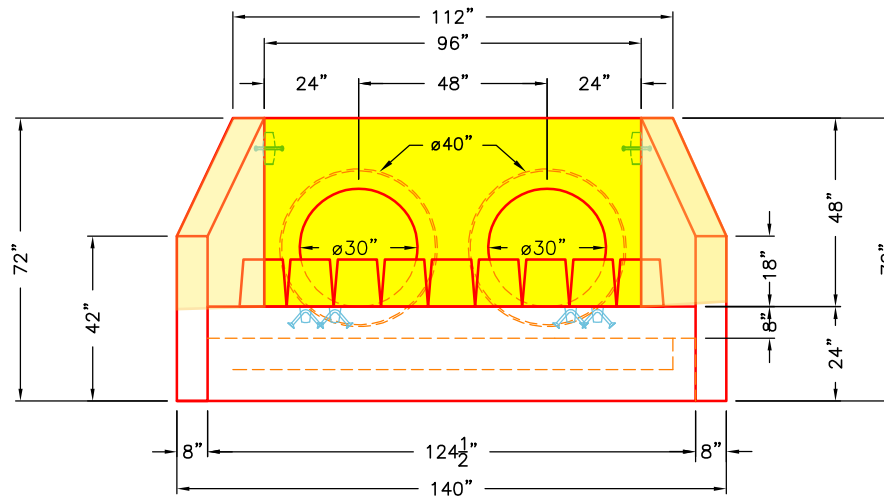
DATE: 02/06/26

SCALE: NTS

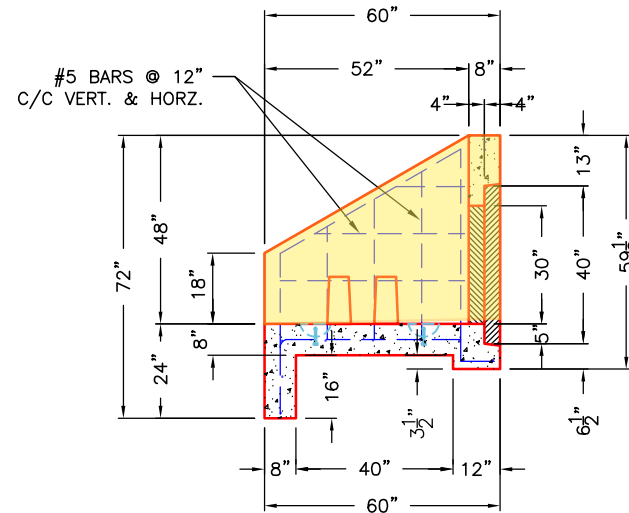
PG. 1 of 1



TOP VIEW



FRONT VIEW



SIDE VIEW

GENERAL NOTES:

1. MANUFACTURED PER ASTM C913 (LATEST REVISION).
2. CONCRETE = 4,000 PSI AT 28 DAYS.
3. REINFORCING PER ASTM A615 (GRADE 60).
#5 BARS AT 12" C.C.E.W.

1ST POUR (FLOOR) = 9,230 LBS
2ND POUR (WALLS) = 4,208 LBS

PRODUCTION WORK ORDER

PRODUCT I.D.: HWBLCUSTOM

DESCRIPTION: 30" DOUBLE HEADWALL



QUALITY CONTROL CHECKLIST

- ALL DIMENSIONS CORRECT.
- LIFTERS INSTALLED.
- STEPPED HOLE CORRECT.
- REINFORCING CORRECT.
- SURFACE QUALITY ACCEPTABLE.
- EDGES CHAMFERED.
- ALL PATCHWORK ACCEPTABLE.

PRODUCT VIEW: RIGHT SIDE UP

CUSTOMER: HAYES PIPE SUPPLY

PLANT: BEAVER DAM, KY.

PROJECT: GOOSE CREEK SUBDIVISION

WEIGHT: 13,438 LBS.

STRUCTURE ID.: PCHW 2A

TOP SECTION JOINT: N/A

SALES ORDER NO: 25-2310

BASE SECTION JOINT: N/A

CHECK: B. SMITH DRAWING: J. HORSLEY

QC CHECK INITIALS:

DATE: 02/06/26 SCALE: NTS PG. 1 of 1



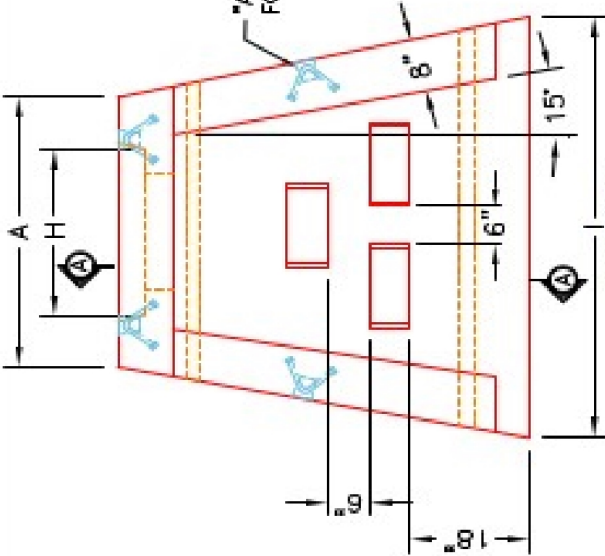
Structure ID: HW 3 (HWSF 18in)

P1 HWSF18D

18" - SLOPED & FLARED HEADWALL w/DISS F/F

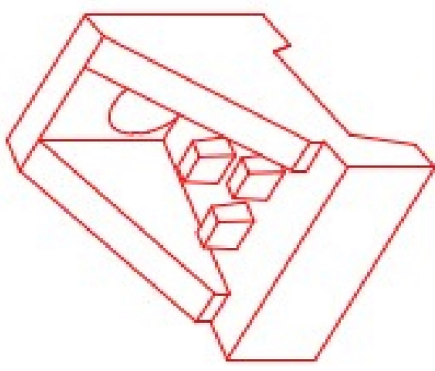
DIMENSIONS											
PIPE Ø	A	B	C	D	E	F	G	H	I	WEIGHT	DISSIPATORS
18"	3'-6"	4'-4"	2'-10"	1'-6"	5'-0"	4"	3 1/2"	2'-2"	6'-0"	5,127 LBS.	3 EA.

"A-ANCHOR" LIFTING SYSTEM FOR PLANT & FIELD HANDLING.

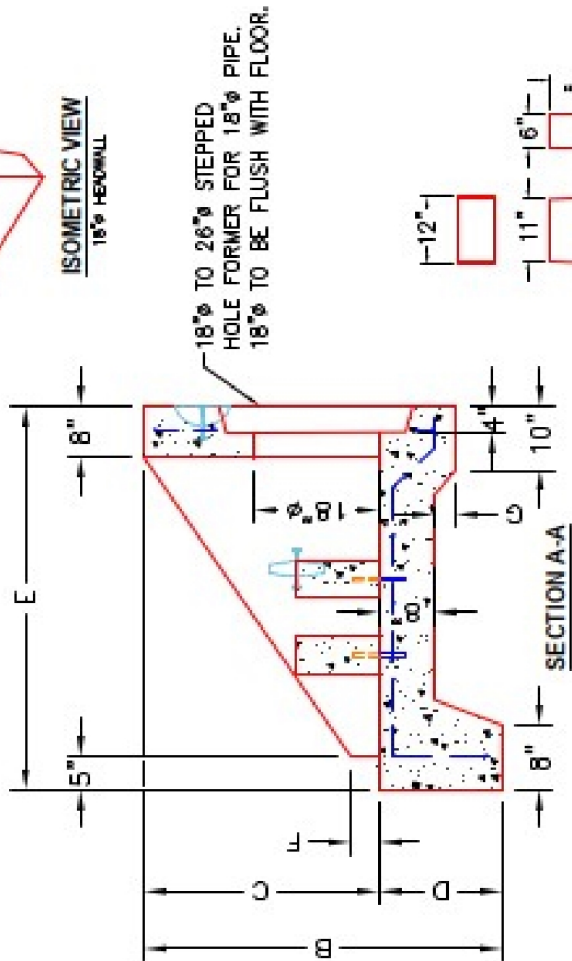


PLAN VIEW

12"x12"x6" ENERGY DISSIPATOR BLOCKS (3 EA.)



ISOMETRIC VIEW
18" Ø HEXAGONAL



SECTION A-A

- FRONT ELEVATION**
- NOTES:**
- CONCRETE: 4500 PSI @ 28 DAYS.
 - REINFORCING: #4 BHR @ 12" C/C E.W. - GRADE 60. (WITH 2" CONCRETE COVER MINIMUM)
 - REINFORCING BARS TO BE TACK WELDED OR TIED.
 - DRAWING TO BE USED IN CONJUNCTION WITH KYTC STD. DRAWING R018-C020-03 AND THE STANDARD SPECIFICATIONS FOR ROAD AND BRIDGE CONSTRUCTION.
 5. CHAMFER ON ALL EXPOSED EDGES.



DISSIPATOR BLOCK DETAIL

PRODUCTION WORK ORDER		PRODUCT I.D.: HWSF18D	DESCRIPTION: KYTC 18" Ø SLOPED & FLARED HEADWALL w/DISSIPATORS
QUALITY CONTROL CHECKLIST		PRODUCT VIEW: RIGHT SIDE UP	CUSTOMER: STOCK
<input type="checkbox"/> ALL DIMENSIONS CORRECT. <input type="checkbox"/> LIFTERS INSTALLED. <input type="checkbox"/> STEPPED HF CORRECT SIZE. <input type="checkbox"/> REINFORCING CORRECT. <input type="checkbox"/> DISSIPATOR BLOCK INSTALLED. <input type="checkbox"/> EDGES CHAMFERED. <input type="checkbox"/> ALL PATCHWORK ACCEPTABLE.		PLANT: BEAVER DAM, KY.	PROJECT: STOCK INVENTORY
		WEIGHT: 5,127 LBS.	STRUCTURE ID.: N/A
		TOP SECTION JOINT: N/A	QUOTE/SALES ORDER NO: N/A
		BASE SECTION JOINT: N/A	CHECK: J.H. ROSS, PE
		QC CHECK INITIALS:	DATE: 09/09/22
		SCALE: NTS	PG. 1 OF 1





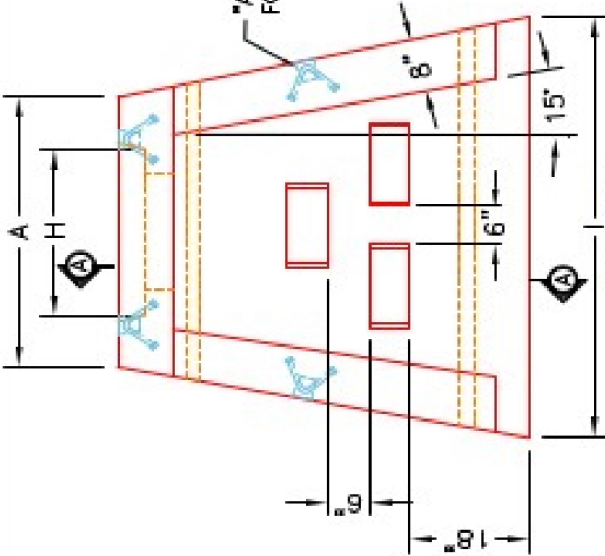
Structure ID: HW 4 (HWSF 18in)

P1 HWSF18D

18" - SLOPED & FLARED HEADWALL w/DISS F/F

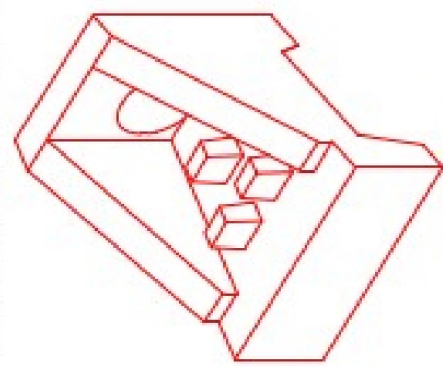
DIMENSIONS											
PIPE Ø	A	B	C	D	E	F	G	H	I	WEIGHT	DISSIPATORS
18"	3'-6"	4'-4"	2'-10"	1'-6"	5'-0"	4"	3 1/2"	2'-2"	6'-0"	5,127 LBS.	3 EA.

"A-ANCHOR" LIFTING SYSTEM FOR PLANT & FIELD HANDLING.

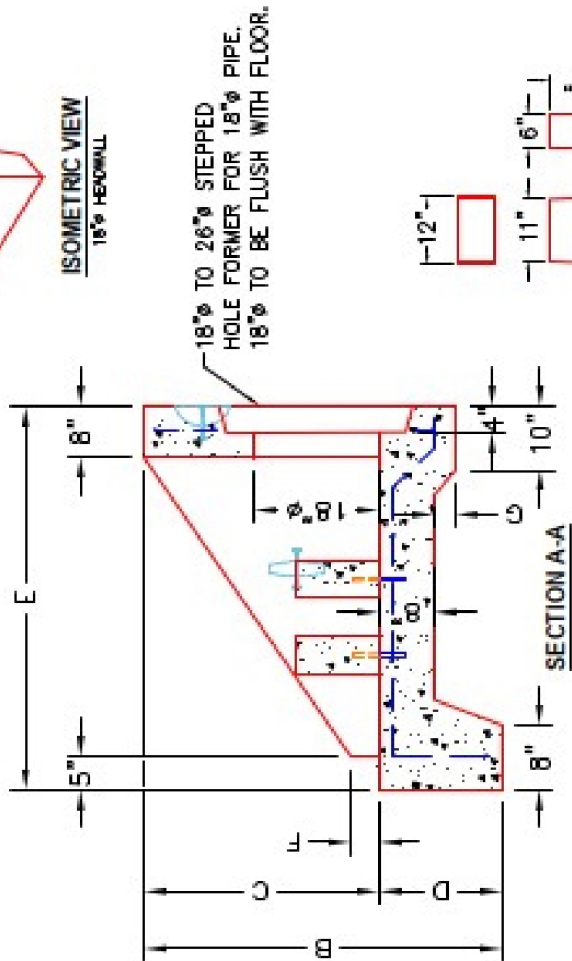


PLAN VIEW

12"x12"x6" ENERGY DISSIPATOR BLOCKS (3 EA.)

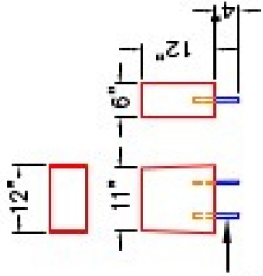


ISOMETRIC VIEW 18" Ø HEXAGONAL



SECTION A-A

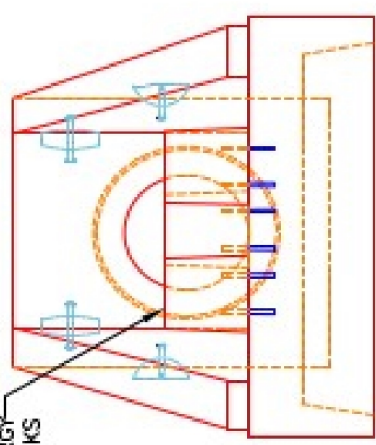
18" Ø TO 26" Ø STEPPED HOLE FORMER FOR 18" Ø PIPE. 18" Ø TO BE FLUSH WITH FLOOR.



DISSIPATOR BLOCK DETAIL

2-#5 BAR STUBS FOR POST MOUNTING TO HEADWALL FLOOR.

FRONT ELEVATION



- NOTES:**
- CONCRETE: 4500 PSI @ 28 DAYS.
 - REINFORCING: #4 BAR @ 12" C/C E.W. - GRADE 60. (WITH 2" CONCRETE COVER MINIMUM)
 - REINFORCING BARS TO BE TACK WELDED OR TIED.
 - DRAWING TO BE USED IN CONJUNCTION WITH KYTC STD. DRAWING P18-020-03 AND THE STANDARD SPECIFICATIONS FOR ROAD AND BRIDGE CONSTRUCTION.
 5. CHAMFER ON ALL EXPOSED EDGES.

PRODUCTION WORK ORDER		PRODUCT I.D.: HWSF18D	DESCRIPTION: KYTC 18" Ø SLOPED & FLARED HEADWALL W/DISSIPATORS
QUALITY CONTROL CHECKLIST		PRODUCT VIEW: RIGHT SIDE UP	CUSTOMER: STOCK
<input type="checkbox"/> ALL DIMENSIONS CORRECT. <input type="checkbox"/> LIFTERS INSTALLED. <input type="checkbox"/> STEPPED HF CORRECT SIZE. <input type="checkbox"/> REINFORCING CORRECT. <input type="checkbox"/> DISSIPATOR BLOCK INSTALLED. <input type="checkbox"/> EDGES CHAMFERED. <input type="checkbox"/> ALL PATCHWORK ACCEPTABLE.		PLANT: BEAVER DAM, KY.	PROJECT: STOCK INVENTORY
		WEIGHT: 5,127 LBS.	STRUCTURE ID.: N/A
		TOP SECTION JOINT: N/A	QUOTE/SALES ORDER NO: N/A
		BASE SECTION JOINT: N/A	CHECK: J.H. ROSS, PE
		QC CHECK INITIALS:	DRAWING: N. RICHARDS
		DATE: 09/09/22	SCALE: NTS
		PG. 1 OF 1	



Job Name: 25-2310 GOOSE CREEK SUBDIVISION
 Job Location: Hartsville, TN
 Contractor: Hayes Pipe Supply

Plant: Beaver Dam

Tech: C.Russ

2/4/2026 12:36:14 PM

PC: A.Chambers



Structure ID: CB-1

P1 BX36960606VF

BOX BASE 6inW, 6inF, Variable Ht F/n

- P3) 28" x 28" - CASTING HEIGHT - 6"
- P2) 36" x 96" - BX FLAT LID 6inW w/(2) 28"x28" HOLES F/F - 6"
- P1) 36" x 96" - BOX BASE 6inW, 6inF, Variable Ht F/n - 46"
- 1) 36" x 96" - Conseal CS-102 1.00"
- 1) 28" x 28" - Conseal CS-102 1.00"
- 4) Hole - 40

0 lb
 1425 lb
 6749 lb
 0 lb
 0 lb
 0 lb

 Structure Total: 8174 lb

Structure Notes:

1. PER ASTM C913 SPECIFICATIONS.
2. CONCRETE = 4,000 PSI AT 28 DAYS.
3. NO STEPS & NO INVERT CHANNEL.
4. CASTING BY OTHERS.

REINFORCING PER ASTM A615 (GRADE 60).

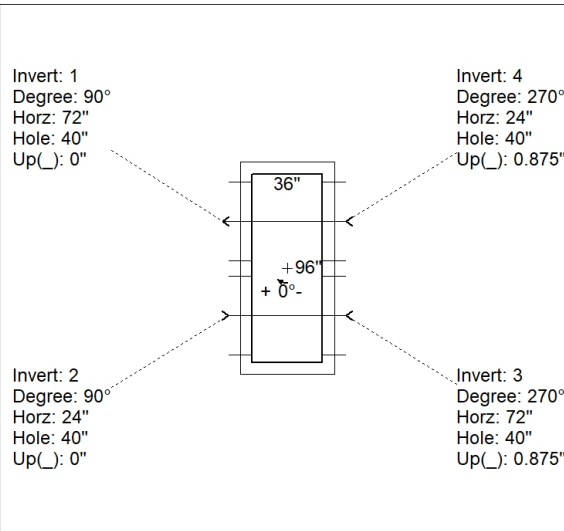
- TOP SLAB (As .62) #5 BARS AT 6" C.C.E.W.
- WALLS (As .12) #5 BARS AT 12" C.C.E.W.
- FLOOR (As .12) #5 BARS AT 12" C.C.E.W.

Rim: 477.92' Rim to Invert: 4.56' Slack: 0.22" Sump: 3.5" Step Position:

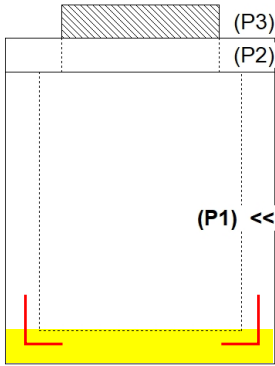
Position	Elev	Angle	Ext. (cw)	Pipe	Pipe OD	Connector	Hole	Horz Size	Up ()	Offset
Invert 1	473.36'	90°	78"	30" RCP B WALL	37"	Hole 40	40"	40"	0"	24"
Invert 2	473.36'	90°	30"	30" RCP B WALL	37"	Hole 40	40"	40"	0"	-24"
Invert 3	473.43'	270°	78"	30" RCP B WALL	37"	Hole 40	40"	40"	0.875"	24"
Invert 4	473.43'	270°	30"	30" RCP B WALL	37"	Hole 40	40"	40"	0.875"	-24"
Invert 5										
Invert 6										
Invert 7										
Invert 8										

RIGHT-SIDE UP VIEW (int. dimensions)

UPSIDE-DOWN VIEW (int. dimenions)

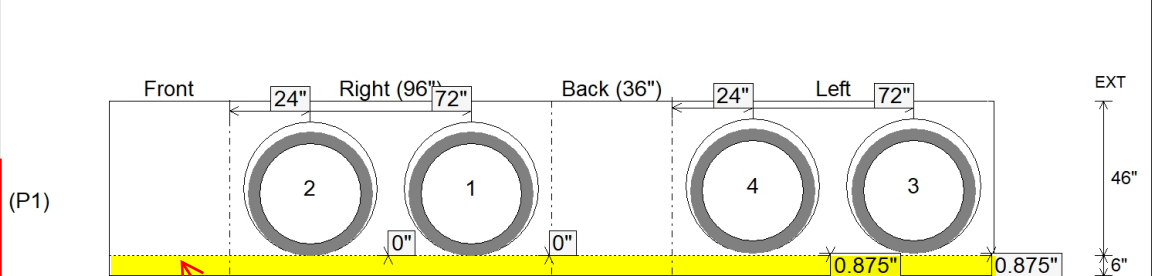


**1ST POR (FLOOR) = 2,610 LBS
 2N POUR (WALLS) = 4,139 LBS**



**1ST POUR (FLOOR)
 STUB #5 L BARS OUT TOP
 OF FLOOR FOR
 CONNECTING WALLS**

INSIDE WALL DIMENSIONS



**CONSEAL CS-231
 BETWEEN FLOOR & WALLS**

Coating (Int): Coating (Ext):	Seam Up: Flat Seam Dn: n/a	Wall Thickness: 6" Floor Height: 6"	Height (Int): 46" Height (Ext): 52"	Weight (Net): 6749 lb Volume (Net): 1.72cu.yd
----------------------------------	-------------------------------	--	--	--

Job Name: 25-2310 GOOSE CREEK SUBDIVISION
 Job Location: Hartsville, TN
 Contractor: Hayes Pipe Supply

Plant: Beaver Dam

Tech: C.Russ

2/4/2026 12:36:14 PM

PC: A.Chambers



Structure ID: CB-1

P1A BX36960606VF

BOX BASE 6inW, 6inF, Variable Ht F/n

- P3) 28" x 28" - CASTING HEIGHT - 6"
- P2) 36" x 96" - BX FLAT LID 6inW w/(2) 28"x28" HOLES F/F - 6"
- P1) 36" x 96" - BOX BASE 6inW, 6inF, Variable Ht F/n - 46"
- 1) 36" x 96" - Conseal CS-102 1.00"
- 1) 28" x 28" - Conseal CS-102 1.00"
- 4) Hole - 40

0 lb
 1425 lb
 6749 lb
 0 lb
 0 lb
 0 lb

 Structure Total: 8174 lb

Structure Notes:

1. PER ASTM C913 SPECIFICATIONS.
2. CONCRETE = 4,000 PSI AT 28 DAYS.
3. NO STEPS & NO INVERT CHANNEL.
4. CASTING BY OTHERS.

REINFORCING PER ASTM A615 (GRADE 60).

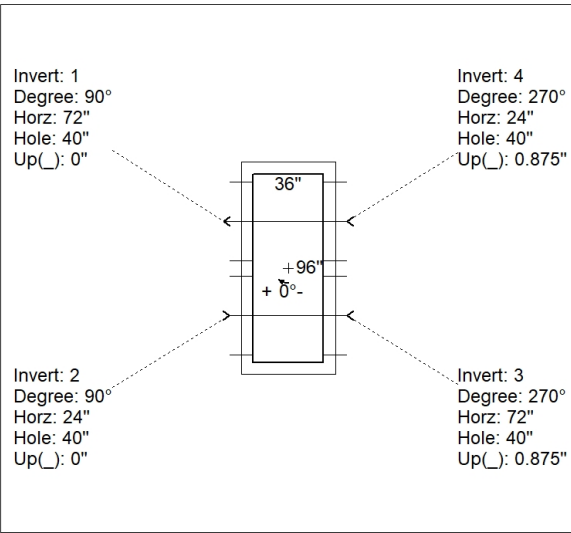
- TOP SLAB (As .62) #5 BARS AT 6" C.C.E.W.
- WALLS (As .12) #5 BARS AT 12" C.C.E.W.
- FLOOR (As .12) #5 BARS AT 12" C.C.E.W.

Rim: 477.92' Rim to Invert: 4.56' Slack: 0.22" Sump: 3.5" Step Position:

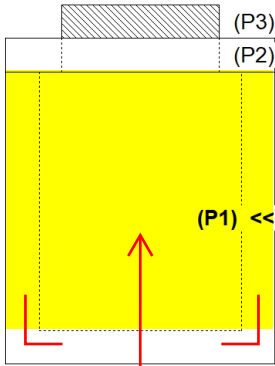
Position	Elev	Angle	Ext. (cw)	Pipe	Pipe OD	Connector	Hole	Horz Size	Up ()	Offset
Invert 1	473.36'	90°	78"	30" RCP B WALL	37"	Hole 40	40"	40"	0"	24"
Invert 2	473.36'	90°	30"	30" RCP B WALL	37"	Hole 40	40"	40"	0"	-24"
Invert 3	473.43'	270°	78"	30" RCP B WALL	37"	Hole 40	40"	40"	0.875"	24"
Invert 4	473.43'	270°	30"	30" RCP B WALL	37"	Hole 40	40"	40"	0.875"	-24"
Invert 5										
Invert 6										
Invert 7										
Invert 8										

RIGHT-SIDE UP VIEW (int. dimensions)

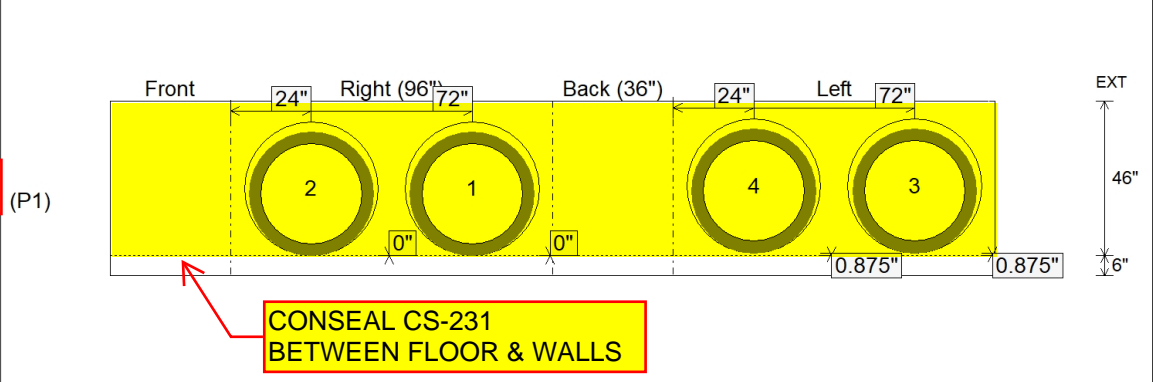
UPSIDE-DOWN VIEW (int. dimenions)



1ST POR (FLOOR) = 2,610 LBS
 2N POUR (WALLS) = 4,139 LBS



INSIDE WALL DIMENSIONS



2ND POUR (WALLS)

CONSEAL CS-231
 BETWEEN FLOOR & WALLS

Coating (Int): Coating (Ext):	Seam Up: Flat Seam Dn: n/a	Wall Thickness: 6" Floor Height: 6"	Height (Int): 46" Height (Ext): 52"	Weight (Net): 6749 lb Volume (Net): 1.72cu.yd
----------------------------------	-------------------------------	--	--	--

Job Name: 25-2310 GOOSE CREEK SUBDIVISION
 Job Location: Hartsville, TN
 Contractor: Hayes Pipe Supply

Plant: Beaver Dam

Tech: C.Russ

2/4/2026 12:37:02 PM

PC: A.Chambers



Structure ID: CB-1

P2 BX036096-06LD06S

BX FLAT LID 6inW w/(2) 28"x28" HOLES F/F

- P3) 28" x 28" - CASTING HEIGHT - 6"
- P2) 36" x 96" - BX FLAT LID 6inW w/(2) 28"x28" HOLES F/F - 6"
- P1) 36" x 96" - BOX BASE 6inW, 6inF, Variable Ht F/n - 46"
- 1) 36" x 96" - Conseal CS-102 1.00"
- 1) 28" x 28" - Conseal CS-102 1.00"
- 4) Hole - 40

0 lb
 1425 lb
 6749 lb
 0 lb
 0 lb
 0 lb
 0 lb

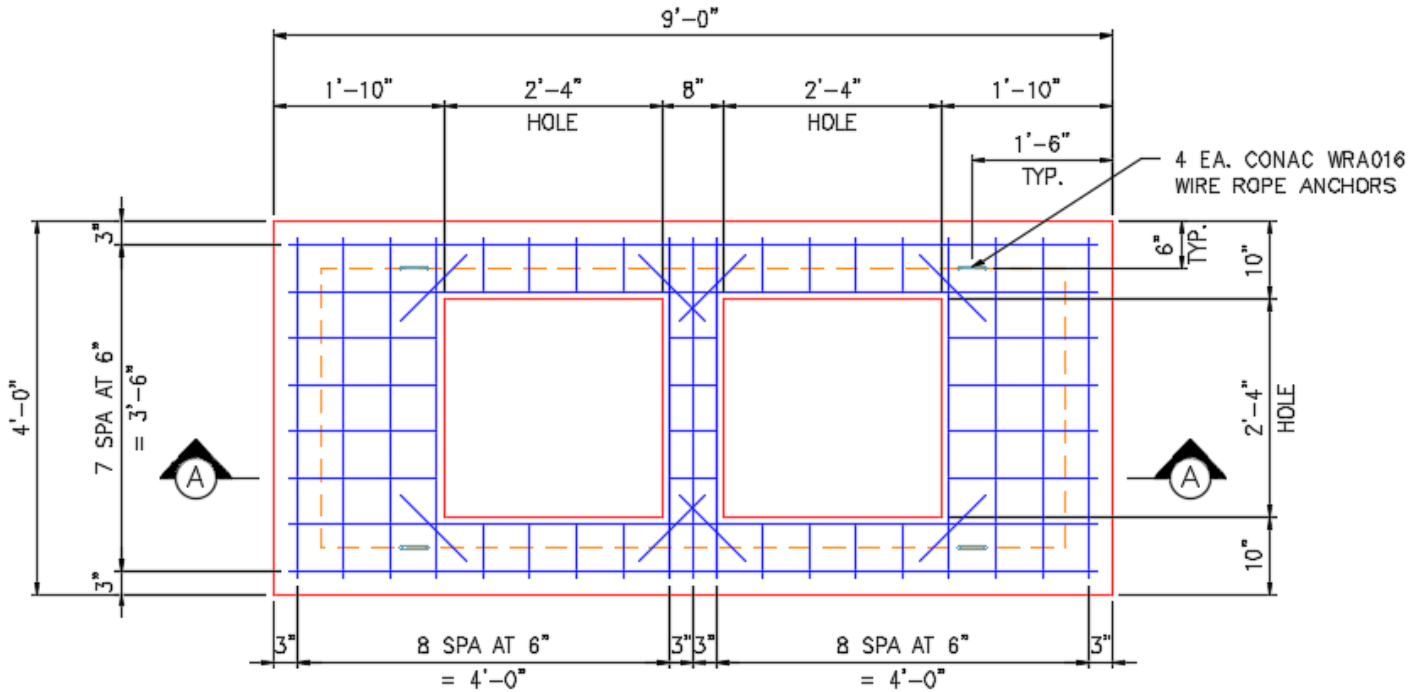
Structure Total: 8174 lb

Structure Notes:

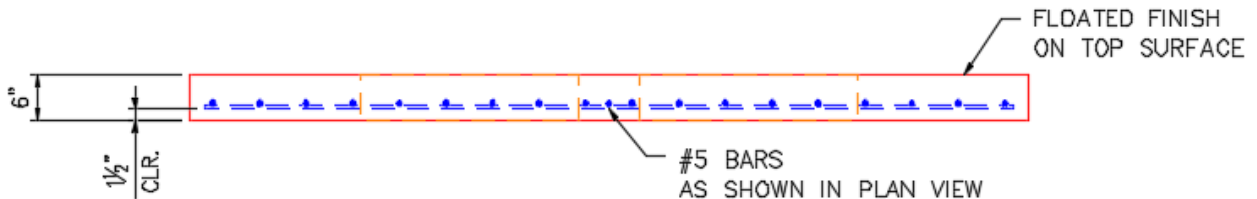
1. PER ASTM C913 SPECIFICATIONS.
2. CONCRETE = 4,000 PSI AT 28 DAYS.
3. NO STEPS & NO INVERT CHANNEL.
4. CASTING BY OTHERS.

REINFORCING PER ASTM A615 (GRADE 60).

- TOP SLAB (As .62) #5 BARS AT 6" C.C.E.W.
- WALLS (As .12) #5 BARS AT 12" C.C.E.W.
- FLOOR (As .12) #5 BARS AT 12" C.C.E.W.



PLAN VIEW



SECTION A-A

Coating (Int):
 Coating (Ext):

Seam Up: Flat
 Seam Dn: Flat

Wall Thickness: 6"

Height (Ext): 6"

Weight (Net): 1425 lb
 Volume (Net): 0.36cu.yd

Job Name: 25-2310 GOOSE CREEK SUBDIVISION
 Job Location: Hartsville, TN
 Contractor: Hayes Pipe Supply

Plant: Beaver Dam
 2/4/2026 12:36:14 PM

Tech: C.Russ
 PC: A.Chambers



Structure ID: CB-2

P1 BX36960606VF

BOX BASE 6inW, 6inF, Variable Ht F/n

- P3) 28" x 28" - CASTING HEIGHT - 6"
- P2) 36" x 96" - BX FLAT LID 6inW w/(2) 28"x28" HOLES F/F - 6"
- P1) 36" x 96" - BOX BASE 6inW, 6inF, Variable Ht F/n - 51"
- 1) 36" x 96" - Conseal CS-102 1.00"
- 1) 28" x 28" - Conseal CS-102 1.00"
- 4) Hole - 40

0 lb
 1425 lb
 7474 lb
 0 lb
 0 lb
 0 lb

 Structure Total: 8899 lb

Structure Notes:

1. PER ASTM C913 SPECIFICATIONS.
2. CONCRETE = 4,000 PSI AT 28 DAYS.
3. NO STEPS & NO INVERT CHANNEL.
4. CASTING BY OTHERS

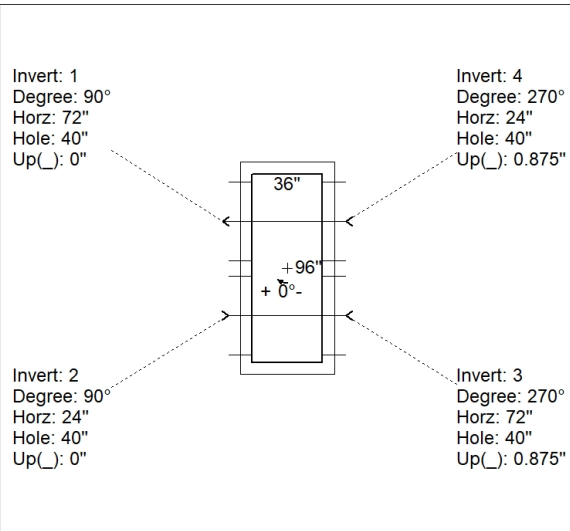
REINFORCING PER ASTM A615 (GRADE 60).
 - TOP SLAB (As .62) #5 BARS AT 6" C.C.E.W.
 - WALLS (As .12) #5 BARS AT 12" C.C.E.W.
 - FLOOR (As .12) #5 BARS AT 12" C.C.E.W.

Rim: 477.92' Rim to Invert: 4.99' Slack: 0.38" Sump: 3.5" Step Position:

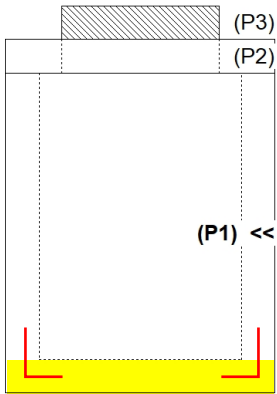
Position	Elev	Angle	Ext. (cw)	Pipe	Pipe OD	Connector	Hole	Horz Size	Up ()	Offset
Invert 1	472.93'	90°	78"	30" RCP B WALL	37"	Hole 40	40"	40"	0"	24"
Invert 2	472.93'	90°	30"	30" RCP B WALL	37"	Hole 40	40"	40"	0"	-24"
Invert 3	473'	270°	78"	30" RCP B WALL	37"	Hole 40	40"	40"	0.875"	24"
Invert 4	473'	270°	30"	30" RCP B WALL	37"	Hole 40	40"	40"	0.875"	-24"
Invert 5										
Invert 6										
Invert 7										
Invert 8										

RIGHT-SIDE UP VIEW (int. dimensions)

UPSIDE-DOWN VIEW (int. dimenions)

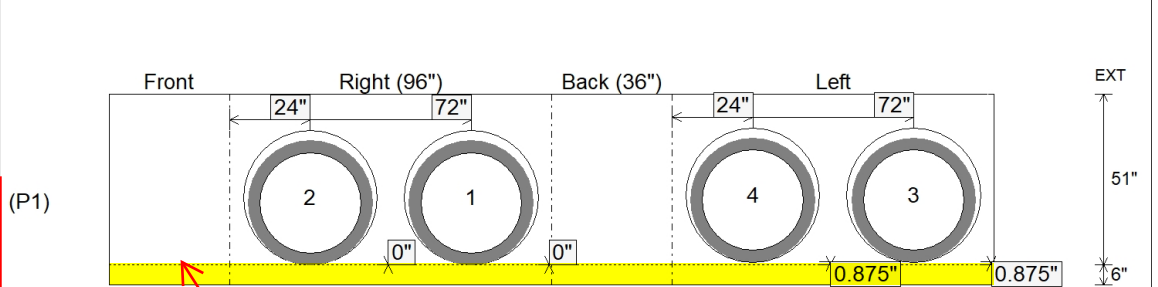


**1ST POR (FLOOR) = 2,610 LBS
 2N POUR (WALLS) = 4,864 LBS**



**1ST POUR (FLOOR)
 STUB #5 L BARS OUT TOP
 OF FLOOR FOR
 CONNECTING WALLS**

INSIDE WALL DIMENSIONS



**CONSEAL CS-231
 BETWEEN FLOOR & WALLS**

Coating (Int): Coating (Ext):	Seam Up: Flat Seam Dn: n/a	Wall Thickness: 6" Floor Height: 6"	Height (Int): 51" Height (Ext): 57"	Weight (Net): 7474 lb Volume (Net): 1.91cu.yd
----------------------------------	-------------------------------	--	--	--

Job Name: 25-2310 GOOSE CREEK SUBDIVISION
 Job Location: Hartsville, TN
 Contractor: Hayes Pipe Supply

Plant: Beaver Dam
 2/4/2026 12:36:14 PM

Tech: C.Russ
 PC: A.Chambers



Structure ID: CB-2

P1A BX36960606VF

BOX BASE 6inW, 6inF, Variable Ht F/n

- P3) 28" x 28" - CASTING HEIGHT - 6"
- P2) 36" x 96" - BX FLAT LID 6inW w/(2) 28"x28" HOLES F/F - 6"
- P1) 36" x 96" - BOX BASE 6inW, 6inF, Variable Ht F/n - 51"
- 1) 36" x 96" - Conseal CS-102 1.00"
- 1) 28" x 28" - Conseal CS-102 1.00"
- 4) Hole - 40

0 lb
 1425 lb
 7474 lb
 0 lb
 0 lb
 0 lb

 Structure Total: 8899 lb

- Structure Notes:**
1. PER ASTM C913 SPECIFICATIONS.
 2. CONCRETE = 4,000 PSI AT 28 DAYS.
 3. NO STEPS & NO INVERT CHANNEL.
 4. CASTING BY OTHERS

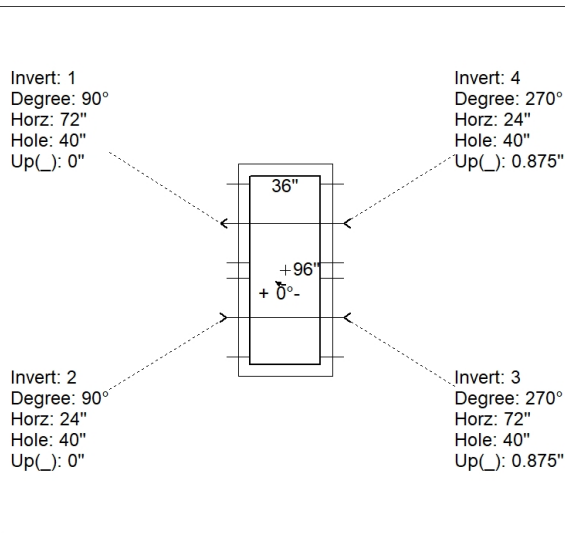
REINFORCING PER ASTM A615 (GRADE 60).
 - TOP SLAB (As .62) #5 BARS AT 6" C.C.E.W.
 - WALLS (As .12) #5 BARS AT 12" C.C.E.W.
 - FLOOR (As .12) #5 BARS AT 12" C.C.E.W.

Rim: 477.92' Rim to Invert: 4.99' Slack: 0.38" Sump: 3.5" Step Position:

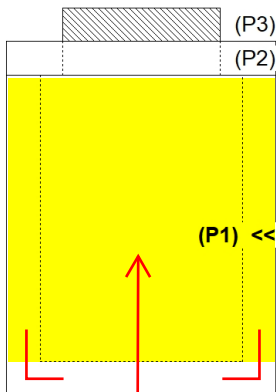
Position	Elev	Angle	Ext. (cw)	Pipe	Pipe OD	Connector	Hole	Horz Size	Up ()	Offset
Invert 1	472.93'	90°	78"	30" RCP B WALL	37"	Hole 40	40"	40"	0"	24"
Invert 2	472.93'	90°	30"	30" RCP B WALL	37"	Hole 40	40"	40"	0"	-24"
Invert 3	473'	270°	78"	30" RCP B WALL	37"	Hole 40	40"	40"	0.875"	24"
Invert 4	473'	270°	30"	30" RCP B WALL	37"	Hole 40	40"	40"	0.875"	-24"
Invert 5										
Invert 6										
Invert 7										
Invert 8										

RIGHT-SIDE UP VIEW (int. dimensions)

UPSIDE-DOWN VIEW (int. dimenions)

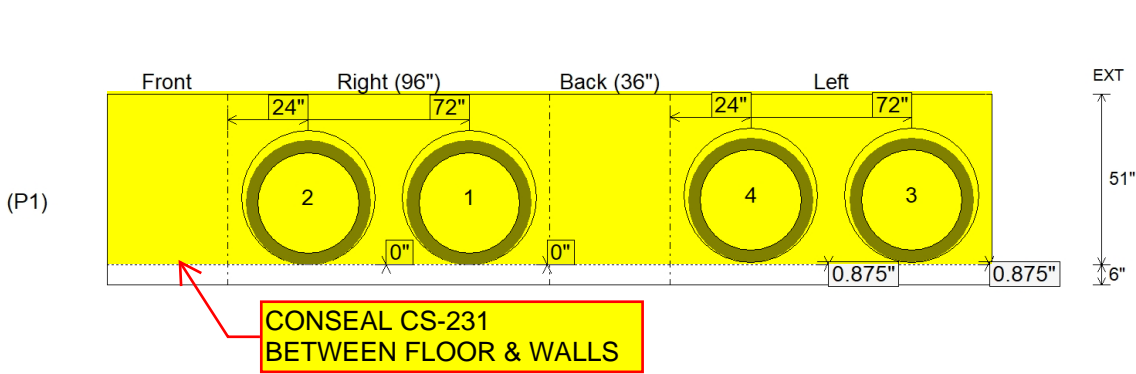


**1ST POR (FLOOR) = 2,610 LBS
 2N POUR (WALLS) = 4,864 LBS**



2ND POUR (WALLS)

INSIDE WALL DIMENSIONS



Coating (Int):
 Coating (Ext):

Seam Up: Flat
 Seam Dn: n/a

Wall Thickness: 6"
 Floor Height: 6"

Height (Int): 51"
 Height (Ext): 57"

Weight (Net): 7474 lb
 Volume (Net): 1.91cu.yd

Job Name: 25-2310 GOOSE CREEK SUBDIVISION
 Job Location: Hartsville, TN
 Contractor: Hayes Pipe Supply

Plant: Beaver Dam
 2/4/2026 12:37:02 PM

Tech: C.Russ
 PC: A.Chambers



Structure ID: CB-2

P2 BX036096-06LD06S

BX FLAT LID 6inW w/(2) 28"x28" HOLES F/F

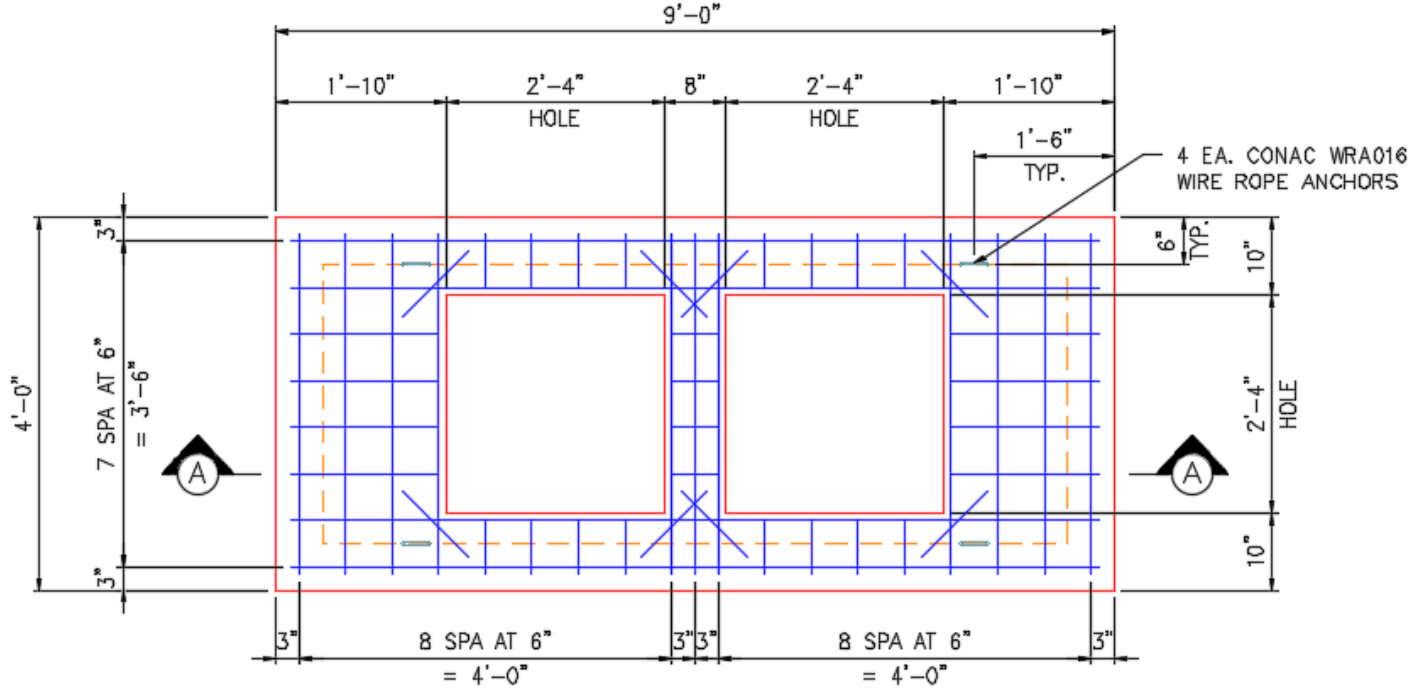
- P3) 28" x 28" - CASTING HEIGHT - 6"
- P2) 36" x 96" - BX FLAT LID 6inW w/(2) 28"x28" HOLES F/F - 6"
- P1) 36" x 96" - BOX BASE 6inW, 6inF, Variable Ht F/n - 51"
- 1) 36" x 96" - Conseal CS-102 1.00"
- 1) 28" x 28" - Conseal CS-102 1.00"
- 4) Hole - 40

0 lb
 1425 lb
 7474 lb
 0 lb
 0 lb
 0 lb
 0 lb

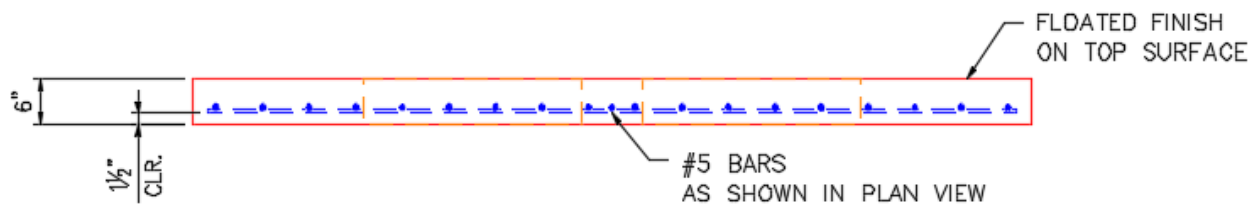
Structure Total: 8899 lb

Structure Notes:
 1. PER ASTM C913 SPECIFICATIONS.
 2. CONCRETE = 4,000 PSI AT 28 DAYS.
 3. NO STEPS & NO INVERT CHANNEL.
 4. CASTING BY OTHERS

REINFORCING PER ASTM A615 (GRADE 60).
 - TOP SLAB (As .62) #5 BARS AT 6" C.C.E.W.
 - WALLS (As .12) #5 BARS AT 12" C.C.E.W.
 - FLOOR (As .12) #5 BARS AT 12" C.C.E.W.



PLAN VIEW



SECTION A-A

Coating (Int): Coating (Ext):	Seam Up: Flat Seam Dn: Flat	Wall Thickness: 6"	Height (Ext): 6"	Weight (Net): 1425 lb Volume (Net): 0.36cu.yd
----------------------------------	--------------------------------	--------------------	------------------	--

Job Name: 25-2310 GOOSE CREEK SUBDIVISION
 Job Location: Hartsville, TN
 Contractor: Hayes Pipe Supply

Plant: Beaver Dam

Tech: C.Russ

2/4/2026 12:36:15 PM

PC: A.Chambers



Structure ID: CB-3

P1 BX28280606VH

BOX BASE 6inW, 6inF, Variable Ht F/n

P2) 28" x 28" - CASTING HEIGHT - 6"
 P1) 28" x 28" - BOX BASE 6inW, 6inF, Variable Ht F/n - 45"
 1) 28" x 28" - Conseal CS-102 1.00"
 2) Hole - 26"

0 lb
 3352 lb
 0 lb
 0 lb

 Structure Total: 3352 lb

Structure Notes:
 1. PER ASTM C913 SPECIFICATIONS.
 2. CONCRETE = 4,000 PSI AT 28 DAYS.
 3. NO STEPS & NO INVERT CHANNEL.
 4. CASTING BY OTHERS.

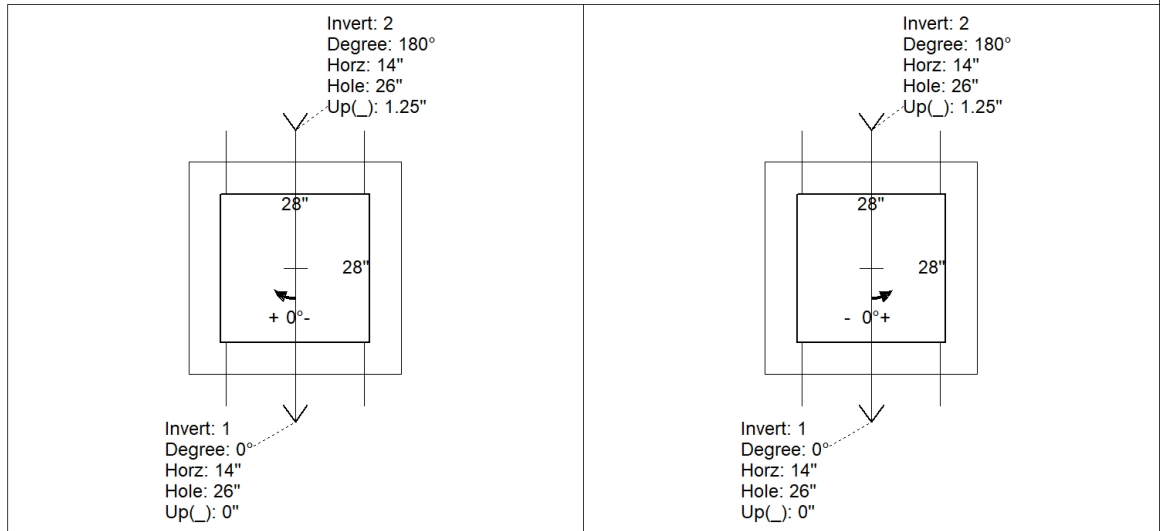
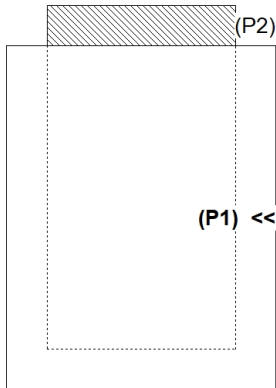
REINFORCING PER ASTM A615 (GRADE 60).
 - WALLS (As .31) #5 BARS AT 12" C.C.E.W.
 - FLOOR (As .31) #5 BARS AT 12" C.C.E.W.

Rim: 503.64' Rim to Invert: 4.06' Slack: 0.22" Sump: 2.5" Step Position: 90°

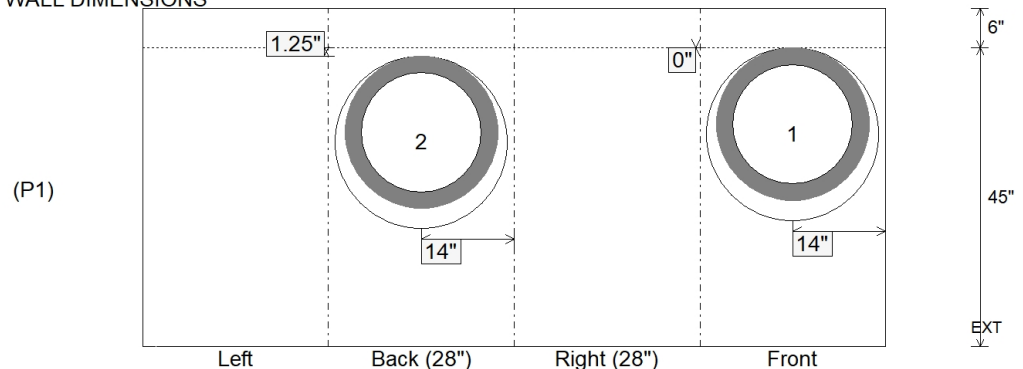
Position	Elev	Angle	Ext. (cw)	Pipe	Pipe OD	Connector	Hole	Horz Size	Up ()	Offset
Invert 1	499.58'	0°	20"	18" RCP B WALL	23"	Hole 26	26"	26"	0"	0"
Invert 2	499.68'	180°	20"	18" RCP B WALL	23"	Hole 26	26"	26"	1.25"	0"
Invert 3										
Invert 4										
Invert 5										
Invert 6										
Invert 7										
Invert 8										

RIGHT-SIDE UP VIEW (int. dimensions)

UPSIDE-DOWN VIEW (int. dimensions)



INSIDE WALL DIMENSIONS



Coating (Int):
 Coating (Ext):

Seam Up: Flat
 Seam Dn: n/a

Wall Thickness: 6"
 Floor Height: 6"

Height (Int): 45"
 Height (Ext): 51"

Weight (Net): 3352 lb
 Volume (Net): 0.86cu.yd

Job Name: 25-2310 GOOSE CREEK SUBDIVISION
 Job Location: Hartsville, TN
 Contractor: Hayes Pipe Supply

Plant: Beaver Dam

Tech: C.Russ

2/4/2026 12:36:16 PM

PC: A.Chambers



Structure ID: CB-4

P1 BX28280606VH

BOX BASE 6inW, 6inF, Variable Ht F/n

P2) 28" x 28" - CASTING HEIGHT - 6"
 P1) 28" x 28" - BOX BASE 6inW, 6inF, Variable Ht F/n - 41"
 1) 28" x 28" - Conseal CS-102 1.00"
 2) Hole - 26"

0 lb
 3078 lb
 0 lb
 0 lb

 Structure Total: 3078 lb

Structure Notes:

1. PER ASTM C913 SPECIFICATIONS.
2. CONCRETE = 4,000 PSI AT 28 DAYS.
3. NO STEPS & NO INVERT CHANNEL.
4. CASTING BY OTHERS

REINFORCING PER ASTM A615 (GRADE 60).

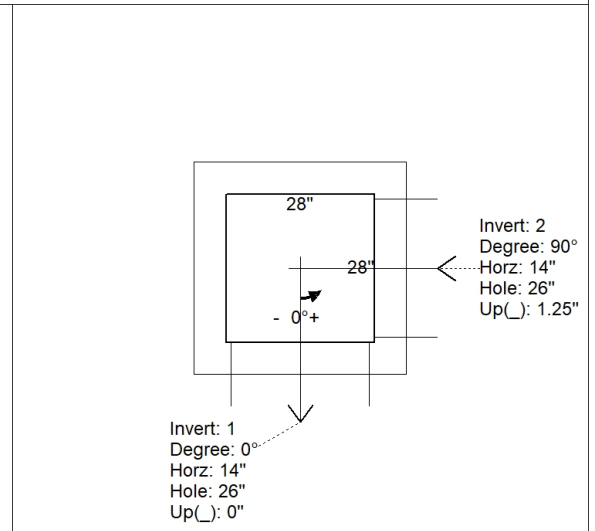
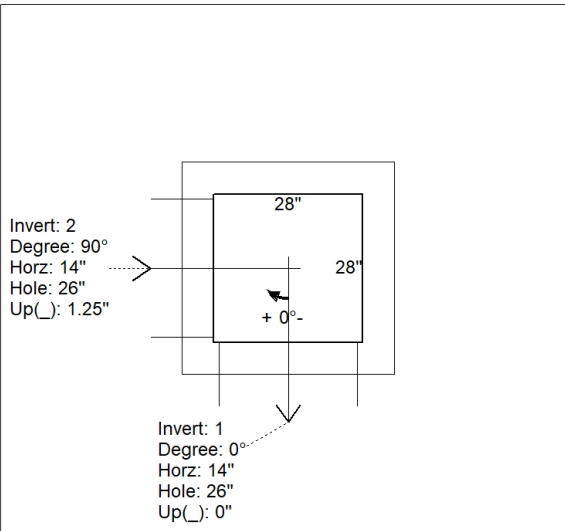
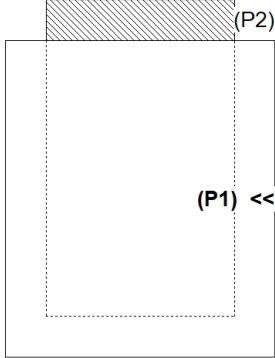
- WALLS (As .31) #5 BARS AT 12" C.C.E.W.
- FLOOR (As .31) #5 BARS AT 12" C.C.E.W.

Rim: 503.64' Rim to Invert: 3.74' Slack: 0.38" Sump: 2.5" Step Position: 270°

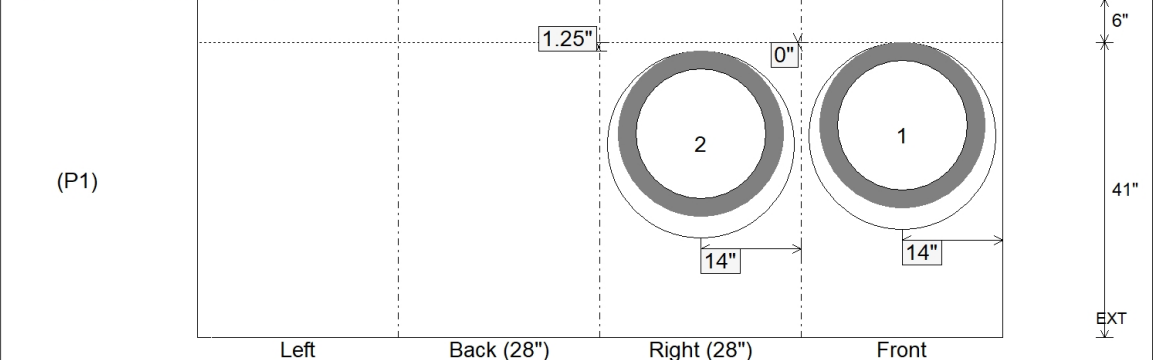
Position	Elev	Angle	Ext. (cw)	Pipe	Pipe OD	Connector	Hole	Horz Size	Up ()	Offset
Invert 1	499.9'	0°	20"	18" RCP B WALL	23"	Hole 26	26"	26"	0"	0"
Invert 2	500'	90°	20"	18" RCP B WALL	23"	Hole 26	26"	26"	1.25"	0"
Invert 3										
Invert 4										
Invert 5										
Invert 6										
Invert 7										
Invert 8										

RIGHT-SIDE UP VIEW (int. dimensions)

UPSIDE-DOWN VIEW (int. dimensions)



INSIDE WALL DIMENSIONS



Coating (Int):
 Coating (Ext):

Seam Up: Flat
 Seam Dn: n/a

Wall Thickness: 6"
 Floor Height: 6"

Height (Int): 41"
 Height (Ext): 47"

Weight (Net): 3078 lb
 Volume (Net): 0.79cu.yd

Job Name: 25-2310 GOOSE CREEK SUBDIVISION
 Job Location: Hartsville, TN
 Contractor: Hayes Pipe Supply

Plant: Beaver Dam

Tech: C.Russ

2/4/2026 12:36:16 PM

PC: A.Chambers



Structure ID: CB-5

P1 BX2828-06BA42

BOX BASE 6inW, 6inF F/n

- P2) 28" x 28" - CASTING HEIGHT - 6"
- P1) 28" x 28" - BOX BASE 6inW, 6inF F/n - 42"
- 1) 28" x 28" - Conseal CS-102 1.00"
- 2) Hole - 26"

0 lb
 3147 lb
 0 lb
 0 lb

 Structure Total: 3147 lb

Structure Notes:

1. PER ASTM C913 SPECIFICATIONS.
2. CONCRETE = 4,000 PSI AT 28 DAYS.
3. NO STEPS & NO INVERT CHANNEL.
4. CASTING BY OTHERS.

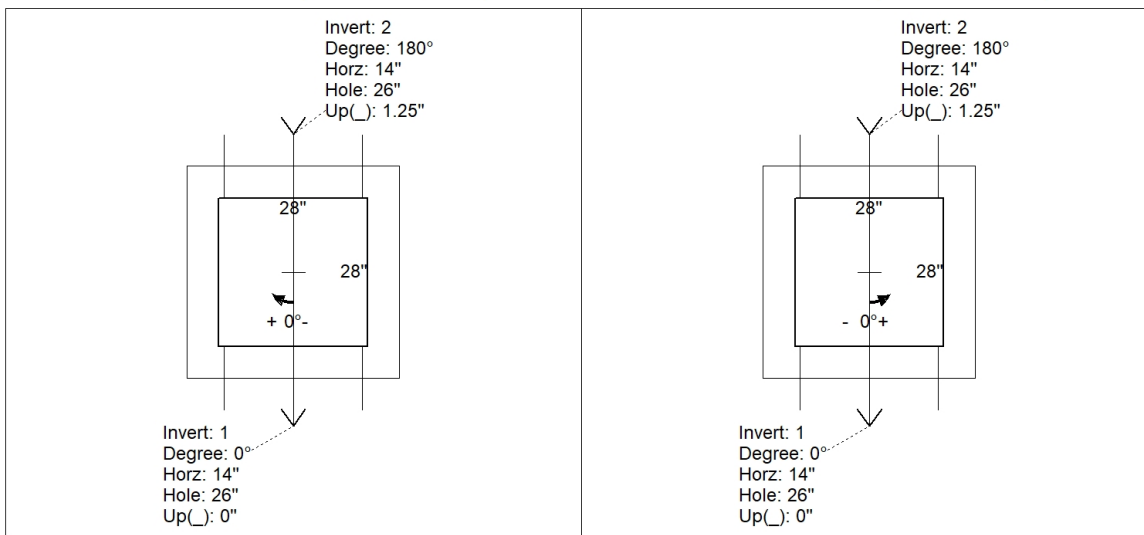
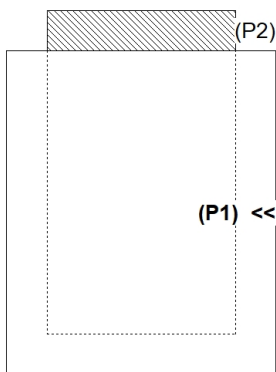
REINFORCING PER ASTM A615 (GRADE 60).
 - WALLS (As .31) #5 BARS AT 12" C.C.E.W.
 - FLOOR (As .31) #5 BARS AT 12" C.C.E.W.

Rim: 507.62' Rim to Invert: 3.82' Slack: 0.34" Sump: 2.5" Step Position: 90°

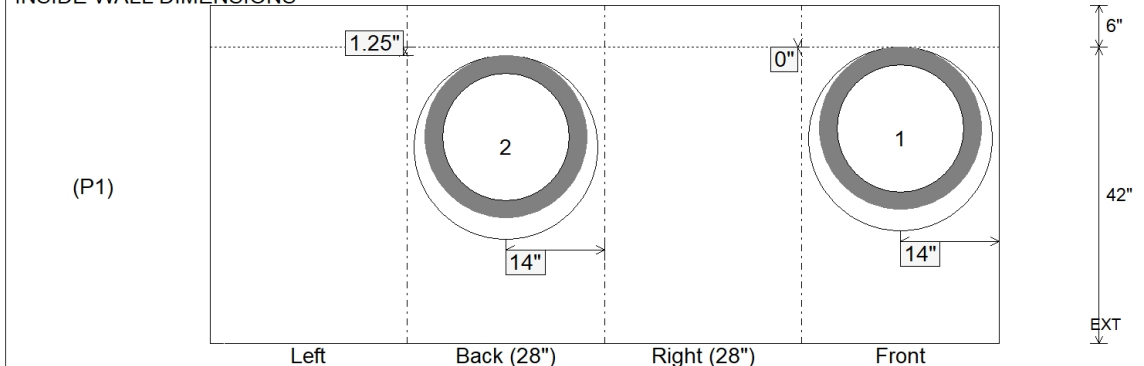
Position	Elev	Angle	Ext. (cw)	Pipe	Pipe OD	Connector	Hole	Horz Size	Up ()	Offset
Invert 1	503.8'	0°	20"	18" RCP B WALL	23"	Hole 26	26"	26"	0"	0"
Invert 2	503.9'	180°	20"	18" RCP B WALL	23"	Hole 26	26"	26"	1.25"	0"
Invert 3										
Invert 4										
Invert 5										
Invert 6										
Invert 7										
Invert 8										

RIGHT-SIDE UP VIEW (int. dimensions)

UPSIDE-DOWN VIEW (int. dimensions)



INSIDE WALL DIMENSIONS



Coating (Int):
 Coating (Ext):

Seam Up: Flat
 Seam Dn: n/a

Wall Thickness: 6"
 Floor Height: 6"

Height (Int): 42"
 Height (Ext): 48"

Weight (Net): 3147 lb
 Volume (Net): 0.8cu.yd

Job Name: 25-2310 GOOSE CREEK SUBDIVISION
 Job Location: Hartsville, TN
 Contractor: Hayes Pipe Supply

Plant: Beaver Dam
 2/4/2026 12:36:17 PM

Tech: C.Russ
 PC: A.Chambers



Structure ID: CB-6

P1 BX28280606VH

BOX BASE 6inW, 6inF, Variable Ht F/n

P2) 28" x 28" - CASTING HEIGHT - 6"
 P1) 28" x 28" - BOX BASE 6inW, 6inF, Variable Ht F/n - 38"
 1) 28" x 28" - Conseal CS-102 1.00"
 1) Hole - 26"

0 lb
 3140 lb
 0 lb
 0 lb

 Structure Total: 3140 lb

Structure Notes:
 1. PER ASTM C913 SPECIFICATIONS.
 2. CONCRETE = 4,000 PSI AT 28 DAYS.
 3. NO STEPS & NO INVERT CHANNEL.
 4. CASTING BY OTHERS

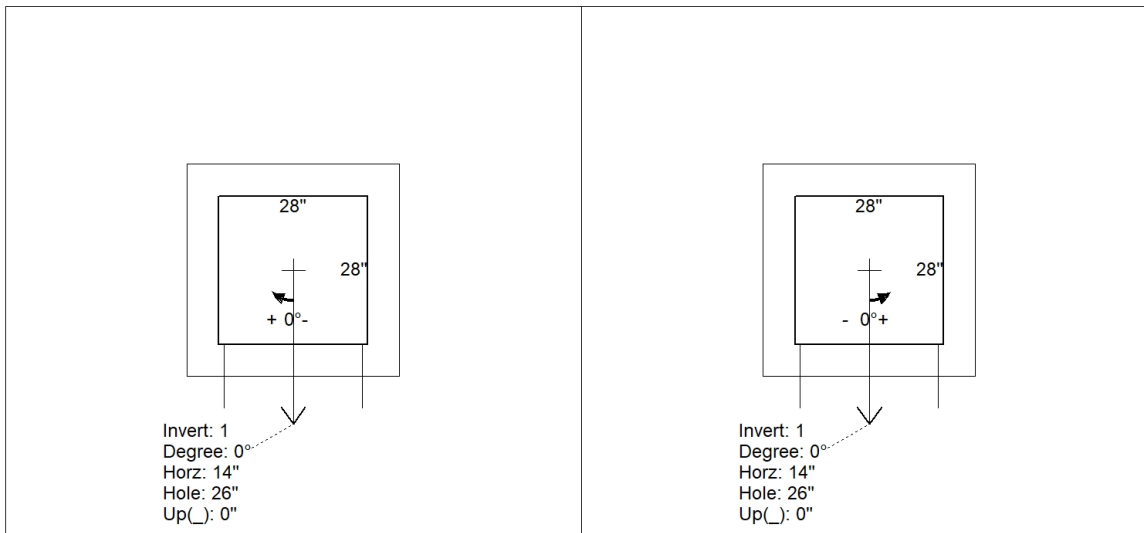
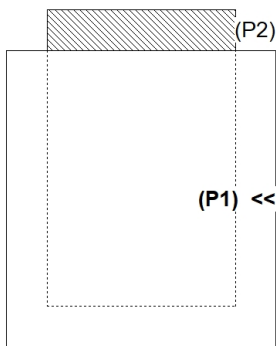
REINFORCING PER ASTM A615 (GRADE 60).
 - WALLS (As .31) #5 BARS AT 12" C.C.E.W.
 - FLOOR (As .31) #5 BARS AT 12" C.C.E.W.

Rim: 507.62' Rim to Invert: 3.5' Slack: 0.5" Sump: 2.5" Step Position: 90°

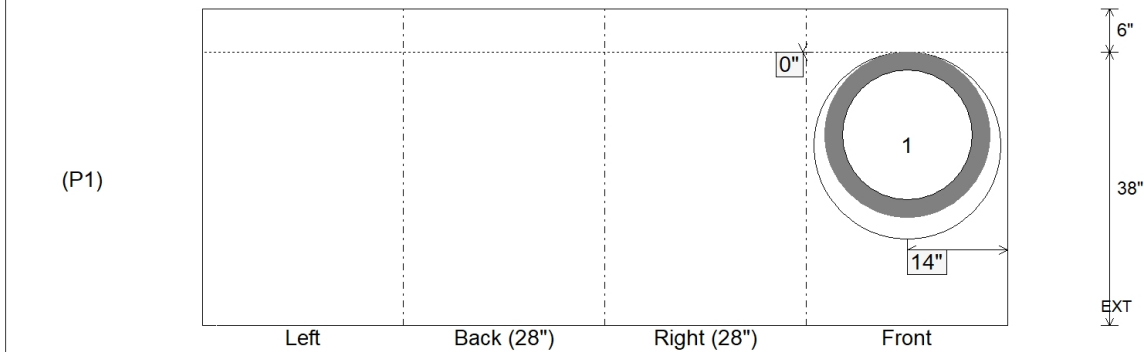
Position	Elev	Angle	Ext. (cw)	Pipe	Pipe OD	Connector	Hole	Horz Size	Up (_)	Offset
Invert 1	504.12'	0°	20"	18" RCP B WALL	23"	Hole 26	26"	26"	0"	0"
Invert 2										
Invert 3										
Invert 4										
Invert 5										
Invert 6										
Invert 7										
Invert 8										

RIGHT-SIDE UP VIEW (int. dimensions)

UPSIDE-DOWN VIEW (int. dimensions)



INSIDE WALL DIMENSIONS



Coating (Int):
 Coating (Ext):

Seam Up: Flat
 Seam Dn: n/a

Wall Thickness: 6"
 Floor Height: 6"

Height (Int): 38"
 Height (Ext): 44"

Weight (Net): 3140 lb
 Volume (Net): 0.8cu.yd

Job Name: 25-2310 GOOSE CREEK SUBDIVISION
 Job Location: Hartsville, TN
 Contractor: Hayes Pipe Supply

Plant: Beaver Dam
 2/4/2026 12:36:17 PM

Tech: C.Russ
 PC: A.Chambers



Structure ID: CB-7

P1 BX28280606VH

BOX BASE 6inW, 6inF, Variable Ht F/n

- P2) 28" x 28" - CASTING HEIGHT - 6"
- P1) 28" x 28" - BOX BASE 6inW, 6inF, Variable Ht F/n - 38"
- 1) 28" x 28" - Conseal CS-102 1.00"
- 1) Hole - 26"

0 lb
 3140 lb
 0 lb
 0 lb

 Structure Total: 3140 lb

- Structure Notes:
1. PER ASTM C913 SPECIFICATIONS.
 2. CONCRETE = 4,000 PSI AT 28 DAYS.
 3. NO STEPS & NO INVERT CHANNEL.
 4. CASTING BY OTHERS

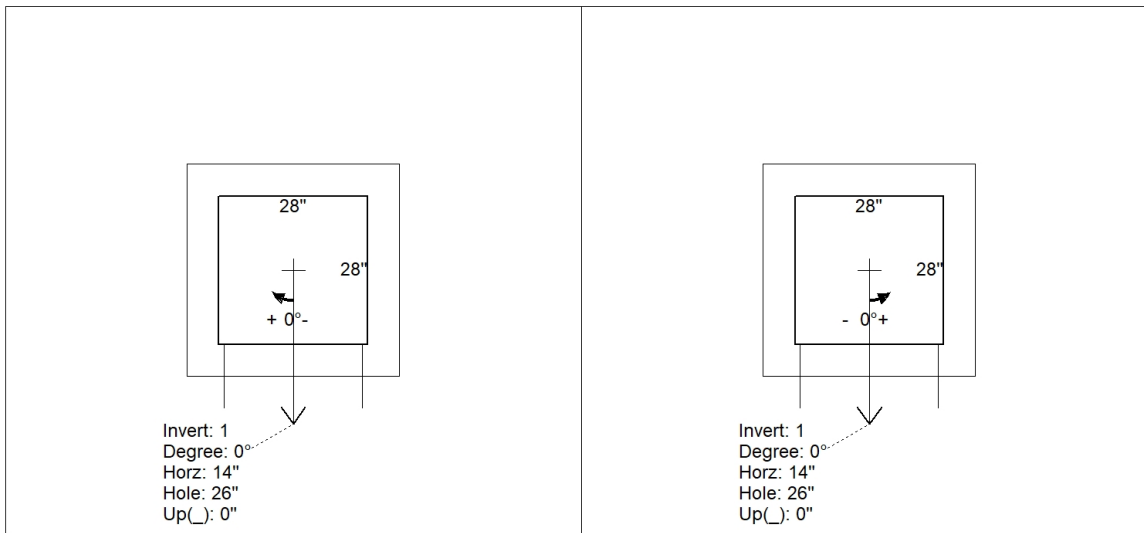
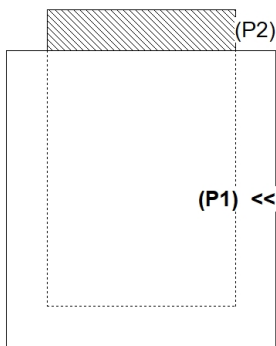
REINFORCING PER ASTM A615 (GRADE 60).
 - WALLS (As .31) #5 BARS AT 12" C.C.E.W.
 - FLOOR (As .31) #5 BARS AT 12" C.C.E.W.

Rim: 509.91' Rim to Invert: 3.5' Slack: 0.5" Sump: 2.5" Step Position: 90°

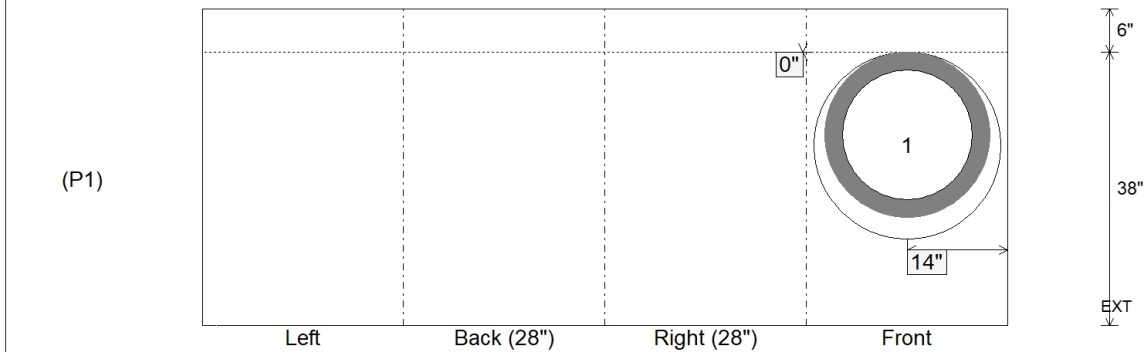
Position	Elev	Angle	Ext. (cw)	Pipe	Pipe OD	Connector	Hole	Horz Size	Up (_)	Offset
Invert 1	506.41'	0°	20"	18" RCP B WALL	23"	Hole 26	26"	26"	0"	0"
Invert 2										
Invert 3										
Invert 4										
Invert 5										
Invert 6										
Invert 7										
Invert 8										

RIGHT-SIDE UP VIEW (int. dimensions)

UPSIDE-DOWN VIEW (int. dimensions)



INSIDE WALL DIMENSIONS



Coating (Int):
 Coating (Ext):

Seam Up: Flat
 Seam Dn: n/a

Wall Thickness: 6"
 Floor Height: 6"

Height (Int): 38"
 Height (Ext): 44"

Weight (Net): 3140 lb
 Volume (Net): 0.8cu.yd

Job Name: 25-2310 GOOSE CREEK SUBDIVISION
 Job Location: Hartsville, TN
 Contractor: Hayes Pipe Supply

Plant: Beaver Dam
 2/4/2026 12:36:18 PM

Tech: C.Russ
 PC: A.Chambers



Structure ID: CB-8

P1 BX2828-06BA42

BOX BASE 6inW, 6inF F/n

- P2) 28" x 28" - CASTING HEIGHT - 6"
- P1) 28" x 28" - BOX BASE 6inW, 6inF F/n - 42"
- 1) 28" x 28" - Conseal CS-102 1.00"
- 2) Hole - 26"

0 lb
 3147 lb
 0 lb
 0 lb

 Structure Total: 3147 lb

- Structure Notes:**
1. PER ASTM C913 SPECIFICATIONS.
 2. CONCRETE = 4,000 PSI AT 28 DAYS.
 3. NO STEPS & NO INVERT CHANNEL.
 4. CASTING BY OTHERS

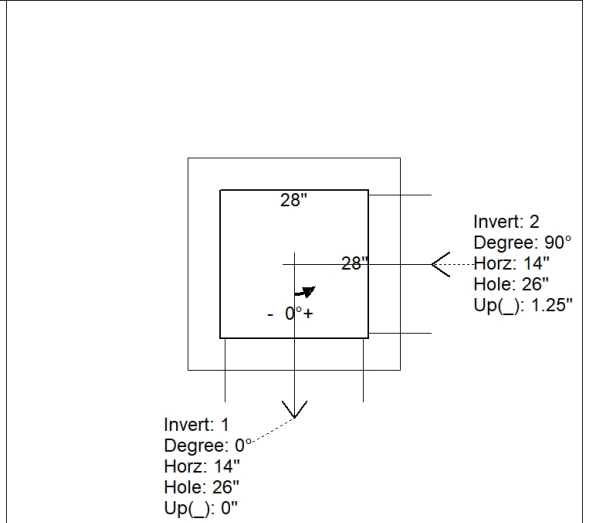
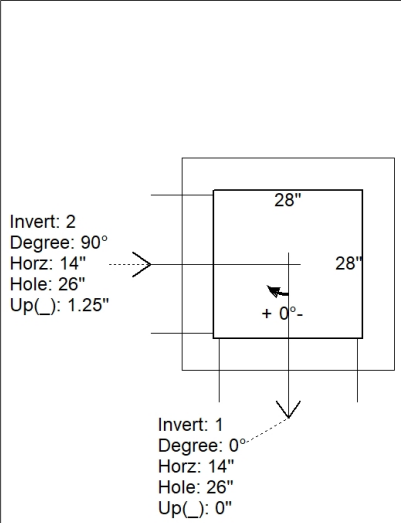
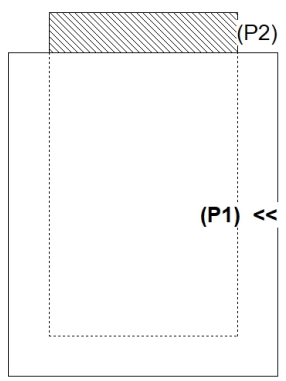
REINFORCING PER ASTM A615 (GRADE 60).
 - WALLS (As .31) #5 BARS AT 12" C.C.E.W.
 - FLOOR (As .31) #5 BARS AT 12" C.C.E.W.

Rim: 509.91' Rim to Invert: 3.82' Slack: 0.34" Sump: 2.5" Step Position: 270°

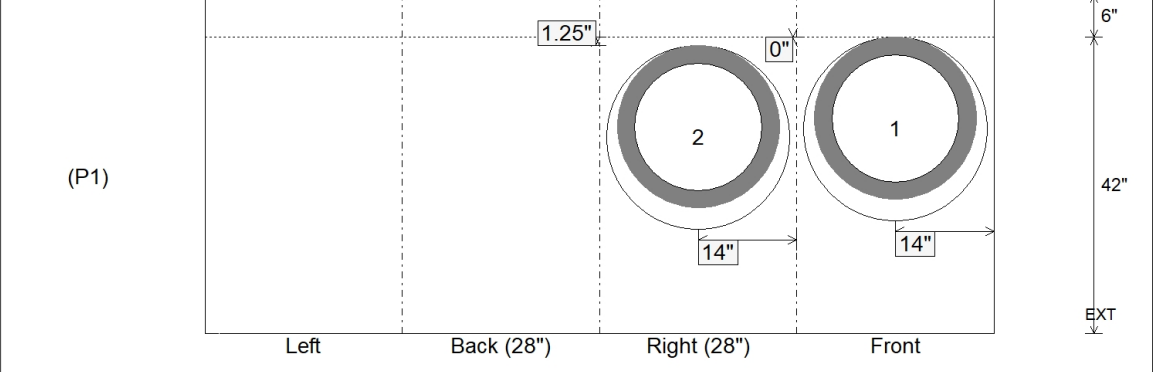
Position	Elev	Angle	Ext. (cw)	Pipe	Pipe OD	Connector	Hole	Horz Size	Up ()	Offset
Invert 1	506.09'	0°	20"	18" RCP B WALL	23"	Hole 26	26"	26"	0"	0"
Invert 2	506.19'	90°	20"	18" RCP B WALL	23"	Hole 26	26"	26"	1.25"	0"
Invert 3										
Invert 4										
Invert 5										
Invert 6										
Invert 7										
Invert 8										

RIGHT-SIDE UP VIEW (int. dimensions)

UPSIDE-DOWN VIEW (int. dimensions)



INSIDE WALL DIMENSIONS



Coating (Int): Coating (Ext):	Seam Up: Flat Seam Dn: n/a	Wall Thickness: 6" Floor Height: 6"	Height (Int): 42" Height (Ext): 48"	Weight (Net): 3147 lb Volume (Net): 0.8cu.yd
----------------------------------	-------------------------------	--	--	---

Job Name: 25-2310 GOOSE CREEK SUBDIVISION
 Job Location: Hartsville, TN
 Contractor: Hayes Pipe Supply

Plant: Beaver Dam

Tech: C.Russ

2/4/2026 12:36:18 PM

PC: A.Chambers



Structure ID: CB-9

P1 BX28280606VH

BOX BASE 6inW, 6inF, Variable Ht F/n

P2) 28" x 28" - CASTING HEIGHT - 6"
 P1) 28" x 28" - BOX BASE 6inW, 6inF, Variable Ht F/n - 38"
 1) 28" x 28" - Conseal CS-102 1.00"
 1) Hole - 26"

0 lb
 3140 lb
 0 lb
 0 lb

 Structure Total: 3140 lb

Structure Notes:
 1. PER ASTM C913 SPECIFICATIONS.
 2. CONCRETE = 4,000 PSI AT 28 DAYS.
 3. NO STEPS & NO INVERT CHANNEL.
 4. CASTING BY OTHERS

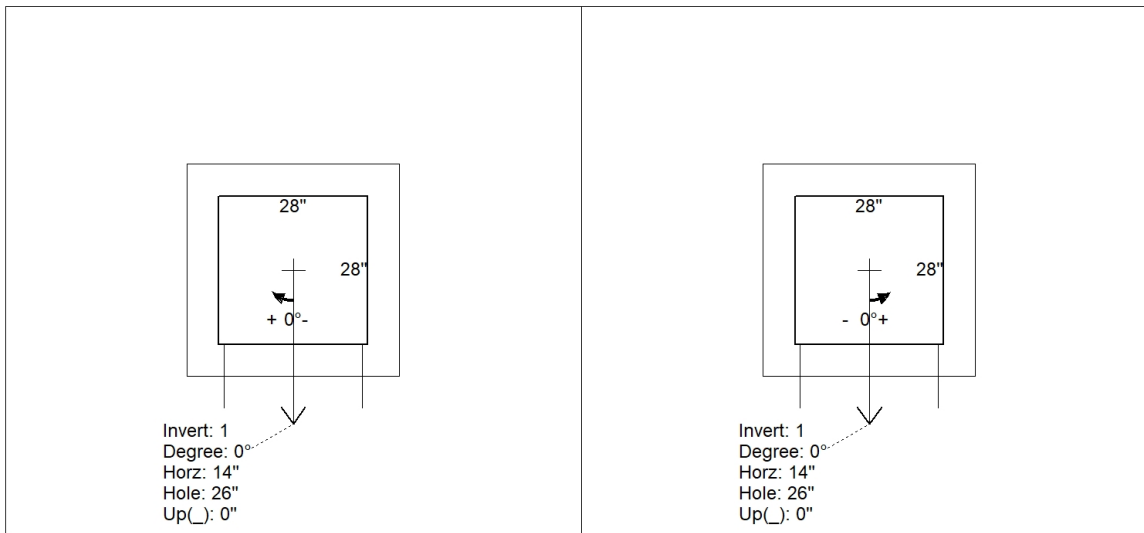
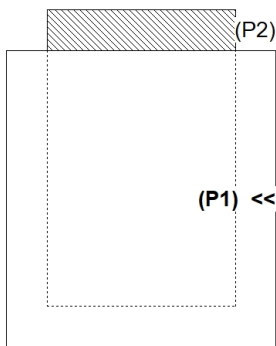
REINFORCING PER ASTM A615 (GRADE 60).
 - WALLS (As .31) #5 BARS AT 12" C.C.E.W.
 - FLOOR (As .31) #5 BARS AT 12" C.C.E.W.

Rim: 509.5' Rim to Invert: 3.5' Slack: 0.5" Sump: 2.5" Step Position: 90°

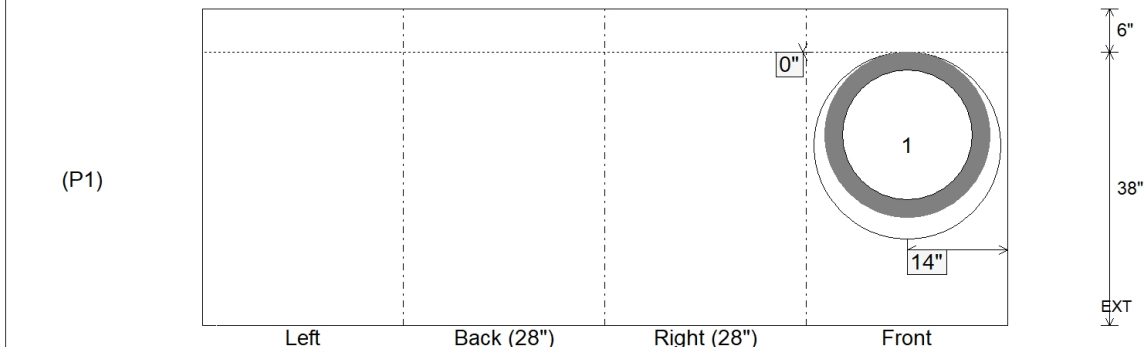
Position	Elev	Angle	Ext. (cw)	Pipe	Pipe OD	Connector	Hole	Horz Size	Up ()	Offset
Invert 1	506'	0°	20"	18" RCP B WALL	23"	Hole 26	26"	26"	0"	0"
Invert 2										
Invert 3										
Invert 4										
Invert 5										
Invert 6										
Invert 7										
Invert 8										

RIGHT-SIDE UP VIEW (int. dimensions)

UPSIDE-DOWN VIEW (int. dimensions)



INSIDE WALL DIMENSIONS



Coating (Int):
 Coating (Ext):

Seam Up: Flat
 Seam Dn: n/a

Wall Thickness: 6"
 Floor Height: 6"

Height (Int): 38"
 Height (Ext): 44"

Weight (Net): 3140 lb
 Volume (Net): 0.8cu.yd

Job Name: 25-2310 GOOSE CREEK SUBDIVISION
 Job Location: Hartsville, TN
 Contractor: Hayes Pipe Supply

Plant: Beaver Dam

Tech: C.Russ

2/4/2026 12:36:18 PM

PC: A.Chambers



Structure ID: JB-1

P1 MH048BA36

MH BASE T/n

- P3) 24" - CASTING HEIGHT - 6"
- P2) 48" - ECC CONE w/ 24" HOLE F/G - 30"
- P1) 48" - MH BASE T/n - 36"
- 1) 48" - SGL 1"x14.5' Butyl (2x)
- 3) Hole - 26"
- 6) MH Step ML-10-TDS-NCR - 10"

0 lb
 2050 lb
 3146 lb
 0 lb
 0 lb
 0 lb
 0 lb

 Structure Total: 5196 lb

Structure Notes:

1. PER ASTM C478 SPECIFICATIONS.
2. CONCRETE = 4,000 PSI AT 28 DAYS.
3. NO INVERT CHANNEL.
4. CASTING BY OTHERS

REINFORCING PER ASTM A615 (GRADE 60).

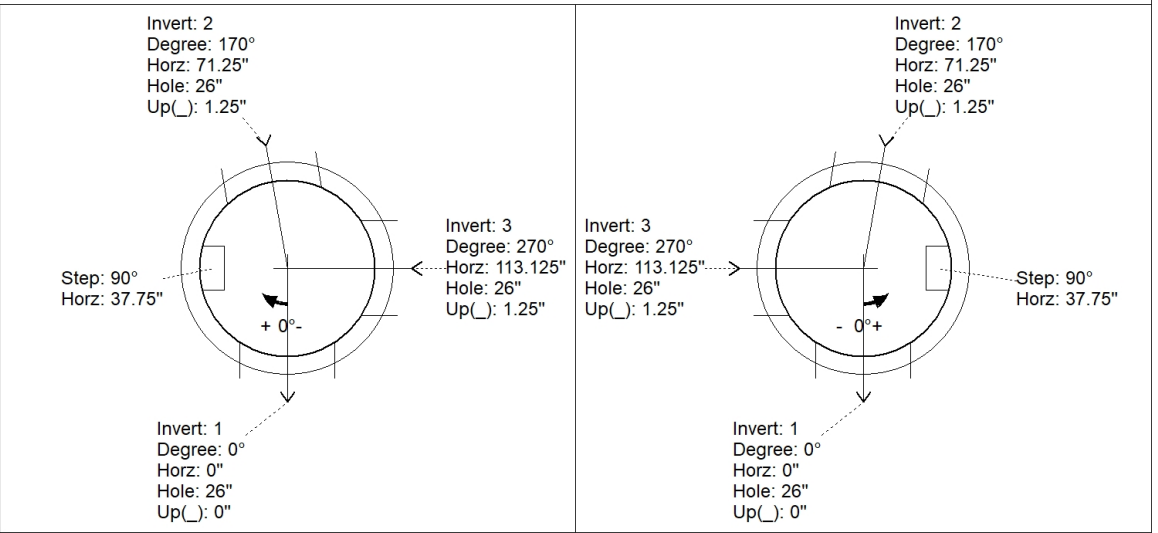
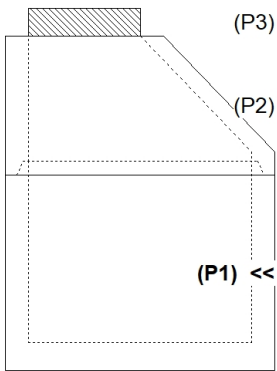
- CONE (As .12).
- RISER/WALLS (As .12)
- FLOOR (As .31) #5 BARS AT 12" C.C.E.W.

Rim: 505.25' Rim to Invert: 5.97' Slack: 2.14" Sump: 2.5" Step Position: 90°

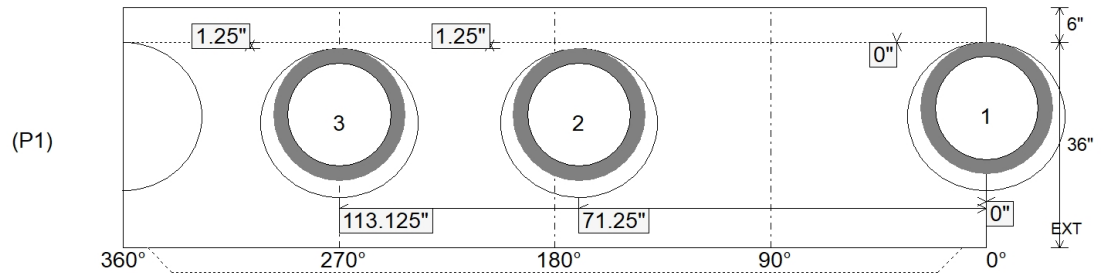
Position	Elev	Angle	Ext. (cw)	Pipe	Pipe OD	Connector	Hole	Horz Size	Up ()	Offset
Invert 1	499.28'	0°	0"	18" RCP B WALL	23"	Hole 26	26"	27.476"	0"	0"
Invert 2	499.38'	170°	86"	18" RCP B WALL	23"	Hole 26	26"	27.476"	1.25"	0"
Invert 3	499.38'	270°	136.625"	18" RCP B WALL	23"	Hole 26	26"	27.476"	1.25"	0"
Invert 4										
Invert 5										
Invert 6										
Invert 7										
Invert 8										

RIGHT-SIDE UP VIEW (int. dimensions)

UPSIDE-DOWN VIEW (int. dimensions)



INSIDE WALL DIMENSIONS



Coating (Int):
 Coating (Ext):

Seam Up: Tongue
 Seam Dn: n/a

Wall Thickness: 5"
 Floor Height: 6"

Height (Int): 36"
 Height (Ext): 42"

Weight (Net): 3146 lb
 Volume (Net): 0.8cu.yd

Job Name: 25-2310 GOOSE CREEK SUBDIVISION
 Job Location: Hartsville, TN
 Contractor: Hayes Pipe Supply

Plant: Beaver Dam
 2/4/2026 12:37:03 PM

Tech: C.Russ
 PC: A.Chambers



Structure ID: JB-1

P2 MH048CN30

ECC CONE w/ 24" HOLE F/G

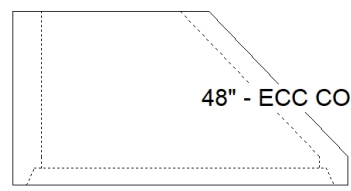
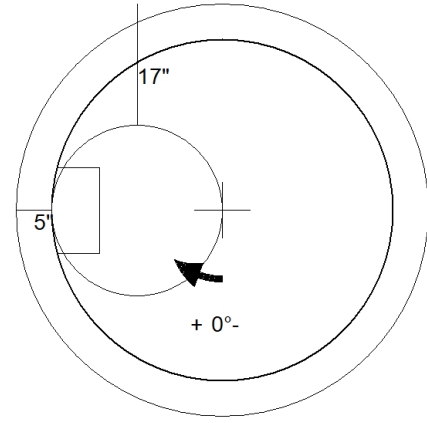
- P3) 24" - CASTING HEIGHT - 6"
- P2) 48" - ECC CONE w/ 24" HOLE F/G - 30"
- P1) 48" - MH BASE T/n - 36"
- 1) 48" - SGL 1"x14.5' Butyl (2x)
- 3) Hole - 26
- 6) MH Step ML-10-TDS-NCR - 10"

0 lb
 2050 lb
 3146 lb
 0 lb
 0 lb
 0 lb

 Structure Total: 5196 lb

Structure Notes:
 1. PER ASTM C478 SPECIFICATIONS.
 2. CONCRETE = 4,000 PSI AT 28 DAYS.
 3. NO INVERT CHANNEL.
 4. CASTING BY OTHERS

REINFORCING PER ASTM A615 (GRADE 60).
 - CONE (As .12).
 - RISER/WALLS (As .12)
 - FLOOR (As .31) #5 BARS AT 12" C.C.E.W.



48" - ECC CONE w/ 24" HOLE F/G - 30" - (P2)

Coating (Int): Coating (Ext):	Seam Up: Flat Seam Dn: Groove	Wall Thickness: 5"	Height (Ext): 30"	Weight (Net): 2050 lb Volume (Net): 0.41cu.yd
----------------------------------	----------------------------------	--------------------	-------------------	--

Job Name: 25-2310 GOOSE CREEK SUBDIVISION
 Job Location: Hartsville, TN
 Contractor: Hayes Pipe Supply

Plant: Beaver Dam

Tech: C.Russ

2/4/2026 12:36:19 PM

PC: A.Chambers



Structure ID: JB-2

P1 MH048BA36

MH BASE T/n

- P3) 24" - CASTING HEIGHT - 6"
- P2) 48" - MH FLAT TOP w/ 24" ECC Hole F/G - 12"
- P1) 48" - MH BASE T/n - 36"
- 1) 48" - SGL 1"x14.5' Butyl (2x)
- 2) Hole - 26"
- 3) MH Step ML-10-TDS-NCR - 10"

0 lb
 1561 lb
 3379 lb
 0 lb
 0 lb
 0 lb
 0 lb

Structure Total: 4940 lb

Structure Notes:

1. PER ASTM C478 SPECIFICATIONS.
2. CONCRETE = 4,000 PSI AT 28 DAYS.
3. CASTING BY OTHERS.

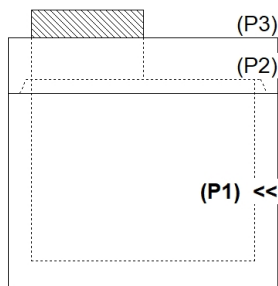
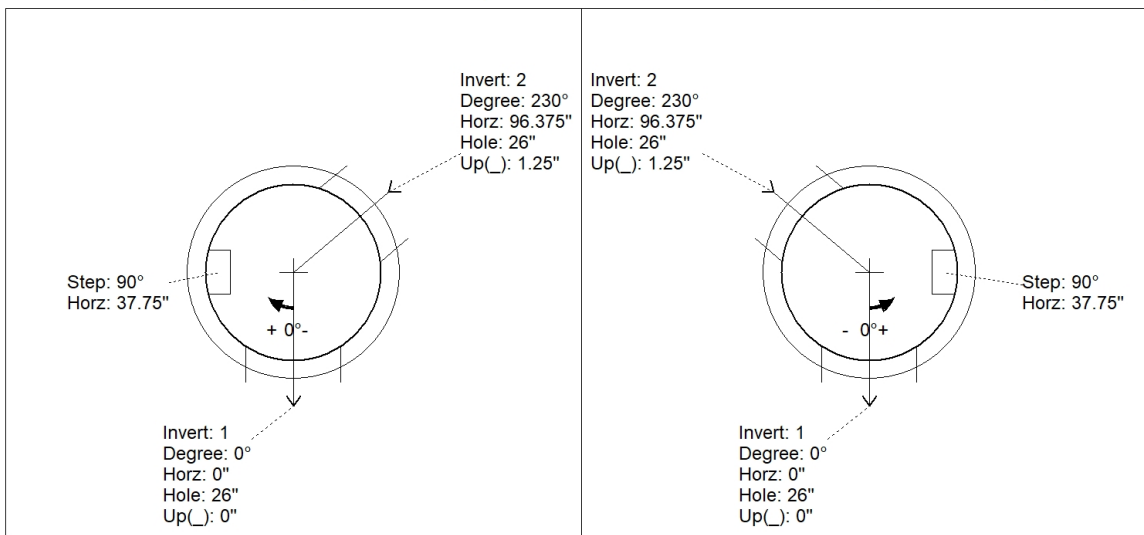
REINFORCING PER ASTM A615 (GRADE 60).
 - TOP SLAB (As .62) #5 BARS AT 6" C.C.E.W..
 - RISER/WALLS (As .12)
 - FLOOR (As .31) #5 BARS AT 12" C.C.E.W.

Rim: 510' Rim to Invert: 4.36' Slack: 0.82" Sump: 2.5" Step Position: 90°

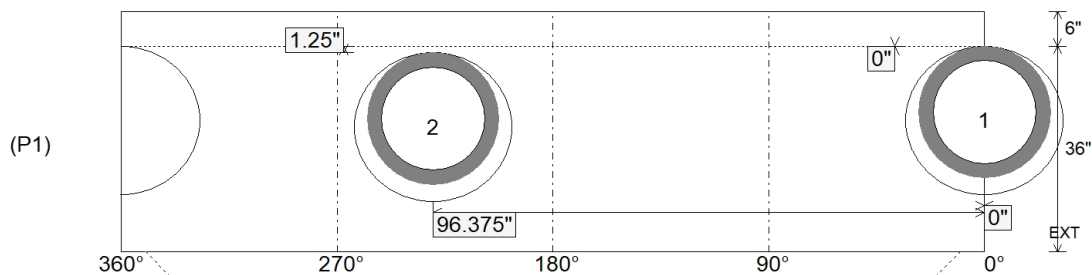
Position	Elev	Angle	Ext. (cw)	Pipe	Pipe OD	Connector	Hole	Horz Size	Up ()	Offset
Invert 1	505.64'	0°	0"	18" RCP B WALL	23"	Hole 26	26"	27.476"	0"	0"
Invert 2	505.74'	230°	116.375"	18" RCP B WALL	23"	Hole 26	26"	27.476"	1.25"	0"
Invert 3										
Invert 4										
Invert 5										
Invert 6										
Invert 7										
Invert 8										

RIGHT-SIDE UP VIEW (int. dimensions)

UPSIDE-DOWN VIEW (int. dimenions)



INSIDE WALL DIMENSIONS



Coating (Int):
 Coating (Ext):

Seam Up: Tongue
 Seam Dn: n/a

Wall Thickness: 5"
 Floor Height: 6"

Height (Int): 36"
 Height (Ext): 42"

Weight (Net): 3379 lb
 Volume (Net): 0.86cu.yd

Job Name: 25-2310 GOOSE CREEK SUBDIVISION
 Job Location: Hartsville, TN
 Contractor: Hayes Pipe Supply

Plant: Beaver Dam
 2/4/2026 12:37:03 PM

Tech: C.Russ
 PC: A.Chambers



Structure ID: JB-2

P2 MH048LD12ECC

MH FLAT TOP w/ 24" ECC Hole F/G

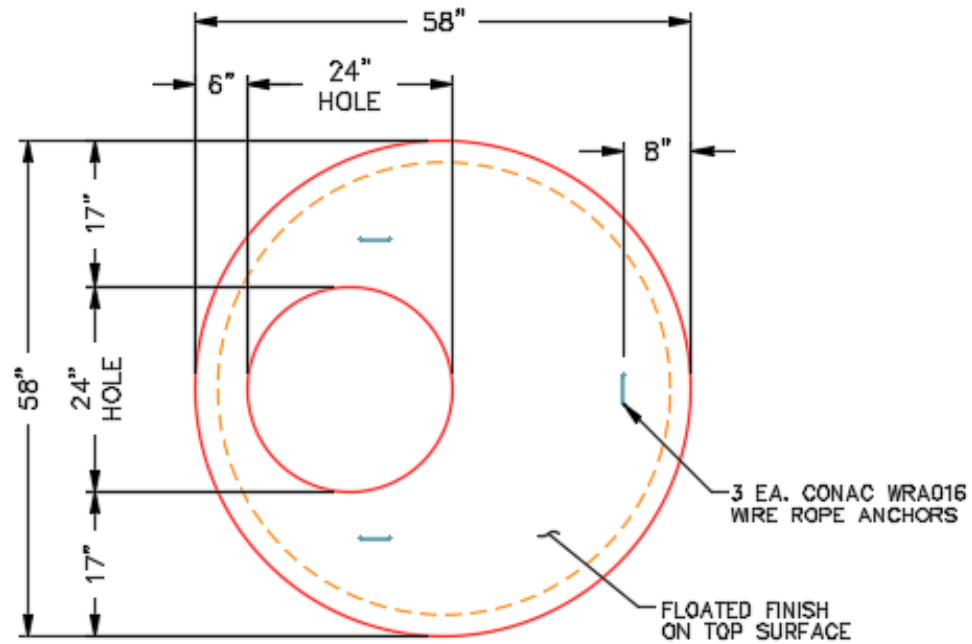
- P3) 24" - CASTING HEIGHT - 6"
- P2) 48" - MH FLAT TOP w/ 24" ECC Hole F/G - 12"
- P1) 48" - MH BASE T/n - 36"
- 1) 48" - SGL 1"x14.5' Butyl (2x)
- 2) Hole - 26
- 3) MH Step ML-10-TDS-NCR - 10"

0 lb
 1561 lb
 3379 lb
 0 lb
 0 lb
 0 lb
 0 lb

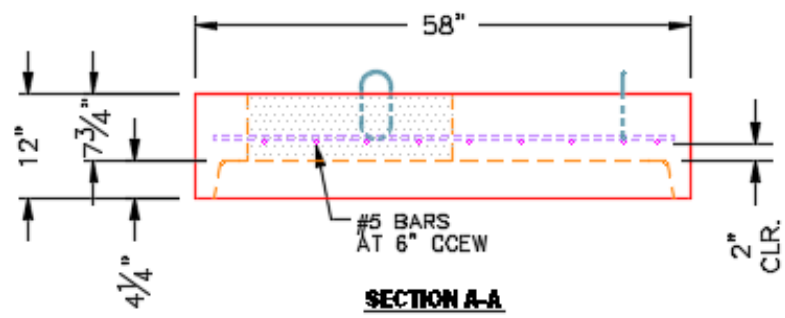
 Structure Total: 4940 lb

Structure Notes:
 1. PER ASTM C478 SPECIFICATIONS.
 2. CONCRETE = 4,000 PSI AT 28 DAYS.
 3. CASTING BY OTHERS.

REINFORCING PER ASTM A615 (GRADE 60).
 - TOP SLAB (As .62) #5 BARS AT 6" C.C.E.W..
 - RISER/WALLS (As .12)
 - FLOOR (As .31) #5 BARS AT 12" C.C.E.W.



PLAN VIEW



SECTION A-A

Coating (Int): Coating (Ext):	Seam Up: Flat Seam Dn: Groove	Wall Thickness: 5"	Height (Ext): 12"	Weight (Net): 1561 lb Volume (Net): 0.42cu.yd
----------------------------------	----------------------------------	--------------------	-------------------	--

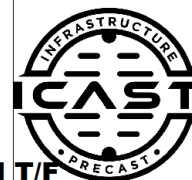
Job Name: 25-2310 GOOSE CREEK SUBDIVISION
 Job Location: Hartsville, TN
 Contractor: Hayes Pipe Supply

Plant: Beaver Dam

Tech: C.Russ

2/4/2026 12:36:19 PM

PC: A.Chambers



Structure ID: SSMH 1

P1 MH048DHVFCDA RED

MH DH RISER Custom Ht, w/ConBlock-CDA Red T/F

- P3) 24" - CASTING HEIGHT - 7.50"
- P2) 48" - ECC CONE w/ 24" HOLE, w/ConBlock-CDA Red F/G - 24"
- P1) 48" - MH DH RISER Custom Ht, w/ConBlock-CDA Red T/F - 48"
- 1) JOINT WRAP - 0.065"x6"x50' CONSEAL CS212
- 1) JOINT WRAP PRIMER - CONSEAL CS-75 (1 gal.)
- 1) ADMIXTURE CONBLOCK CDA RED
- 1) 48" - Conseal CS-102 1.00" (Double)
- 2) DOGHOUSE - 12"x16"
- 1) PSX - 12-08 NYLO
- 6) MH Step ML-10-TDS-NCR - 10"

0 lb
 1738 lb
 3160 lb
 0 lb
 0 lb
 0 lb
 0 lb
 0 lb
 0 lb
 8 lb
 0 lb

 Structure Total: 4906 lb

Structure Notes:

1. PER ASTM C478 SPECIFICATIONS.
2. CONCRETE = 4,000 PSI AT 28 DAYS.
3. ADMIXTURE = CONBLOCK-CDA RED.
4. CASTING BY OTHERS (JBS 1150 F/C).

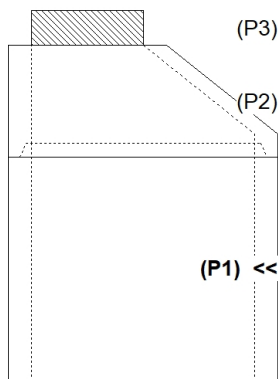
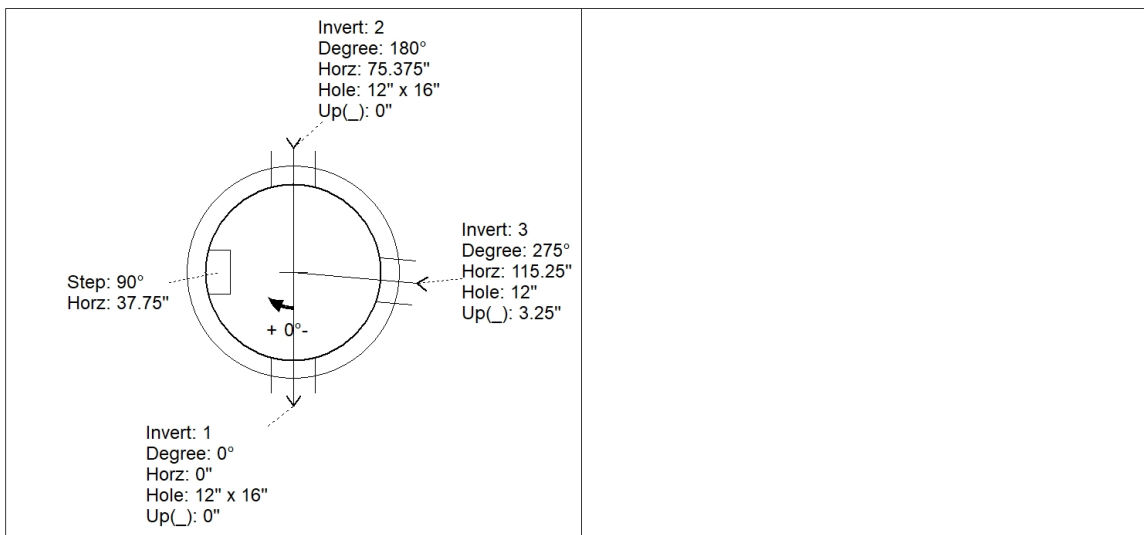
REINFORCING PER ASTM A615 (GRADE 60).
 - CONE (As .12)
 - RISER (As .12)

Rim: 470.5' Rim to Invert: 6.37' Slack: 0.94" Sump: 4" Step Position: 90°

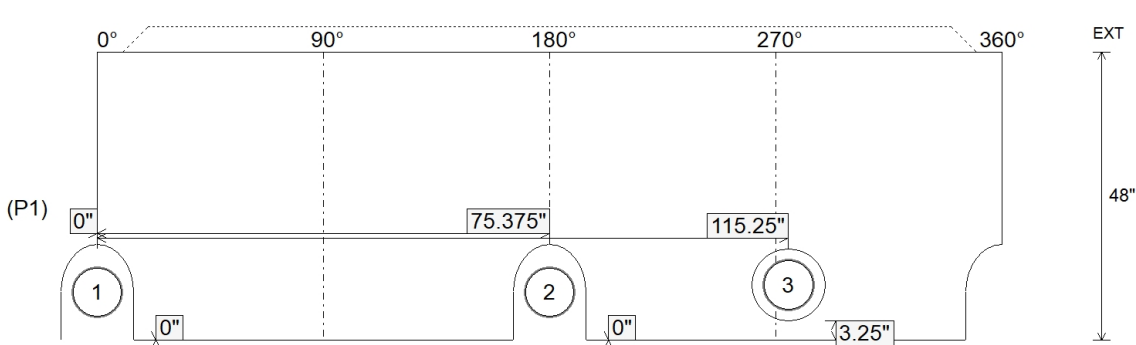
Position	Elev	Angle	Ext. (cw)	Pipe	Pipe OD	Connector	Hole	Horz Size	Up ()	Offset
Invert 1	464.13'	0°	0"	8" PVC SDR26	8.5"	DOGHOUSE 12"x16"	12" x 16"	12.129"	0"	0"
Invert 2	464.13'	180°	91.125"	8" PVC SDR26	8.5"	DOGHOUSE 12"x16"	12" x 16"	12.129"	0"	0"
Invert 3	464.23'	275°	139.25"	8" PVC SDR26	8.5"	PSX 12-08 NYLO	12"	12.129"	3.25"	0"
Invert 4										
Invert 5										
Invert 6										
Invert 7										
Invert 8										

RIGHT-SIDE UP VIEW (int. dimensions)

UPSIDE-DOWN VIEW (int. dimenions)



INSIDE WALL DIMENSIONS



Coating (Int):
 Coating (Ext):

Seam Up: Tongue
 Seam Dn: Flat

Wall Thickness: 5"
 Floor Height: 0"

Height (Int): 48"
 Height (Ext): 48"

Weight (Net): 3160 lb
 Volume (Net): 0.81cu.yd

Job Name: 25-2310 GOOSE CREEK SUBDIVISION
 Job Location: Hartsville, TN
 Contractor: Hayes Pipe Supply

Plant: Beaver Dam
 2/4/2026 12:37:03 PM

Tech: C.Russ
 PC: A.Chambers



Structure ID: SSMH 1

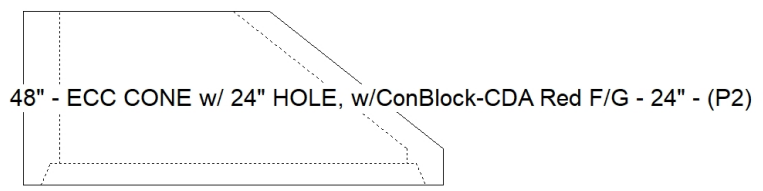
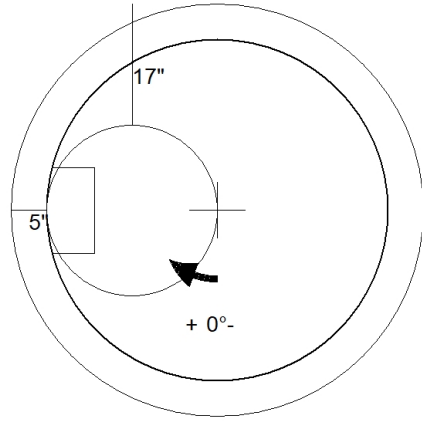
P2 MH048CN24CDARED

ECC CONE w/ 24" HOLE, w/ConBlock-CDA Red F/G

P3) 24" - CASTING HEIGHT - 7.50"	0 lb
P2) 48" - ECC CONE w/ 24" HOLE, w/ConBlock-CDA Red F/G - 24"	1738 lb
P1) 48" - MH DH RISER Custom Ht, w/ConBlock-CDA Red T/F - 48"	3160 lb
1) JOINT WRAP - 0.065"x6"x50' CONSEAL CS212	0 lb
1) JOINT WRAP PRIMER - CONSEAL CS-75 (1 gal.)	0 lb
1) ADMIXTURE CONBLOCK CDA RED	0 lb
1) 48" - Conseal CS-102 1.00" (Double)	0 lb
2) DOGHOUSE - 12"x16"	0 lb
1) PSX - 12-08 NYLO	8 lb
6) MH Step ML-10-TDS-NCR - 10"	0 lb
Structure Total:	4906 lb

Structure Notes:
 1. PER ASTM C478 SPECIFICATIONS.
 2. CONCRETE = 4,000 PSI AT 28 DAYS.
 3. ADMIXTURE = CONBLOCK-CDA RED.
 4. CASTING BY OTHERS (JBS 1150 F/C).

REINFORCING PER ASTM A615 (GRADE 60).
 - CONE (As .12)
 - RISER (As .12)



Coating (Int): Coating (Ext):	Seam Up: Flat Seam Dn: Groove	Wall Thickness: 5"	Height (Ext): 24"	Weight (Net): 1738 lb Volume (Net): 0.44cu.yd
----------------------------------	----------------------------------	--------------------	-------------------	--

Job Name: 25-2310 GOOSE CREEK SUBDIVISION
 Job Location: Hartsville, TN
 Contractor: Hayes Pipe Supply

Plant: Beaver Dam
 2/4/2026 12:36:19 PM

Tech: C.Russ
 PC: A.Chambers



Structure ID: SSMH 2

P1 MH048BA30CDARED

MH BASE w/ConBlock-CDA Red T/n

- P4) 24" - CASTING HEIGHT - 7.50" 0 lb
- P3) 48" - ECC CONE w/ 24" HOLE, w/ConBlock-CDA Red F/G - 30" 1961 lb
- P2) 48" - MH RISER w/ConBlock-CDA Red T/G - 36" 2515 lb
- P1) 48" - MH BASE w/ConBlock-CDA Red T/n - 30" 3330 lb
- 1) JOINT WRAP - 0.065"x6"x50' CONSEAL CS212 0 lb
- 1) JOINT WRAP PRIMER - CONSEAL CS-75 (1 gal.) 0 lb
- 1) ADMIXTURE CONBLOCK CDA RED 0 lb
- 1) 48" - MH INVERT CHANNEL w/ConBlock-CDA Red - FULL HEIGHT 1440 lb
- 2) 48" - Conseal CS-102 1.00" (Double) 0 lb
- 2) PSX - 12-08 NYLO 16 lb
- 8) MH Step ML-10-TDS-NCR - 10" 0 lb

Structure Total: 9263 lb

Structure Notes:
 1. PER ASTM C478 SPECIFICATIONS.
 2. CONCRETE = 4,000 PSI AT 28 DAYS.
 3. ADMIXTURE = CONBLOCK-CDA RED.
 4. CASTING BY OTHERS (JBS 1150 F/C).

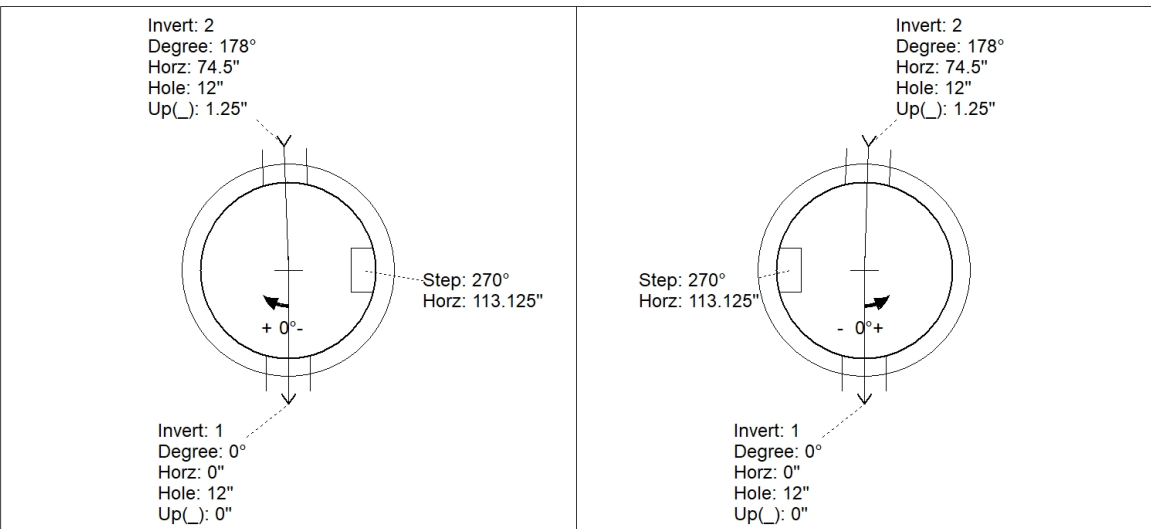
REINFORCING PER ASTM A615 (GRADE 60).
 - CONE (As .12)
 - RISER (As .12)
 - FLOOR (As .31) #5 BARS AT 12" C.C.E.W.

Rim: 476' Rim to Invert: 8.47' Slack: 0.14" Sump: 2" Step Position: 270°

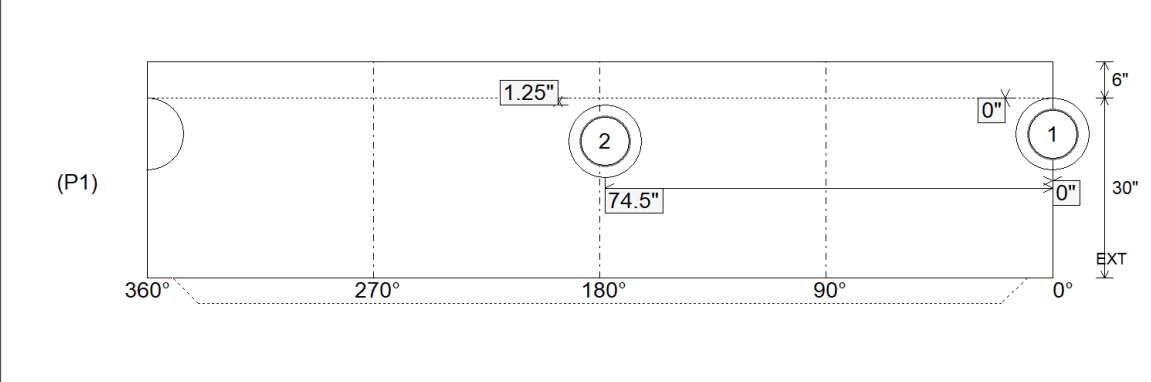
Position	Elev	Angle	Ext. (cw)	Pipe	Pipe OD	Connector	Hole	Horz Size	Up ()	Offset
Invert 1	467.53'	0°	0"	8" PVC SDR26	8.5"	PSX 12-08 NYLO	12"	12.129"	0"	0"
Invert 2	467.63'	178°	90.125"	8" PVC SDR26	8.5"	PSX 12-08 NYLO	12"	12.129"	1.25"	0"
Invert 3										
Invert 4										
Invert 5										
Invert 6										
Invert 7										
Invert 8										

RIGHT-SIDE UP VIEW (int. dimensions)

UPSIDE-DOWN VIEW (int. dimensions)



INSIDE WALL DIMENSIONS



Coating (Int): Coating (Ext):	Seam Up: Tongue Seam Dn: n/a	Wall Thickness: 5" Floor Height: 6"	Height (Int): 30" Height (Ext): 36"	Weight (Net): 3330 lb Volume (Net): 0.85cu.yd
----------------------------------	---------------------------------	--	--	--

Job Name: 25-2310 GOOSE CREEK SUBDIVISION
 Job Location: Hartsville, TN
 Contractor: Hayes Pipe Supply

Plant: Beaver Dam

Tech: C.Russ

2/4/2026 12:36:19 PM

PC: A.Chambers



Structure ID: SSMH 2

P1A MH048BA30CDARED

MH BASE w/ConBlock-CDA Red T/n

- P4) 24" - CASTING HEIGHT - 7.50"
- P3) 48" - ECC CONE w/ 24" HOLE, w/ConBlock-CDA Red F/G - 30"
- P2) 48" - MH RISER w/ConBlock-CDA Red T/G - 36"
- P1) 48" - MH BASE w/ConBlock-CDA Red T/n - 30"
- 1) JOINT WRAP - 0.065"x6"x50' CONSEAL CS212
- 1) JOINT WRAP PRIMER - CONSEAL CS-75 (1 gal.)
- 1) ADMIXTURE CONBLOCK CDA RED
- 1) 48" - MH INVERT CHANNEL w/ConBlock-CDA Red - FULL HEIGHT
- 2) 48" - Conseal CS-102 1.00" (Double)
- 2) PSX - 12-08 NYLO
- 8) MH Step ML-10-TDS-NCR - 10"

0 lb
 1961 lb
 2515 lb
 3330 lb
 0 lb
 0 lb
 0 lb
 1440 lb
 0 lb
 16 lb
 0 lb

 Structure Total: 9263 lb

Structure Notes:

1. PER ASTM C478 SPECIFICATIONS.
2. CONCRETE = 4,000 PSI AT 28 DAYS.
3. ADMIXTURE = CONBLOCK-CDA RED.
4. CASTING BY OTHERS (JBS 1150 F/C).

REINFORCING PER ASTM A615 (GRADE 60).

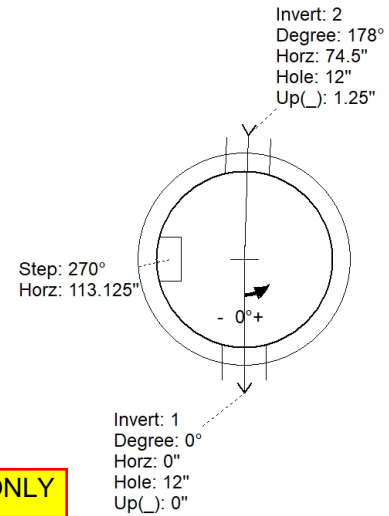
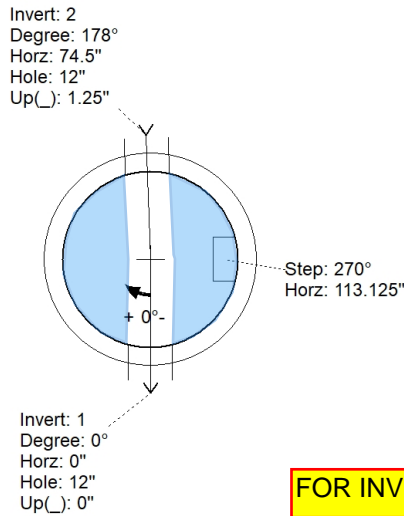
- CONE (As .12)
- RISER (As .12)
- FLOOR (As .31) #5 BARS AT 12" C.C.E.W.

Rim: 476' Rim to Invert: 8.47' Slack: 0.14" Sump: 2" Step Position: 270°

Position	Elev	Angle	Ext. (cw)	Pipe	Pipe OD	Connector	Hole	Horz Size	Up ()	Offset
Invert 1	467.53'	0°	0"	8" PVC SDR26	8.5"	PSX 12-08 NYLO	12"	12.129"	0"	0"
Invert 2	467.63'	178°	90.125"	8" PVC SDR26	8.5"	PSX 12-08 NYLO	12"	12.129"	1.25"	0"
Invert 3										
Invert 4										
Invert 5										
Invert 6										
Invert 7										
Invert 8										

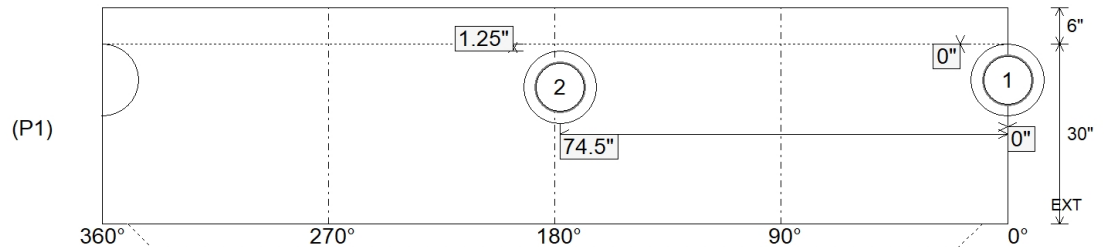
RIGHT-SIDE UP VIEW (int. dimensions)

UPSIDE-DOWN VIEW (int. dimensions)



FOR INVERT ONLY

INSIDE WALL DIMENSIONS



Coating (Int):
 Coating (Ext):

Seam Up: Tongue
 Seam Dn: n/a

Wall Thickness: 5"
 Floor Height: 6"

Height (Int): 30"
 Height (Ext): 36"

Weight (Net): 3330 lb
 Volume (Net): 0.85cu.yd

Job Name: 25-2310 GOOSE CREEK SUBDIVISION
 Job Location: Hartsville, TN
 Contractor: Hayes Pipe Supply

Plant: Beaver Dam
 2/4/2026 12:36:37 PM

Tech: C.Russ
 PC: A.Chambers



Structure ID: SSMH 2

P2 MH048RS36CDARED

MH RISER w/ConBlock-CDA Red T/G

- P4) 24" - CASTING HEIGHT - 7.50" 0 lb
- P3) 48" - ECC CONE w/ 24" HOLE, w/ConBlock-CDA Red F/G - 30" 1961 lb
- P2) 48" - MH RISER w/ConBlock-CDA Red T/G - 36" 2515 lb
- P1) 48" - MH BASE w/ConBlock-CDA Red T/n - 30" 3330 lb
- 1) JOINT WRAP - 0.065"x6"x50' CONSEAL CS212 0 lb
- 1) JOINT WRAP PRIMER - CONSEAL CS-75 (1 gal.) 0 lb
- 1) ADMIXTURE CONBLOCK CDA RED 0 lb
- 1) 48" - MH INVERT CHANNEL w/ConBlock-CDA Red - FULL HEIGHT 1440 lb
- 2) 48" - Conseal CS-102 1.00" (Double) 0 lb
- 2) PSX - 12-08 NYLO 16 lb
- 8) MH Step ML-10-TDS-NCR - 10" 0 lb

Structure Total: 9263 lb

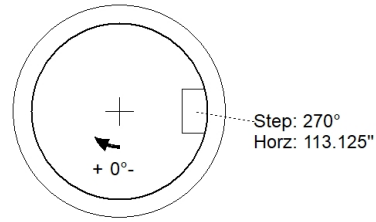
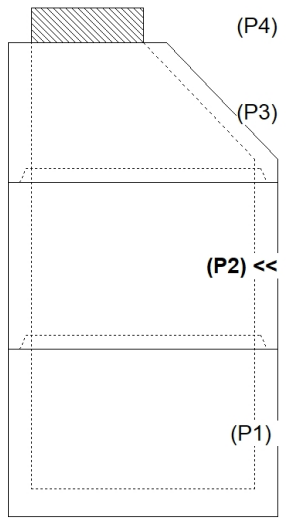
Structure Notes:
 1. PER ASTM C478 SPECIFICATIONS.
 2. CONCRETE = 4,000 PSI AT 28 DAYS.
 3. ADMIXTURE = CONBLOCK-CDA RED.
 4. CASTING BY OTHERS (JBS 1150 F/C).

REINFORCING PER ASTM A615 (GRADE 60).
 - CONE (As .12)
 - RISER (As .12)
 - FLOOR (As .31) #5 BARS AT 12" C.C.E.W.

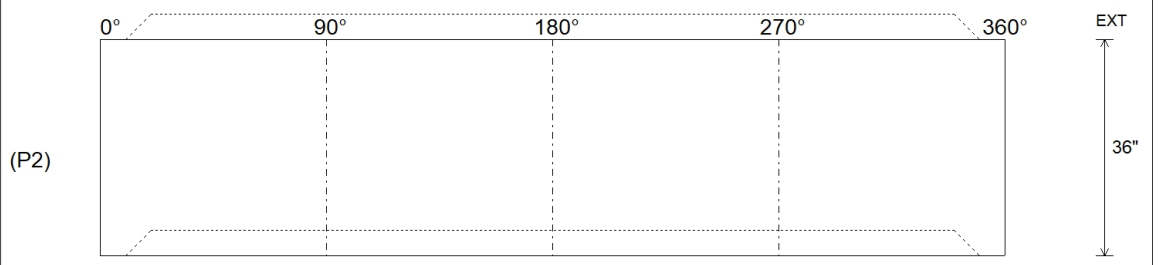
Rim: 476' Rim to Invert: 8.47' Slack: 0.14" Sump: 2" Step Position: 270°

Position	Elev	Angle	Ext. (cw)	Pipe	Pipe OD	Connector	Hole	Horz Size	Up (L)	Offset
Invert 1										
Invert 2										
Invert 3										
Invert 4										
Invert 5										
Invert 6										
Invert 7										
Invert 8										

RIGHT-SIDE UP VIEW (int. dimensions)



INSIDE WALL DIMENSIONS



Coating (Int): Coating (Ext):	Seam Up: Tongue Seam Dn: Groove	Wall Thickness: 5" Floor Height: 0"	Height (Int): 36" Height (Ext): 36"	Weight (Net): 2515 lb Volume (Net): 0.64cu.yd
----------------------------------	------------------------------------	--	--	--

Job Name: 25-2310 GOOSE CREEK SUBDIVISION
 Job Location: Hartsville, TN
 Contractor: Hayes Pipe Supply

Plant: Beaver Dam
 2/4/2026 12:37:04 PM

Tech: C.Russ
 PC: A.Chambers



Structure ID: SSMH 2

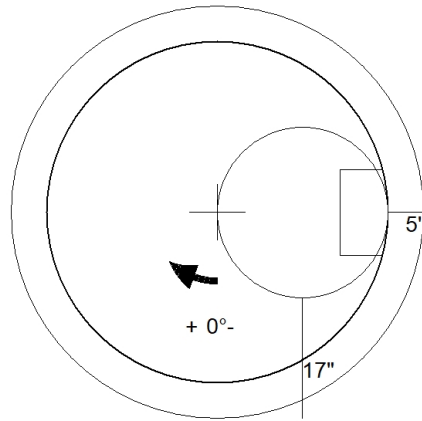
P3 MH048CN30CDARED

ECC CONE w/ 24" HOLE, w/ConBlock-CDA Red F/G

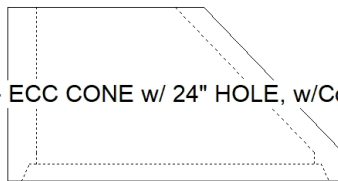
P4) 24" - CASTING HEIGHT - 7.50"	0 lb
P3) 48" - ECC CONE w/ 24" HOLE, w/ConBlock-CDA Red F/G - 30"	1961 lb
P2) 48" - MH RISER w/ConBlock-CDA Red T/G - 36"	2515 lb
P1) 48" - MH BASE w/ConBlock-CDA Red T/n - 30"	3330 lb
1) JOINT WRAP - 0.065"x6"x50' CONSEAL CS212	0 lb
1) JOINT WRAP PRIMER - CONSEAL CS-75 (1 gal.)	0 lb
1) ADMIXTURE CONBLOCK CDA RED	0 lb
1) 48" - MH INVERT CHANNEL w/ConBlock-CDA Red - FULL HEIGHT	1440 lb
2) 48" - Conseal CS-102 1.00" (Double)	0 lb
2) PSX - 12-08 NYLO	16 lb
8) MH Step ML-10-TDS-NCR - 10"	0 lb
Structure Total:	9263 lb

Structure Notes:
 1. PER ASTM C478 SPECIFICATIONS.
 2. CONCRETE = 4,000 PSI AT 28 DAYS.
 3. ADMIXTURE = CONBLOCK-CDA RED.
 4. CASTING BY OTHERS (JBS 1150 F/C).

REINFORCING PER ASTM A615 (GRADE 60).
 - CONE (As .12)
 - RISER (As .12)
 - FLOOR (As .31) #5 BARS AT 12" C.C.E.W.



48" - ECC CONE w/ 24" HOLE, w/ConBlock-CDA Red F/G - 30" - (P3)



Coating (Int):
 Coating (Ext):

Seam Up: Flat
 Seam Dn: Groove

Wall Thickness: 5"

Height (Ext): 30"

Weight (Net): 1961 lb
 Volume (Net): 0.5cu.yd

Job Name: 25-2310 GOOSE CREEK SUBDIVISION
 Job Location: Hartsville, TN
 Contractor: Hayes Pipe Supply

Plant: Beaver Dam
 2/4/2026 12:36:20 PM

Tech: C.Russ
 PC: A.Chambers



Structure ID: SSMH 3

P1 MH048BA36CDARED

MH BASE w/ConBlock-CDA Red T/n

- P4) 24" - CASTING HEIGHT - 7.50" 0 lb
- P3) 24" - GRADE RING w/ConBlock-CDA Red F/F - 4" 270 lb
- P2) 48" - ECC CONE w/ 24" HOLE, w/ConBlock-CDA Red F/G - 42" 3116 lb
- P1) 48" - MH BASE w/ConBlock-CDA Red T/n - 36" 3701 lb
- 1) JOINT WRAP - 0.065"x6"x50' CONSEAL CS212 0 lb
- 1) JOINT WRAP PRIMER - CONSEAL CS-75 (1 gal.) 0 lb
- 1) ADMIXTURE CONBLOCK CDA RED 0 lb
- 1) 48" - MH INVERT CHANNEL w/ConBlock-CDA Red - FULL HEIGHT 1440 lb
- 1) 48" - Conseal CS-102 1.00" (Double) 0 lb
- 3) PSX - 12-08 NYLO 24 lb
- 7) MH Step ML-10-TDS-NCR - 10" 0 lb

Structure Total: 8552 lb

Structure Notes:
 1. PER ASTM C478 SPECIFICATIONS.
 2. CONCRETE = 4,000 PSI AT 28 DAYS.
 3. ADMIXTURE = CONBLOCK-CDA RED.
 4. CASTING BY OTHERS (JBS 1150 F/C).

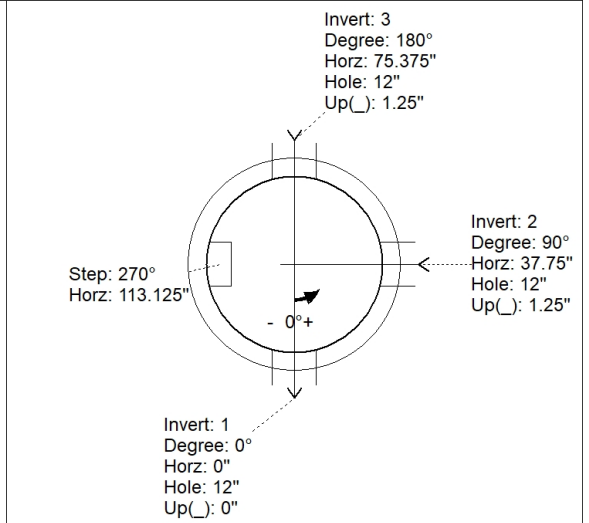
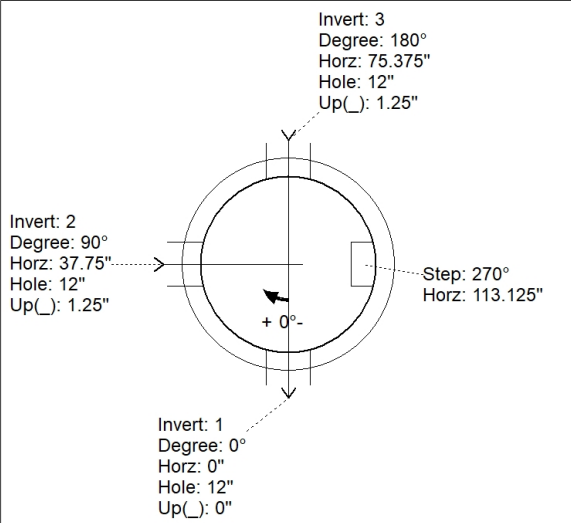
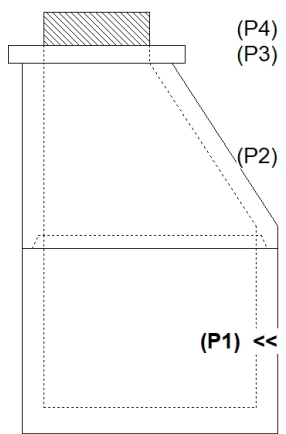
REINFORCING PER ASTM A615 (GRADE 60).
 - CONE (As .12)
 - RISER (As .12)
 - FLOOR (As .31) #5 BARS AT 12" C.C.E.W.

Rim: 507.25' Rim to Invert: 7.35' Slack: 0.7' Sump: 2' Step Position: 270°

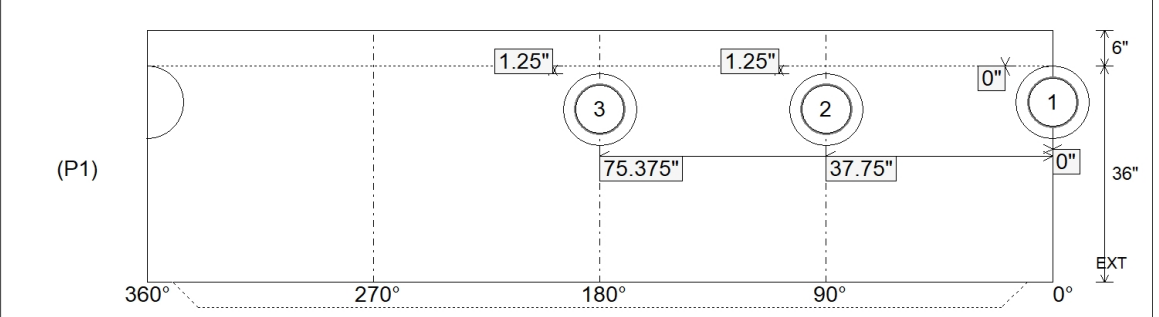
Position	Elev	Angle	Ext. (cw)	Pipe	Pipe OD	Connector	Hole	Horz Size	Up ()	Offset
Invert 1	499.9'	0°	0"	8" PVC SDR26	8.5"	PSX 12-08 NYLO	12"	12.129"	0"	0"
Invert 2	500'	90°	45.5"	8" PVC SDR26	8.5"	PSX 12-08 NYLO	12"	12.129"	1.25"	0"
Invert 3	500'	180°	91.125"	8" PVC SDR26	8.5"	PSX 12-08 NYLO	12"	12.129"	1.25"	0"
Invert 4										
Invert 5										
Invert 6										
Invert 7										
Invert 8										

RIGHT-SIDE UP VIEW (int. dimensions)

UPSIDE-DOWN VIEW (int. dimensions)



INSIDE WALL DIMENSIONS



Coating (Int): Coating (Ext):	Seam Up: Tongue Seam Dn: n/a	Wall Thickness: 5" Floor Height: 6"	Height (Int): 36" Height (Ext): 42"	Weight (Net): 3701 lb Volume (Net): 0.94cu.yd
----------------------------------	---------------------------------	--	--	--

Job Name: 25-2310 GOOSE CREEK SUBDIVISION
 Job Location: Hartsville, TN
 Contractor: Hayes Pipe Supply

Plant: Beaver Dam

Tech: C.Russ

2/4/2026 12:36:20 PM

PC: A.Chambers



Structure ID: SSMH 3

P1A MH048BA36CDARED

MH BASE w/ConBlock-CDA Red T/n

- P4) 24" - CASTING HEIGHT - 7.50" 0 lb
- P3) 24" - GRADE RING w/ConBlock-CDA Red F/F - 4" 270 lb
- P2) 48" - ECC CONE w/ 24" HOLE, w/ConBlock-CDA Red F/G - 42" 3116 lb
- P1) 48" - MH BASE w/ConBlock-CDA Red T/n - 36" 3701 lb
- 1) JOINT WRAP - 0.065"x6"x50' CONSEAL CS212 0 lb
- 1) JOINT WRAP PRIMER - CONSEAL CS-75 (1 gal.) 0 lb
- 1) ADMIXTURE CONBLOCK CDA RED 0 lb
- 1) 48" - MH INVERT CHANNEL w/ConBlock-CDA Red - FULL HEIGHT 1440 lb
- 1) 48" - Conseal CS-102 1.00" (Double) 0 lb
- 3) PSX - 12-08 NYLO 24 lb
- 7) MH Step ML-10-TDS-NCR - 10" 0 lb

Structure Total: 8552 lb

Structure Notes:
 1. PER ASTM C478 SPECIFICATIONS.
 2. CONCRETE = 4,000 PSI AT 28 DAYS.
 3. ADMIXTURE = CONBLOCK-CDA RED.
 4. CASTING BY OTHERS (JBS 1150 F/C).

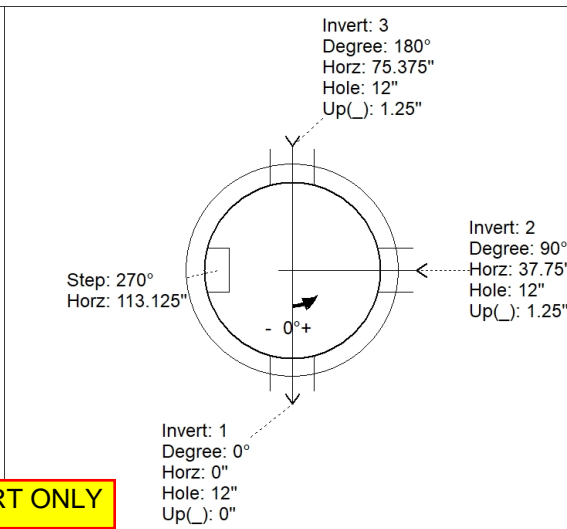
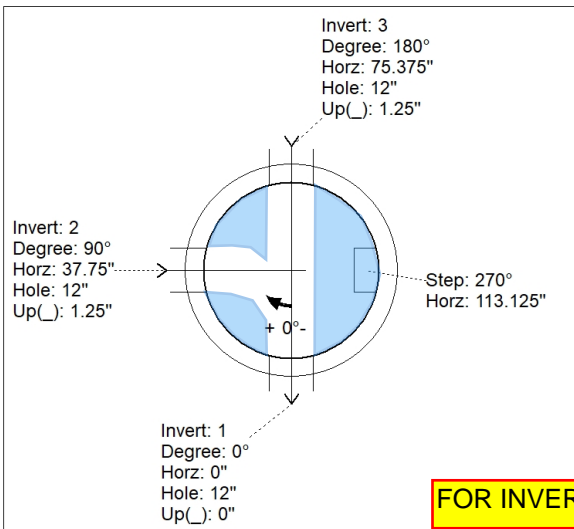
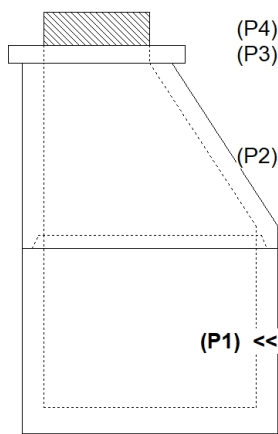
REINFORCING PER ASTM A615 (GRADE 60).
 - CONE (As .12)
 - RISER (As .12)
 - FLOOR (As .31) #5 BARS AT 12" C.C.E.W.

Rim: 507.25' Rim to Invert: 7.35' Slack: 0.7' Sump: 2' Step Position: 270°

Position	Elev	Angle	Ext. (cw)	Pipe	Pipe OD	Connector	Hole	Horz Size	Up ()	Offset
Invert 1	499.9'	0°	0"	8" PVC SDR26	8.5"	PSX 12-08 NYLO	12"	12.129"	0"	0"
Invert 2	500'	90°	45.5"	8" PVC SDR26	8.5"	PSX 12-08 NYLO	12"	12.129"	1.25"	0"
Invert 3	500'	180°	91.125"	8" PVC SDR26	8.5"	PSX 12-08 NYLO	12"	12.129"	1.25"	0"
Invert 4										
Invert 5										
Invert 6										
Invert 7										
Invert 8										

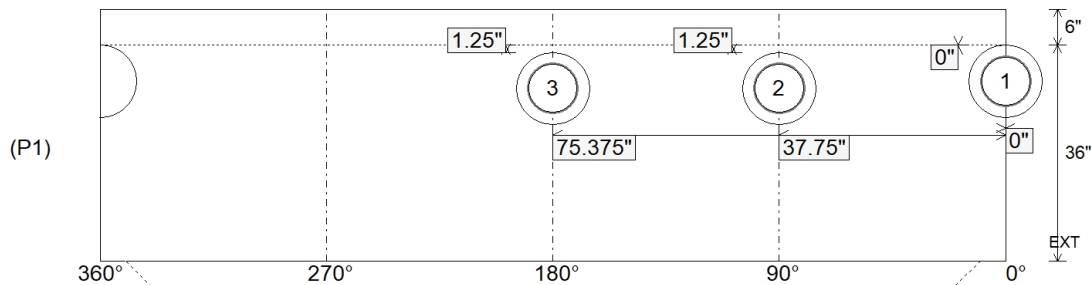
RIGHT-SIDE UP VIEW (int. dimensions)

UPSIDE-DOWN VIEW (int. dimensions)



FOR INVERT ONLY

INSIDE WALL DIMENSIONS



Coating (Int):
Coating (Ext):

Seam Up: Tongue
Seam Dn: n/a

Wall Thickness: 5"
Floor Height: 6"

Height (Int): 36"
Height (Ext): 42"

Weight (Net): 3701 lb
Volume (Net): 0.94cu.yd

Job Name: 25-2310 GOOSE CREEK SUBDIVISION
 Job Location: Hartsville, TN
 Contractor: Hayes Pipe Supply

Plant: Beaver Dam
 2/4/2026 12:37:04 PM

Tech: C.Russ
 PC: A.Chambers



Structure ID: SSMH 3

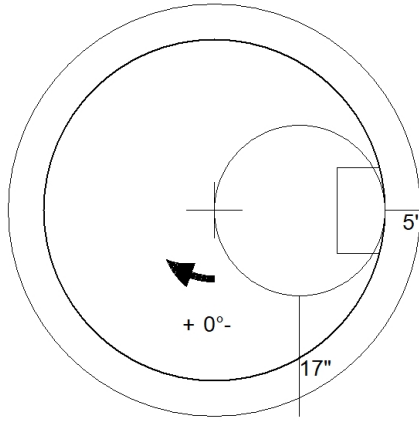
P2 MH048CN42CDARED

ECC CONE w/ 24" HOLE, w/ConBlock-CDA Red F/G

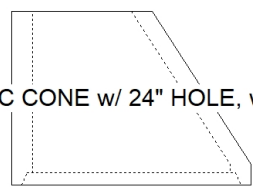
P4) 24" - CASTING HEIGHT - 7.50"	0 lb
P3) 24" - GRADE RING w/ConBlock-CDA Red F/F - 4"	270 lb
P2) 48" - ECC CONE w/ 24" HOLE, w/ConBlock-CDA Red F/G - 42"	3116 lb
P1) 48" - MH BASE w/ConBlock-CDA Red T/n - 36"	3701 lb
1) JOINT WRAP - 0.065"x6"x50' CONSEAL CS212	0 lb
1) JOINT WRAP PRIMER - CONSEAL CS-75 (1 gal.)	0 lb
1) ADMIXTURE CONBLOCK CDA RED	0 lb
1) 48" - MH INVERT CHANNEL w/ConBlock-CDA Red - FULL HEIGHT	1440 lb
1) 48" - Conseal CS-102 1.00" (Double)	0 lb
3) PSX - 12-08 NYLO	24 lb
7) MH Step ML-10-TDS-NCR - 10"	0 lb
Structure Total:	8552 lb

Structure Notes:
 1. PER ASTM C478 SPECIFICATIONS.
 2. CONCRETE = 4,000 PSI AT 28 DAYS.
 3. ADMIXTURE = CONBLOCK-CDA RED.
 4. CASTING BY OTHERS (JBS 1150 F/C).

REINFORCING PER ASTM A615 (GRADE 60).
 - CONE (As .12)
 - RISER (As .12)
 - FLOOR (As .31) #5 BARS AT 12" C.C.E.W.



48" - ECC CONE w/ 24" HOLE, w/ConBlock-CDA Red F/G - 42" - (P2)



Coating (Int): Coating (Ext):	Seam Up: Flat Seam Dn: Groove	Wall Thickness: 5"	Height (Ext): 42"	Weight (Net): 3116 lb Volume (Net): 0.8cu.yd
----------------------------------	----------------------------------	--------------------	-------------------	---

Job Name: 25-2310 GOOSE CREEK SUBDIVISION
 Job Location: Hartsville, TN
 Contractor: Hayes Pipe Supply

Plant: Beaver Dam
 2/4/2026 12:37:04 PM

Tech: C.Russ
 PC: A.Chambers



Structure ID: SSMH 3

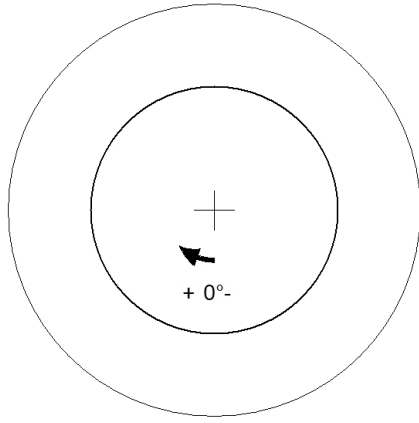
P3 GR4CDARED

GRADE RING w/ConBlock-CDA Red F/F

P4) 24" - CASTING HEIGHT - 7.50"	0 lb
P3) 24" - GRADE RING w/ConBlock-CDA Red F/F - 4"	270 lb
P2) 48" - ECC CONE w/ 24" HOLE, w/ConBlock-CDA Red F/G - 42"	3116 lb
P1) 48" - MH BASE w/ConBlock-CDA Red T/n - 36"	3701 lb
1) JOINT WRAP - 0.065"x6"x50' CONSEAL CS212	0 lb
1) JOINT WRAP PRIMER - CONSEAL CS-75 (1 gal.)	0 lb
1) ADMIXTURE CONBLOCK CDA RED	0 lb
1) 48" - MH INVERT CHANNEL w/ConBlock-CDA Red - FULL HEIGHT	1440 lb
1) 48" - Conseal CS-102 1.00" (Double)	0 lb
3) PSX - 12-08 NYLO	24 lb
7) MH Step ML-10-TDS-NCR - 10"	0 lb
Structure Total:	8552 lb

Structure Notes:
 1. PER ASTM C478 SPECIFICATIONS.
 2. CONCRETE = 4,000 PSI AT 28 DAYS.
 3. ADMIXTURE = CONBLOCK-CDA RED.
 4. CASTING BY OTHERS (JBS 1150 F/C).

REINFORCING PER ASTM A615 (GRADE 60).
 - CONE (As .12)
 - RISER (As .12)
 - FLOOR (As .31) #5 BARS AT 12" C.C.E.W.



24" - GRADE RING w/ConBlock-CDA Red F/F - 4" - (P3)

Coating (Int): Coating (Ext):	Seam Up: Flat Seam Dn: Flat	Wall Thickness: 8"	Height (Ext): 4"	Weight (Net): 270 lb Volume (Net): 0.07cu.yd
----------------------------------	--------------------------------	--------------------	------------------	---

Job Name: 25-2310 GOOSE CREEK SUBDIVISION
 Job Location: Hartsville, TN
 Contractor: Hayes Pipe Supply

Plant: Beaver Dam
 2/4/2026 12:36:20 PM

Tech: C.Russ
 PC: A.Chambers



Structure ID: SSMH 4

P1 MH048BA30CDARED

MH BASE w/ConBlock-CDA Red T/n

- P3) 24" - CASTING HEIGHT - 7.50" 0 lb
- P2) 48" - ECC CONE w/ 24" HOLE, w/ConBlock-CDA Red F/G - 36" 2251 lb
- P1) 48" - MH BASE w/ConBlock-CDA Red T/n - 30" 3378 lb
- 1) JOINT WRAP - 0.065"x6"x50' CONSEAL CS212 0 lb
- 1) JOINT WRAP PRIMER - CONSEAL CS-75 (1 gal.) 0 lb
- 1) ADMIXTURE CONBLOCK CDA RED 0 lb
- 1) 48" - MH INVERT CHANNEL w/ConBlock-CDA Red - FULL HEIGHT 1440 lb
- 1) 48" - Conseal CS-102 1.00" (Double) 0 lb
- 1) PSX - 12-08 NYLO 8 lb
- 5) MH Step ML-10-TDS-NCR - 10" 0 lb

Structure Total: 7077 lb

Structure Notes:

1. PER ASTM C478 SPECIFICATIONS.
2. CONCRETE = 4,000 PSI AT 28 DAYS.
3. ADMIXTURE = CONBLOCK-CDA RED.
4. CASTING BY OTHERS (JBS 1150 F/C).

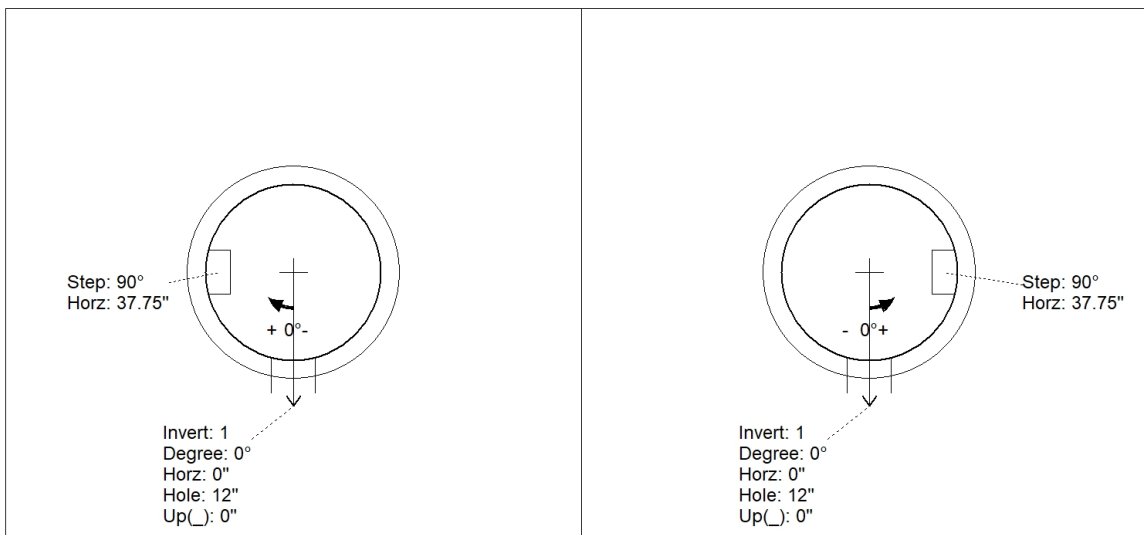
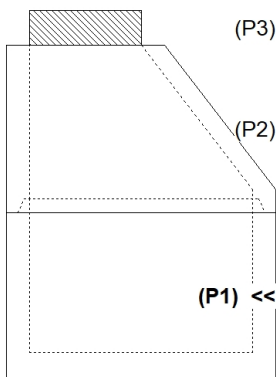
REINFORCING PER ASTM A615 (GRADE 60).
 - CONE (As .12)
 - RISER (As .12)
 - FLOOR (As .31) #5 BARS AT 12" C.C.E.W.

Rim: 512' Rim to Invert: 5.91' Slack: -0.58" Sump: 2" Step Position: 90°

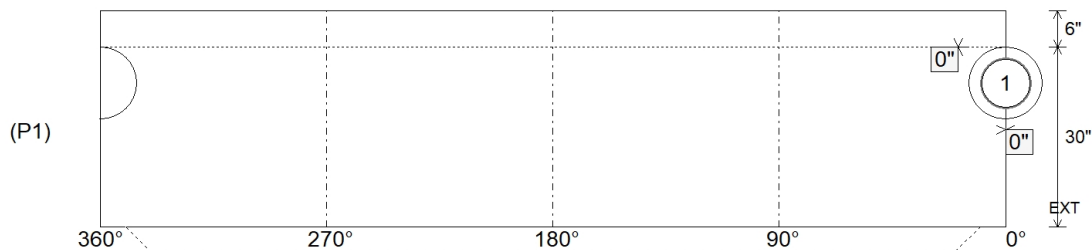
Position	Elev	Angle	Ext. (cw)	Pipe	Pipe OD	Connector	Hole	Horz Size	Up ()	Offset
Invert 1	506.09'	0°	0"	8" PVC SDR26	8.5"	PSX 12-08 NYLO	12"	12.129"	0"	0"
Invert 2										
Invert 3										
Invert 4										
Invert 5										
Invert 6										
Invert 7										
Invert 8										

RIGHT-SIDE UP VIEW (int. dimensions)

UPSIDE-DOWN VIEW (int. dimenions)



INSIDE WALL DIMENSIONS



Coating (Int):
 Coating (Ext):

Seam Up: Tongue
 Seam Dn: n/a

Wall Thickness: 5"
 Floor Height: 6"

Height (Int): 30"
 Height (Ext): 36"

Weight (Net): 3378 lb
 Volume (Net): 0.86cu.yd

Job Name: 25-2310 GOOSE CREEK SUBDIVISION
 Job Location: Hartsville, TN
 Contractor: Hayes Pipe Supply

Plant: Beaver Dam
 2/4/2026 12:36:20 PM

Tech: C.Russ
 PC: A.Chambers



Structure ID: SSMH 4

P1A MH048BA30CDARED

MH BASE w/ConBlock-CDA Red T/n

P3) 24" - CASTING HEIGHT - 7.50"	0 lb
P2) 48" - ECC CONE w/ 24" HOLE, w/ConBlock-CDA Red F/G - 36"	2251 lb
P1) 48" - MH BASE w/ConBlock-CDA Red T/n - 30"	3378 lb
1) JOINT WRAP - 0.065"x6"x50' CONSEAL CS212	0 lb
1) JOINT WRAP PRIMER - CONSEAL CS-75 (1 gal.)	0 lb
1) ADMIXTURE CONBLOCK CDA RED	0 lb
1) 48" - MH INVERT CHANNEL w/ConBlock-CDA Red - FULL HEIGHT	1440 lb
1) 48" - Conseal CS-102 1.00" (Double)	0 lb
1) PSX - 12-08 NYLO	8 lb
5) MH Step ML-10-TDS-NCR - 10"	0 lb
Structure Total:	7077 lb

Structure Notes:
 1. PER ASTM C478 SPECIFICATIONS.
 2. CONCRETE = 4,000 PSI AT 28 DAYS.
 3. ADMIXTURE = CONBLOCK-CDA RED.
 4. CASTING BY OTHERS (JBS 1150 F/C).

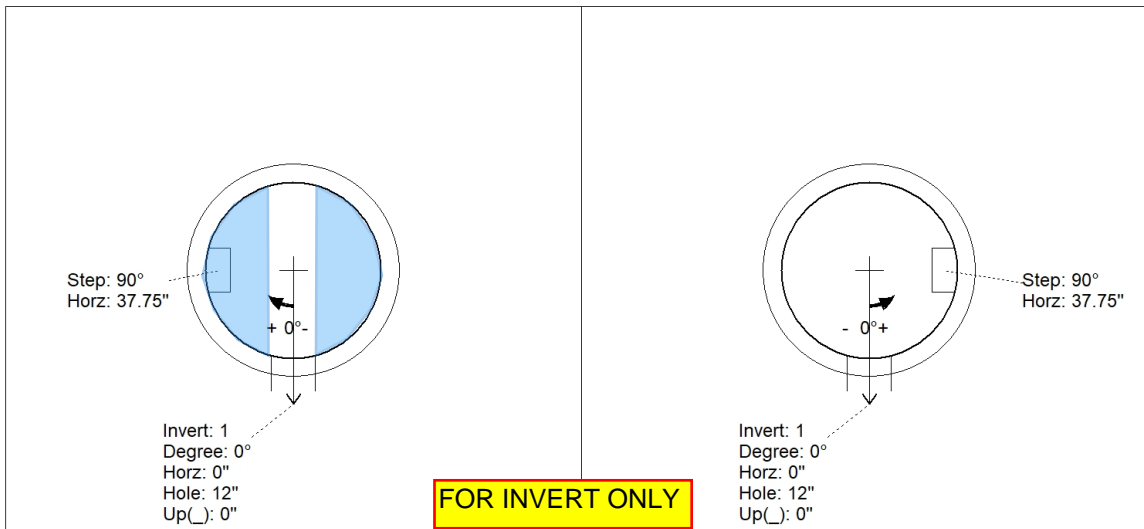
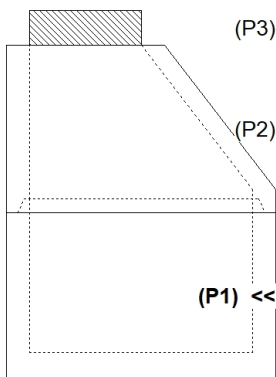
REINFORCING PER ASTM A615 (GRADE 60).
 - CONE (As .12)
 - RISER (As .12)
 - FLOOR (As .31) #5 BARS AT 12" C.C.E.W.

Rim: 512' Rim to Invert: 5.91' Slack: -0.58" Sump: 2" Step Position: 90°

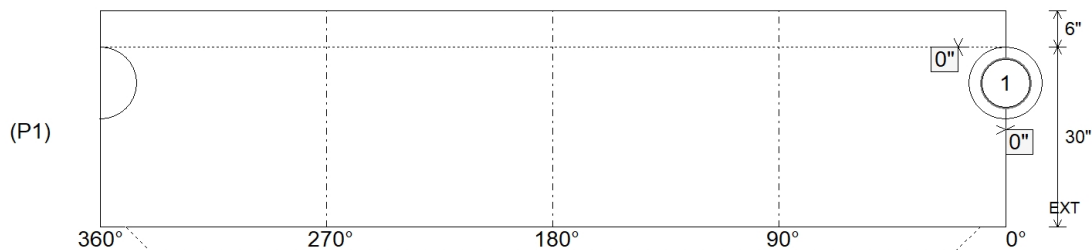
Position	Elev	Angle	Ext. (cw)	Pipe	Pipe OD	Connector	Hole	Horz Size	Up ()	Offset
Invert 1	506.09'	0°	0"	8" PVC SDR26	8.5"	PSX 12-08 NYLO	12"	12.129"	0"	0"
Invert 2										
Invert 3										
Invert 4										
Invert 5										
Invert 6										
Invert 7										
Invert 8										

RIGHT-SIDE UP VIEW (int. dimensions)

UPSIDE-DOWN VIEW (int. dimenions)



INSIDE WALL DIMENSIONS



Coating (Int): Coating (Ext):	Seam Up: Tongue Seam Dn: n/a	Wall Thickness: 5" Floor Height: 6"	Height (Int): 30" Height (Ext): 36"	Weight (Net): 3378 lb Volume (Net): 0.86cu.yd
----------------------------------	---------------------------------	--	--	--

Job Name: 25-2310 GOOSE CREEK SUBDIVISION
 Job Location: Hartsville, TN
 Contractor: Hayes Pipe Supply

Plant: Beaver Dam
 2/4/2026 12:37:05 PM

Tech: C.Russ
 PC: A.Chambers



Structure ID: SSMH 4

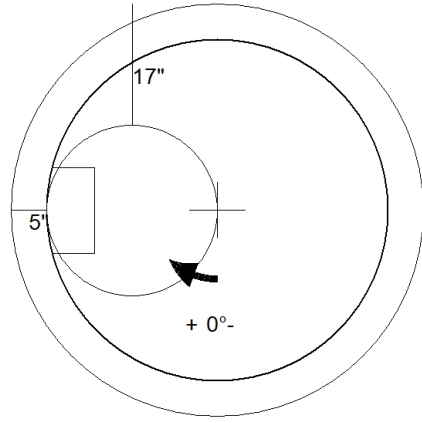
P2 MH048CN36CDARED

ECC CONE w/ 24" HOLE, w/ConBlock-CDA Red F/G

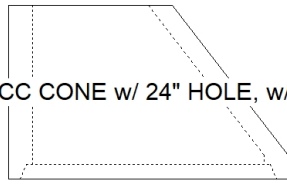
P3) 24" - CASTING HEIGHT - 7.50"	0 lb
P2) 48" - ECC CONE w/ 24" HOLE, w/ConBlock-CDA Red F/G - 36"	2251 lb
P1) 48" - MH BASE w/ConBlock-CDA Red T/n - 30"	3378 lb
1) JOINT WRAP - 0.065"x6"x50' CONSEAL CS212	0 lb
1) JOINT WRAP PRIMER - CONSEAL CS-75 (1 gal.)	0 lb
1) ADMIXTURE CONBLOCK CDA RED	0 lb
1) 48" - MH INVERT CHANNEL w/ConBlock-CDA Red - FULL HEIGHT	1440 lb
1) 48" - Conseal CS-102 1.00" (Double)	0 lb
1) PSX - 12-08 NYLO	8 lb
5) MH Step ML-10-TDS-NCR - 10"	0 lb
Structure Total:	7077 lb

Structure Notes:
 1. PER ASTM C478 SPECIFICATIONS.
 2. CONCRETE = 4,000 PSI AT 28 DAYS.
 3. ADMIXTURE = CONBLOCK-CDA RED.
 4. CASTING BY OTHERS (JBS 1150 F/C).

REINFORCING PER ASTM A615 (GRADE 60).
 - CONE (As .12)
 - RISER (As .12)
 - FLOOR (As .31) #5 BARS AT 12" C.C.E.W.



48" - ECC CONE w/ 24" HOLE, w/ConBlock-CDA Red F/G - 36" - (P2)



Coating (Int): Coating (Ext):	Seam Up: Flat Seam Dn: Groove	Wall Thickness: 5"	Height (Ext): 36"	Weight (Net): 2251 lb Volume (Net): 0.57cu.yd
----------------------------------	----------------------------------	--------------------	-------------------	--

Job Name: 25-2310 GOOSE CREEK SUBDIVISION
 Job Location: Hartsville, TN
 Contractor: Hayes Pipe Supply

Plant: Beaver Dam

Tech: C.Russ

2/4/2026 12:36:21 PM

PC: A.Chambers



Structure ID: SSMH 5

P1 MH048BA30X

MH BASE w/XYPEX T/n

P3) 24" - CASTING HEIGHT - 7.50"	0 lb
P2) 48" - ECC XYPEX CONE w/ 24" HOLE-SPECIAL F/G - 36"	2251 lb
P1) 48" - MH BASE w/XYPEX T/n - 30"	3315 lb
1) 48" - MH INVERT CHANNEL - FULL HEIGHT	1440 lb
1) JOINT WRAP - 0.065"x6"x50' CONSEAL CS212	0 lb
1) JOINT WRAP PRIMER - CONSEAL CS-75 (1 gal.)	0 lb
1) 48" - MH INVERT CHANNEL w/ConBlock-CDA Red - FULL HEIGHT	1440 lb
1) ADMIXTURE CONBLOCK CDA RED	0 lb
1) 48" - DBL 1"x14.5' Butyl (2x)	0 lb
1) PSX - 12-08 NYLO	8 lb
3) PSX - 8QRS-S NYLO	20 lb
Structure Total:	8473 lb

Structure Notes:
 1. PER ASTM C478 SPECIFICATIONS.
 2. CONCRETE = 4,000 PSI AT 28 DAYS.
 3. ADMIXTURE = CONBLOCK-CDA RED.
 4. CASTING BY OTHERS (JBS 1150 F/C).

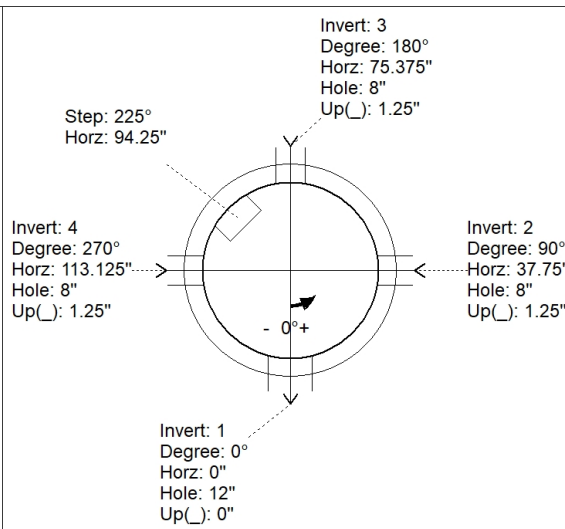
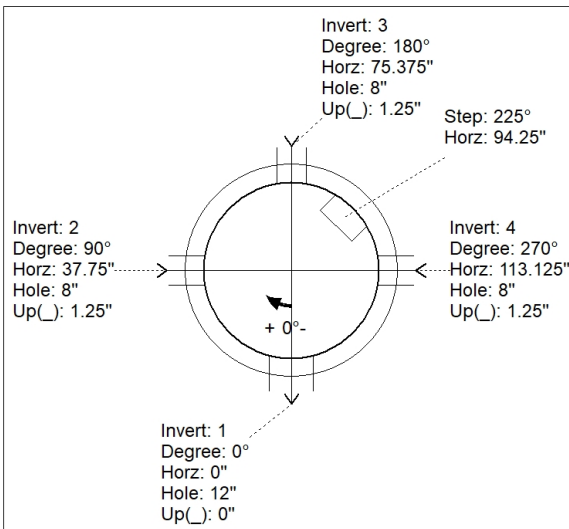
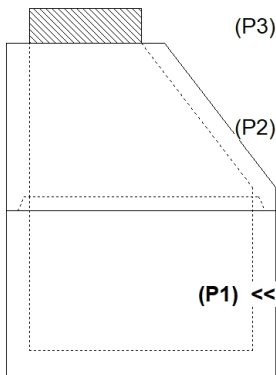
REINFORCING PER ASTM A615 (GRADE 60).
 - CONE (As .12)
 - RISER (As .12)
 - FLOOR (As .31) #5 BARS AT 12" C.C.E.W.

Rim: 508' Rim to Invert: 6' Slack: 0.5" Sump: 2" Step Position: 225°

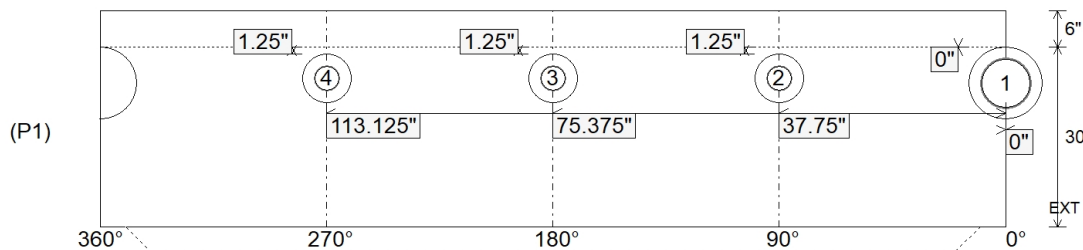
Position	Elev	Angle	Ext. (cw)	Pipe	Pipe OD	Connector	Hole	Horz Size	Up ()	Offset
Invert 1	502'	0°	0"	8" PVC SDR26	8.5"	PSX 12-08 NYLO	12"	12.129"	0"	0"
Invert 2	502.1'	90°	45.5"	4" PVC SDR26	4.25"	PSX 8QRS-S NYLO	8"	8.038"	1.25"	0"
Invert 3	502.1'	180°	91.125"	4" PVC SDR26	4.25"	PSX 8QRS-S NYLO	8"	8.038"	1.25"	0"
Invert 4	502.1'	270°	136.625"	4" PVC SDR26	4.25"	PSX 8QRS-S NYLO	8"	8.038"	1.25"	0"
Invert 5										
Invert 6										
Invert 7										
Invert 8										

RIGHT-SIDE UP VIEW (int. dimensions)

UPSIDE-DOWN VIEW (int. dimensions)



INSIDE WALL DIMENSIONS



Coating (Int):
 Coating (Ext):

Seam Up: Tongue
 Seam Dn: n/a

Wall Thickness: 5"
 Floor Height: 6"

Height (Int): 30"
 Height (Ext): 36"

Weight (Net): 3315 lb
 Volume (Net): 0.85cu.yd

Job Name: 25-2310 GOOSE CREEK SUBDIVISION
 Job Location: Hartsville, TN
 Contractor: Hayes Pipe Supply

Plant: Beaver Dam

Tech: C.Russ

2/4/2026 12:36:21 PM

PC: A.Chambers



Structure ID: SSMH 5

P1A MH048BA30X

MH BASE w/XYPEX T/n

P3) 24" - CASTING HEIGHT - 7.50"	0 lb
P2) 48" - ECC XYPEX CONE w/ 24" HOLE-SPECIAL F/G - 36"	2251 lb
P1) 48" - MH BASE w/XYPEX T/n - 30"	3315 lb
1) 48" - MH INVERT CHANNEL - FULL HEIGHT	1440 lb
1) JOINT WRAP - 0.065"x6"x50' CONSEAL CS212	0 lb
1) JOINT WRAP PRIMER - CONSEAL CS-75 (1 gal.)	0 lb
1) 48" - MH INVERT CHANNEL w/ConBlock-CDA Red - FULL HEIGHT	1440 lb
1) ADMIXTURE CONBLOCK CDA RED	0 lb
1) 48" - DBL 1"x14.5' Butyl (2x)	0 lb
1) PSX - 12-08 NYLO	8 lb
3) PSX - 8QRS-S NYLO	20 lb
Structure Total:	8473 lb

Structure Notes:
 1. PER ASTM C478 SPECIFICATIONS.
 2. CONCRETE = 4,000 PSI AT 28 DAYS.
 3. ADMIXTURE = CONBLOCK-CDA RED.
 4. CASTING BY OTHERS (JBS 1150 F/C).

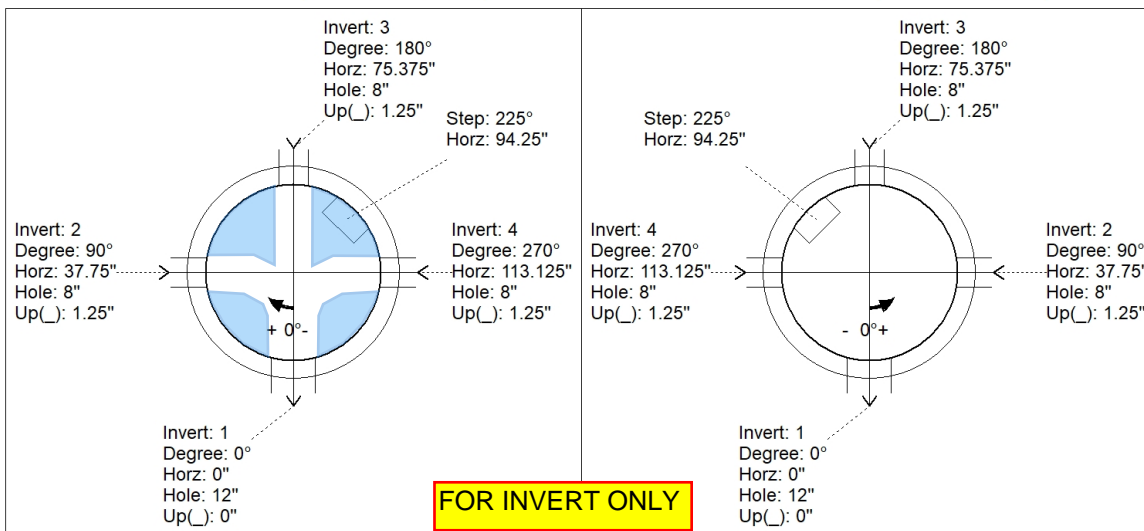
REINFORCING PER ASTM A615 (GRADE 60).
 - CONE (As .12)
 - RISER (As .12)
 - FLOOR (As .31) #5 BARS AT 12" C.C.E.W.

Rim: 508' Rim to Invert: 6' Slack: 0.5" Sump: 2" Step Position: 225°

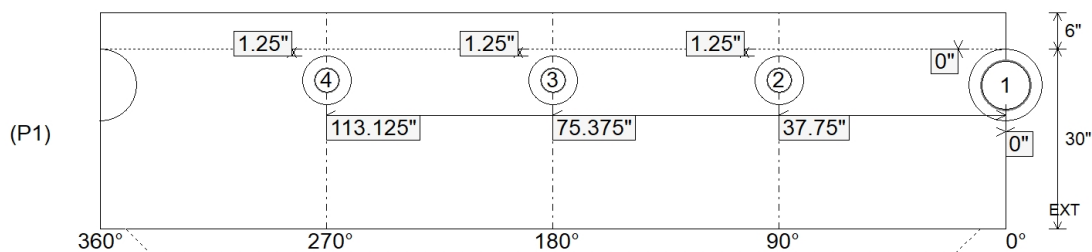
Position	Elev	Angle	Ext. (cw)	Pipe	Pipe OD	Connector	Hole	Horz Size	Up ()	Offset
Invert 1	502'	0°	0"	8" PVC SDR26	8.5"	PSX 12-08 NYLO	12"	12.129"	0"	0"
Invert 2	502.1'	90°	45.5"	4" PVC SDR26	4.25"	PSX 8QRS-S NYLO	8"	8.038"	1.25"	0"
Invert 3	502.1'	180°	91.125"	4" PVC SDR26	4.25"	PSX 8QRS-S NYLO	8"	8.038"	1.25"	0"
Invert 4	502.1'	270°	136.625"	4" PVC SDR26	4.25"	PSX 8QRS-S NYLO	8"	8.038"	1.25"	0"
Invert 5										
Invert 6										
Invert 7										
Invert 8										

RIGHT-SIDE UP VIEW (int. dimensions)

UPSIDE-DOWN VIEW (int. dimensions)



INSIDE WALL DIMENSIONS



Coating (Int): Coating (Ext):	Seam Up: Tongue Seam Dn: n/a	Wall Thickness: 5" Floor Height: 6"	Height (Int): 30" Height (Ext): 36"	Weight (Net): 3315 lb Volume (Net): 0.85cu.yd
----------------------------------	---------------------------------	--	--	--

Job Name: 25-2310 GOOSE CREEK SUBDIVISION
 Job Location: Hartsville, TN
 Contractor: Hayes Pipe Supply

Plant: Beaver Dam
 2/4/2026 12:37:05 PM

Tech: C.Russ
 PC: A.Chambers



Structure ID: SSMH 5

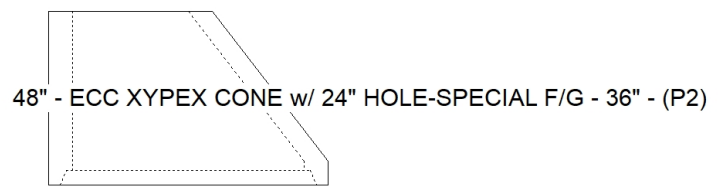
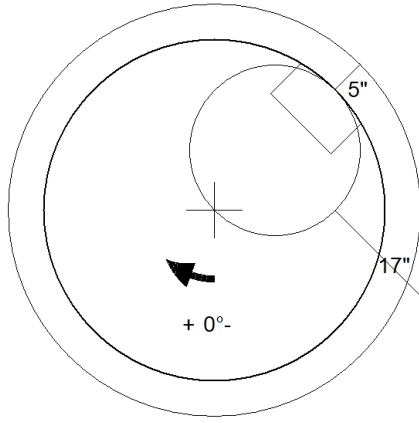
P2 MH048CN36X-SP

ECC XYPEX CONE w/ 24" HOLE-SPECIAL F/G

P3) 24" - CASTING HEIGHT - 7.50"	0 lb
P2) 48" - ECC XYPEX CONE w/ 24" HOLE-SPECIAL F/G - 36"	2251 lb
P1) 48" - MH BASE w/XYPEX T/n - 30"	3315 lb
1) 48" - MH INVERT CHANNEL - FULL HEIGHT	1440 lb
1) JOINT WRAP - 0.065"x6"x50' CONSEAL CS212	0 lb
1) JOINT WRAP PRIMER - CONSEAL CS-75 (1 gal.)	0 lb
1) 48" - MH INVERT CHANNEL w/ConBlock-CDA Red - FULL HEIGHT	1440 lb
1) ADMIXTURE CONBLOCK CDA RED	0 lb
1) 48" - DBL 1"x14.5' Butyl (2x)	0 lb
1) PSX - 12-08 NYLO	8 lb
3) PSX - 8QRS-S NYLO	20 lb
Structure Total:	8473 lb

Structure Notes:
 1. PER ASTM C478 SPECIFICATIONS.
 2. CONCRETE = 4,000 PSI AT 28 DAYS.
 3. ADMIXTURE = CONBLOCK-CDA RED.
 4. CASTING BY OTHERS (JBS 1150 F/C).

REINFORCING PER ASTM A615 (GRADE 60).
 - CONE (As .12)
 - RISER (As .12)
 - FLOOR (As .31) #5 BARS AT 12" C.C.E.W.



Coating (Int): Coating (Ext):	Seam Up: Flat Seam Dn: Groove	Wall Thickness: 5"	Height (Ext): 36"	Weight (Net): 2251 lb Volume (Net): 0.57cu.yd
----------------------------------	----------------------------------	--------------------	-------------------	--