

Job Name: 25-2290 - AutoZone 9385
 Job Location: Louisville, KY
 Contractor: Cornell Harbison Excavating

Plant: 100
 2/23/2026 10:32:23 AM

Tech: J. Horsley - A
 PC: Jay Ross Jarvis



Structure ID: 1-0

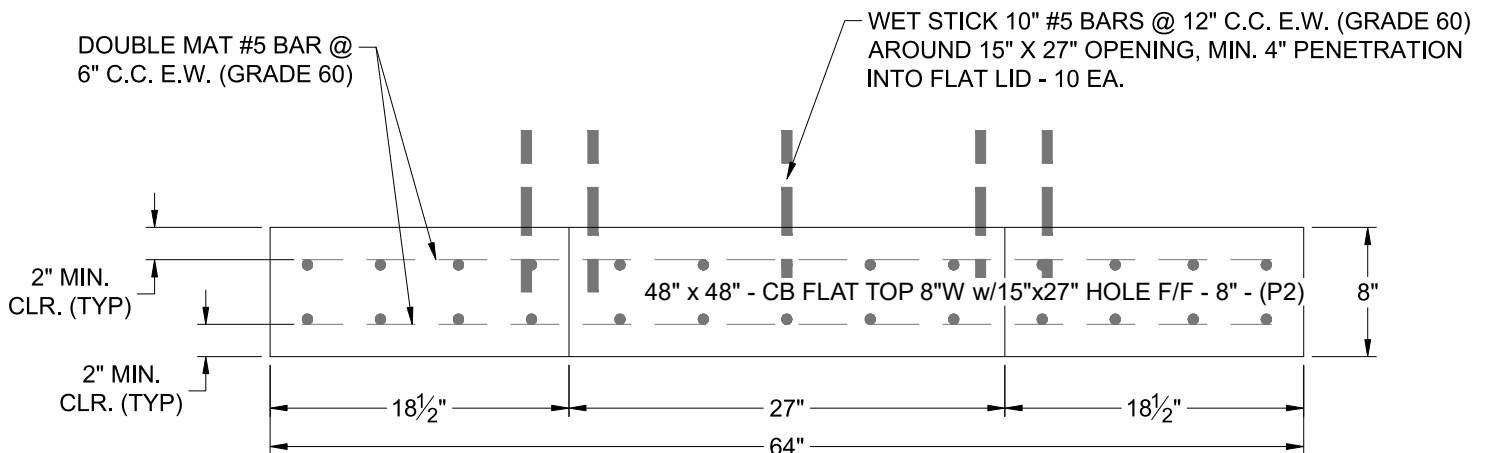
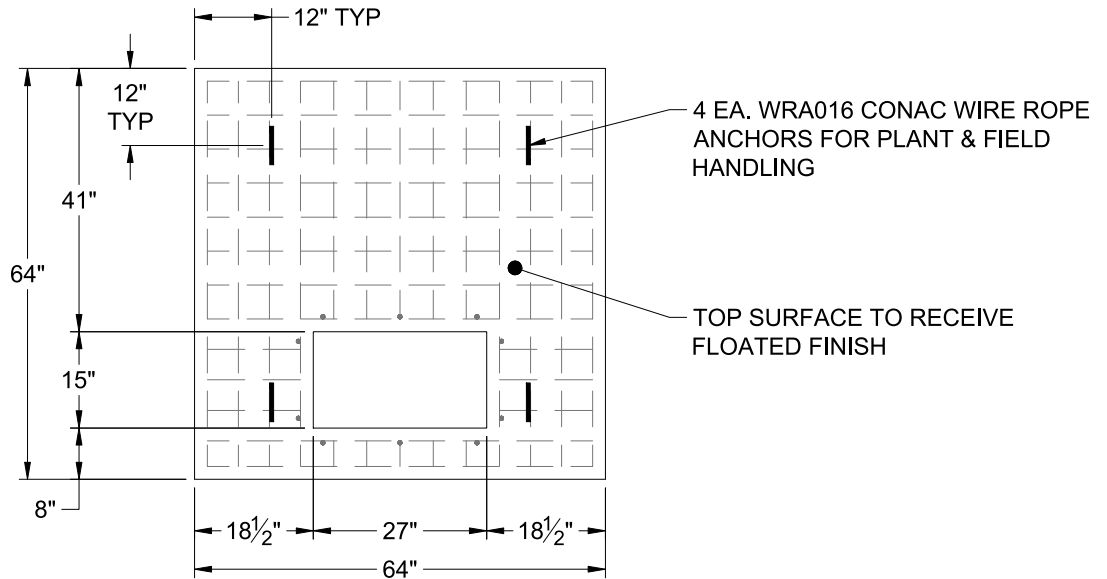
P2 BX048048-08LD08SP

CB FLAT TOP 8"W w/15"x27" HOLE F/F

- P3) 15" x 27" - P.I.P. - BY OTHERS - 8"
- P2) 48" x 48" - CB FLAT TOP 8"W w/15"x27" HOLE F/F - 8"
- P1) 48" x 48" - BOX BASE 8inW, 8inF, Variable Ht F/n - 51"
- 1) 48" x 48" - Conseal CS-102 1.00"
- 1) 15" x 27" - Conseal CS-102 1.00"
- 2) Hole - 40
- 1) Hole - 20
- 1) Hole - 30
- 2) I-Beam Notch n/n - 7"x9"x5"

0 lb
 2478 lb
 7961 lb
 0 lb
 0 lb
 0 lb
 0 lb
 0 lb
 0 lb
 0 lb
 Structure Total: 10439 lb

- Structure Notes:**
1. PER KYTC DBI TY 13G / ASTM C-913 SPECIFICATIONS
 2. CONCRETE: 4,000 PSI AT 28 DAYS
 3. REINFORCEMENT: DOUBLE MAT #5 BAR @ 6" C.C. E.W. (GRADE 60) - 2" MIN. REBAR CLEARANCE (TYP)
 4. HOE KY-230-G FRAME & GRATE SUPPLIED BY OTHERS
 5. LIFTERS: 4 EA. WRA016 CONAC WIRE ROPE ANCHORS FOR PLANT & FIELD HANDLING
 6. TOP SURFACE TO RECEIVE FLOATED FINISH
 7. WET STICK #5 BARS SPACED @ 12" C.C. 6" OUT TOP OF FLAT LID AROUND 15" X 27" OPENING



Coating (Int): Coating (Ext):	Seam Up: Flat Seam Dn: Flat	Wall Thickness: 8"	Height (Ext): 8"	Weight (Net): 2478 lb Volume (Net): 0.63cu.yd
----------------------------------	--------------------------------	--------------------	------------------	--