

Job Name: 25-2290 - AutoZone 9385
 Job Location: Louisville, KY
 Contractor: Cornell Harbison Excavating

Plant: 100
 2/23/2026 10:31:22 AM

Tech: J. Horsley - A
 PC: Jay Ross Jarvis



Structure ID: 1-0

P1 BX4848-08BAVF

BOX BASE 8inW, 8inF, Variable Ht F/n

- P3) 15" x 27" - P.I.P. - BY OTHERS - 8"
- P2) 48" x 48" - CB FLAT TOP 8"W w/15"x27" HOLE F/F - 8"
- P1) 48" x 48" - BOX BASE 8inW, 8inF, Variable Ht F/n - 51"
- 1) 48" x 48" - Conseal CS-102 1.00"
- 1) 15" x 27" - Conseal CS-102 1.00"
- 2) Hole - 40
- 1) Hole - 20
- 1) Hole - 30
- 2) I-Beam Notch n/n - 7"x9"x5"

- Structure Notes:**
1. PER KYTC DBI TY 13G / ASTM C-913 SPECIFICATIONS
 2. CONCRETE: 4,000 PSI AT 28 DAYS
 3. REINFORCEMENT: #5 BAR @ 12" C.C. E.W. (GRADE 60) - 2" MIN. REBAR CLEARANCE (TYP)
 4. NO STORM INVERT
 5. NO STEPS
 6. HOE KY-230-G FRAME & GRATE SUPPLIED BY OTHERS
 7. 7" WIDE X 9" LONG X 5" DEEP SLOTS REQUIRED IN 90° & 270° WALLS FOR W6X9.0 GALVANIZED I-BEAM
 8. OPENINGS FOR INVERTS 4 & 6 WILL BE CONNECTED DUE TO OVERLAP (SEE DETAIL)

0 lb
2478 lb
7961 lb
0 lb
0 lb
0 lb
0 lb
0 lb
0 lb
0 lb
Structure Total: 10439 lb

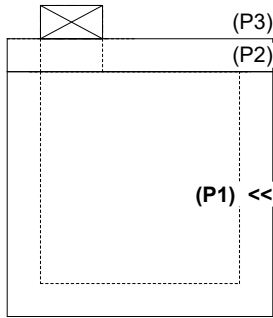
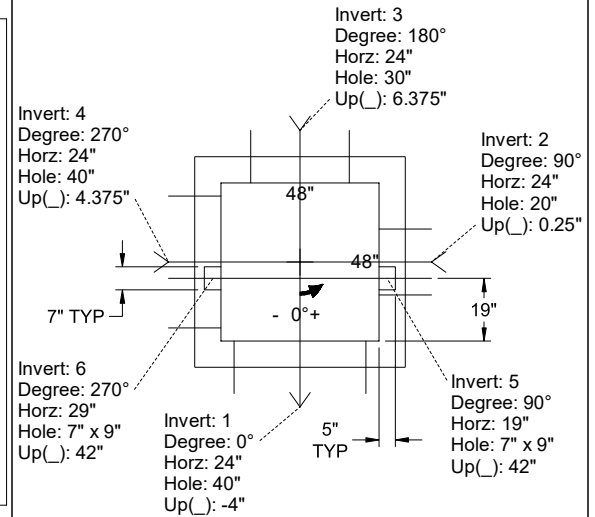
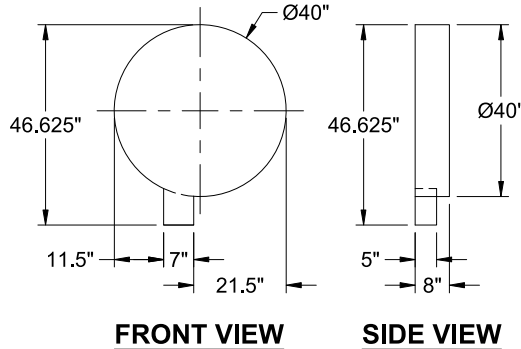
Rim: 453.54' Rim to Invert: 5.56' Slack: 0.716" Sump: 0.996" Step Position:

Position	Elev	Angle	Ext. (cw)	Pipe	Pipe OD	Connector	Hole	Horz Size	Up ()	Offset
Invert 1	447.98'	0°	32"	30" RCP B WALL	37"	Hole 40	40"	40"	-4"	0"
Invert 2	448.25'	90°	32"	12" RCP B WALL	16"	Hole 20	20"	20"	0.25"	0"
Invert 3	448.68'	180°	32"	24" HDPE	27.8"	Hole 30	30"	30"	6.375"	0"
Invert 4	448.68'	270°	32"	30" RCP B WALL	37"	Hole 40	40"	40"	4.375"	0"
Invert 5	451.77'	90°	27"	7" x 9" I-Beam Notch	7" x 9"	I-Beam Notch 7"x9"x5"	7" x 9"	7"	42"	-5"
Invert 6	451.77'	270°	37"	7" x 9" I-Beam Notch	7" x 9"	I-Beam Notch 7"x9"x5"	7" x 9"	7"	42"	5"
Invert 7										
Invert 8										

RIGHT-SIDE UP VIEW (int. dimensions)

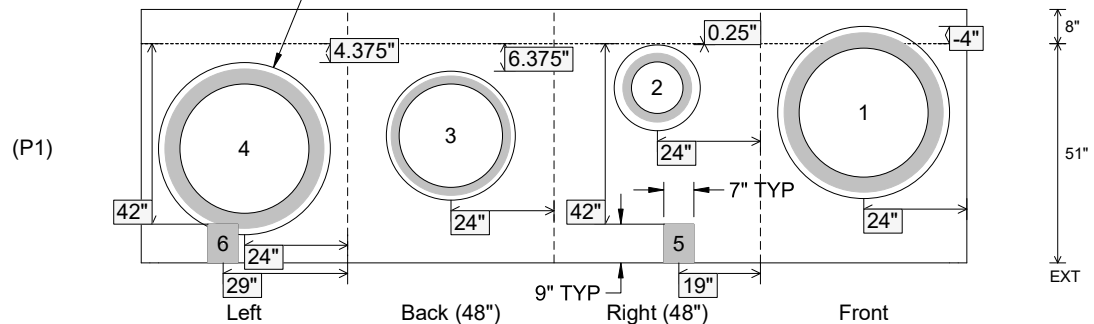
UPSIDE-DOWN VIEW (int. dimensions)

CONNECTION OF OPENINGS FOR INVERTS 4 & 6



INSIDE WALL DIMENSIONS

OPENINGS FOR INVERTS 4 & 6 WILL BE CONNECTED DUE TO OVERLAP (SEE DETAIL ABOVE)



Coating (Int):
 Coating (Ext):

Seam Up: Flat
 Seam Dn: n/a

Wall Thickness: 8"
 Floor Height: 8"

Height (Int): 51"
 Height (Ext): 59"

Weight (Net): 7961 lb
 Volume (Net): 2.03cu.yd