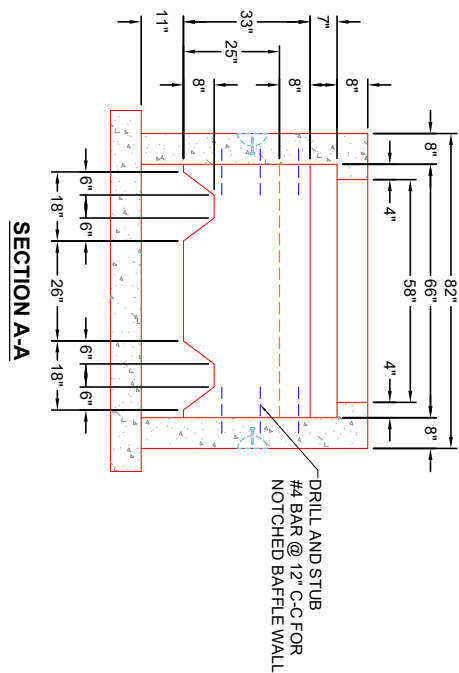
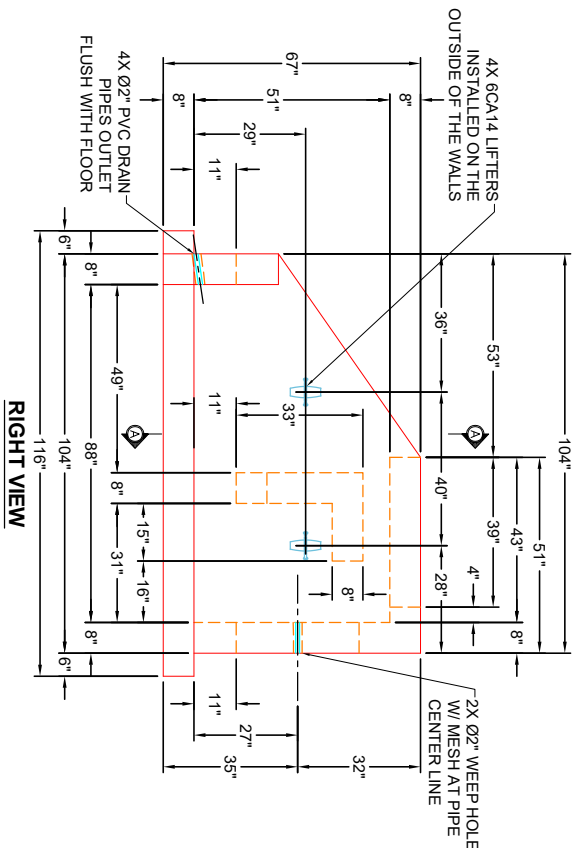
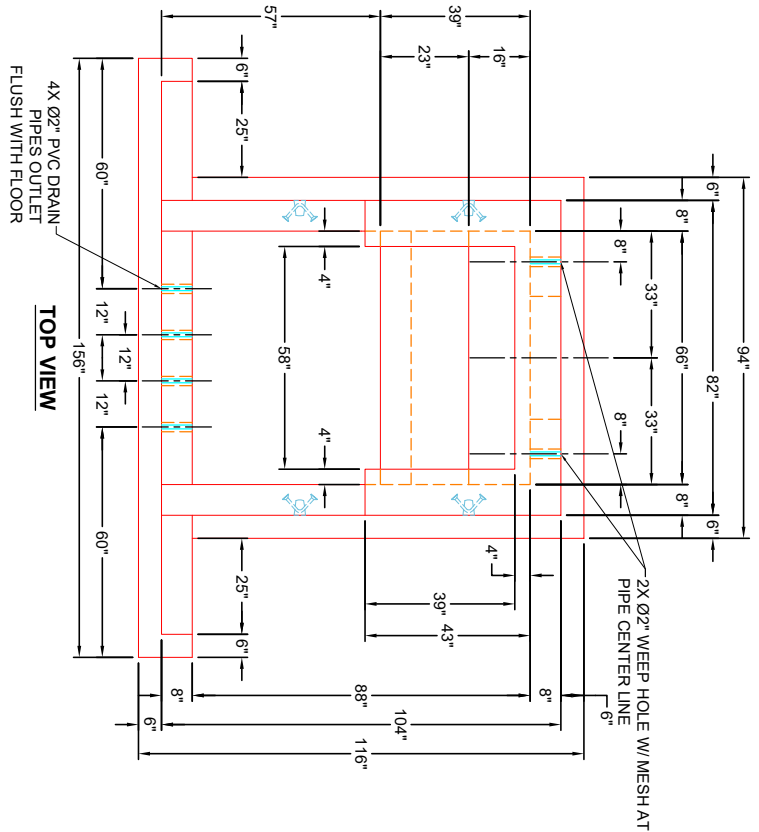
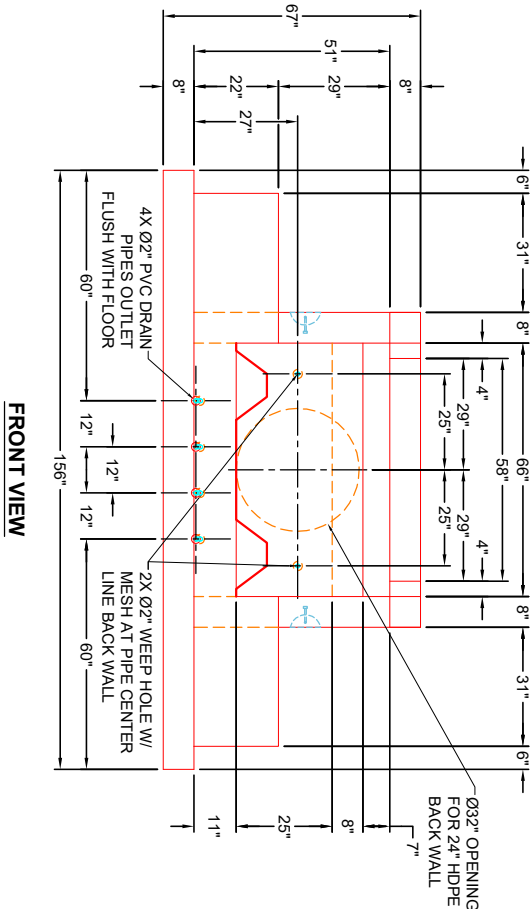




**Structure ID: Stilling Headwall**

**P1 HWCUSTOM**

**24" - STILLING HEADWALL**



- NOTES:**
1. MANUFACTURED TO ASTM C-913 (LATEST REVISION).
  2. CONCRETE: 5,000 PSI AT 28 DAYS.
  3. REINFORCING: #5 BAR @ 12" C/C E.W. (GRADE 60).
  4. WEIGHTS: 19,096 LBS