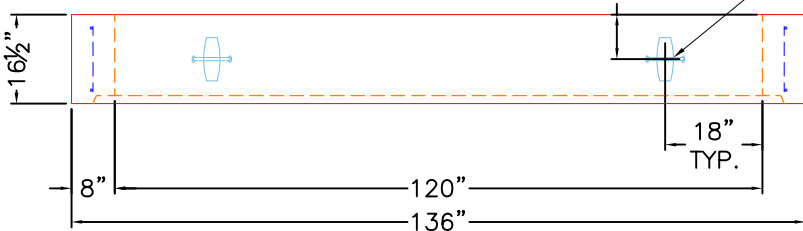


TOP VIEW

EXTERNAL COATING OF CS-55

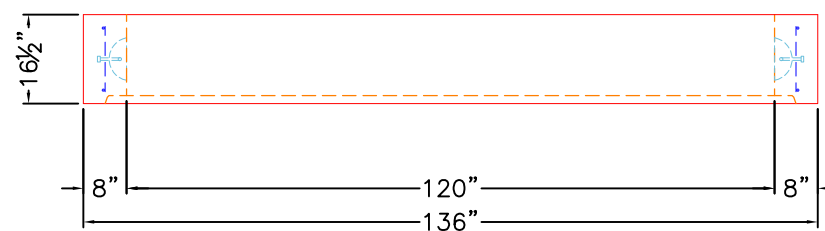
GENERAL NOTES:

1. MANUFACTURED TO ASTM C-913 (LATEST REVISION).
2. CONCRETE: 5,000 PSI AT 28 DAYS.
3. REINFORCING: PER ASTM A615 (GRADE 60)
WALLS - #6 BAR @ 6" C-C E.W.
4. WEIGHT: 5,671 LBS
5. CASTING: JR HOE MC-780 PROVIDED BY ICAST.
6. EXTERNAL COATING OF CS-55 PROVIDED BY ICAST.
7. 9'-0" AIM TWISTED HOOK LADDER PROVIDED BY ICAST.
8. FLOOR SLOPE TO DRAIN BY ICAST.
9. ALL SECTION JOINTS TO BE SEALED W/ CONSEAL CS-102 BUTYL.




FRONT VIEW

4 EA. 5CA14 CONAC ANCHORS CAST IN AS SHOWN.



RIGHT VIEW

PRODUCTION WORK ORDER		PRODUCT I.D.: BX120120-08W-RSVF	DESCRIPTION: 120" X 120" X 16 1/2" TALL VAULT RISER	
	QUALITY CONTROL CHECKLIST	PRODUCT VIEW: RIGHT SIDE UP	CUSTOMER: THE STATE GROUP INDUSTRIAL (USA) LIMITED	
	<input type="checkbox"/> ALL DIMENSIONS CORRECT.	PLANT: BEAVER DAM, KY.	PROJECT: KYMEA CENTER ELECTRICAL MANHOLES	
	<input type="checkbox"/> LIFTERS INSTALLED.	WEIGHT: 5,671 LBS.	STRUCTURE: ELECTRICAL MANHOLE 4	
	<input type="checkbox"/> OPENING CENTERED.	TOP SECTION JOINT: N/A	ORDER NO: 25-2219	
	<input type="checkbox"/> REINFORCING CORRECT.	BASE SECTION JOINT: GROOVE	PC: A. CHAMBERS	DRAWING: J. COPPAGE
<input type="checkbox"/> SURFACE QUALITY ACCEPTABLE.	QC CHECK INITIALS:	DATE: 10/28/25	SCALE: NTS	PG. 1 of 1
<input type="checkbox"/> EDGES CHAMFERED.				
<input type="checkbox"/> ALL PATCHWORK ACCEPTABLE.				