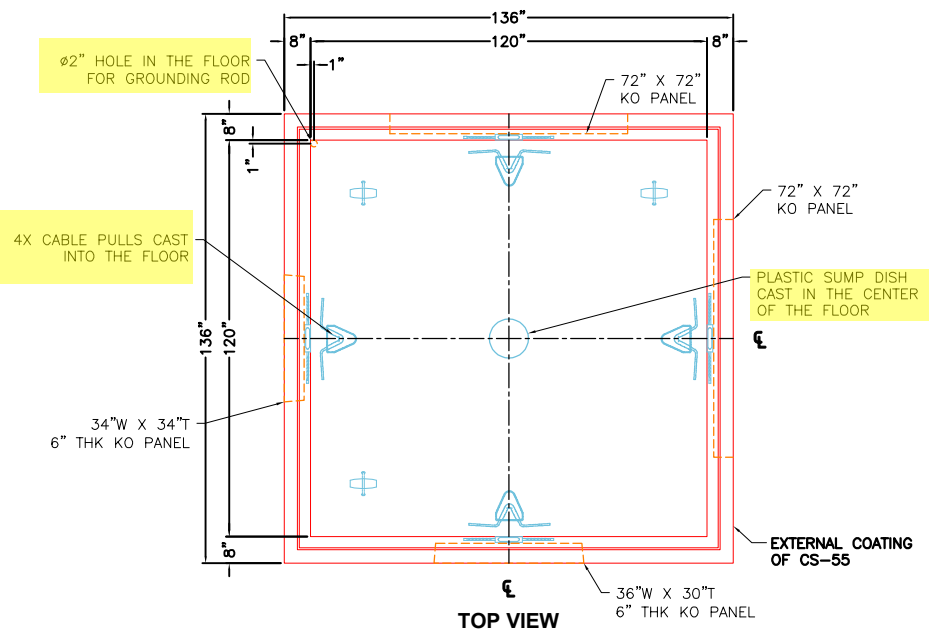
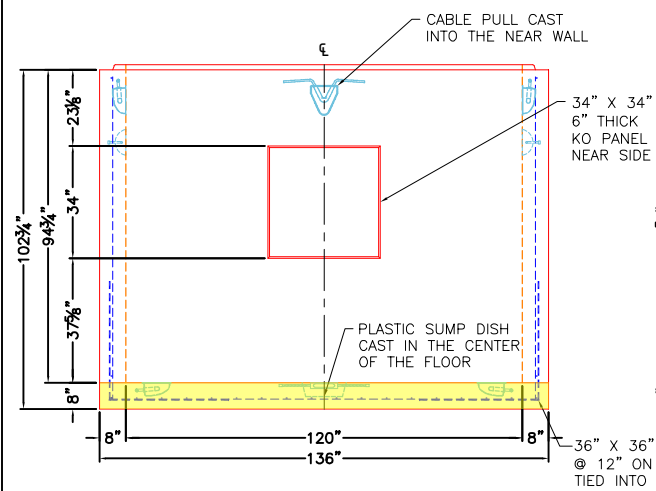


**FIRST POUR DRAWING FLOOR**

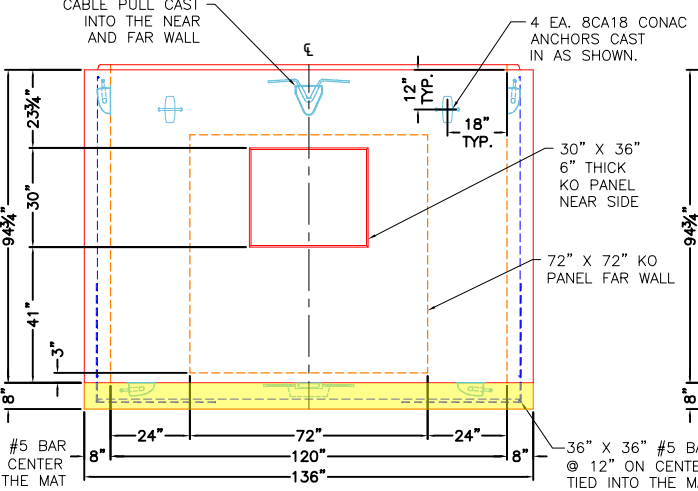


- GENERAL NOTES:**
1. MANUFACTURED TO ASTM C-913 (LATEST REVISION).
  2. CONCRETE: 5,000 PSI AT 28 DAYS.
  3. REINFORCING: PER ASTM A615 (GRADE 60)  
WALLS - #6 BAR @ 6" C-C E.W.  
FLOOR - #5 BAR @ 10" C-C E.W.
  4. WEIGHT:  
FIRST POUR = 12,416 LBS  
SECOND POUR = 32,566 LBS  
THIRD POUR = 2,415 LBS  
TOTAL WEIGHT = 47,397 LBS
  5. CASTING: JR HOE MC-780 PROVIDED BY ICAST.
  6. EXTERNAL COATING OF CS-55 PROVIDED BY ICAST.
  7. 9'-0" AIM TWISTED HOOK LADDER PROVIDED BY ICAST.
  8. FLOOR SLOPE TO DRAIN BY ICAST.
  9. ALL SECTION JOINTS TO BE SEALED W/ CONSEAL CS-102 BUTYL.

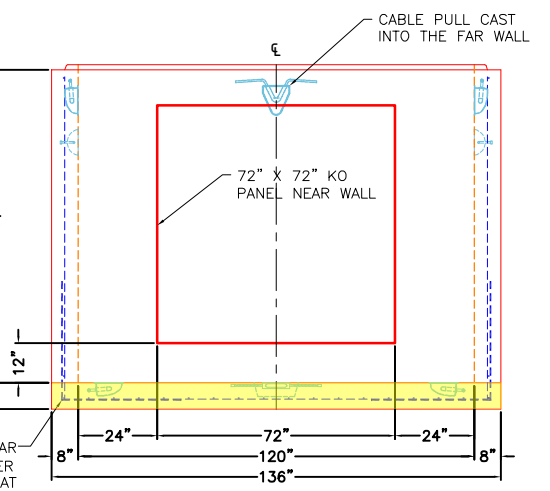
**TOP VIEW**



**LEFT VIEW**



**FRONT VIEW**



**RIGHT VIEW**

**PRODUCTION WORK ORDER**

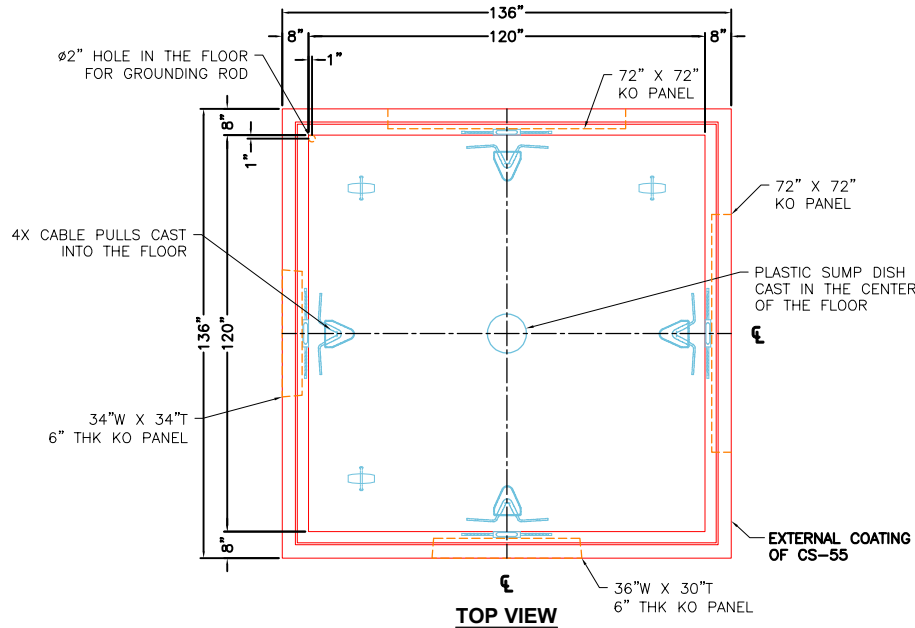
PRODUCT I.D.: BX120120-08BAVF	DESCRIPTION: 120" X 120" X 94 3/4" TALL VAULT BASE
PRODUCT VIEW: RIGHT SIDE UP	CUSTOMER: THE STATE GROUP INDUSTRIAL (USA) LIMITED
PLANT: BEAVER DAM, KY.	PROJECT: KYMEA CENTER ELECTRICAL MANHOLES
WEIGHT: 47,397 LBS.	STRUCTURE: ELECTRICAL MANHOLE 4
TOP SECTION JOINT: TONGUE	ORDER NO: 25-2219
BASE SECTION JOINT: N/A	PC: A. CHAMBERS
QC CHECK INITIALS:	DRAWING: J. COPPAGE
	DATE: 10/28/25
	SCALE: NTS
	PG. 1 of 3



**QUALITY CONTROL CHECKLIST**

- ALL DIMENSIONS CORRECT.
- LIFTERS INSTALLED.
- OPENING CENTERED.
- REINFORCING CORRECT.
- SURFACE QUALITY ACCEPTABLE.
- EDGES CHAMFERED.
- ALL PATCHWORK ACCEPTABLE.

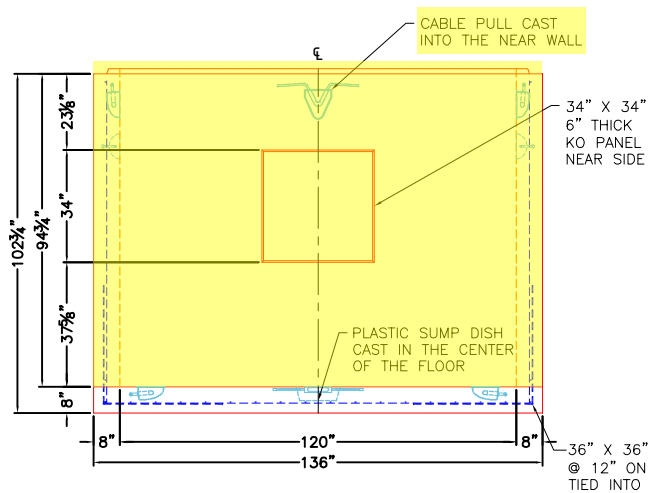
**SECOND POUR DRAWING  
WALLS**



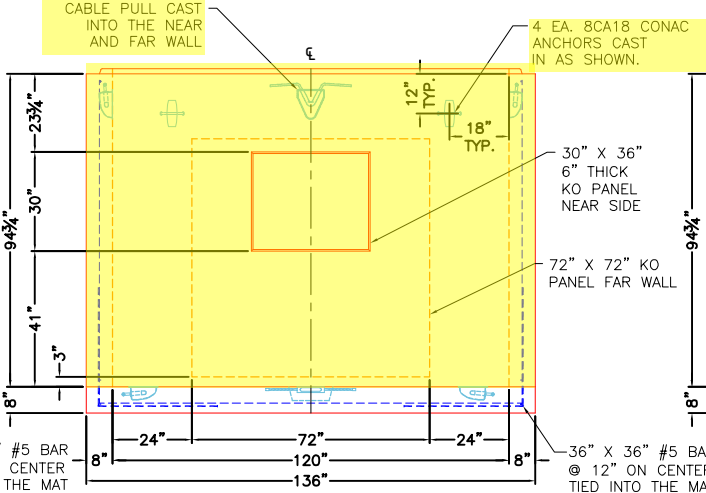
**TOP VIEW**

**GENERAL NOTES:**

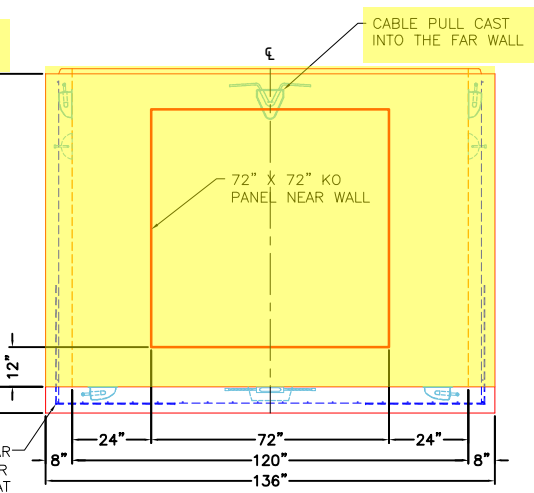
1. MANUFACTURED TO ASTM C-913 (LATEST REVISION).
2. CONCRETE: 5,000 PSI AT 28 DAYS.
3. REINFORCING: PER ASTM A615 (GRADE 60)  
WALLS - #6 BAR @ 6" C-C E.W.  
FLOOR - #5 BAR @ 10" C-C E.W.
4. WEIGHT:  
FIRST POUR = 12,416 LBS  
SECOND POUR = 32,566 LBS  
THIRD POUR = 2,415 LBS  
TOTAL WEIGHT = 47,397 LBS
5. CASTING: JR HOE MC-780 PROVIDED BY ICAT.
6. EXTERNAL COATING OF CS-55 PROVIDED BY ICAT.
7. 9'-0" AIM TWISTED HOOK LADDER PROVIDED BY ICAT.
8. FLOOR SLOPE TO DRAIN BY ICAT.
9. ALL SECTION JOINTS TO BE SEALED W/ CONSEAL CS-102 BUTYL.



**LEFT VIEW**



**FRONT VIEW**



**RIGHT VIEW**

**PRODUCTION WORK ORDER**

PRODUCT I.D.: BX120120-08BAVF

DESCRIPTION: 120" X 120" X 94 3/4" TALL VAULT BASE



**QUALITY CONTROL CHECKLIST**

- ALL DIMENSIONS CORRECT.
- LIFTERS INSTALLED.
- OPENING CENTERED.
- REINFORCING CORRECT.
- SURFACE QUALITY ACCEPTABLE.
- EDGES CHAMFERED.
- ALL PATCHWORK ACCEPTABLE.

PRODUCT VIEW: RIGHT SIDE UP

CUSTOMER: THE STATE GROUP INDUSTRIAL (USA) LIMITED

PLANT: BEAVER DAM, KY.

PROJECT: KYMEA CENTER ELECTRICAL MANHOLES

WEIGHT: 47,397 LBS.

STRUCTURE: ELECTRICAL MANHOLE 4

TOP SECTION JOINT: TONGUE

ORDER NO: 25-2219

BASE SECTION JOINT: N/A

PC: A. CHAMBERS

DRAWING: J. COPPAGE

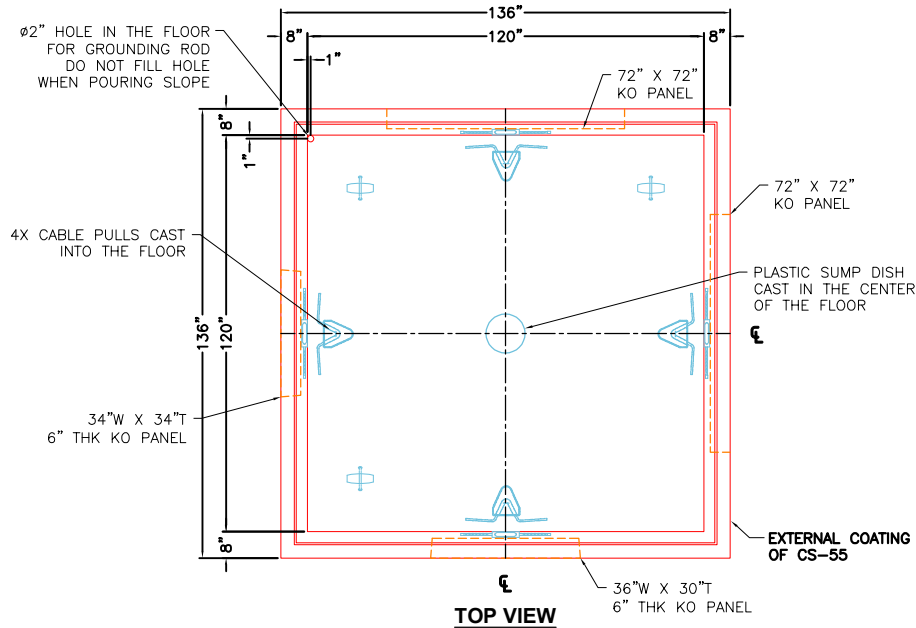
QC CHECK INITIALS:

DATE: 10/28/25

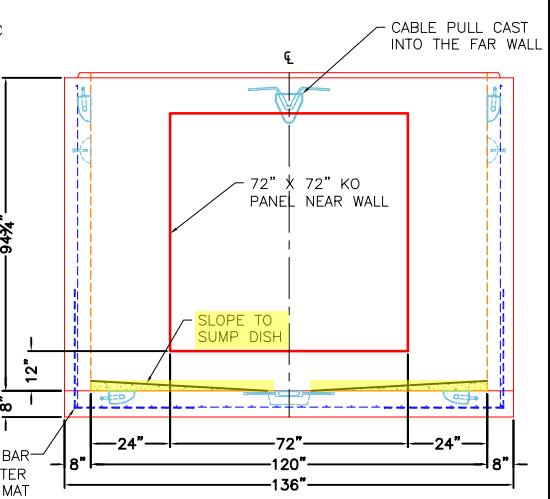
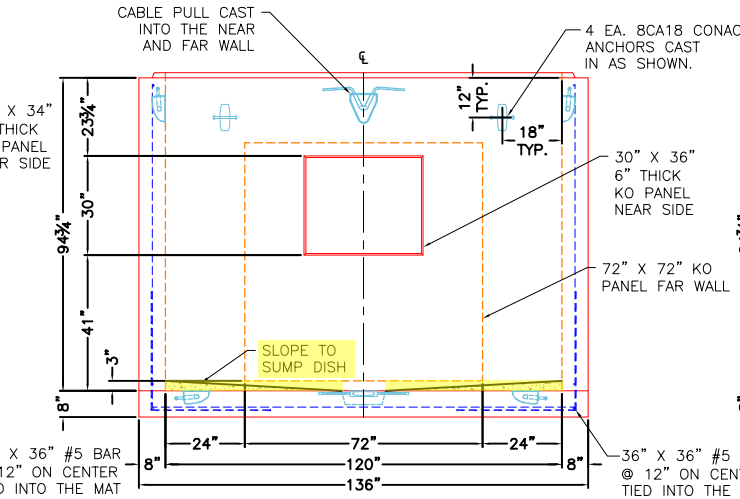
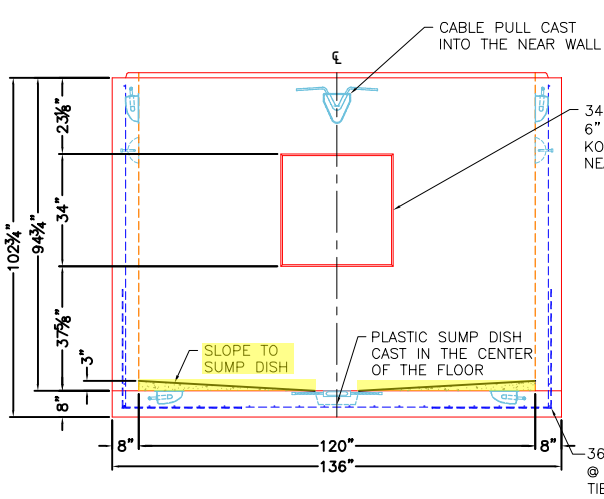
SCALE: NTS


PG. 1 of 3

**THIRD POUR DRAWING**  
SLOPE TO SUMP PAN



- GENERAL NOTES:**
1. MANUFACTURED TO ASTM C-913 (LATEST REVISION).
  2. CONCRETE: 5,000 PSI AT 28 DAYS.
  3. REINFORCING: PER ASTM A615 (GRADE 60)  
WALLS - #6 BAR @ 6" C-C E.W.  
FLOOR - #5 BAR @ 10" C-C E.W.
  4. WEIGHT:  
FIRST POUR = 12,416 LBS  
SECOND POUR = 32,566 LBS  
THIRD POUR = 2,415 LBS  
TOTAL WEIGHT = 47,397 LBS
  5. CASTING: JR HOE MC-780 PROVIDED BY ICAST.
  6. EXTERNAL COATING OF CS-55 PROVIDED BY ICAST.
  7. 9'-0" AIM TWISTED HOOK LADDER PROVIDED BY ICAST.
  8. FLOOR SLOPE TO DRAIN BY ICAST.
  9. ALL SECTION JOINTS TO BE SEALED W/ CONSEAL CS-102 BUTYL.



<p>PRODUCTION WORK ORDER</p> 		<p>PRODUCT I.D.: BX120120-08BAVF</p> <p>PRODUCT VIEW: RIGHT SIDE UP</p> <p>PLANT: BEAVER DAM, KY.</p> <p>WEIGHT: 47,397 LBS.</p> <p>TOP SECTION JOINT: TONGUE</p> <p>BASE SECTION JOINT: N/A</p> <p>QC CHECK INITIALS:</p>	<p>DESCRIPTION: 120" X 120" X 94 3/4" TALL VAULT BASE</p> <p>CUSTOMER: THE STATE GROUP INDUSTRIAL (USA) LIMITED</p> <p>PROJECT: KYMEA CENTER ELECTRICAL MANHOLES</p> <p>STRUCTURE: ELECTRICAL MANHOLE 4</p> <p>ORDER NO: 25-2219</p> <p>PC: A. CHAMBERS      DRAWING: J. COPPAGE</p> <p>DATE: 10/28/25      SCALE: NTS      PG. 1 of 3</p>
<p>QUALITY CONTROL CHECKLIST</p> <ul style="list-style-type: none"> <li><input type="checkbox"/> ALL DIMENSIONS CORRECT.</li> <li><input type="checkbox"/> LIFTERS INSTALLED.</li> <li><input type="checkbox"/> OPENING CENTERED.</li> <li><input type="checkbox"/> REINFORCING CORRECT.</li> <li><input type="checkbox"/> SURFACE QUALITY ACCEPTABLE.</li> <li><input type="checkbox"/> EDGES CHAMFERED.</li> <li><input type="checkbox"/> ALL PATCHWORK ACCEPTABLE.</li> </ul>			