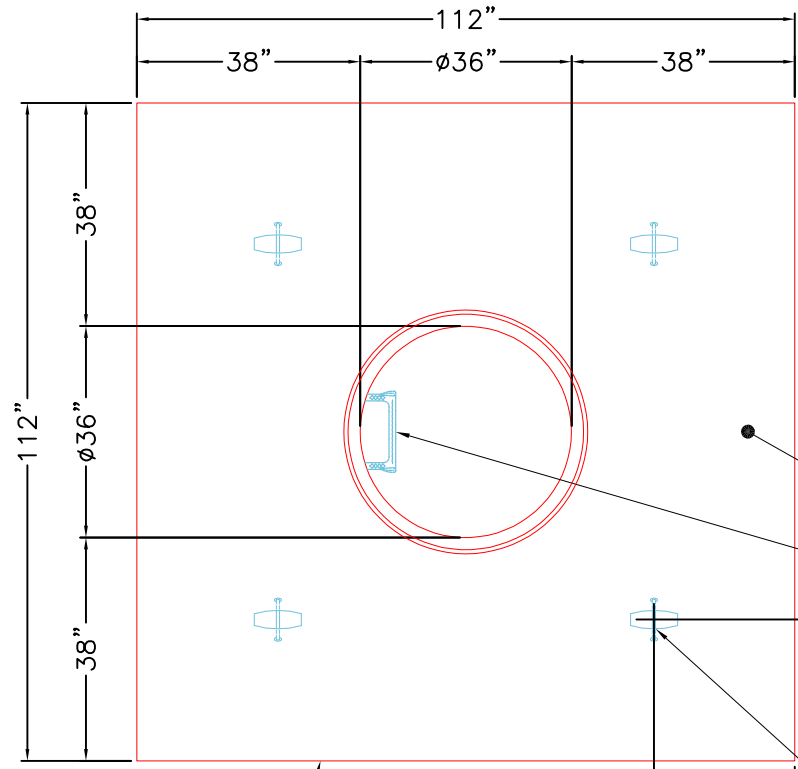
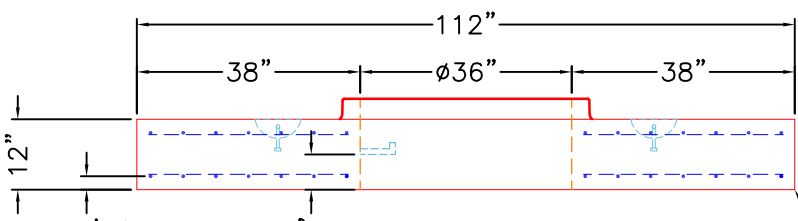


**GENERAL NOTES:**

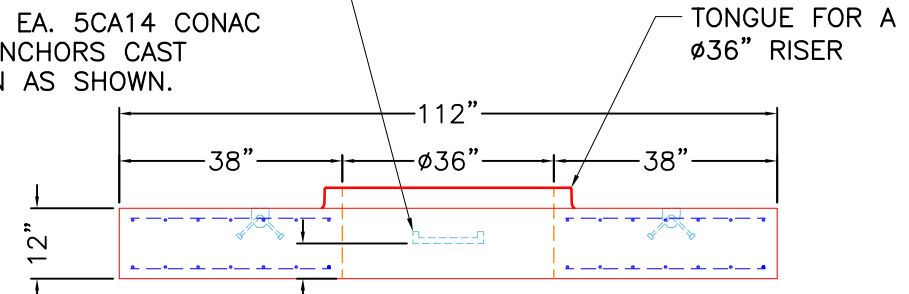
1. MANUFACTURED TO ASTM C-913 (LATEST REVISION).
2. CONCRETE: 5,000 PSI AT 28 DAYS.
3. REINFORCING: PER ASTM A615 (GRADE 60)  
TOP MAT: #5 BAR @ 6" E.W. O.C.  
BTM MAT: #4 BAR @ 12" E.W. O.C.
4. WEIGHT: 11,606 LBS.
5. AIM STANDARD STEEL STEP FOR 36" DIAMETER STRUCTURES PROVIDED BY ICAST.
6. STRUCTURE TO GET AN EXTERNAL COATING OF CS-55 PROVIDED BY ICAST.



**TOP VIEW**



**FRONT VIEW**



**RIGHT VIEW**

FLOAT FINISH

AIM STANDARD STEEL STEP FOR 36" DIAMETER STRUCTURES

18" TYP. AIM STANDARD STEEL STEP FOR 36" DIAMETER STRUCTURES

4 EA. 5CA14 CONAC ANCHORS CAST IN AS SHOWN.

TONGUE FOR A 36" RISER

EXTERNAL COATING OF CS-55

**PRODUCTION WORK ORDER**

PRODUCT I.D.: BX096096-12LD08W

DESCRIPTION: TOP SLAB FOR 8'-0" X 8'-0" VAULT



**QUALITY CONTROL CHECKLIST**

- ALL DIMENSIONS CORRECT.
- LIFTERS INSTALLED.
- OPENING CENTERED.
- REINFORCING CORRECT.
- SURFACE QUALITY ACCEPTABLE.
- EDGES CHAMFERED.
- ALL PATCHWORK ACCEPTABLE.

PRODUCT VIEW: RIGHT SIDE UP

CUSTOMER: THE STATE GROUP INDUSTRIAL (USA) LIMITED

PLANT: BEAVER DAM, KY.

PROJECT: KYMEA CENTER ELECTRICAL MANHOLES

WEIGHT: 11,606 LBS.

STRUCTURE: ELECTRICAL MANHOLE 3

TOP SECTION JOINT: TONGUE 36"

ORDER NO: 25-2219

BASE SECTION JOINT: N/A

PC: A. CHAMBERS

DRAWING: J. COPPAGE

QC CHECK INITIALS:

DATE: 10/28/25

SCALE: NTS

PG. 1 of 1