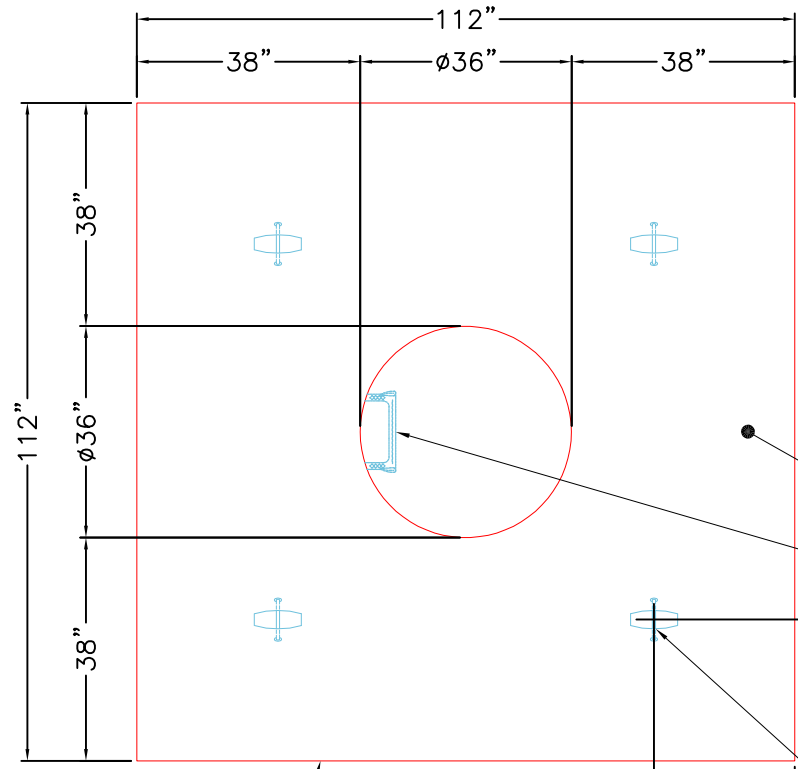


**GENERAL NOTES:**

1. MANUFACTURED TO ASTM C-913 (LATEST REVISION).
2. CONCRETE: 5,000 PSI AT 28 DAYS.
3. REINFORCING: PER ASTM A615 (GRADE 60)  
TOP MAT: #5 BAR @ 6" E.W. O.C.  
BTM MAT: #4 BAR @ 12" E.W. O.C.
4. WEIGHT: 11,606 LBS.
5. AIM STANDARD STEEL STEP FOR 36" DIAMETER STRUCTURES PROVIDED BY ICAST.
6. STRUCTURE TO GET AN EXTERNAL COATING OF CS-55 PROVIDED BY ICAST.



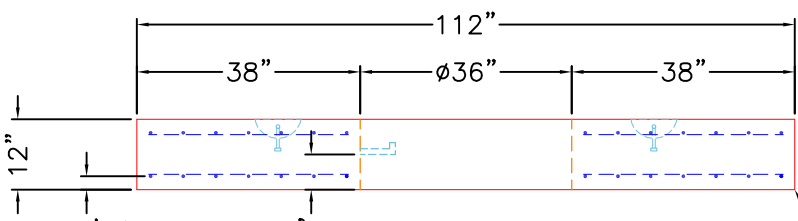
FLOAT FINISH

AIM STANDARD STEEL STEP FOR 36" DIAMETER STRUCTURES

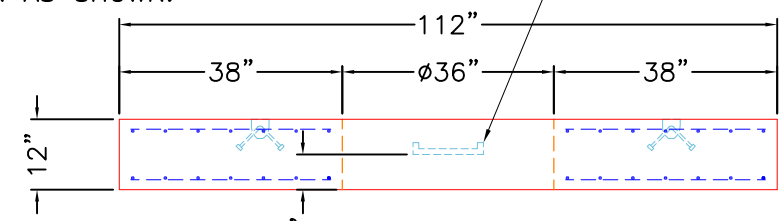
4 EA. 5CA14 CONAC ANCHORS CAST IN AS SHOWN.

EXTERNAL COATING OF CS-55

**TOP VIEW**




**FRONT VIEW**



**RIGHT VIEW**

EXTERNAL COATING OF CS-55

AIM STANDARD STEEL STEP FOR 36" DIAMETER STRUCTURES

<p>PRODUCTION WORK ORDER</p>		<p>PRODUCT I.D.: BX096096-12LD08W</p>	<p>DESCRIPTION: TOP SLAB FOR 8'-0" X 8'-0" VAULT</p>		
	<p>QUALITY CONTROL CHECKLIST</p> <ul style="list-style-type: none"> <li><input type="checkbox"/> ALL DIMENSIONS CORRECT.</li> <li><input type="checkbox"/> LIFTERS INSTALLED.</li> <li><input type="checkbox"/> OPENING CENTERED.</li> <li><input type="checkbox"/> REINFORCING CORRECT.</li> <li><input type="checkbox"/> SURFACE QUALITY ACCEPTABLE.</li> <li><input type="checkbox"/> EDGES CHAMFERED.</li> <li><input type="checkbox"/> ALL PATCHWORK ACCEPTABLE.</li> </ul>		<p>PRODUCT VIEW: RIGHT SIDE UP</p>		<p>CUSTOMER: THE STATE GROUP INDUSTRIAL (USA) LIMITED</p>
			<p>PLANT: BEAVER DAM, KY.</p>		<p>PROJECT: KYMEA CENTER ELECTRICAL MANHOLES</p>
			<p>WEIGHT: 11,606 LBS.</p>		<p>STRUCTURE: ELECTRICAL MANHOLE 2</p>
			<p>TOP SECTION JOINT: N/A</p>		<p>ORDER NO: 25-2219</p>
			<p>BASE SECTION JOINT: N/A</p>		<p>PC: A. CHAMBERS      DRAWING: J. COPPAGE</p>
			<p>QC CHECK INITIALS:</p>		<p>DATE: 10/28/25      SCALE: NTS      PG. 1 of 1</p>