

**FIRST POUR DRAWING FLOOR**

ø2" HOLE IN THE FLOOR FOR GROUNDING ROD

4X CABLE PULLS CAST INTO THE FLOOR

18" X 24" KO PANEL

60" X 60" KO PANEL

PLASTIC SUMP DISH CAST IN THE CENTER OF THE FLOOR

EXTERNAL COATING OF CS-55

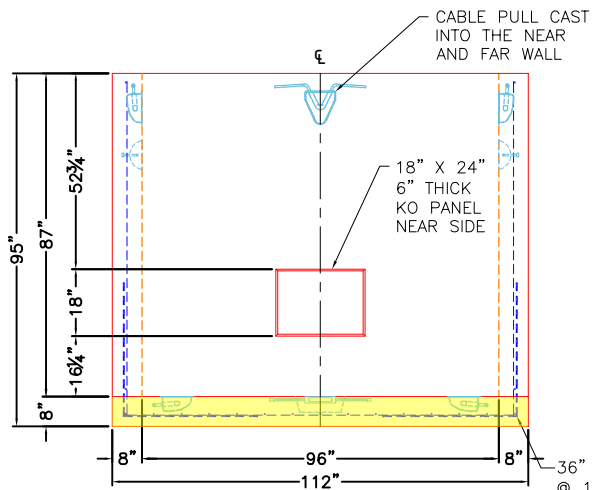
60" X 60" KO PANEL

**TOP VIEW**

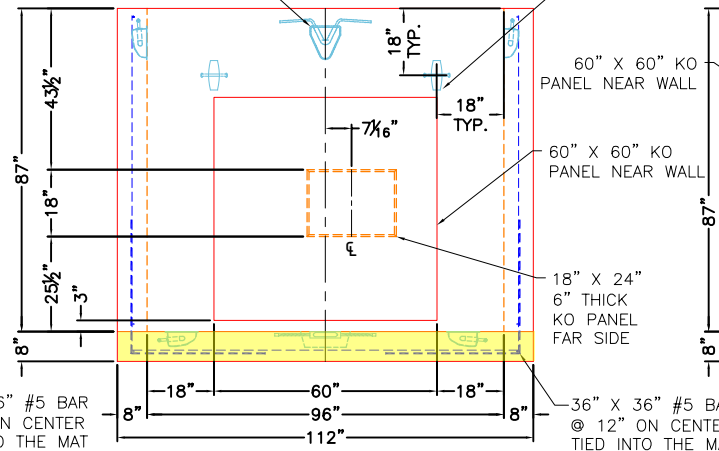
CABLE PULL CAST INTO THE NEAR AND FAR WALL

4 EA. 8CA18 CONAC ANCHORS CAST IN AS SHOWN.

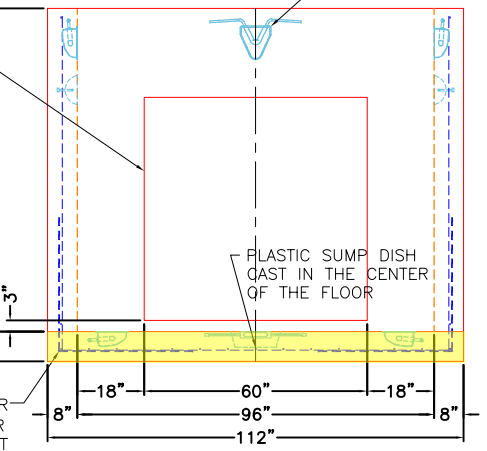
CABLE PULL CAST INTO THE NEAR AND FAR WALL



**LEFT VIEW**



**FRONT VIEW**



**RIGHT VIEW**

**GENERAL NOTES:**

1. MANUFACTURED TO ASTM C-913 (LATEST REVISION).
2. CONCRETE: 5,000 PSI AT 28 DAYS.
3. REINFORCING: PER ASTM A615 (GRADE 60)  
WALLS - #5 BAR @ 6" C-C E.W.  
FLOOR - #5 BAR @ 10" C-C E.W.
4. WEIGHT:  
**FIRST POUR = 8,421 LBS**  
SECOND POUR = 25,793 LBS  
THIRD POUR = 1,498 LBS  
TOTAL WEIGHT = 34,214 LBS
5. CASTING: JR HOE MC-780 PROVIDED BY ICAST.
6. EXTERNAL COATING OF CS-55 PROVIDED BY ICAST.
7. 7'-0" AIM TWISTED HOOK LADDER PROVIDED BY ICAST.
8. FLOOR SLOPE TO DRAIN BY ICAST.
9. ALL SECTION JOINTS TO BE SEALED W/ CONSEAL CS-102 BUTYL.

**PRODUCTION WORK ORDER**

PRODUCT I.D.: BX9696-08BA-VH

DESCRIPTION: 96" X 96" X 87" TALL VAULT BASE



**QUALITY CONTROL CHECKLIST**

- ALL DIMENSIONS CORRECT.
- LIFTERS INSTALLED.
- OPENING CENTERED.
- REINFORCING CORRECT.
- SURFACE QUALITY ACCEPTABLE.
- EDGES CHAMFERED.
- ALL PATCHWORK ACCEPTABLE.

PRODUCT VIEW: RIGHT SIDE UP

CUSTOMER: THE STATE GROUP INDUSTRIAL (USA) LIMITED

PLANT: BEAVER DAM, KY.

PROJECT: KYMEA CENTER ELECTRICAL MANHOLES

WEIGHT: 34,214 LBS.

STRUCTURE: ELECTRICAL MANHOLE 2

TOP SECTION JOINT: N/A

ORDER NO: 25-2219

BASE SECTION JOINT: N/A

PC: A. CHAMBERS

DRAWING: J. COPPAGE

QC CHECK INITIALS:

DATE: 10/28/25

SCALE: NTS

PG. 1 of 3

## SECOND POUR DRAWING WALLS

Ø2" HOLE IN THE FLOOR  
FOR GROUNDING ROD

4X CABLE PULLS CAST  
INTO THE FLOOR

18" X 24"  
KO PANEL

60" X 60"  
KO PANEL

PLASTIC SUMP DISH  
CAST IN THE CENTER  
OF THE FLOOR

EXTERNAL COATING  
OF CS-55

60" X 60"  
KO PANEL

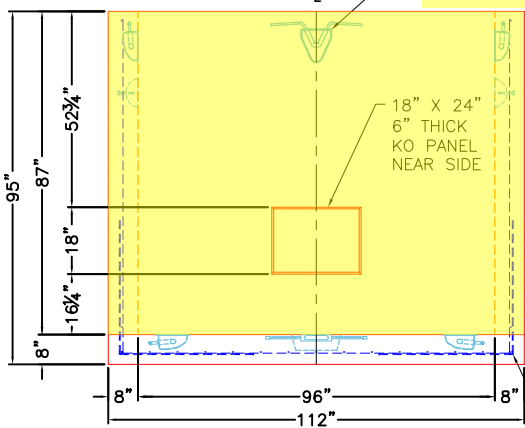
### TOP VIEW

CABLE PULL CAST  
INTO THE NEAR  
AND FAR WALL

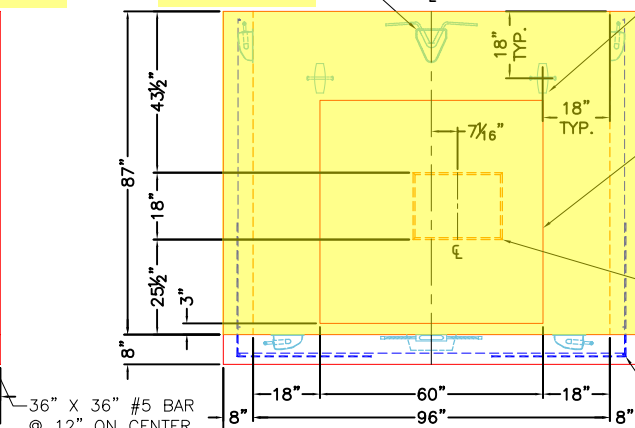
CABLE PULL CAST  
INTO THE NEAR  
AND FAR WALL

4 EA. 8CA18 CONAC  
ANCHORS CAST  
IN AS SHOWN.

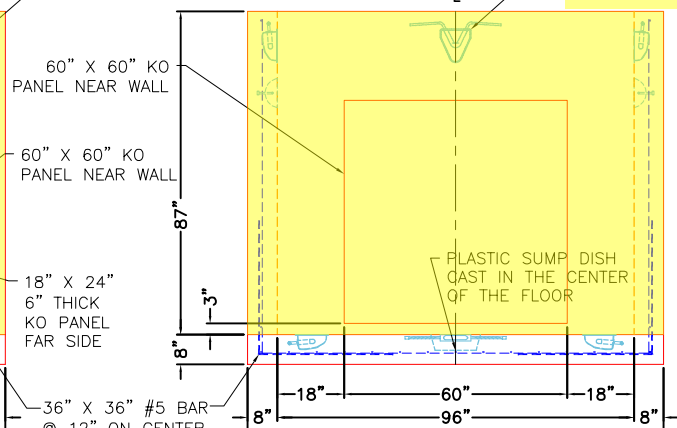
CABLE PULL CAST  
INTO THE NEAR  
AND FAR WALL



### LEFT VIEW



### FRONT VIEW



### RIGHT VIEW

### GENERAL NOTES:

1. MANUFACTURED TO ASTM C-913 (LATEST REVISION).
2. CONCRETE: 5,000 PSI AT 28 DAYS.
3. REINFORCING: PER ASTM A615 (GRADE 60)  
WALLS - #5 BAR @ 6" C-C E.W.  
FLOOR - #5 BAR @ 10" C-C E.W.
4. WEIGHT:  
FIRST POUR = 8,421 LBS  
**SECOND POUR = 25,793 LBS**  
THIRD POUR = 1,498 LBS  
TOTAL WEIGHT = 34,214 LBS
5. CASTING: JR HOE MC-780 PROVIDED BY ICAST.
6. EXTERNAL COATING OF CS-55 PROVIDED BY ICAST.
7. 7'-0" AIM TWISTED HOOK LADDER PROVIDED BY ICAST.
8. FLOOR SLOPE TO DRAIN BY ICAST.
9. ALL SECTION JOINTS TO BE SEALED W/ CONSEAL CS-102 BUTYL.

### PRODUCTION WORK ORDER

PRODUCT I.D.: BX9696-08BA-VH

DESCRIPTION: 96" X 96" X 87" TALL VAULT BASE



#### QUALITY CONTROL CHECKLIST

- ALL DIMENSIONS CORRECT.
- LIFTERS INSTALLED.
- OPENING CENTERED.
- REINFORCING CORRECT.
- SURFACE QUALITY ACCEPTABLE.
- EDGES CHAMFERED.
- ALL PATCHWORK ACCEPTABLE.

PRODUCT VIEW: RIGHT SIDE UP

CUSTOMER: THE STATE GROUP INDUSTRIAL (USA) LIMITED

PLANT: BEAVER DAM, KY.

PROJECT: KYMEA CENTER ELECTRICAL MANHOLES

WEIGHT: 34,214 LBS.

STRUCTURE: ELECTRICAL MANHOLE 2

TOP SECTION JOINT: N/A

ORDER NO: 25-2219

BASE SECTION JOINT: N/A

PC: A. CHAMBERS

DRAWING: J. COPPAGE

QC CHECK INITIALS:

DATE: 10/28/25

SCALE: NTS

PG. 2 of 3

**THIRD POUR DRAWING**  
**SLOPE TO SUMP PAN**

Ø2" HOLE IN THE FLOOR FOR GROUNDING ROD  
DO NOT FILL HOLE WHEN POURING SLOPE

4X CABLE PULLS CAST INTO THE FLOOR

18" X 24" KO PANEL

112" 96" 8" 8" 1" 7 7/8" 18" X 24" KO PANEL

60" X 60" KO PANEL

PLASTIC SUMP DISH CAST IN THE CENTER OF THE FLOOR

EXTERNAL COATING OF CS-55

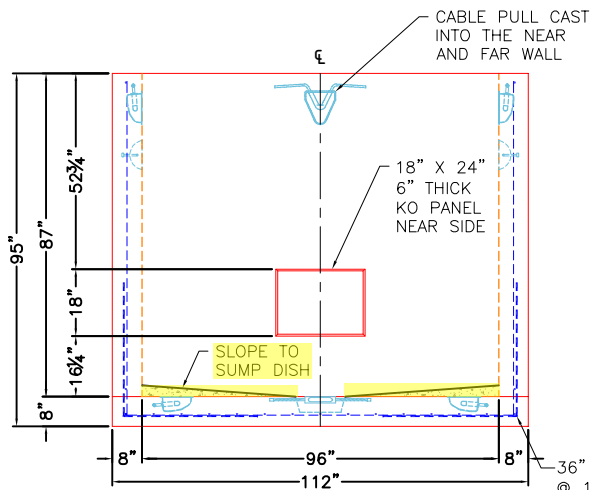
60" X 60" KO PANEL

**TOP VIEW**

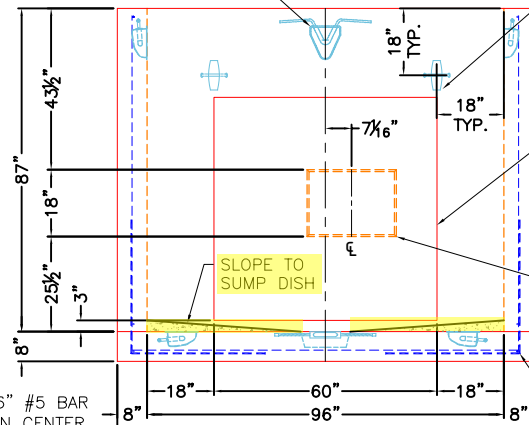
CABLE PULL CAST INTO THE NEAR AND FAR WALL

4 EA. 8CA18 CONAC ANCHORS CAST IN AS SHOWN.

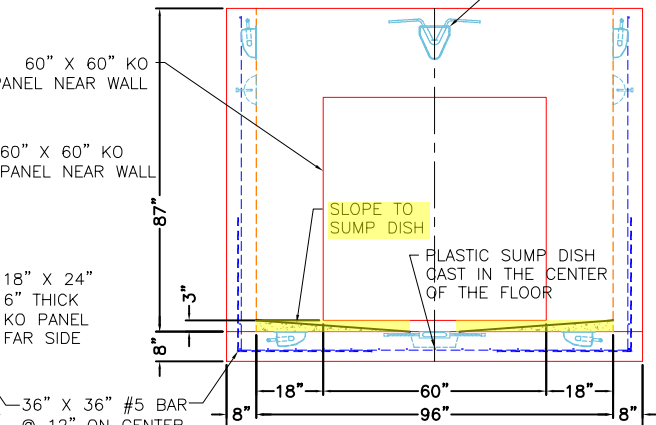
CABLE PULL CAST INTO THE NEAR AND FAR WALL



**LEFT VIEW**



**FRONT VIEW**



**RIGHT VIEW**

**GENERAL NOTES:**

1. MANUFACTURED TO ASTM C-913 (LATEST REVISION).
2. CONCRETE: 5,000 PSI AT 28 DAYS.
3. REINFORCING: PER ASTM A615 (GRADE 60)  
WALLS - #5 BAR @ 6" C-C E.W.  
FLOOR - #5 BAR @ 10" C-C E.W.
4. WEIGHT:  
FIRST POUR = 8,421 LBS  
SECOND POUR = 25,793 LBS  
THIRD POUR = 1,498 LBS  
TOTAL WEIGHT = 34,214 LBS
5. CASTING: JR HOE MC-780 PROVIDED BY ICAST.
6. EXTERNAL COATING OF CS-55 PROVIDED BY ICAST.
7. 7'-0" AIM TWISTED HOOK LADDER PROVIDED BY ICAST.
8. FLOOR SLOPE TO DRAIN BY ICAST.
9. ALL SECTION JOINTS TO BE SEALED W/ CONSEAL CS-102 BUTYL.

**PRODUCTION WORK ORDER**

PRODUCT I.D.: BX9696-08BA-VH

DESCRIPTION: 96" X 96" X 87" TALL VAULT BASE



**QUALITY CONTROL CHECKLIST**

- ALL DIMENSIONS CORRECT.
- LIFTERS INSTALLED.
- OPENING CENTERED.
- REINFORCING CORRECT.
- SURFACE QUALITY ACCEPTABLE.
- EDGES CHAMFERED.
- ALL PATCHWORK ACCEPTABLE.

PRODUCT VIEW: RIGHT SIDE UP

CUSTOMER: THE STATE GROUP INDUSTRIAL (USA) LIMITED

PLANT: BEAVER DAM, KY.

PROJECT: KYMEA CENTER ELECTRICAL MANHOLES

WEIGHT: 34,214 LBS.

STRUCTURE: ELECTRICAL MANHOLE 2

TOP SECTION JOINT: N/A

ORDER NO: 25-2219

BASE SECTION JOINT: N/A

PC: A. CHAMBERS

DRAWING: J. COPPAGE

QC CHECK INITIALS:

DATE: 10/28/25

SCALE: NTS

PG. 3 of 3