

Job Name: 25-2216 Lock 4 Road Sewer Addition
 Job Location: Gallatin, TN
 Contractor: Endesol, Inc.

Plant: Beaver Dam

11/19/2025 11:30:53 AM

Tech: J. Coppage

PC: E. Bradley



Structure ID: Wet Well Top Slab

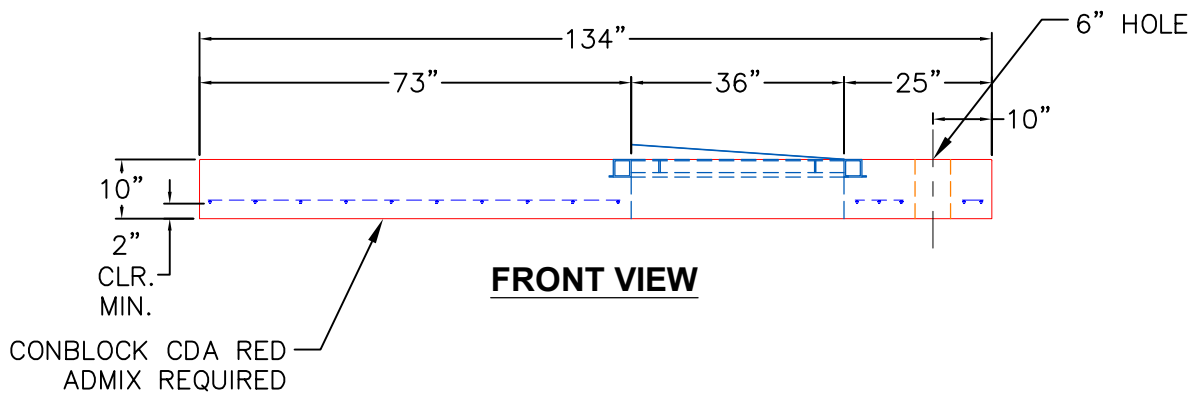
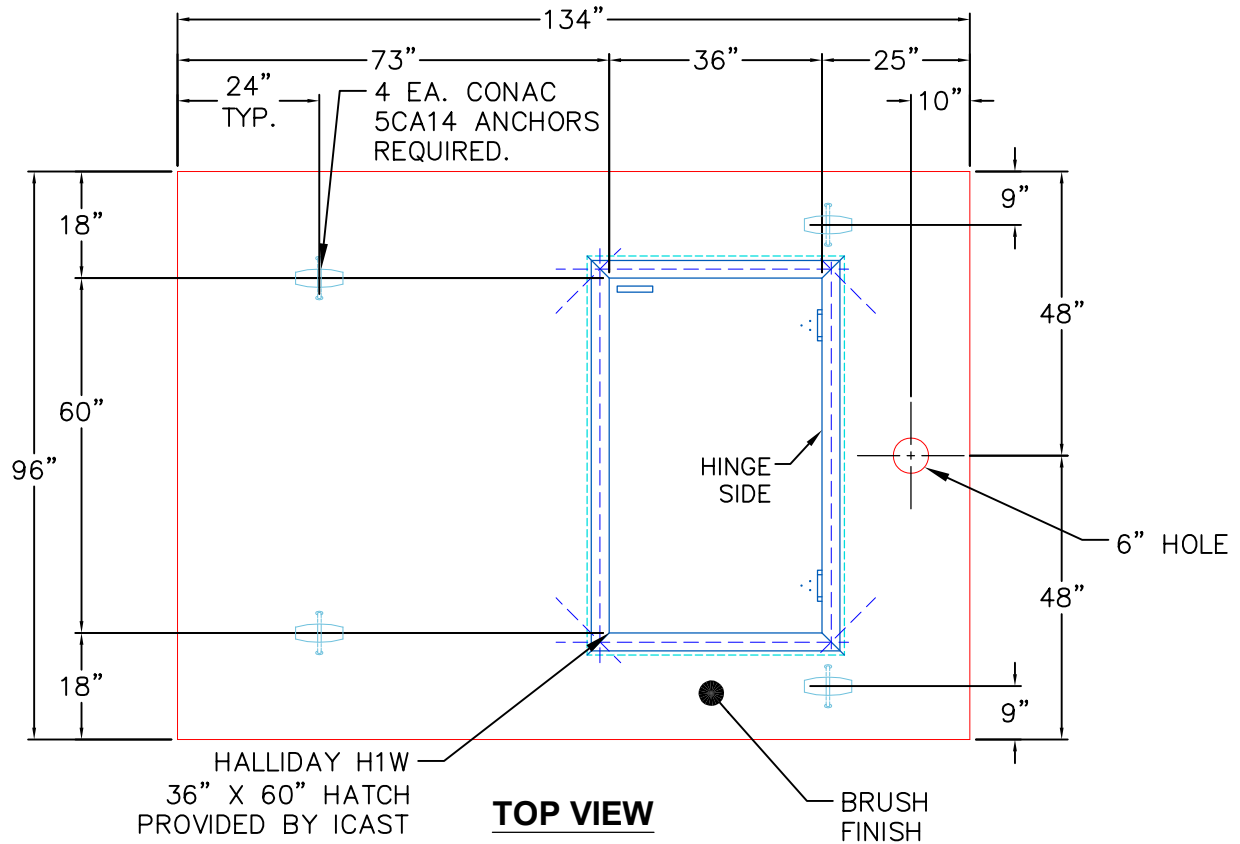
P1 CTS-CDARED

134" X 96" Custom Top Slab w/36" x 60" Hatch w/ConBlock-CDA Red

- P1) 134" X 96" - Custom Top Slab w/36" x 60" Hatch w/ConBlock-CDA Red - 10"
- 1) JOINT WRAP - 0.065"x6"x50' CONSEAL CS212
- 1) JOINT WRAP PRIMER - CONSEAL CS-75 (1 gal.)
- 1) This Structure Includes a Cast-in Item
- 1) SECONDARY POUR
- 1) 36" x 60" - Conseal CS-102 1.00" (Double)

- 8958 lb Structure Notes:
1. PER ASTM C478 SPECIFICATIONS.
 2. CONCRETE = 4,000 PSI AT 28 DAYS.
 3. REINFORCING PER ASTM A615 (GRADE 60).
 - TOP SLAB (As .31) #5 BARS AT 6" C.C.E.W.
 - RISER/WALLS (As .12)
 - FLOOR (As .37) #5 BARS AT 10" C.C.E.W.

Structure Total: 8958 lb



Coating (Int):
 Coating (Ext):

Seam Up: Flat
 Seam Dn: Flat

Wall Thickness: 7"

Height (Ext): 10"

Weight (Net): 8958 lb
 Volume (Net): 2.29cu.yd