

Job Name: 25-2212 City Park Pool and Bathhouse
 Job Location: Dawson Springs, KY
 Contractor: J&J EXCAVATING

Plant: 100

11/20/2025 6:32:08 PM

Tech: J.Horsley - A

PC: Erica Bradley



Structure ID: A

P2 BX036036-08LD08-24X24

CB FLAT TOP 8"W SPEC. (24"x24") F/F

- P3) 24" x 24" - CASTING HEIGHT - 5"
- P2) 36" x 36" - CB FLAT TOP 8"W SPEC. (24"x24") F/F - 8"
- P1) 36" x 36" - BOX BASE 8inW, 8inF, Variable Ht F/n - 35"
- 1) CASTING - HOE KY-465 SET (CBI TY F)
- 1) 36" x 36" - Conseal CS-102 1.00"
- 1) 24" x 24" - Conseal CS-102 1.00"
- 2) Hole - 24

0 lb
 1429 lb
 5296 lb
 465 lb
 0 lb
 0 lb
 0 lb

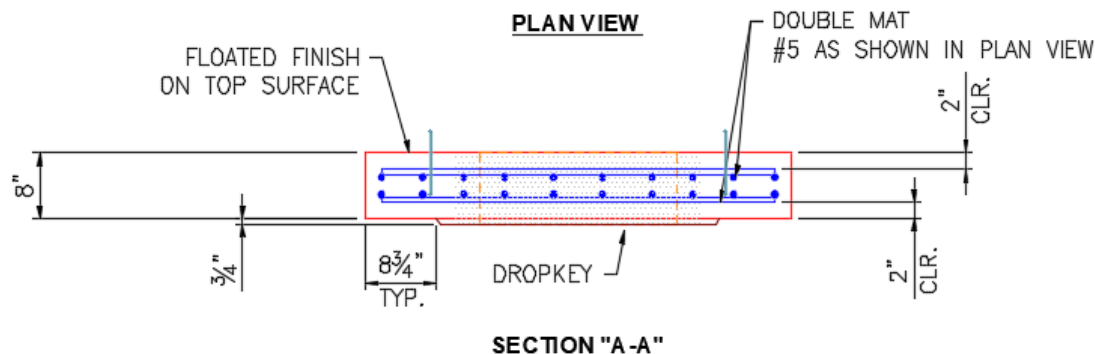
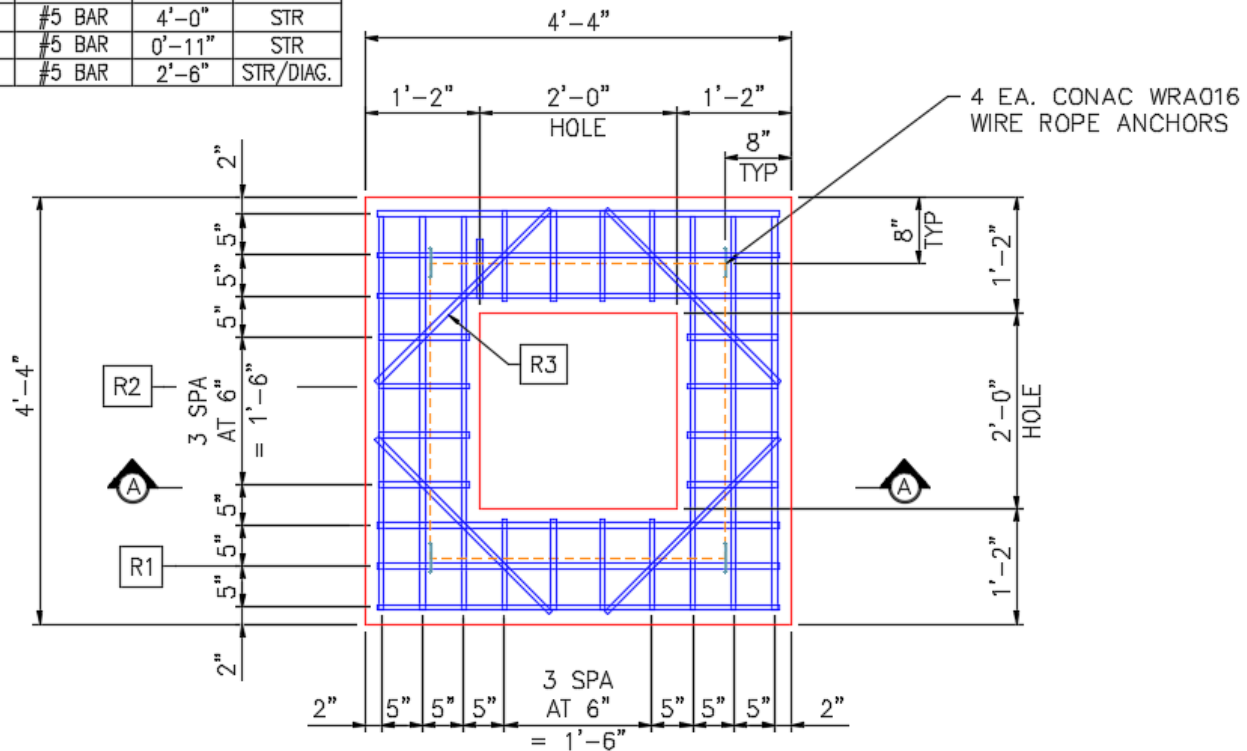
 Structure Total: 7190 lb

Structure Notes:

1. KYTC CBI TYPE F / ASTM C913 SPECIFICATIONS.
2. CONCRETE = 4,000 PSI AT 28 DAYS.
3. NO INVERT CHANNEL.
4. NO STEPS.
5. CASTING BY ICAST HOE KY-465.

REINFORCING PER ASTM A615 (GRADE 60).
 - TOP SLAB: #5 BARS AT 6" C.C.E.W (DBL MAT)
 - WALLS (As .31) #5 BARS AT 12" C.C.E.W.
 - FLOOR (As .31) #5 BARS AT 12" C.C.E.W.

REINFORCEMENT CUT LIST				
BAR	QTY	MATERIAL	LENGTH	SHAPE
R1	24	#5 BAR	4'-0"	STR
R2	32	#5 BAR	0'-11"	STR
R3	4	#5 BAR	2'-6"	STR/DIAG.



Coating (Int):
 Coating (Ext):

Seam Up: Flat
 Seam Dn: Flat

Wall Thickness: 8"

Height (Ext): 8"

Weight (Net): 1429 lb
 Volume (Net): 0.36cu.yd