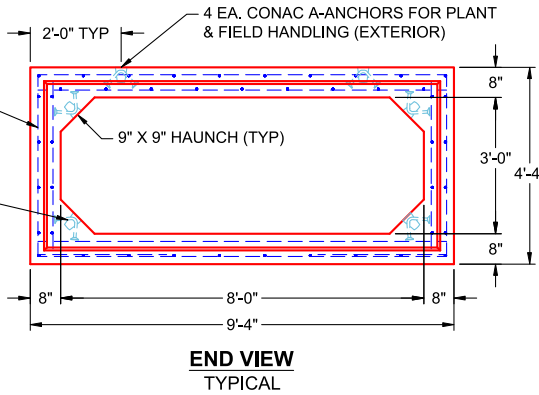
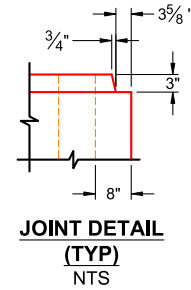
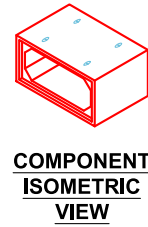




Structure ID: **BC 8 x 3 (PC 9)**
 Spec: Box Culvert
 Type: Box Culvert (08W/08F/08T)
 Size: 96" x 36"

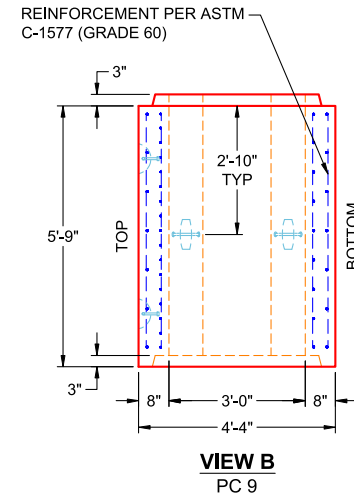
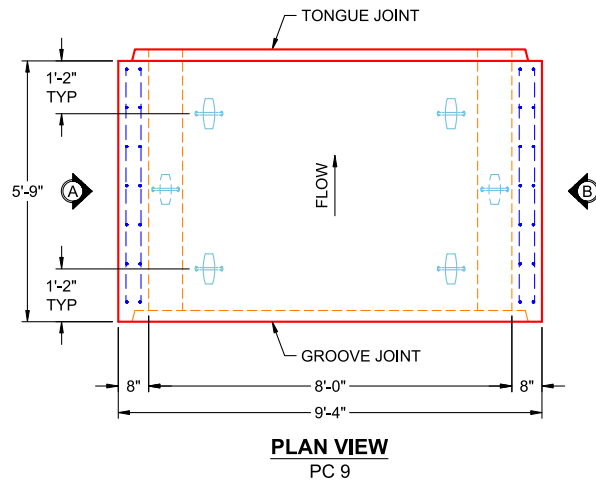
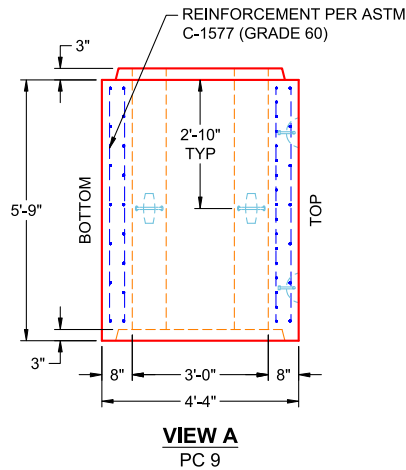
Rim: 5.75'
 Invert: 5.75'
 Rim to Invert: 0'

Sump: 0"
 Floor (Top): 0'
 Floor Height: 0"
 Floor (Bot): 0'
 Overall Height: 5.75'
 Slack: 0"



GENERAL NOTES:

1. MANUFACTURED TO ASTM C-1577 & SECTION 714 OF INDOT STANDARD SPECIFICATIONS FOR REINFORCED CONCRETE BOX STRUCTURES
2. LOAD REQUIREMENTS: HL93
3. REINFORCEMENT PER ASTM C-1577 (GRADE 60)
4. COVER DEPTH: 0'-5"
5. CONCRETE: 5,000 PSI AT 28 DAYS
6. JOINT SEALANT: 1" BUTYL MASTIC (CS-102) EXTERIOR JOINT WRAP: 12" WIDE (CS-212)
7. WEIGHT: 8' X 3' RCBC = 2,548 LBS / LF (5'-9" LONG SECTION = 14,649 LBS)



REVISION INFORMATION

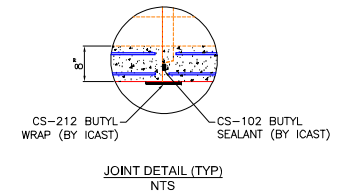
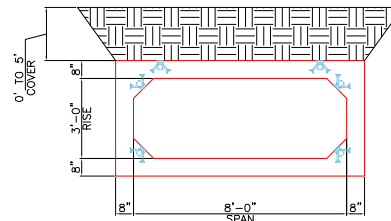
| REV. | DATE: | NO REVISIONS TO DATE |
|------|-------|----------------------|
| | | |
| | | |
| | | |
| | | |



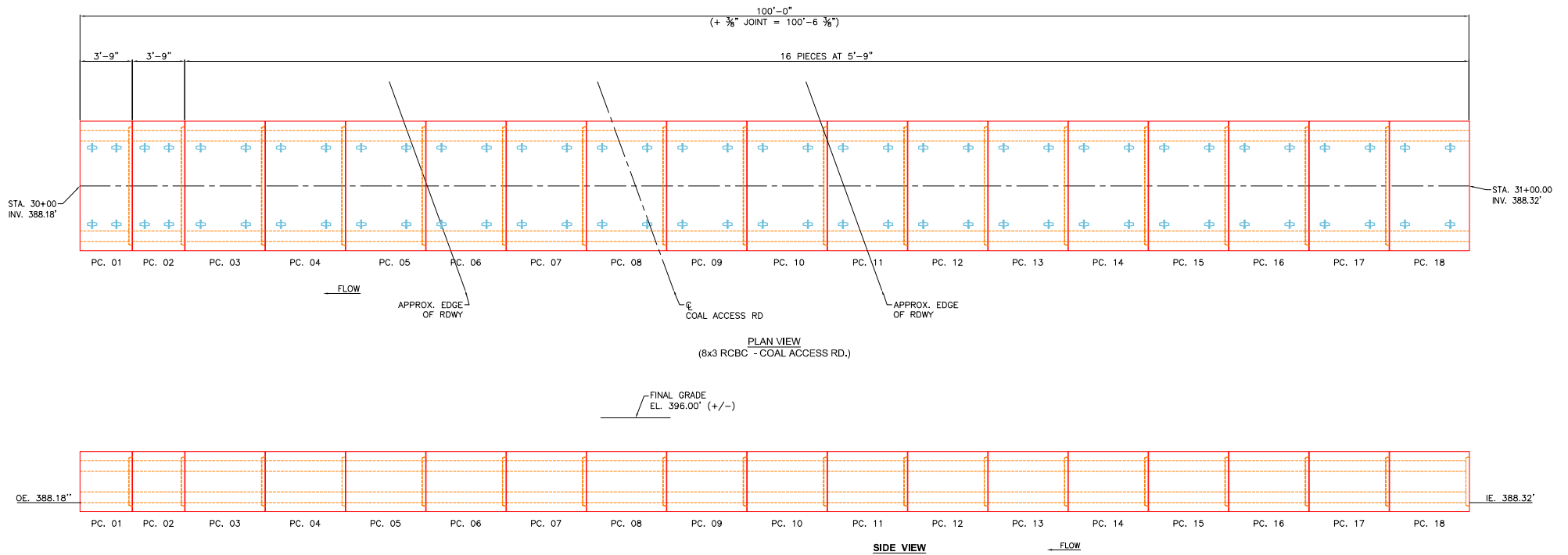
| | | |
|--|-----------------------|------------|
| SUBMITTAL DRAWING: 8'-0" X 3'-0" X 5'-9" BOX CULVERT (8" WALLS & 9" HAUNCH) | | |
| CUSTOMER: BOWEN ENGINEERING CORPORATION | | |
| PROJECT: ALCOA OUTFALL | | |
| STRUCTURE: BC 8 X 3 (PC 9) | | |
| QUOTE/SALES ORDER NO: 25-2073 | | |
| CHECKED BY: B. SMITH | DRAWN BY: K. CARDWELL | |
| DATE: 04/17/26 | SCALE: NTS | PG. 1 OF 1 |

NOTES:

1. BOX CULVERT IS DESIGNED PER ASTM C1577 & SECTION 714 OF THE INDOT STANDARD SPECIFICATIONS FOR REINFORCED CONCRETE BOX STRUCTURES.
 - INDOT STAMP NOT REQUIRED.
 - WEEP HOLES NOT REQUIRED.
2. LOAD REQUIREMENTS = HL9.3.
3. COVER DEPTH = 0' TO 5'.
4. CONCRETE: 5,000 PSI AT 28 DAYS.
5. JOINT SEALANT = 1" BUTYL MASTIC (CS 102).
6. EXTERIOR JOINT WRAP = 12" WIDE CS212.
7. REINFORCING PER ASTM C1577 (GRADE 60).
8. WEIGHT = 8'x3' RCBC = 2,635 LBS/L.FT
 5.75' LONG SECTIONS = 15,152 LBS
 3.75' LONG SECTIONS = 9,881 LBS



TYP. COVER DETAIL
NTS



REVISIONS

REV. Δ ??/??/?? ?



| | |
|---|-----------------------|
| SUBMITTAL DRAWING: 8x3 RCBC LAYING PLAN | |
| CUSTOMER: BOWEN ENGINEERING COPORATION | |
| PROJECT: ALCOA OUTFALL | |
| STRUCTURE I.D.: 8x3 BC | |
| QUOTE/ORDER NO: 25-2073 | |
| CHECK: B. SMITH | DRAWN BY: J. HORSLEY |
| DATE: 01/09/26 | SCALE: NTS PG. 1 of 1 |