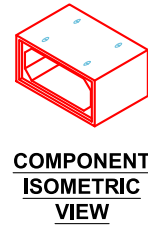




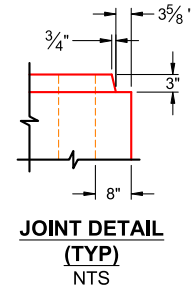
Structure ID: **BC 8 x 3 (PC 7)**  
 Spec: Box Culvert  
 Type: Box Culvert (08W/08F/08T)  
 Size: 96" x 36"

Rim: 5.75'  
 Invert: 5.75'  
 Rim to Invert: 0'

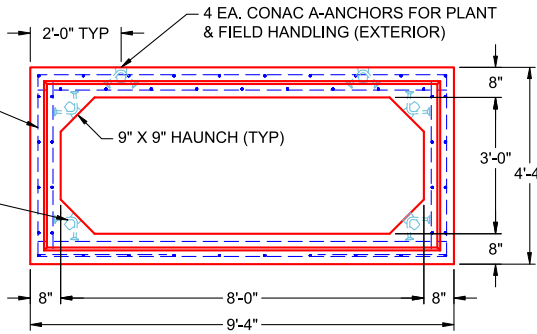
Sump: 0"  
 Floor (Top): 0'  
 Floor Height: 0"  
 Floor (Bot): 0'  
 Overall Height: 5.75'  
 Slack: 0"



**COMPONENT ISOMETRIC VIEW**



**JOINT DETAIL (TYP) NTS**



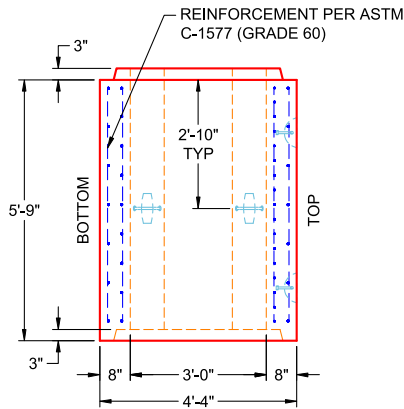
**END VIEW TYPICAL**

**GENERAL NOTES:**

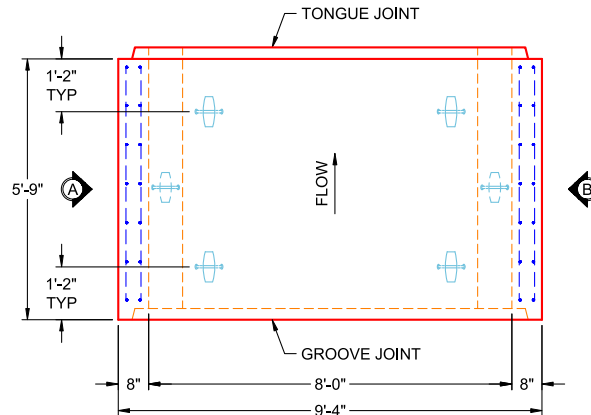
1. MANUFACTURED TO ASTM C-1577 & SECTION 714 OF INDOT STANDARD SPECIFICATIONS FOR REINFORCED CONCRETE BOX STRUCTURES
2. LOAD REQUIREMENTS: HL93
3. REINFORCEMENT PER ASTM C-1577 (GRADE 60)
4. COVER DEPTH: 0'-5"
5. CONCRETE: 5,000 PSI AT 28 DAYS
6. JOINT SEALANT: 1" BUTYL MASTIC (CS-102) EXTERIOR JOINT WRAP: 12" WIDE (CS-212)
7. WEIGHT: 8' X 3' RCBC = 2,548 LBS / LF (5'-9" LONG SECTION = 14,649 LBS)

REINFORCEMENT PER ASTM C-1577 (GRADE 60)

4 EA. CONAC A-ANCHORS CENTERED IN HAUNCH FOR PLANT HANDLING (INTERIOR)

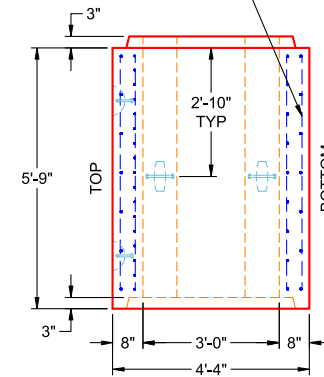


**VIEW A PC 7**



**PLAN VIEW PC 7**

REINFORCEMENT PER ASTM C-1577 (GRADE 60)



**VIEW B PC 7**

**REVISION INFORMATION**

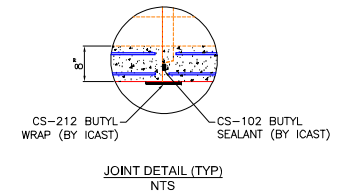
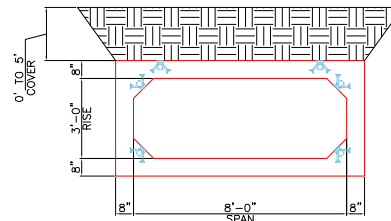
REV. DATE: NO REVISIONS TO DATE



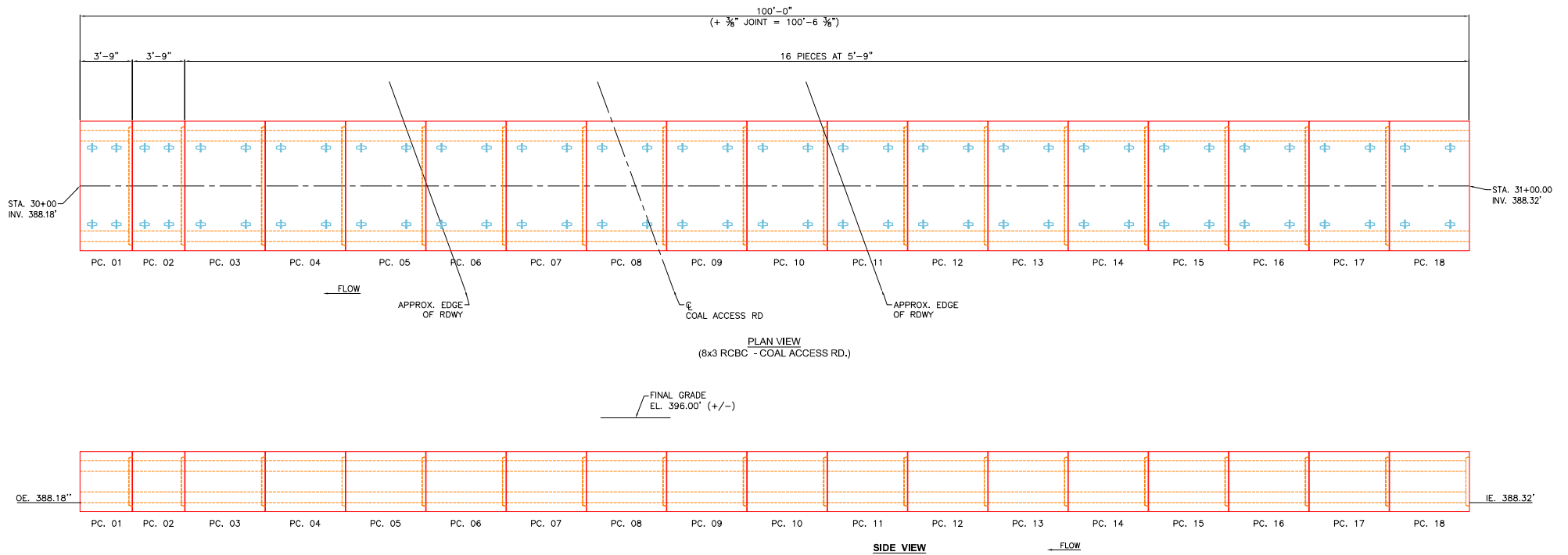
SUBMITTAL DRAWING: 8'-0" X 3'-0" X 5'-9" BOX CULVERT (8" WALLS & 9" HAUNCH)		
CUSTOMER: BOWEN ENGINEERING CORPORATION		
PROJECT: ALCOA OUTFALL		
STRUCTURE: BC 8 X 3 (PC 7)		
QUOTE/SALES ORDER NO: 25-2073		
CHECKED BY: B. SMITH	DRAWN BY: K. CARDWELL	
DATE: 04/17/26	SCALE: NTS	PG. 1 OF 1

**NOTES:**

1. BOX CULVERT IS DESIGNED PER ASTM C1577 & SECTION 714 OF THE INDOT STANDARD SPECIFICATIONS FOR REINFORCED CONCRETE BOX STRUCTURES.
  - INDOT STAMP NOT REQUIRED.
  - WEEP HOLES NOT REQUIRED.
2. LOAD REQUIREMENTS = HL9.3.
3. COVER DEPTH = 0' TO 5'.
4. CONCRETE: 5,000 PSI AT 28 DAYS.
5. JOINT SEALANT = 1" BUTYL MASTIC (CS 102).
6. EXTERIOR JOINT WRAP = 12" WIDE CS212.
7. REINFORCING PER ASTM C1577 (GRADE 60).
8. WEIGHT = 8'x3' RCBC = 2,635 LBS/L.FT  
 5.75' LONG SECTIONS = 15,152 LBS  
 3.75' LONG SECTIONS = 9,881 LBS



TYP. COVER DETAIL  
NTS



REVISIONS

REV.  $\Delta$  ??/??/?? ?



SUBMITTAL DRAWING: 8x3 RCBC LAYING PLAN	
CUSTOMER: BOWEN ENGINEERING COPORATION	
PROJECT: ALCOA OUTFALL	
STRUCTURE I.D.: 8x3 BC	
QUOTE/ORDER NO: 25-2073	
CHECK: B. SMITH	DRAWN BY: J. HORSLEY
DATE: 01/09/26	SCALE: NTS PG. 1 of 1