



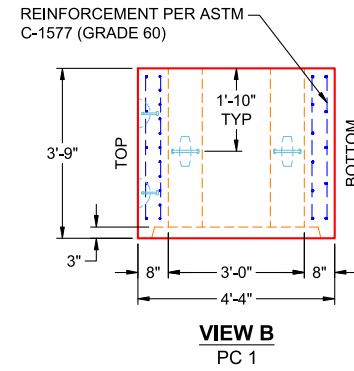
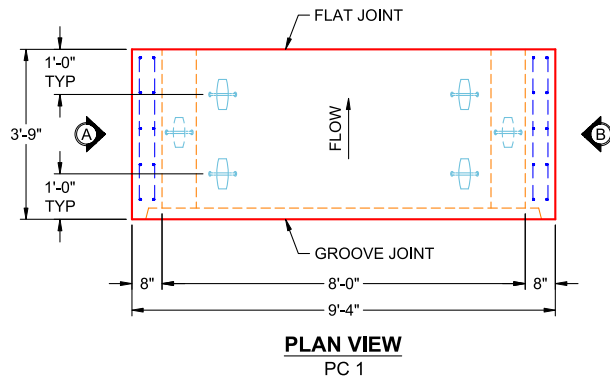
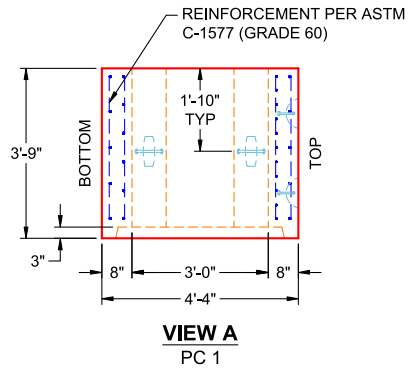
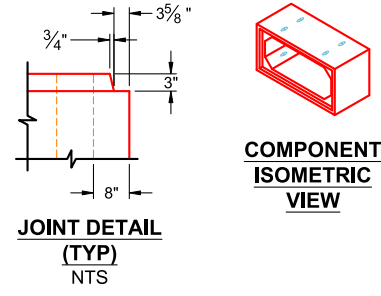
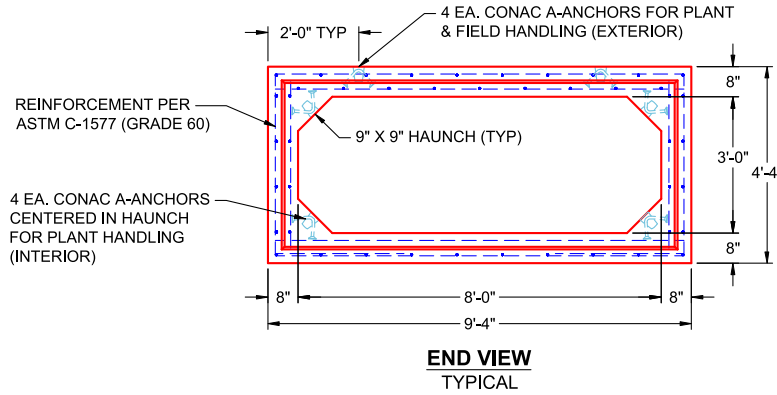
Structure ID: **BC 8 x 3 (PC 1)**
 Spec: Box Culvert
 Type: Box Culvert (08W/08F/08T)
 Size: 96" x 36"

Rim: 3.75'
 Invert: 3.75'
 Rim to Invert: 0'

Sump: 0"
 Floor (Top): 0'
 Floor Height: 0"
 Floor (Bot): 0'
 Overall Height: 3.75'
 Slack: 0"

GENERAL NOTES:

1. MANUFACTURED TO ASTM C-1577 & SECTION 714 OF INDOT STANDARD SPECIFICATIONS FOR REINFORCED CONCRETE BOX STRUCTURES
2. LOAD REQUIREMENTS: HL93
3. REINFORCEMENT PER ASTM C-1577 (GRADE 60)
4. COVER DEPTH: 0'-5"
5. CONCRETE: 5,000 PSI AT 28 DAYS
6. JOINT SEALANT: 1" BUTYL MASTIC (CS-102)
EXTERIOR JOINT WRAP: 12" WIDE (CS-212)
7. WEIGHT: 8' X 3' RCBC = 2,548 LBS / LF
(3'-9" LONG SECTION = 9,553 LBS)



REVISION INFORMATION

REV.	DATE	NO REVISIONS TO DATE

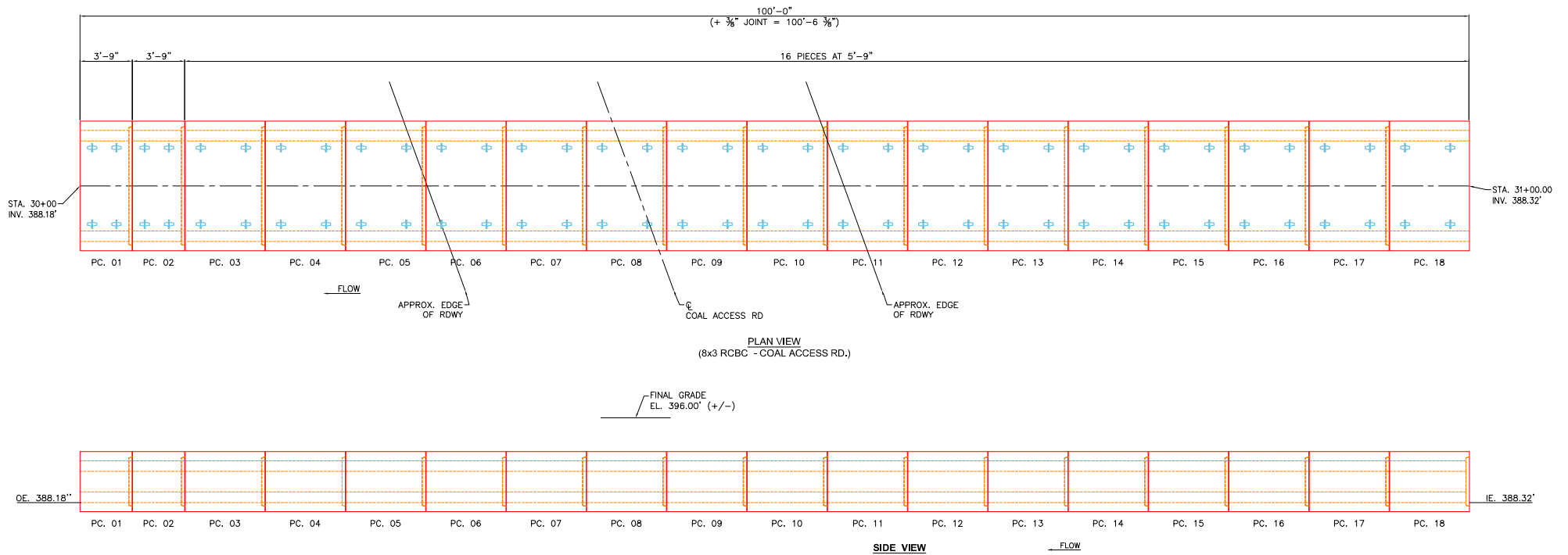
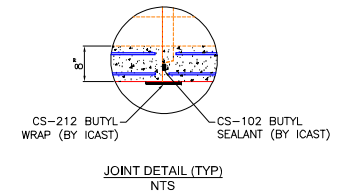
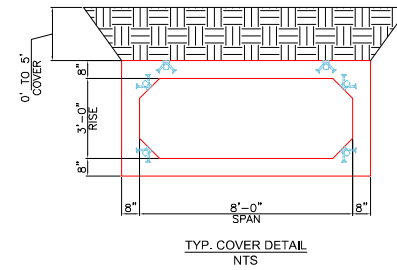


SUBMITTAL DRAWING: 8'-0" X 3'-0" X 3'-9" BOX CULVERT (8" WALLS & 9" HAUNCH)		
CUSTOMER: BOWEN ENGINEERING CORPORATION		
PROJECT: ALCOA OUTFALL		
STRUCTURE: BC 8 X 3 (PC 1)		
QUOTE/SALES ORDER NO: 25-2073		
CHECKED BY: B. SMITH	DRAWN BY: K. CARDWELL	
DATE: 04/17/26	SCALE: NTS	PG. 1 OF 1

THIS DRAWING IS THE PROPERTY OF INFRASTRUCTURE PRECAST, INC. ANY USE OR DUPLICATION OF THIS DRAWING WITHOUT PRIOR AUTHORIZATION IS STRICTLY PROHIBITED.

NOTES:

1. BOX CULVERT IS DESIGNED PER ASTM C1577 & SECTION 714 OF THE INDOT STANDARD SPECIFICATIONS FOR REINFORCED CONCRETE BOX STRUCTURES.
 - INDOT STAMP NOT REQUIRED.
 - WEEP HOLES NOT REQUIRED.
2. LOAD REQUIREMENTS = HL9.3.
3. COVER DEPTH = 0' TO 5'.
4. CONCRETE: 5,000 PSI AT 28 DAYS.
5. JOINT SEALANT = 1" BUTYL MASTIC (CS 102).
6. EXTERIOR JOINT WRAP = 12" WIDE CS212.
7. REINFORCING PER ASTM C1577 (GRADE 60).
8. WEIGHT = 8'x3' RCBC = 2,635 LBS/L.FT
 5.75' LONG SECTIONS = 15,152 LBS
 3.75' LONG SECTIONS = 9,881 LBS



REVISIONS	
REV. Δ ??/??/??	?



SUBMITTAL DRAWING: 8x3 RCBC LAYING PLAN	
CUSTOMER: BOWEN ENGINEERING COPORATION	
PROJECT: ALCOA OUTFALL	
STRUCTURE I.D.: 8x3 BC	
QUOTE/ORDER NO: 25-2073	
CHECK: B. SMITH	DRAWN BY: J. HORSLEY
DATE: 01/09/26	SCALE: NTS PG. 1 of 1