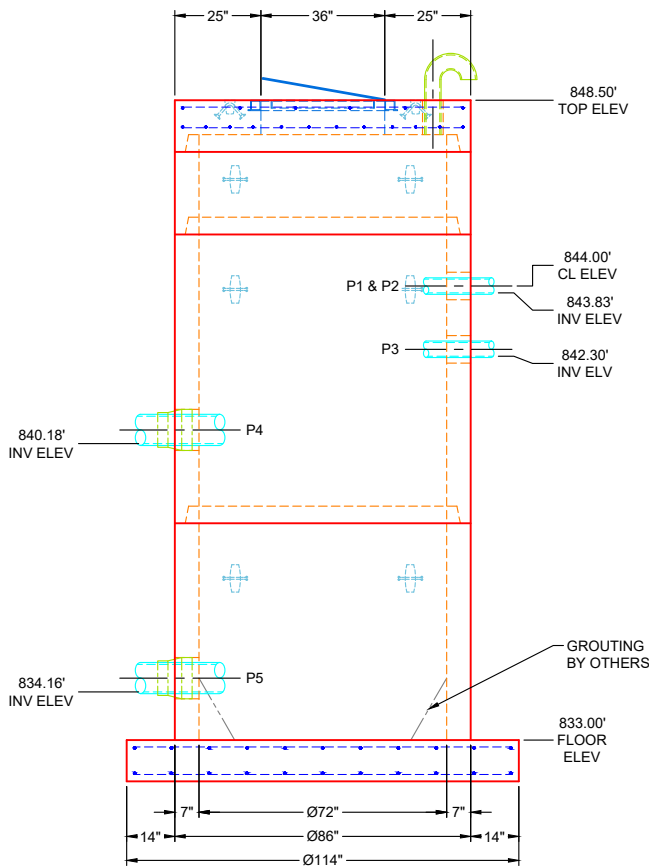


**PLAN VIEW**

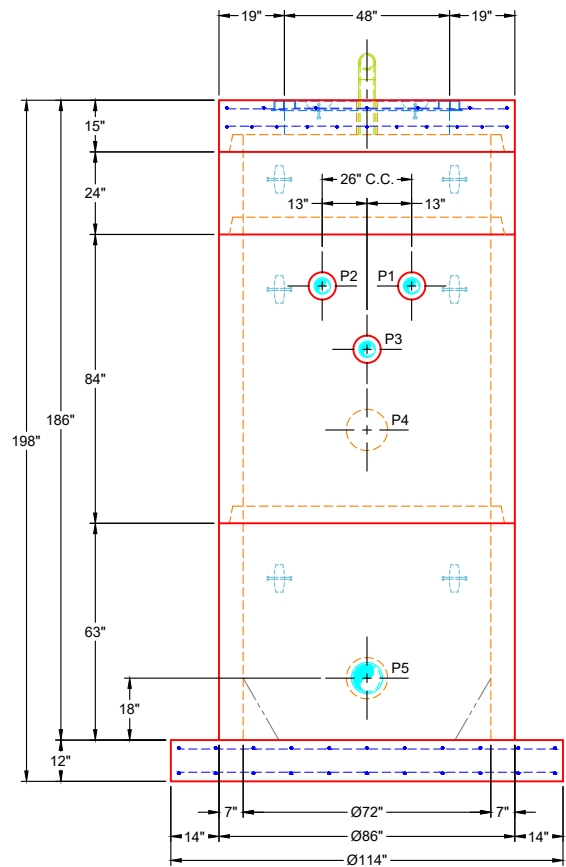
**GENERAL NOTES:**

1. MANUFACTURED TO ASTM C-478 (LATEST REVISION)
2. CONCRETE: 5,000 PSI AT 28 DAYS
3. REINFORCEMENT:
  - FLAT LID TOP MAT: #4 BAR @ 18" C.C. E.W. (GRADE 60)
  - FLAT LID BOTTOM MAT: #4 BAR @ 9" C.C. E.W. (GRADE 60)
  - BASE & RISERS: PER ASTM A615
4. WEIGHTS:
 

15" FLAT LID:	3,880 LBS
24" RISER	3,499 LBS
84" RISER	12,086 LBS
63" BASE W/ EXT. FLANGE	19,395 LBS
<b>TOTAL WEIGHT</b>	<b>38,860 LBS</b>
5. CONTRACTOR TO VERIFY ALL DIMENSIONS BEFORE MANUFACTURE
6. HALLIDAY W1R 36" X 48" HATCH SUPPLIED BY ICAST - TO BE CAST INTO FLAT LID
7. (2) PSX 12M DIRECT DRIVE BOOTS WITH DOUBLE EXTERNAL BANDS SUPPLIED BY ICAST
8. CARBOLINE 300M INTERNAL COATINGS REQUIRED (BY ICAST)
9. CONBLOCK CDA RED ADMIXTURE REQUIRED
10. 4" DUCTILE IRON VENT PIPE SUPPLIED BY OTHERS
11. JOINT SEALANT: CONSEAL CS-231 - 1" (PRIMARY & SECONDARY ROWS)  
EXTERIOR WRAP: 12" MACWRAP



**FRONT VIEW**



**SIDE VIEW**

**OPENINGS**

PIPE ID	ANGLE	ELEV	PIPE TYPE	CONNECTOR	HOLE SIZE
P1	0	843.83	4" DUCTILE IRON	MORTAR	Ø8"
P2	0	843.83	4" DUCTILE IRON	MORTAR	Ø8"
P3	0	842.30	4" DUCTILE IRON	MORTAR	Ø8"
P4	90	840.18	8" DUCTILE IRON	PSX 12M DD	Ø12"
P5	180	834.16	8" DUCTILE IRON	PSX 12M DD	Ø12"

**REVISIONS**

REV.	DATE:	NO REVISIONS TO DATE
0		



SUBMITTAL DRAWING: Ø72" WET WELL W/ CONBLOCK CDA RED		
CUSTOMER: WEDDLE ENTERPRISES, INC.		
PROJECT: SOUTH US 27 PH 2 SEWER EXTENSION		
STRUCTURE: WET WELL		
SALES ORDER NO: 25-2054B		
CHECKED BY: B. SMITH	DRAWN BY: K. CARDWELL	
DATE: 02/27/26	SCALE: NTS	PG. 1 OF 1