

Job Name: 25-2054B - South US 27 Ph 2 Sewer Extension
 Job Location: Somerset, KY 42501
 Contractor: Weddle Enterprises, Inc

Plant: Beaver Dam, KY
 3/2/2026 2:29:25 PM

Tech: K. Cardwell
 PC: C. Goff



Structure ID: Wet Well

P4 MH072LD15SCDARED

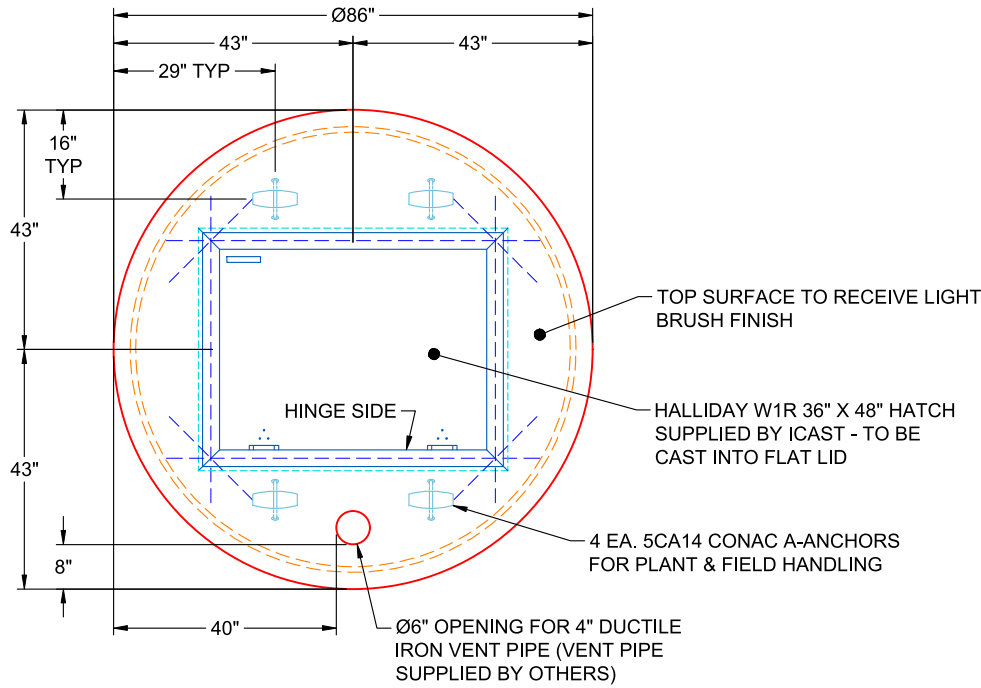
MH FLAT TOP w/36"x48" Hatch w/ConBlock CDA Red F/G

- P5) 36" x 48" - HATCH (CAST FLUSH) - 3"
 - P4) 72" - MH FLAT TOP w/36"x48" Hatch w/ConBlock CDA Red F/G - 15"
 - P3) 72" - MH RISER SPECIAL w/ConBlock-CDA Red T/G - 24"
 - P2) 72" - MH RISER SPECIAL w/ConBlock-CDA Red T/G - 84"
 - P1) 72" - MH BASE EF Cust. Ht. 12"F (14"EF =114"OD) w/ConBlock CDA Red T/n - 63"
 - 1) ADMIXTURE CONBLOCK CDA RED
 - 1) SPECIAL Internal Coating - Carboline 300M
 - 1) This Structure Includes a Cast-in Item - Halliday W1R 36" x 48" Hatch
 - 1) SECONDARY POUR - Extended Base Flange
 - 1) HATCH (Alum.) - HALLIDAY W1R 36"x48"
 - 3) 72" - Conseal CS-231 1.00" (Double)
 - 1) 36" x 48" - Conseal CS-231 1.00" (Double)
 - 3) Hole - 8
 - 2) PSX - 12M DD (DBL Bands)
- 336.94 SqFt) Carboline Bitumastic 300M [INT]

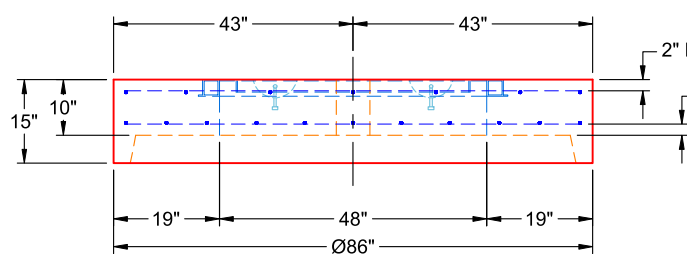
0 lb
 3880 lb
 3499 lb
 12086 lb
 19395 lb
 0 lb
 0 lb
 0 lb
 0 lb
 97 lb
 0 lb
 0 lb
 0 lb
 0 lb
 16 lb
 0 lb

 Structure Total: 38973 lb

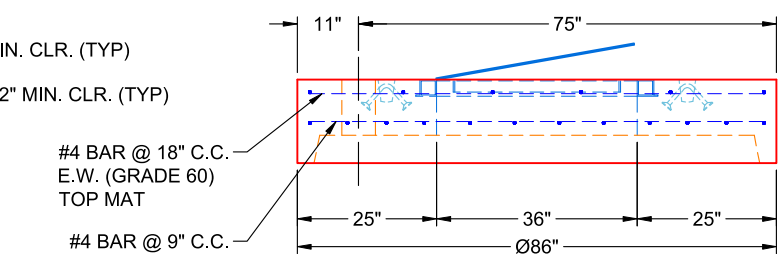
- Structure Notes:
1. PER ASTM C-478 SPECIFICATIONS
 2. CONCRETE: 5,000 PSI AT 28 DAYS
 3. REINFORCEMENT - 2" MIN. REBAR CLEARANCE (TYP):
 - TOP MAT: #4 BAR @ 18" C.C. E.W. (GRADE 60)
 - BOTTOM MAT: #4 BAR @ 9" C.C. E.W. (GRADE 60)
 4. CONBLOCK CDA RED ADMIXTURE REQUIRED
 5. CARBOLINE 300M INTERNAL COATING REQUIRED (BY ICAST)
 6. HALLIDAY W1R 36" X 48" HATCH SUPPLIED BY ICAST - TO BE CAST INTO FLAT LID
 7. 4" DUCTILE IRON VENT PIPE SUPPLIED BY OTHERS
 8. LIFTERS: 4 EA. 5CA14 CONAC A-ANCHORS FOR PLANT & FIELD HANDLING
 9. TOP SURFACE TO RECEIVE LIGHT BRUSH FINISH



**PLAN VIEW
(RIGHT SIDE UP)**



**FRONT VIEW
(RIGHT SIDE UP)**



**SIDE VIEW
(RIGHT SIDE UP)**

Coating (Int): Carboline Bitumastic 300M Coating (Ext):	Seam Up: Flat Seam Dn: Groove	Wall Thickness: 7"	Height (Ext): 15"	Weight (Net): 3880 lb Volume (Net): 0.99cu.yd
--	----------------------------------	--------------------	-------------------	--

Job Number:

25-2054B

Job Name:

South US 27 Ph 2 Sewer Extension

Structure:

Wet Well

Note:

Halliday W1R 36" x 48" Hatch

Supplied By iCast To Be Cast Into

Flat Lid

Job Number:

25-2054B

Job Name:

South US 27 Ph 2 Sewer Extension

Structure:

Wet Well

Note:

This Structure Is To Receive An
Internal Coating of Carboline 300M
(Supplied By iCast)