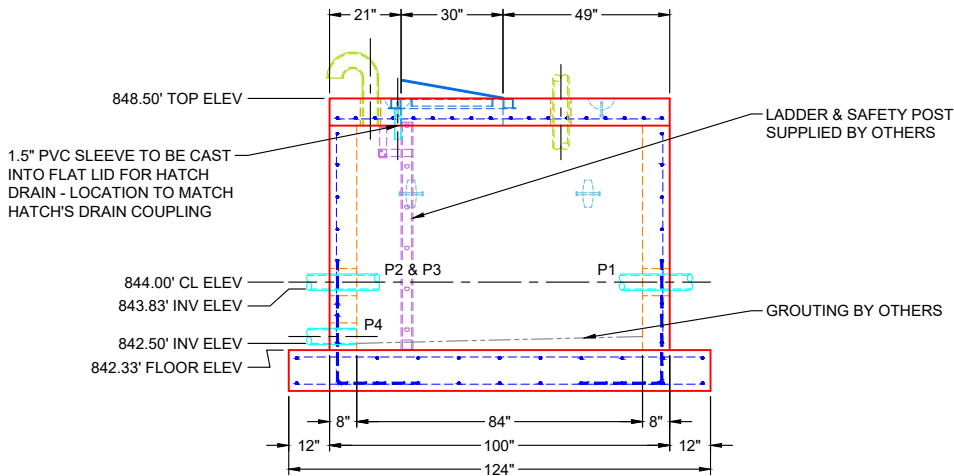
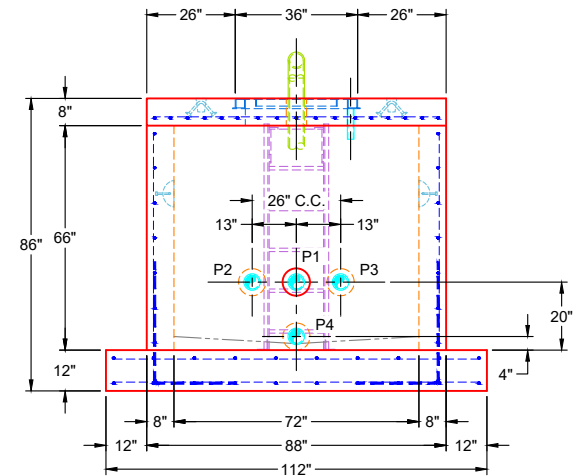


**PLAN VIEW**



**FRONT VIEW**



**SIDE VIEW**

**GENERAL NOTES:**

1. MANUFACTURED TO ASTM C-913 (LATEST REVISION)
2. CONCRETE: 5,000 PSI AT 28 DAYS
3. REINFORCEMENT:  
- FLAT LID: #5 BAR @ 6" C.C. E.W. (GRADE 60)  
- BASE: #5 BAR @ 12" C.C. E.W. (GRADE 60)
4. WEIGHTS:  
8" FLAT LID: 5,330 LBS  
66" BASE W/ EXT. FLANGE 29,091 LBS  
TOTAL WEIGHT 34,421 LBS
5. CONTRACTOR TO VERIFY ALL DIMENSIONS BEFORE MANUFACTURE
6. HALLIDAY W1R 30" X 30" HATCH SUPPLIED BY ICAST - TO BE CAST INTO FLAT LID
7. CARBOLINE 300M INTERNAL COATINGS REQUIRED (BY ICAST)
8. 4" DUCTILE IRON VENT PIPES SUPPLIED BY OTHERS
9. JOINT SEALANT: CONSEAL CS-102 - 1" (PRIMARY & SECONDARY ROWS)  
EXTERIOR WRAP: CONSEAL CS-212" - 6"

OPENINGS					
PIPE ID	ANGLE	ELEV	PIPE TYPE	CONNECTOR	HOLE SIZE
P1	0	843.83	4" DUCTILE IRON	MORTAR	Ø8"
P2	180	843.83	4" DUCTILE IRON	MORTAR	Ø8"
P3	180	843.83	4" DUCTILE IRON	MORTAR	Ø8"
P4	180	842.50	4" DUCTILE IRON	MORTAR	Ø8"

**REVISION INFORMATION**

REV. DATE: NO REVISIONS TO DATE



SUBMITTAL DRAWING: 72" X 84" VALVE VAULT

CUSTOMER: WEDDLE ENTERPRISES, INC.

PROJECT: SOUTH US 27 PH 2 SEWER EXTENSION

STRUCTURE: VALVE VAULT

QUOTE/SALES ORDER NO: 25-2054

CHECKED BY: B. SMITH

DRAWN BY: K. CARDWELL

DATE: 02/27/26

SCALE: NTS

PG. 1 OF 1