

Job Name: 25-2054B - South US 27 Ph 2 Sewer Extension
 Job Location: Somerset, KY 42501
 Contractor: Weddle Enterprises, Inc

Plant: Beaver Dam, KY
 3/2/2026 2:29:26 PM

Tech: K. Cardwell
 PC: C. Goff



Structure ID: Valve Vault

P2 BX072084-08LD08-SP

CB FLAT TOP 8"W w/30"x30" HATCH F/F

- P3) 30" x 30" - HATCH (CAST FLUSH) - 3"
- P2) 72" x 84" - CB FLAT TOP 8"W w/30"x30" HATCH F/F - 8"
- P1) 72" x 84" - BX BASE w/FLANGE 08W/12F/12EF F/n - 66"
- 1) SPECIAL Internal Coating - Carboline 300M
- 1) This Structure Includes a Cast-in Item - Halliday W1R 30" x 30" Hatch
- 1) SECONDARY POUR - Extended Base Flange
- 1) HATCH (Alum.) - HALLIDAY W1R 30"x30"
- 1) JOINT WRAP PRIMER - CONSEAL CS-75 (1 gal.)
- 1) JOINT WRAP - 0.065"x6"x50' CONSEAL CS212
- 1) 72" x 84" - Conseal CS-102 1.00" (Double)
- 4) Hole - 8

233.68 SqFt) Carboline Bitumastic 300M [INT]

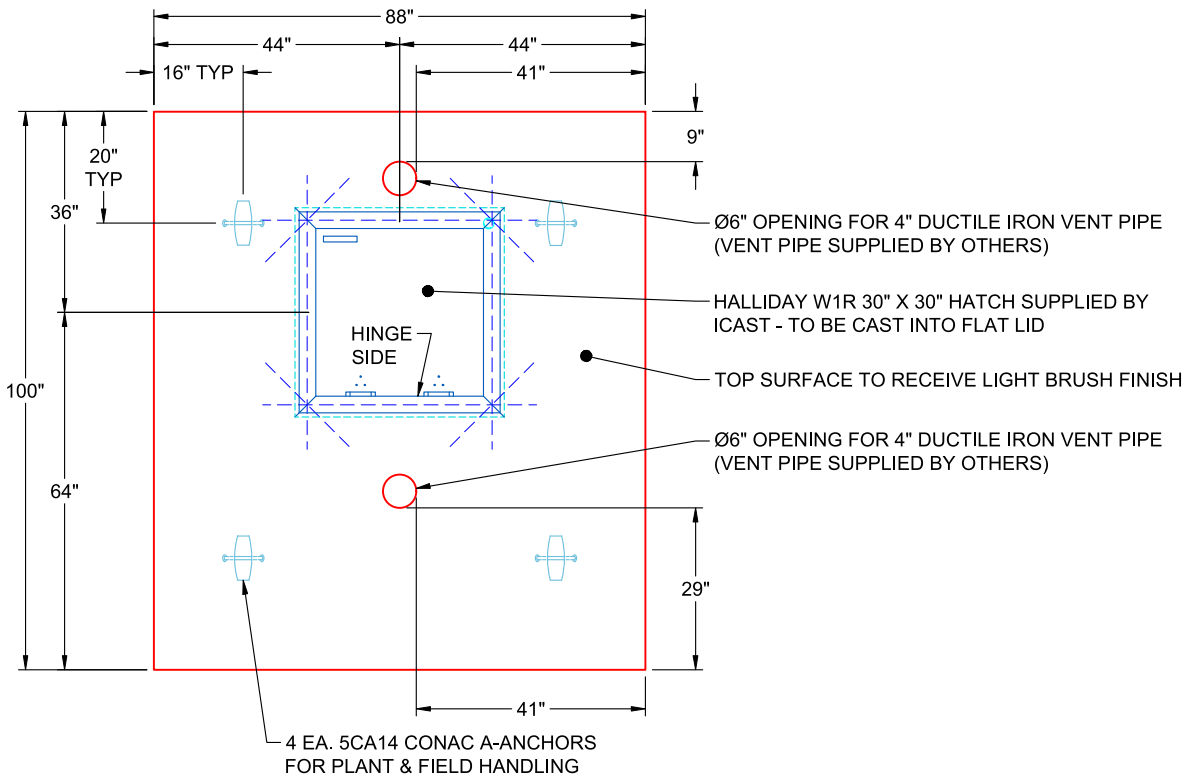
0 lb
 5330 lb
 29091 lb
 0 lb
 0 lb
 0 lb
 62 lb
 0 lb
 0 lb
 0 lb
 0 lb
 0 lb

 34483 lb

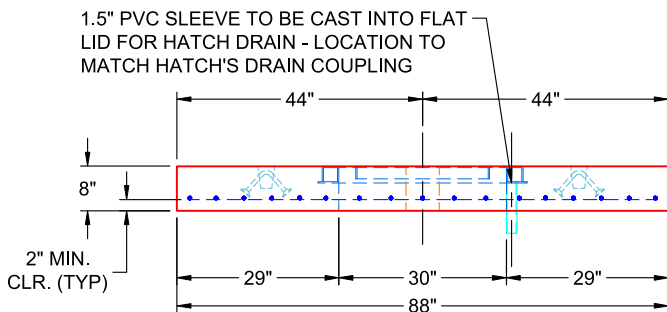
Structure Total:

Structure Notes:

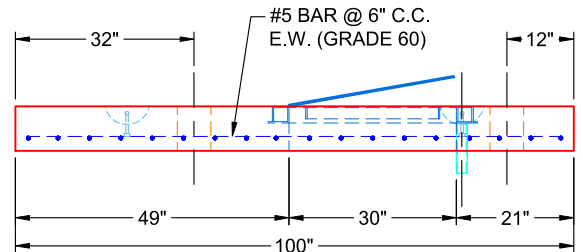
1. PER ASTM C-913 SPECIFICATIONS
2. CONCRETE: 5,000 PSI AT 28 DAYS
3. REINFORCEMENT: #5 BAR @ 6" C.C. E.W. (GRADE 60) - 2" MIN. REBAR CLEARANCE (TYP)
4. CARBOLINE 300M INTERNAL COATING REQUIRED (BY ICAST)
5. HALLIDAY W1R 30" X 30" HATCH SUPPLIED BY ICAST - TO BE CAST INTO FLAT LID
6. 4" DUCTILE IRON VENT PIPES SUPPLIED BY OTHERS
7. LIFTERS: 4 EA. 5CA14 CONAC A-ANCHORS FOR PLANT & FIELD HANDLING
8. TOP SURFACE TO RECEIVE LIGHT BRUSH FINISH



**PLAN VIEW
(RIGHT SIDE UP)**



**FRONT VIEW
(RIGHT SIDE UP)**



**SIDE VIEW
(RIGHT SIDE UP)**

Coating (Int): Carboline Bitumastic 300M
 Coating (Ext):

Seam Up: Flat
 Seam Dn: Flat

Wall Thickness: 8"

Height (Ext): 8"

Weight (Net): 5330 lb
 Volume (Net): 1.36cu.yd

Job Number:

25-2054B

Job Name:

South US 27 Ph 2 Sewer Extension

Structure:

Valve Vault

Note:

Halliday W1R 30" x 30" Hatch

Supplied By iCast To Be Cast Into

Flat Lid

Job Number:

25-2054B

Job Name:

South US 27 Ph 2 Sewer Extension

Structure:

Valve Vault

Note:

This Structure Is To Receive An
Internal Coating of Carboline 300M
(Supplied By iCast)