

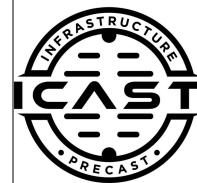
Job Name: 25-2054B - South US 27 Ph 2 Sewer Extension  
 Job Location: Somerset, KY 42501  
 Contractor: Weddle Enterprises, Inc

Plant: Beaver Dam, KY

Tech: K. Cardwell

3/3/2026 6:21:00 AM

PC: C. Goff



**Structure ID: Valve Vault**

**P1 BX7284-08W12FEBAV**

**BX BASE w/FLANGE 08W/12F/12EF F/n**

- P3) 30" x 30" - HATCH (CAST FLUSH) - 3" 0 lb
  - P2) 72" x 84" - CB FLAT TOP 8"W w/30"x30" HATCH F/F - 8" 5330 lb
  - P1) 72" x 84" - BX BASE w/FLANGE 08W/12F/12EF F/n - 66" 29091 lb
  - 1) SPECIAL Internal Coating - Carboline 300M 0 lb
  - 1) This Structure Includes a Cast-in Item - Halliday W1R 30" x 30" Hatch 0 lb
  - 1) SECONDARY POUR - Extended Base Flange 0 lb
  - 1) HATCH (Alum.) - HALLIDAY W1R 30"x30" 62 lb
  - 1) JOINT WRAP PRIMER - CONSEAL CS-75 (1 gal.) 0 lb
  - 1) JOINT WRAP - 0.065"x6"x50' CONSEAL CS212 0 lb
  - 1) 72" x 84" - Conseal CS-102 1.00" (Double) 0 lb
  - 4) Hole - 8 0 lb
- 233.68 SqFt) Carboline Bitumastic 300M [INT] 0 lb

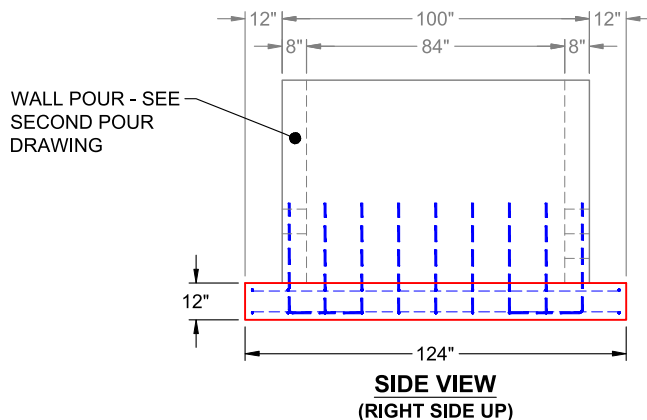
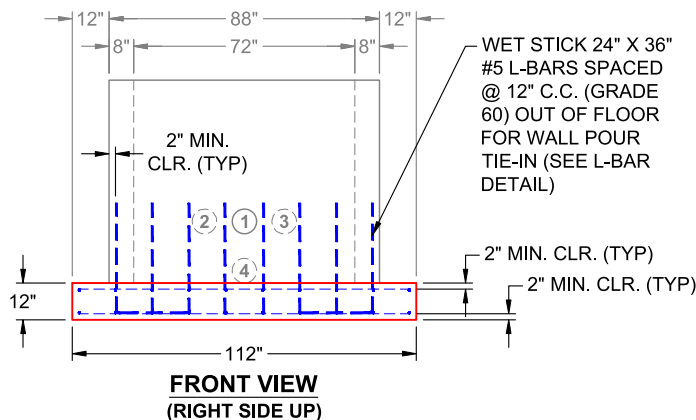
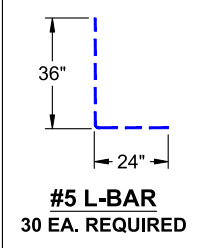
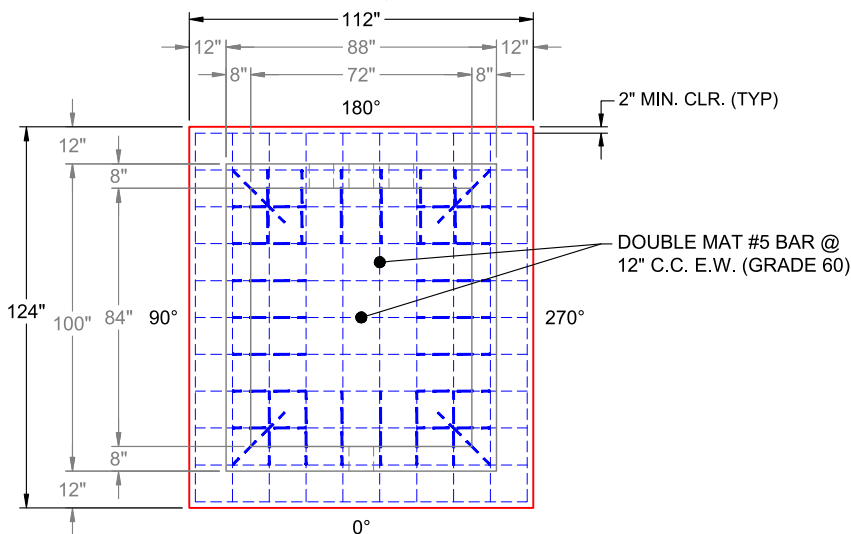
- Structure Notes:**
1. PER ASTM C-913 SPECIFICATIONS
  2. CONCRETE: 5,000 PSI AT 28 DAYS
  3. REINFORCEMENT: DOUBLE MAT #5 BAR @ 12" C.C. E.W. (GRADE 60) - 2" MIN. REBAR CLEARANCE (TYP)
  4. CARBOLINE 300M INTERNAL COATING REQUIRED (BY ICAST)
  5. ALUMINUM LADDER & SAFETY POST SUPPLIED BY OTHERS
  6. WET STICK 24" X 36" #5 L-BARS SPACED @ 12" C.C. (GRADE 60) OUT OF FLOOR FOR WALL POUR TIE-IN (SEE L-BAR DETAIL)

Structure Total: 34483 lb

**FIRST POUR (FLOOR): 13,984 LBS**  
**SECOND POUR (WALLS): 15,107 LBS**

Rim: 848.5' Rim to Invert: 6' Slack: 0" Sump: 2" Step Position:

Position	Elev	Angle	Ext. (cw)	Pipe	Pipe OD	Connector	Hole	Horz Size	Up ( )	Offset
Invert 1	843.83'	0°	44"	4" DI	4.75"	Hole 8	8"	8"	16"	0"
Invert 2	843.83'	180°	31"	4" DI	4.75"	Hole 8	8"	8"	16"	-13"
Invert 3	843.83'	180°	57"	4" DI	4.75"	Hole 8	8"	8"	16"	13"
Invert 4	842.5'	180°	44"	4" DI	4.75"	Hole 8	8"	8"	0"	0"
Invert 5										
Invert 6										



Coating (Int): Carboline Bitumastic 300M Coating (Ext):	Seam Up: Flat Seam Dn: n/a	Wall Thickness: 8" Floor Height: 12"	Height (Int): 66" Height (Ext): 78"	Weight (Net): 29091 lb Volume (Net): 7.43cu.yd
--	-------------------------------	---	--	---

Job Name: 25-2054B - South US 27 Ph 2 Sewer Extension  
 Job Location: Somerset, KY 42501  
 Contractor: Weddle Enterprises, Inc

Plant: Beaver Dam, KY  
 3/3/2026 6:21:00 AM

Tech: K. Cardwell  
 PC: C. Goff



**Structure ID: Valve Vault**

**P1 BX7284-08W12FEBAV**

**BX BASE w/FLANGE 08W/12F/12EF F/n**

P3)	30" x 30" - HATCH (CAST FLUSH) - 3"	0 lb
P2)	72" x 84" - CB FLAT TOP 8"W w/30"x30" HATCH F/F - 8"	5330 lb
P1)	72" x 84" - BX BASE w/FLANGE 08W/12F/12EF F/n - 66"	29091 lb
1)	SPECIAL Internal Coating - Carboline 300M	0 lb
1)	This Structure Includes a Cast-in Item - Halliday W1R 30" x 30" Hatch	0 lb
1)	SECONDARY POUR - Extended Base Flange	0 lb
1)	HATCH (Alum.) - HALLIDAY W1R 30"x30"	62 lb
1)	JOINT WRAP PRIMER - CONSEAL CS-75 (1 gal.)	0 lb
1)	JOINT WRAP - 0.065"x6"x50' CONSEAL CS212	0 lb
1)	72" x 84" - Conseal CS-102 1.00" (Double)	0 lb
4)	Hole - 8	0 lb
	233.68 SqFt) Carboline Bitumastic 300M [INT]	0 lb
	Structure Total:	34483 lb

**Structure Notes:**  
 1. PER ASTM C-913 SPECIFICATIONS  
 2. CONCRETE: 5,000 PSI AT 28 DAYS  
 3. REINFORCEMENT: #5 BAR @ 12" C.C. E.W. (GRADE 60) - 2" MIN. REBAR CLEARANCE (TYP)  
 4. CARBOLINE 300M INTERNAL COATING REQUIRED (BY ICAST)  
 5. ALUMINUM LADDER & SAFETY POST SUPPLIED BY OTHERS  
 6. LIFTERS: 4 EA. 8CA18 CONAC A-ANCHORS FOR PLANT & FIELD HANDLING - INSTALLED IN 90° & 270° WALLS, MIN. 20" FROM TOP OF WALLS

**FIRST POUR (FLOOR): 13,984 LBS**

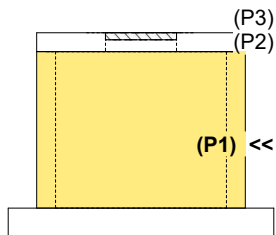
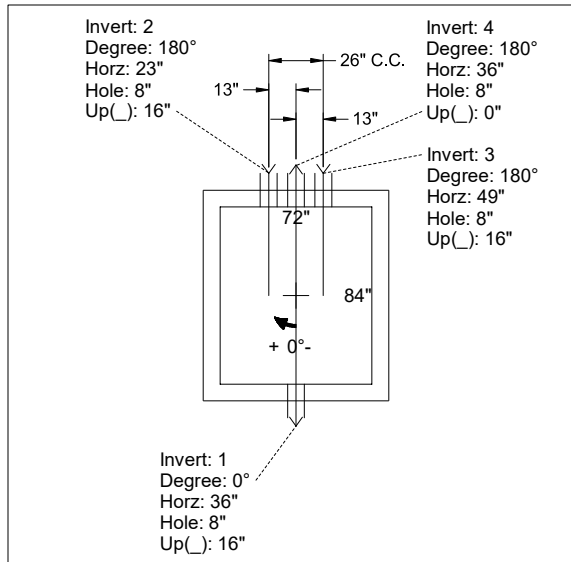
**SECOND POUR (WALLS): 15,107 LBS**

Rim: 848.5' Rim to Invert: 6' Slack: 0" Sump: 2" Step Position:

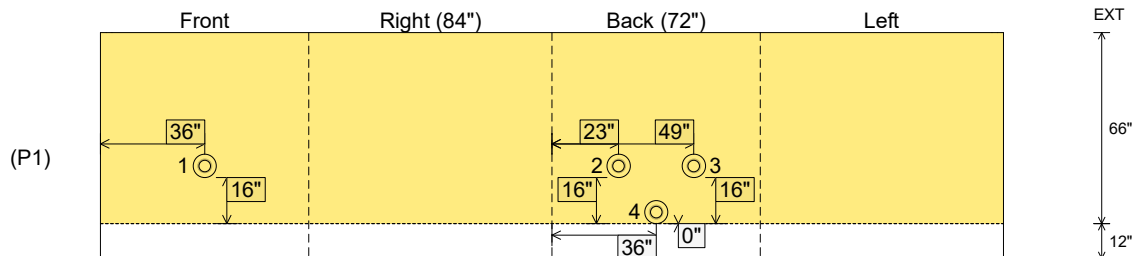
Position	Elev	Angle	Ext. (cw)	Pipe	Pipe OD	Connector	Hole	Horz Size	Up ( )	Offset
Invert 1	843.83'	0°	44"	4" DI	4.75"	Hole 8	8"	8"	16"	0"
Invert 2	843.83'	180°	31"	4" DI	4.75"	Hole 8	8"	8"	16"	-13"
Invert 3	843.83'	180°	57"	4" DI	4.75"	Hole 8	8"	8"	16"	13"
Invert 4	842.5'	180°	44"	4" DI	4.75"	Hole 8	8"	8"	0"	0"
Invert 5										
Invert 6										

RIGHT-SIDE UP VIEW (int. dimensions)

UPSIDE-DOWN VIEW (int. dimensions)



INSIDE WALL DIMENSIONS



Coating (Int): Carboline Bitumastic 300M  
 Coating (Ext):

Seam Up: Flat  
 Seam Dn: n/a

Wall Thickness: 8"  
 Floor Height: 12"

Height (Int): 66"  
 Height (Ext): 78"

Weight (Net): 29091 lb  
 Volume (Net): 7.43cu.yd

**Job Number:**

25-2054B

**Job Name:**

South US 27 Ph 2 Sewer Extension

**Structure:**

Valve Vault

**Note:**

This Structure Is To Receive An  
Internal Coating of Carboline 300M  
(Supplied By iCast)