

Job Name: 25-1965 ACEE'S MARKET & DELI  
 Job Location: Fulton, KY  
 Contractor: Rinker Underground

Plant: Beaver Dam

12/2/2025 7:53:46 AM

Tech: J. Coppage

PC: J. Jarvis



**Structure ID: ST 15**

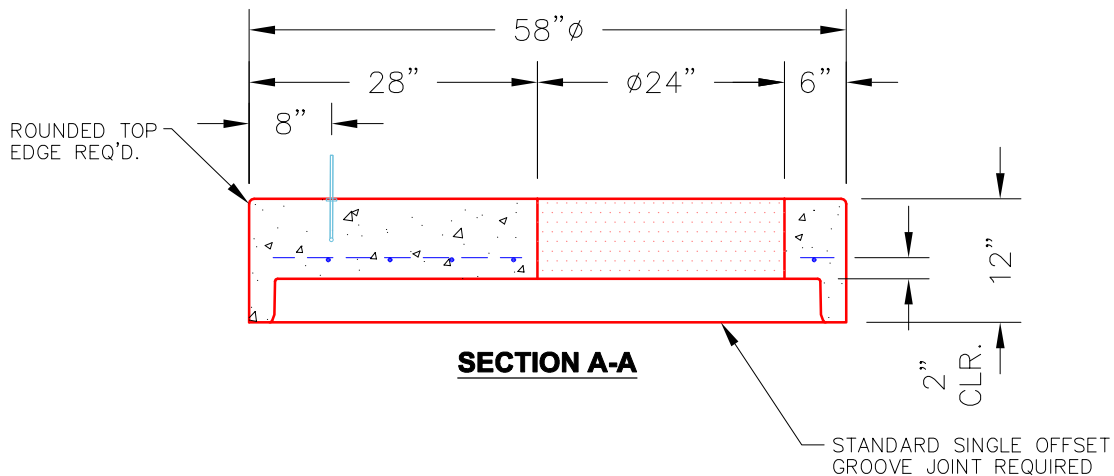
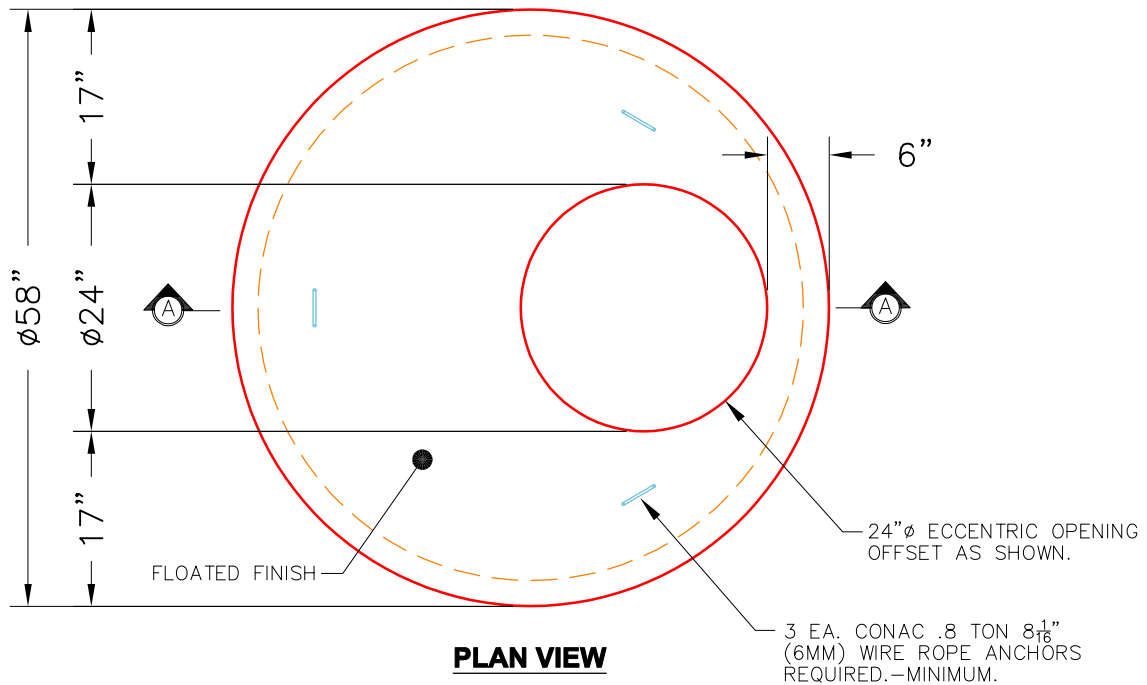
**P2 MH048LD12ECC**

**MH FLAT TOP w/ 24" ECC Hole**

- P3) 24" - CASTING HEIGHT - 7"
- P2) 48" - MH FLAT TOP w/ 24" ECC Hole - 12"
- P1) 48" - MH BASE Custom Ht - 33"
- 1) 48" - SGL 1"x14.5' Butyl (2x)
- 1) SQ. Hole - 24"x24"
- 1) SQ. Hole - 12"x12"
- 1) SQ. Hole - 20"x20"
- 3) MH Step ML-10-TDS-NCR - 10"

- Structure Notes:
1. PER ASTM C478 SPECIFICATIONS.
  2. CONCRETE = 4,000 PSI AT 28 DAYS.
  3. REINFORCING PER ASTM A615 (GRADE 60).
  4. HOE MC-315 STORM PROVIDED BY ICAST
- TOP SLAB (As .62) #5 BARS AT 6" C.C.E.W..
  - RISER/WALLS (As .12)
  - FLOOR (As .31) #5 BARS AT 12" C.C.E.W.

Structure Total: 4711 lb



Coating (Int): Coating (Ext):	Seam Up: Flat Seam Dn: Groove	Wall Thickness: 5"	Height (Ext): 12"	Weight (Net): 1561 lb Volume (Net): 0.42cu.yd
----------------------------------	----------------------------------	--------------------	-------------------	--