

Job Name: 25-1965 ACEE'S MARKET & DELI
 Job Location: Fulton, KY
 Contractor: Rinker Underground

Plant: Beaver Dam

Tech: J. Coppage

12/2/2025 7:53:28 AM

PC: J. Jarvis



Structure ID: ST 14

P1 BX2436-08BVF

BOX BASE 8inW, 8inF, Variable Ht

- P3) 24" x 36" - CASTING HEIGHT - 4"
- P2) 24" x 36" - GRADE RING - 4"
- P1) 24" x 36" - BOX BASE 8inW, 8inF, Variable Ht - 23"
- 2) 24" x 36" - SGL 1"x14.5' Butyl
- 1) SQ. Hole - 16"x16"

- Structure Notes:**
1. PER ASTM C913 SPECIFICATIONS.
 2. CONCRETE = 4,000 PSI AT 28 DAYS.
 3. JR HOE HOE-518 PROVIDED BY ICAST.
 4. REINFORCING PER ASTM A615 (GRADE 60).
 - TOP SLAB (As .62) #5 BARS AT 6" C.C.E.W.
 - WALLS (As .12) #5 BARS AT 12" C.C.E.W.
 - FLOOR (As .12) #5 BARS AT 12" C.C.E.W.

0 lb
 408 lb
 3571 lb
 0 lb
 0 lb

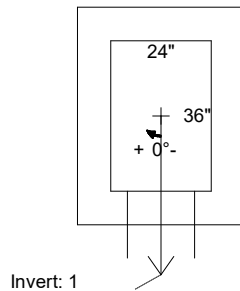
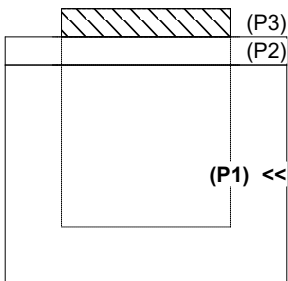
 Structure Total: 3979 lb

Rim: 415.37' Rim to Invert: 2.62' Slack: 0.44" Sump: 0" Step Position:

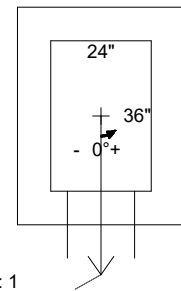
| Position | Elev | Angle | Ext. (cw) | Pipe | Pipe OD | Connector | Hole | Horz Size | Up () | Offset |
|----------|---------|-------|-----------|----------|---------|------------------|-----------|-----------|--------|--------|
| Invert 1 | 412.75' | 0° | 20" | 12" HDPE | 14.5" | SQ. Hole 16"x16" | 16" x 16" | 16" | -1.25" | 0" |
| Invert 2 | | | | | | | | | | |
| Invert 3 | | | | | | | | | | |
| Invert 4 | | | | | | | | | | |
| Invert 5 | | | | | | | | | | |
| Invert 6 | | | | | | | | | | |
| Invert 7 | | | | | | | | | | |
| Invert 8 | | | | | | | | | | |

RIGHT-SIDE UP VIEW (int. dimensions)

UPSIDE-DOWN VIEW (int. dimensions)

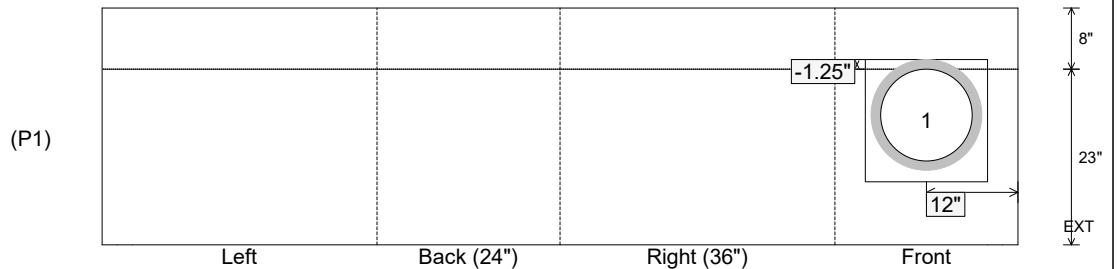


Invert: 1
 Degree: 0°
 Horz: 12"
 Hole: 16" x 16"
 Up(): -1.25"



Invert: 1
 Degree: 0°
 Horz: 12"
 Hole: 16" x 16"
 Up(): -1.25"

INSIDE WALL DIMENSIONS



Coating (Int):
 Coating (Ext):

Seam Up: Flat
 Seam Dn: n/a

Wall Thickness: 8"
 Floor Height: 8"

Height (Int): 23"
 Height (Ext): 31"

Weight (Net): 3571 lb
 Volume (Net): 0.91cu.yd