

Job Name: 25-1965 ACEE'S MARKET & DELI
 Job Location: Fulton, KY
 Contractor: Rinker Underground

Plant: Beaver Dam

Tech: J. Coppage

12/2/2025 7:53:24 AM

PC: J.Jarvis



Structure ID: ST 11

P1 BX2460-08BAVF

BOX BASE 8inW, 8inF, Variable Ht

- P2) 24" x 60" - CB INLET KY A 5' TOP LEFT - 10"
- P1) 24" x 60" - BOX BASE 8inW, 8inF, Variable Ht - 49"
- 1) CASTING - HOE KY-206 F/C (KY TY1)
- 1) 24" x 60" - Conseal CS-102 1.00"
- 2) SQ. Hole - 24"x24"
- 1) Horiz Slot - 60"x8"

- Structure Notes:
1. PER KYTC CBI TYPE A 5' (MOD) / ASTM C913 SPEC'S
 2. CONCRETE = 4,000 PI AT 28 DAYS
 3. REINFORCING PER ASTM A615 (GRADE 60)
 - TOP PHASE TOP (As .62) #5 BARS AT 6" C.C.E.W.
 - WALLS & FLOOR (As .31) #5 BARS AT 12" C.C.E.W.
 4. HOE KY-206 PROVIDED BY ICAST
 5. #5 BAR @ 12" C.C. TO BE STUBBED OUT OF 8" DEEP THROAT (INVERT 3) FOR GUTTER POUR TIE-IN

Structure Total: 9646 lb

1895 lb
 7545 lb
 206 lb
 0 lb
 0 lb
 0 lb

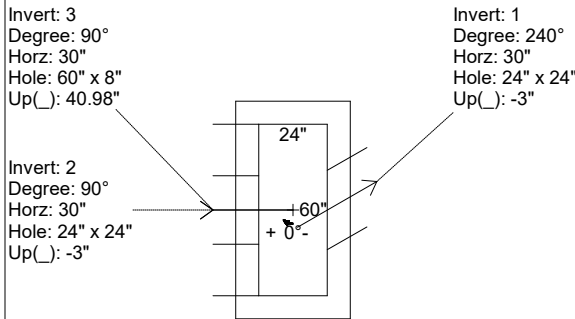
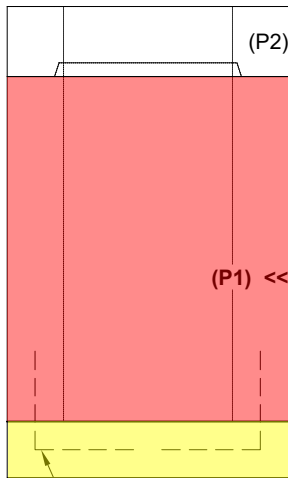
 9646 lb

FIRST POUR DRAWING

Rim: 416.26' Rim to Invert: 4.96' Slack: 0.52" Sump: 0" Step Position:

Position	Elev	Angle	Ext. (cw)	Pipe	Pipe OD	Connector	Hole	Horz Size	Up ()	Offset
Invert 1	411.3'	240°	33.381"	18" HDPE	21.2"	SQ. Hole 24"x24"	24" x 24"	27.713"	-3"	6"
Invert 2	411.3'	90°	38"	18" HDPE	21.2"	SQ. Hole 24"x24"	24" x 24"	24"	-3"	0"
Invert 3	414.715'	90°	38"	60" x 8" Horiz Slot	60" x 8"	Horiz Slot 60"x8"	60" x 8"	60"	40.98"	0"
Invert 4										
Invert 5										
Invert 6										
Invert 7										
Invert 8										

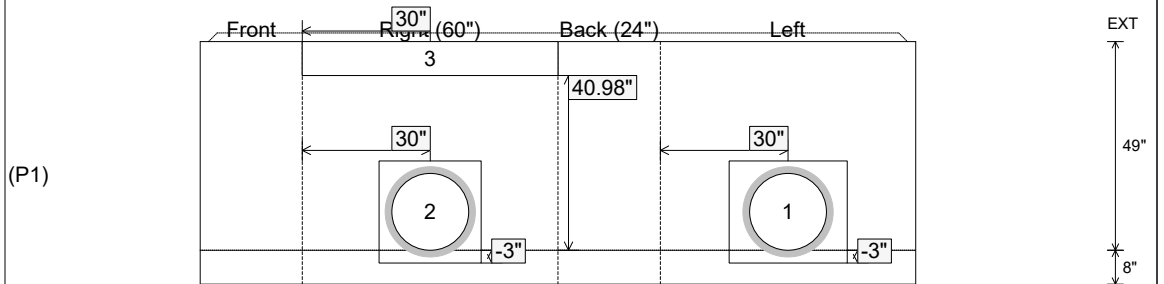
RIGHT-SIDE UP VIEW (int. dimensions)



WEIGHTS:

FIRST POUR - 2,041 LBS.
SECOND POUR - 5,504 LBS.
TOTAL - 7,545 LBS.

INSIDE WALL DIMENSIONS



14" X 14" #5 BAR
 @ 12" ON CENTER
 TIED INTO THE MAT

Coating (Int): Coating (Ext):	Seam Up: Tongue Seam Dn: n/a	Wall Thickness: 8" Floor Height: 8"	Height (Int): 49" Height (Ext): 57"	Weight (Net): 7545 lb Volume (Net): 1.93cu.yd
----------------------------------	---------------------------------	--	--	--

Job Name: 25-1965 ACEE'S MARKET & DELI
 Job Location: Fulton, KY
 Contractor: Rinker Underground

Plant: Beaver Dam

Tech: J. Coppage

12/2/2025 7:53:24 AM

PC: J.Jarvis



Structure ID: ST 11

P1 BX2460-08BAVF

BOX BASE 8inW, 8inF, Variable Ht

- P2) 24" x 60" - CB INLET KY A 5' TOP LEFT - 10"
- P1) 24" x 60" - BOX BASE 8inW, 8inF, Variable Ht - 49"
- 1) CASTING - HOE KY-206 F/C (KY TY1)
- 1) 24" x 60" - Conseal CS-102 1.00"
- 2) SQ. Hole - 24"x24"
- 1) Horiz Slot - 60"x8"

- Structure Notes:
1. PER KYTC CBI TYPE A 5' (MOD) / ASTM C913 SPEC'S
 2. CONCRETE = 4,000 PI AT 28 DAYS
 3. REINFORCING PER ASTM A615 (GRADE 60)
 - TOP PHASE TOP (As .62) #5 BARS AT 6" C.C.E.W.
 - WALLS & FLOOR (As .31) #5 BARS AT 12" C.C.E.W.
 4. HOE KY-206 PROVIDED BY ICAST
 5. #5 BAR @ 12" C.C. TO BE STUBBED OUT OF 8" DEEP THROAT (INVERT 3) FOR GUTTER POUR TIE-IN

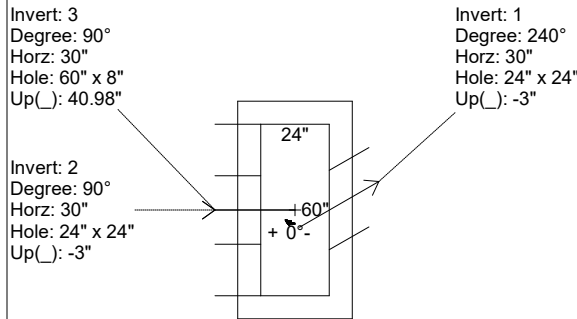
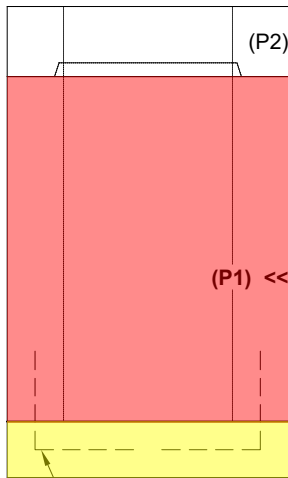
Structure Total: 9646 lb

SECOND POUR DRAWING

Rim: 416.26' Rim to Invert: 4.96' Slack: 0.52" Sump: 0" Step Position:

Position	Elev	Angle	Ext. (cw)	Pipe	Pipe OD	Connector	Hole	Horz Size	Up ()	Offset
Invert 1	411.3'	240°	33.381"	18" HDPE	21.2"	SQ. Hole 24"x24"	24" x 24"	27.713"	-3"	6"
Invert 2	411.3'	90°	38"	18" HDPE	21.2"	SQ. Hole 24"x24"	24" x 24"	24"	-3"	0"
Invert 3	414.715'	90°	38"	60" x 8" Horiz Slot	60" x 8"	Horiz Slot 60"x8"	60" x 8"	60"	40.98"	0"
Invert 4										
Invert 5										
Invert 6										
Invert 7										
Invert 8										

RIGHT-SIDE UP VIEW (int. dimensions)



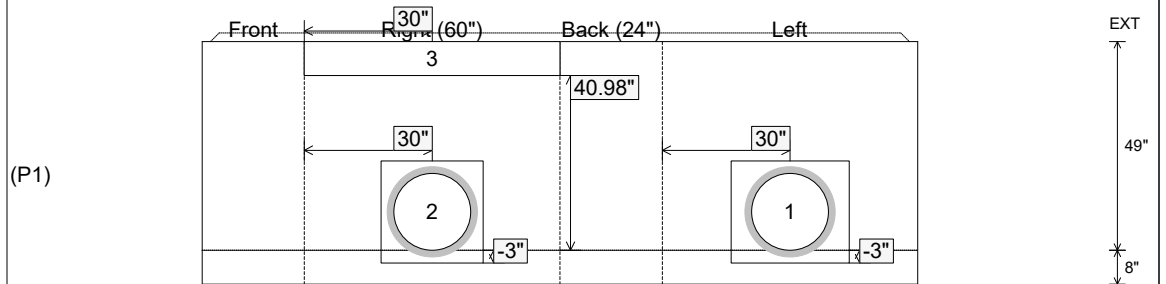
WEIGHTS:

FIRST POUR - 2,041 LBS.

SECOND POUR - 5,504 LBS.

TOTAL - 7,545 LBS.

INSIDE WALL DIMENSIONS



Coating (Int):
 Coating (Ext):

Seam Up: Tongue
 Seam Dn: n/a

Wall Thickness: 8"
 Floor Height: 8"

Height (Int): 49"
 Height (Ext): 57"

Weight (Net): 7545 lb
 Volume (Net): 1.93cu.yd