

Job Name: 25-1965 ACEE'S MARKET & DELI  
 Job Location: Fulton, KY  
 Contractor: Rinker Underground

Plant: Beaver Dam

Tech: J. Coppage

12/2/2025 7:53:23 AM

PC: J. Jarvis



**Structure ID: ST 10**

**P1 BX2460-08BAVF**

**BOX BASE 8inW, 8inF, Variable Ht**

- P2) 24" x 60" - CB INLET KY A 5' TOP LEFT - 10"
- P1) 24" x 60" - BOX BASE 8inW, 8inF, Variable Ht - 46"
- 1) CASTING - HOE KY-206 F/C (KY TY1)
- 1) 24" x 60" - Conseal CS-102 1.00"
- 1) SQ. Hole - 22"x22"
- 1) SQ. Hole - 24"x24"
- 1) Horiz Slot - 60"x8"

- Structure Notes:
1. PER KYTC CBI TYPE A 5' (MOD) / ASTM C913 SPEC'S
  2. CONCRETE = 4,000 PI AT 28 DAYS
  3. REINFORCING PER ASTM A615 (GRADE 60)
    - TOP PHASE TOP (As .62) #5 BARS AT 6" C.C.E.W.
    - WALLS & FLOOR (As .31) #5 BARS AT 12" C.C.E.W.
  4. HOE KY-206 PROVIDED BY ICAST
  5. #5 BAR @ 12" C.C. TO BE STUBBED OUT OF 8" DEEP THROAT (INVERT 3) FOR GUTTER POUR TIE-IN

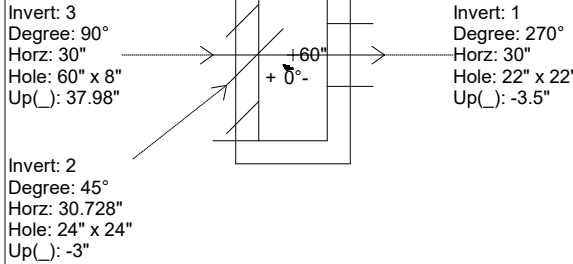
Structure Total: 9204 lb

**FIRST POUR DRAWING**

Rim: 415.56' Rim to Invert: 4.71' Slack: 0.52" Sump: 0" Step Position:

Position	Elev	Angle	Ext. (cw)	Pipe	Pipe OD	Connector	Hole	Horz Size	Up ( )	Offset
Invert 1	410.85'	270°	38"	15" RCP B WALL	19.5"	SQ. Hole 22"x22"	22" x 22"	22"	-3.5"	0"
Invert 2	410.85'	45°	30.728"	18" HDPE	21.2"	SQ. Hole 24"x24"	24" x 24"	33.941"	-3"	9"
Invert 3	414.015'	90°	38"	60" x 8" Horiz Slot	60" x 8"	Horiz Slot 60"x8"	60" x 8"	60"	37.98"	0"
Invert 4										
Invert 5										
Invert 6										
Invert 7										
Invert 8										

**RIGHT-SIDE UP VIEW (int. dimensions)**



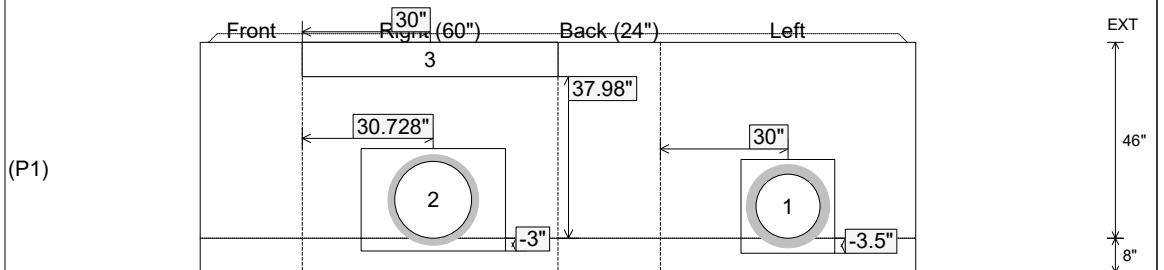
**WEIGHTS:**

**FIRST POUR - 2,041 LBS.**

**SECOND POUR - 5,062 LBS.**

**TOTAL - 7,103 LBS.**

**INSIDE WALL DIMENSIONS**



Coating (Int):  
Coating (Ext):

Seam Up: Tongue  
Seam Dn: n/a

Wall Thickness: 8"  
Floor Height: 8"

Height (Int): 46"  
Height (Ext): 54"

Weight (Net): 7103 lb  
Volume (Net): 1.81cu.yd

Job Name: 25-1965 ACEE'S MARKET & DELI  
 Job Location: Fulton, KY  
 Contractor: Rinker Underground

Plant: Beaver Dam

Tech: J. Coppage

12/2/2025 7:53:23 AM

PC: J. Jarvis



**Structure ID: ST 10**

**P1 BX2460-08BAVF**

**BOX BASE 8inW, 8inF, Variable Ht**

- P2) 24" x 60" - CB INLET KY A 5' TOP LEFT - 10"
- P1) 24" x 60" - BOX BASE 8inW, 8inF, Variable Ht - 46"
- 1) CASTING - HOE KY-206 F/C (KY TY1)
- 1) 24" x 60" - Conseal CS-102 1.00"
- 1) SQ. Hole - 22"x22"
- 1) SQ. Hole - 24"x24"
- 1) Horiz Slot - 60"x8"

- Structure Notes:
1. PER KYTC CBI TYPE A 5' (MOD) / ASTM C913 SPEC'S
  2. CONCRETE = 4,000 PI AT 28 DAYS
  3. REINFORCING PER ASTM A615 (GRADE 60)
    - TOP PHASE TOP (As .62) #5 BARS AT 6" C.C.E.W.
    - WALLS & FLOOR (As .31) #5 BARS AT 12" C.C.E.W.
  4. HOE KY-206 PROVIDED BY ICAST
  5. #5 BAR @ 12" C.C. TO BE STUBBED OUT OF 8" DEEP THROAT (INVERT 3) FOR GUTTER POUR TIE-IN

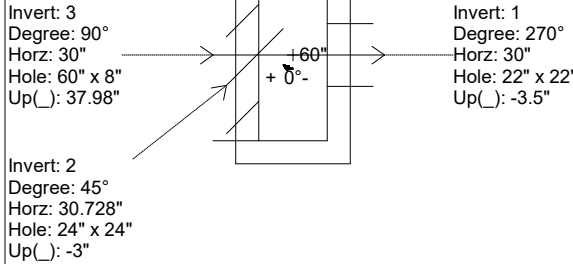
Structure Total: 9204 lb

**SECOND POUR DRAWING**

Rim: 415.56' Rim to Invert: 4.71' Slack: 0.52" Sump: 0" Step Position:

Position	Elev	Angle	Ext. (cw)	Pipe	Pipe OD	Connector	Hole	Horz Size	Up ( )	Offset
Invert 1	410.85'	270°	38"	15" RCP B WALL	19.5"	SQ. Hole 22"x22"	22" x 22"	22"	-3.5"	0"
Invert 2	410.85'	45°	30.728"	18" HDPE	21.2"	SQ. Hole 24"x24"	24" x 24"	33.941"	-3"	9"
Invert 3	414.015'	90°	38"	60" x 8" Horiz Slot	60" x 8"	Horiz Slot 60"x8"	60" x 8"	60"	37.98"	0"
Invert 4										
Invert 5										
Invert 6										
Invert 7										
Invert 8										

**RIGHT-SIDE UP VIEW (int. dimensions)**



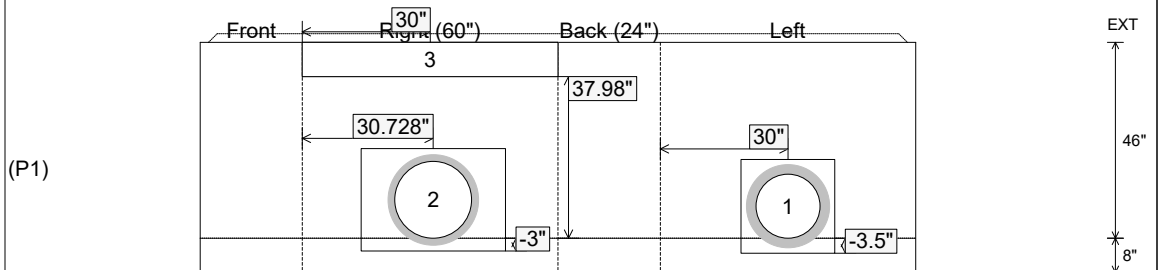
**WEIGHTS:**

**FIRST POUR - 2,041 LBS.**

**SECOND POUR - 5,062 LBS.**

**TOTAL - 7,103 LBS.**

**INSIDE WALL DIMENSIONS**



Coating (Int):  
 Coating (Ext):

Seam Up: Tongue  
 Seam Dn: n/a

Wall Thickness: 8"  
 Floor Height: 8"

Height (Int): 46"  
 Height (Ext): 54"

Weight (Net): 7103 lb  
 Volume (Net): 1.81cu.yd