

Job Name: 25-1951 - Speedway Site Design
 Job Location: Horse Cave, KY
 Contractor: Scotty's Contracting & Stone, LLC

Plant: 100
 12/3/2025 8:15:12 AM

Tech: J. Horsley - F
 PC: C. Goff



Structure ID: 102

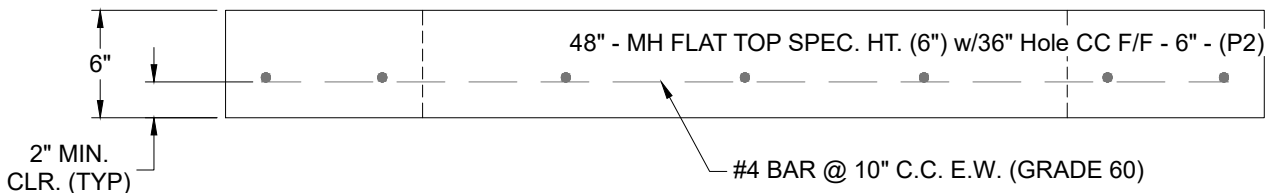
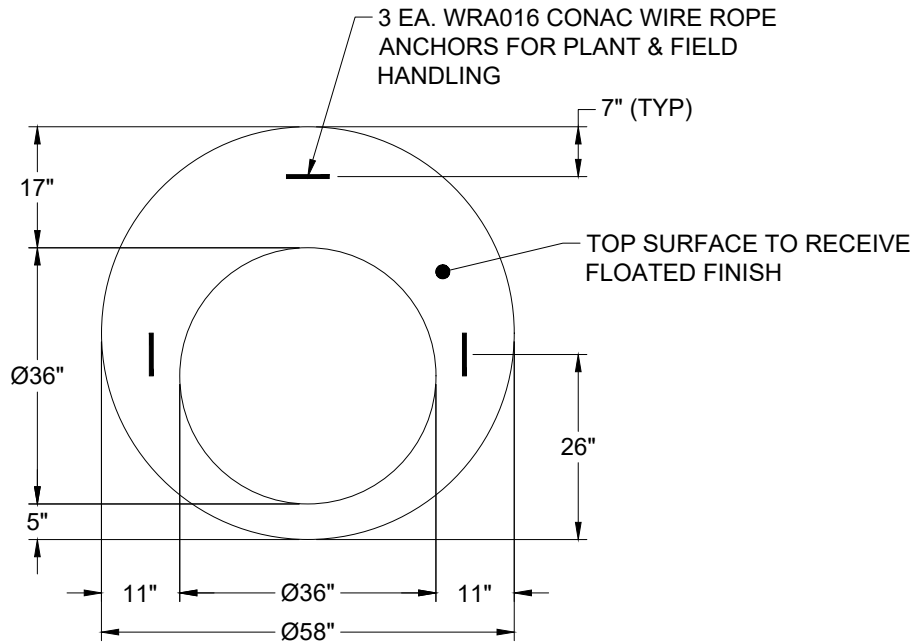
P2 MH048LD06SP

MH FLAT TOP SPEC. HT. (6") w/36" Hole CC F/F

- P3) 36" - CASTING HEIGHT - 6"
- P2) 48" - MH FLAT TOP SPEC. HT. (6") w/36" Hole CC F/F - 6"
- P1) 48" - MH BASE Custom Ht F/n - 33"
- 1) CASTING - HOE MCB-747B Fr./Bar Grate
- 1) 48" - Conseal CS-102 1.00"
- 1) 36" - Conseal CS-102 1.00"
- 1) DOGHOUSE INVRTD - 34"x33"
- 1) Hole - 22
- 3) MH Step ML-10-TDS-NCR - 10"

	0 lb
	818 lb
	3013 lb
	675 lb
	0 lb
	0 lb
	0 lb
	0 lb
	0 lb
	0 lb
	0 lb
Structure Total:	4506 lb

- Structure Notes:
1. PER ASTM C-478 SPECIFICATIONS
 2. CONCRETE: 4,000 PSI AT 28 DAYS
 3. REINFORCEMENT: #4 BAR @ 10" C.C. E.W. (GRADE 60) - 2" MIN. REBAR CLEARANCE (TYP)
 4. NO STEPS AND NO INVERT CHANNEL
 5. CASTING BY I-CAST (HOE MCB-747B FRAME & BAR GRATE)
 6. LIFTERS: 3 EA. WRA016 CONAC WIRE ROPE ANCHORS FOR PLANT & FIELD HANDLING



Coating (Int): Coating (Ext):	Seam Up: Flat Seam Dn: Flat	Wall Thickness: 5"	Height (Ext): 6"	Weight (Net): 818 lb Volume (Net): 0.21cu.yd
----------------------------------	--------------------------------	--------------------	------------------	---