

Job Name: 25-1951 - Speedway Site Design  
 Job Location: Horse Cave, KY  
 Contractor: Scotty's Contracting & Stone, LLC

Plant: 100  
 12/3/2025 8:15:11 AM

Tech: J. Horsley - F  
 PC: C. Goff



**Structure ID: 1**

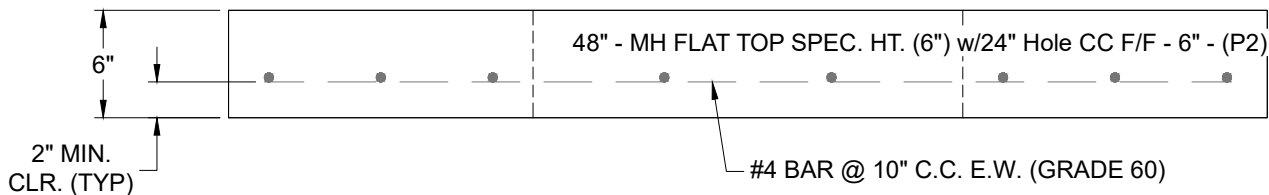
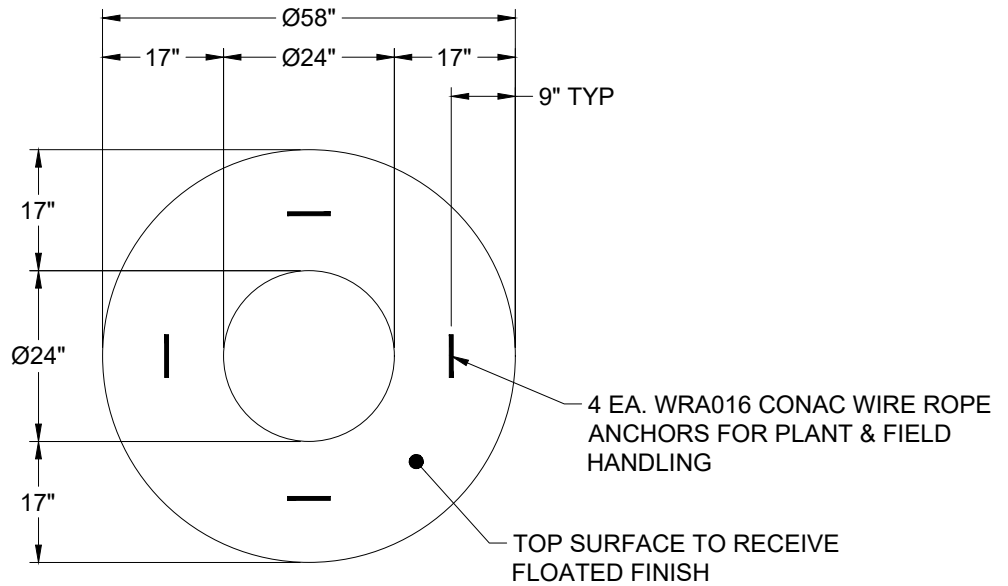
**P2 MH048LD06SP**

**MH FLAT TOP SPEC. HT. (6") w/24" Hole CC F/F**

- P3) 24" - CASTING HEIGHT - 7"
- P2) 48" - MH FLAT TOP SPEC. HT. (6") w/24" Hole CC F/F - 6"
- P1) 48" - MH BASE Custom Ht F/n - 58"
- 1) CASTING - HOE MCB-315-B Fr./Bar Grate
- 1) 48" - Conseal CS-102 1.00"
- 2) DOGHOUSE INVRTD - 26"x26"
- 2) MH Step ML-10-TDS-NCR - 10"

	0 lb
	1102 lb
	4840 lb
	255 lb
	0 lb
	0 lb
	0 lb
Structure Total:	6197 lb

- Structure Notes:**
1. PER ASTM C-478 SPECIFICATIONS
  2. CONCRETE: 4,000 PSI AT 28 DAYS
  3. REINFORCEMENT: #4 BAR @ 10" C.C. E.W. (GRADE 60) - 2" MIN. REBAR CLEARANCE (TYP)
  4. NO INVERT CHANNEL.
  5. CASTING BY I-CAST (HOE MCB-315-B FRAME & BAR GRATE)
  6. LIFTERS: 4 EA. WRA016 CONAC WIRE ROPE ANCHORS FOR PLANT & FIELD HANDLING



Coating (Int): Coating (Ext):	Seam Up: Flat Seam Dn: Flat	Wall Thickness: 5"	Height (Ext): 6"	Weight (Net): 1102 lb Volume (Net): 0.28cu.yd
----------------------------------	--------------------------------	--------------------	------------------	--