

Job Name: 25-1922B Reynold's Farm
Job Location: Goodlettsville, TN
Contractor: Josh King Excavating

PC: J. Jarvis
 TECH: S. Felletter
 Plant: Beaver Dam



Structure ID: C0.2 ST-MH

Spec: Storm
 Type: STM.MH
 Size: 60"

Rim: 521.57'
 Invert: 516.2'
 Rim to Invert: 5.37'

Sump: 1.9"
 Floor (Top): 516.042'
 Floor Height: 8"

Floor (Bot): 515.375'
 Overall Height: 6.167'
 Slack: 0.34"

Structure Notes:

1. PER ASTM C-478 SPECIFICATIONS
2. CONCRETE: 4,000 PSI AT 28 DAYS
3. REINFORCEMENT
 - FLAT LID: #5 BAR @ 6" C.C. E.W. (GRADE 60)
 - BASE: PER ASTM A615
4. STEPS AT 128 DEGREES
5. JBS 1150 FRAME & COVER "STORM" SUPPLIED BY ICAST

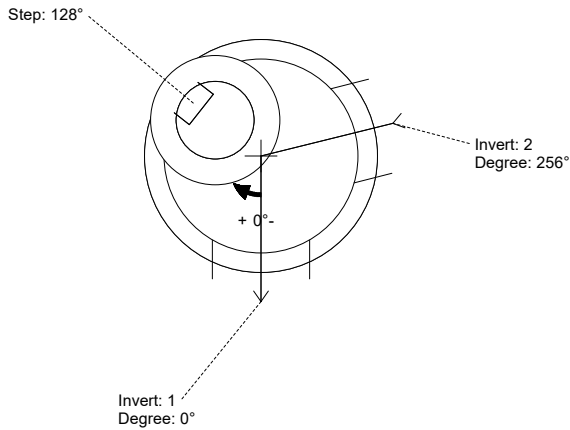
- REMAKE OF BASE (P1) ONLY
 - CASTING (P4), 4" GRADE RING (P3), & 13" FLAT LID (P2) ALREADY ON SITE

STRUCTURE SUMMARY:

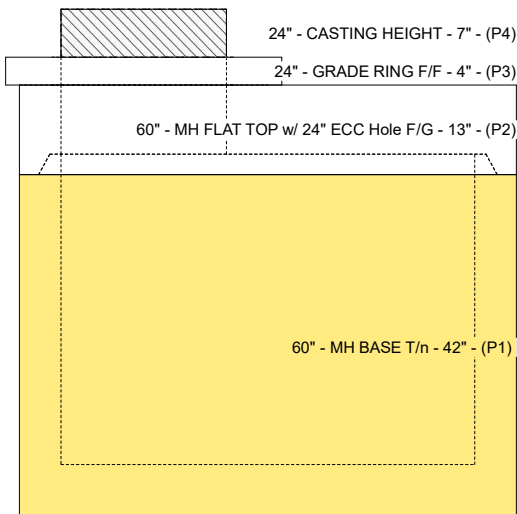
- P4) 24" - CASTING HEIGHT - 7"
 P3) 24" - GRADE RING F/F - 4"
 P2) 60" - MH FLAT TOP w/ 24" ECC Hole F/G - 13"
 P1) 60" - MH BASE T/n - 42"
 1) CASTING - JBS 1150 F/C STORM
 1) 60" - Conseal CS-102 1.00"
 2) Hole - 30
 3) MH Step ML-10-TDS-NCR - 10"

0 lb
 270 lb
 2869 lb
 6378 lb
 250 lb
 0 lb
 0 lb
 0 lb

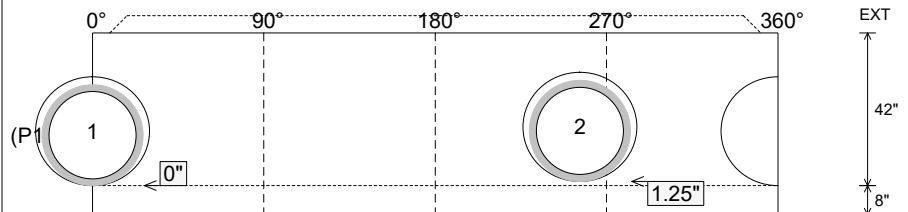
Structure Total: 9767 lb



Position	Elev	Angle	Pipe	Pipe OD	Hole	Connector	Up (")	Ref
Rim	521.57'							
Reducer								
Invert 1	516.2'	0°	24" HDPE	27.8"	30"	Hole 30	0"	P1
Invert 2	516.3'	256°	24" HDPE	27.8"	30"	Hole 30	1.25"	P1
Invert 3								
Invert 4								
Invert 5								
Invert 6								
Invert 7								
Invert 8								



Cast (Int. Dim.) - Interior Dimensions



Submittal Drawing
 4/8/2026 1:31:07 PM

SUBMITTAL
 APPROVED BY: