

Job Name: 25-1922 - Reynold's Farm
 Job Location: Goodlettsville, TN 37072
 Contractor: Josh King Excavation

Plant: Beaver Dam, KY
 1/8/2026 9:00:44 AM

Tech: K. Cardwell
 PC: J. Jarvis



Structure ID: C9.2

P1 MH048BA24

MH BASE T/n

- P4) 24" - CASTING HEIGHT - 7"
- P3) 24" - GRADE RING F/F - 4"
- P2) 48" - ECC CONE w/ 24" HOLE F/G - 30"
- P1) 48" - MH BASE T/n - 24"
- 1) CASTING - JBS 1150 F/C STORM
- 1) 48" - Conseal CS-102 1.00"
- 2) Hole - 18"
- 5) MH Step ML-10-TDS-NCR - 10"

0 lb
 270 lb
 2050 lb
 2789 lb
 250 lb
 0 lb
 0 lb
 0 lb

 Structure Total: 5359 lb

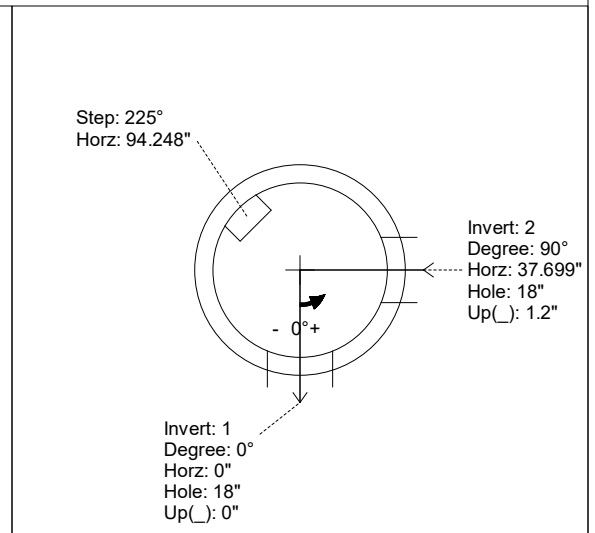
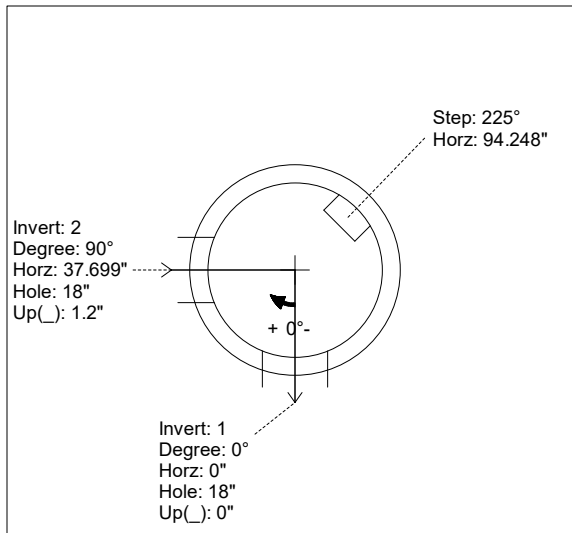
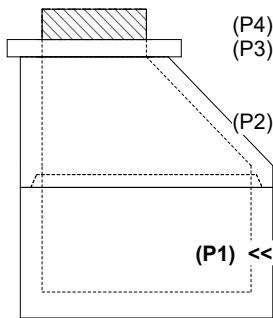
- Structure Notes:**
1. PER ASTM C-478 SPECS
 2. CONCRETE: 4,000 PSI AT 28 DAYS
 3. REINFORCEMENT: PER ASTM A615
 4. STEPS AT 225 DEGREES
 5. JBS 1150 FRAME & COVER "STORM" SUPPLIED BY ICAST

Rim: 531' Rim to Invert: 5.4' Slack: 1.8" Sump: 2" Step Position: 225°

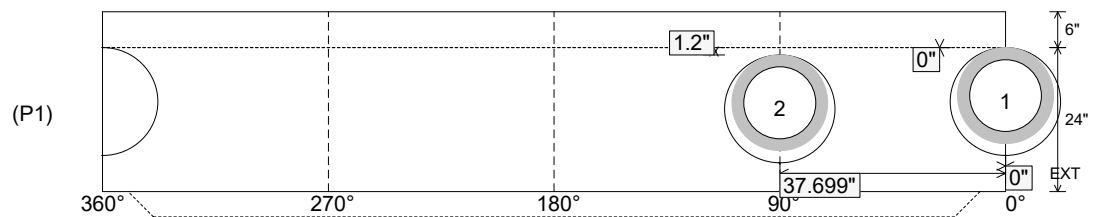
Position	Elev	Angle	Ext. (cw)	Pipe	Pipe OD	Connector	Hole	Horz Size	Up ()	Offset
Invert 1	525.6'	0°	0"	12" RCP B WALL	16"	Hole 18	18"	18.451"	0"	0"
Invert 2	525.7'	90°	45.553"	12" RCP B WALL	16"	Hole 18	18"	18.451"	1.2"	0"
Invert 3										
Invert 4										
Invert 5										
Invert 6										
Invert 7										
Invert 8										

RIGHT-SIDE UP VIEW (int. dimensions)

UPSIDE-DOWN VIEW (int. dimensions)



INSIDE WALL DIMENSIONS



Coating (Int):
 Coating (Ext):

Seam Up: Tongue
 Seam Dn: n/a

Wall Thickness: 5"
 Floor Height: 6"

Height (Int): 24"
 Height (Ext): 30"

Weight (Net): 2789 lb
 Volume (Net): 0.71cu.yd