

Job Name: 25-1922 - Reynold's Farm
 Job Location: Goodlettsville, TN 37072
 Contractor: Josh King Excavation

Plant: Beaver Dam, KY
 1/8/2026 9:01:34 AM

Tech: K. Cardwell
 PC: J. Jarvis



Structure ID: C6

P2 MH048LD12-28SQ

MH FLAT TOP w/28"x28" Hole F/G

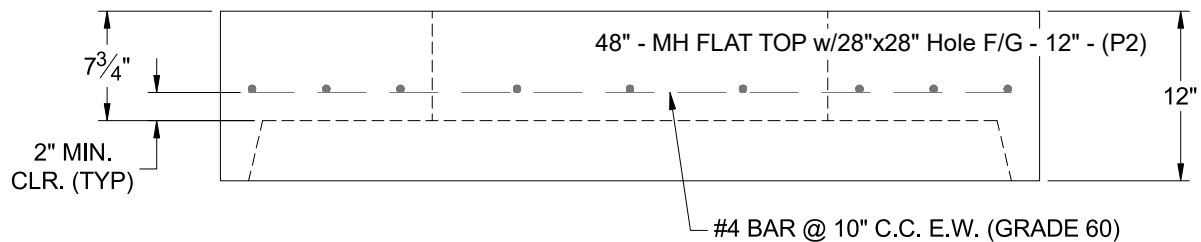
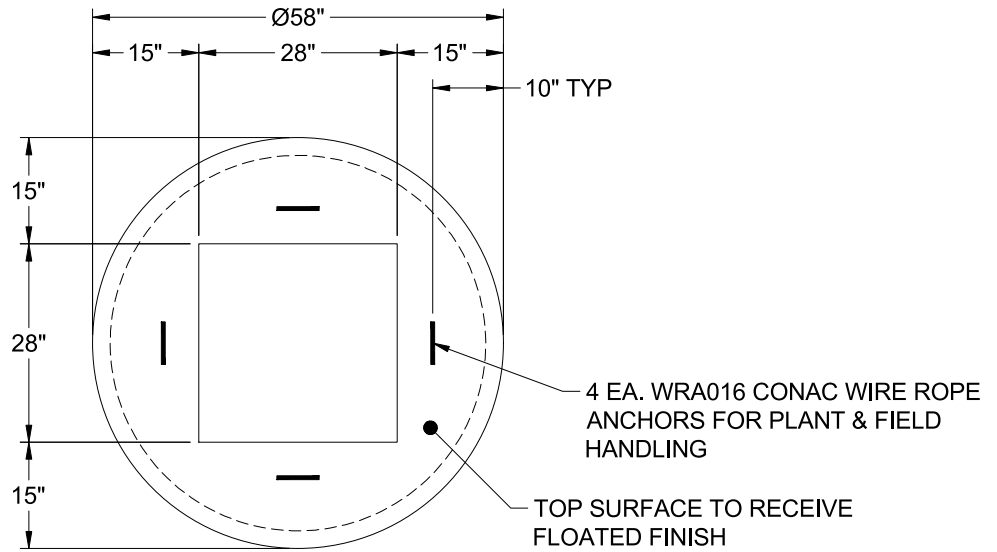
- P3) 28" x 28" - CASTING HEIGHT - 7.50"
- P2) 48" - MH FLAT TOP w/28"x28" Hole F/G - 12"
- P1) 48" - MH BASE Custom Ht T/n - 41"
- 1) CASTING - JBS 3300 SET (F/G/H)
- 1) 48" - Conseal CS-102 1.00"
- 1) 28" x 28" - Conseal CS-102 1.00"
- 2) Hole - 32
- 3) MH Step ML-10-TDS-NCR - 10"

0 lb
 1368 lb
 3468 lb
 500 lb
 0 lb
 0 lb
 0 lb
 0 lb

 5336 lb

Structure Total:

- Structure Notes:**
1. PER ASTM C-478 SPECS
 2. CONCRETE: 4,000 PSI AT 28 DAYS
 3. REINFORCEMENT: #4 BAR @ 10" C.C. E.W. (GRADE 60) - 2" MIN. REBAR CLEARANCE (TYP)
 4. STEPS AT 103 DEGREES
 5. JBS 3300 FRAME, GRATE, & CURB HOOD SUPPLIED BY ICAST
 6. LIFTERS: 4 EA. WRA016 CONAC WIRE ROPE ANCHORS FOR PLANT & FIELD HANDLING



| | | | | |
|----------------------------------|----------------------------------|--------------------|-------------------|--|
| Coating (Int): Coating (Ext): | Seam Up: Flat Seam Dn: Groove | Wall Thickness: 5" | Height (Ext): 12" | Weight (Net): 1368 lb Volume (Net): 0.35cu.yd |
|----------------------------------|----------------------------------|--------------------|-------------------|--|