

Job Name: 25-1922 - Reynold's Farm
 Job Location: Goodlettsville, TN 37072
 Contractor: Josh King Excavation

Plant: Beaver Dam, KY
 1/8/2026 9:01:32 AM

Tech: K. Cardwell
 PC: J. Jarvis



Structure ID: C1.2

P2 MH060TS08-48CC

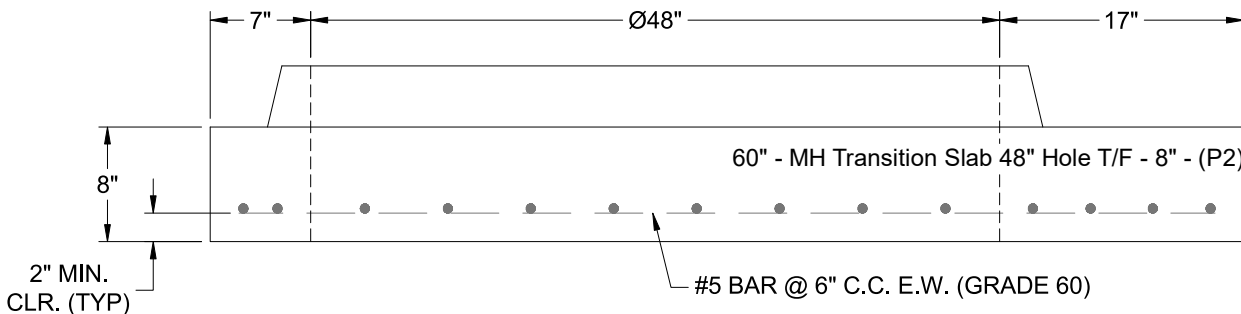
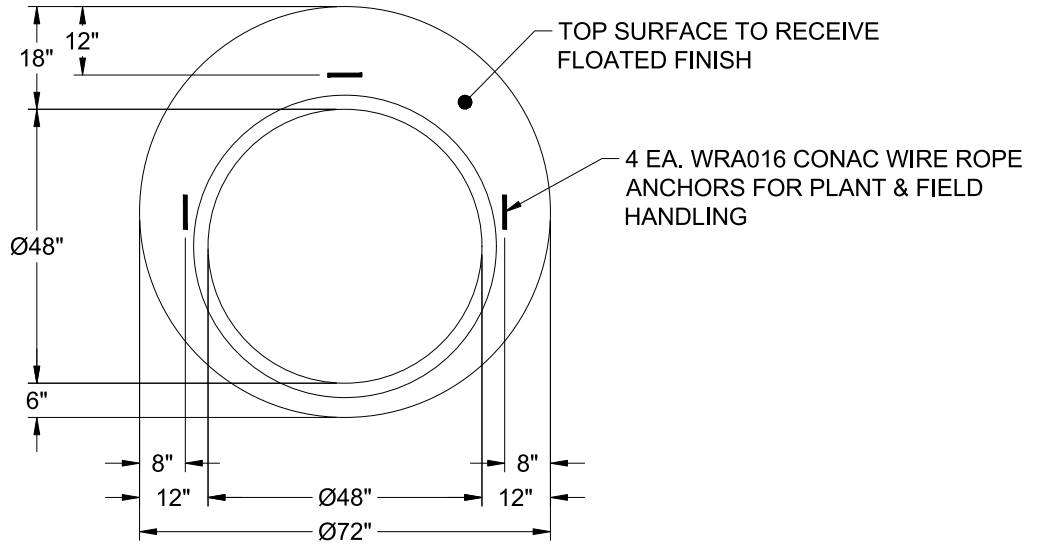
MH Transition Slab 48" Hole T/F

- P4) 24" - CASTING HEIGHT - 7"
- P3) 48" - ECC CONE w/ 24" HOLE F/G - 36"
- P2) 60" - MH Transition Slab 48" Hole T/F - 8"
- P1) 60" - MH BASE Custom Ht F/n - 47"
- 1) CASTING - JBS 1150 F/C STORM
- 1) 60" - Conseal CS-102 1.00"
- 1) 48" - Conseal CS-102 1.00"
- 2) Hole - 32
- 7) MH Step ML-10-TDS-NCR - 10"

0 lb
 3000 lb
 1570 lb
 6793 lb
 250 lb
 0 lb
 0 lb
 0 lb
 0 lb
 0 lb

 Structure Total: 11613 lb

- Structure Notes:**
1. PER ASTM C-478 SPECS
 2. CONCRETE: 4,000 PSI AT 28 DAYS
 3. REINFORCEMENT: #5 BAR @ 6" C.C. E.W. (GRADE 60) - 2" MIN. REBAR CLEARANCE (TYP)
 4. STEPS AT 220 DEGREES
 5. JBS 1150 FRAME & COVER "STORM" SUPPLIED BY ICAST
 6. LIFTERS: 3 EA. WRA016 CONAC WIRE ROPE ANCHORS FOR PLANT & FIELD HANDLING



Coating (Int): Coating (Ext):	Seam Up: Tongue Seam Dn: Flat	Wall Thickness: 6"	Height (Ext): 8"	Weight (Net): 1570 lb Volume (Net): 0.4cu.yd
----------------------------------	----------------------------------	--------------------	------------------	---