

Job Name: 25-1862 Commerce Drive Extension	Plant: Beaver Dam	Tech: J. Coppage	
Job Location: Elizabethtown, KY Contractor: Dirt Works Unlimited, LLC.	11/26/2025 9:40:32 AM	PC: C. Goff	

Structure ID: 48+30 RT (KYTC CBI TY A)

P1 BX2436-08BVF

BOX BASE 8inW, 8inF, Variable Ht T/n

P3) 24" x 120" - CB INLET KY A 10' TOP RIGHT F/G - 10"	3398 lb
P2) 24" x 120" - CB INLET KY A 10' BOTTOM RIGHT T/G - 18"	5270 lb
P1) 24" x 36" - BOX BASE 8inW, 8inF, Variable Ht T/n - 41"	5276 lb
1) 24" x 36" - Conseal CS-102 1.00"	0 lb
1) Hole - 24"	0 lb
Structure Total:	13944 lb

Structure Notes:

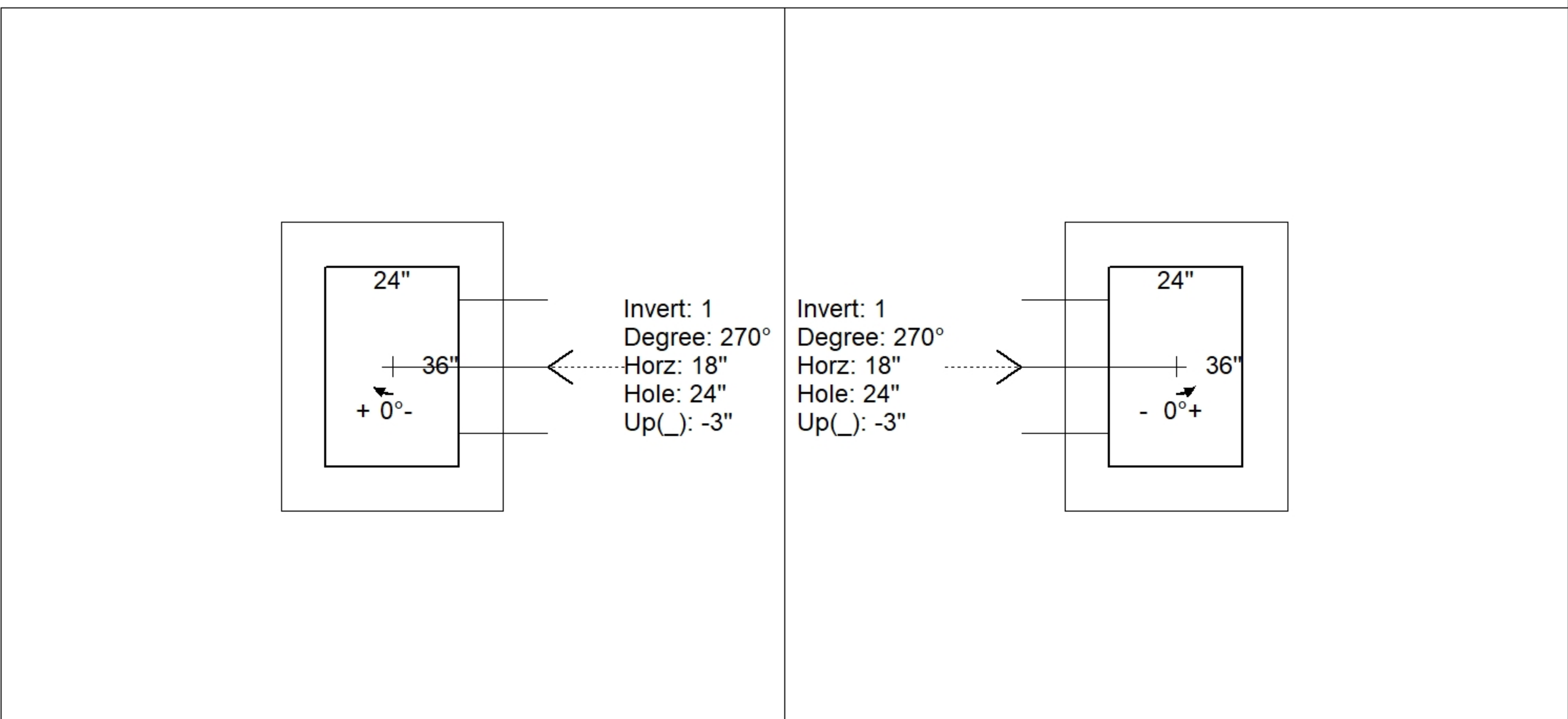
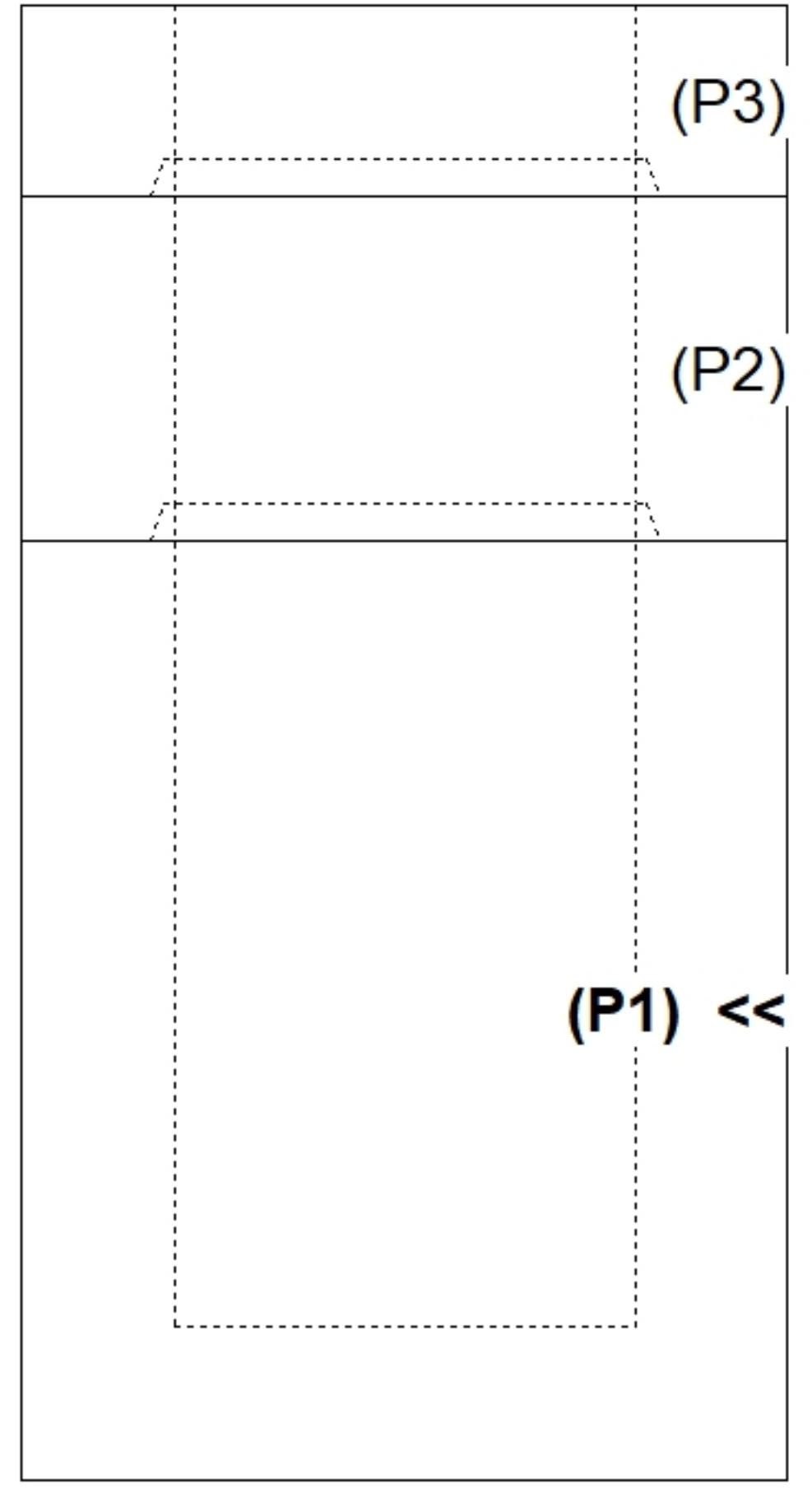
- JR HOE KY-206 PROVIDED BY ICAST.
- CASTING FRAME TO BE CAST INTO THE TOP PHASE.
- KYTC CBI TYPE A / ASTM C913 SPECIFICATIONS.
- CONCRETE = 4,500 PSI AT 28 DAYS.
- REINFORCING PER ASTM A615 (GRADE 60).
 - TOP PHASE (As .62) #5 BARS AT 6" C.C.E.W.
 - WALLS (As .31) #5 BARS AT 12" C.C.E.W.
 - FLOOR (As .31) #5 BARS AT 12" C.C.E.W.
- RIM ELEVATION EQUALS THROAT ELEVATION + 8"

Rim: 760.19' Rim to Invert: 5.75' Slack: 0" Sump: 0" Step Position:

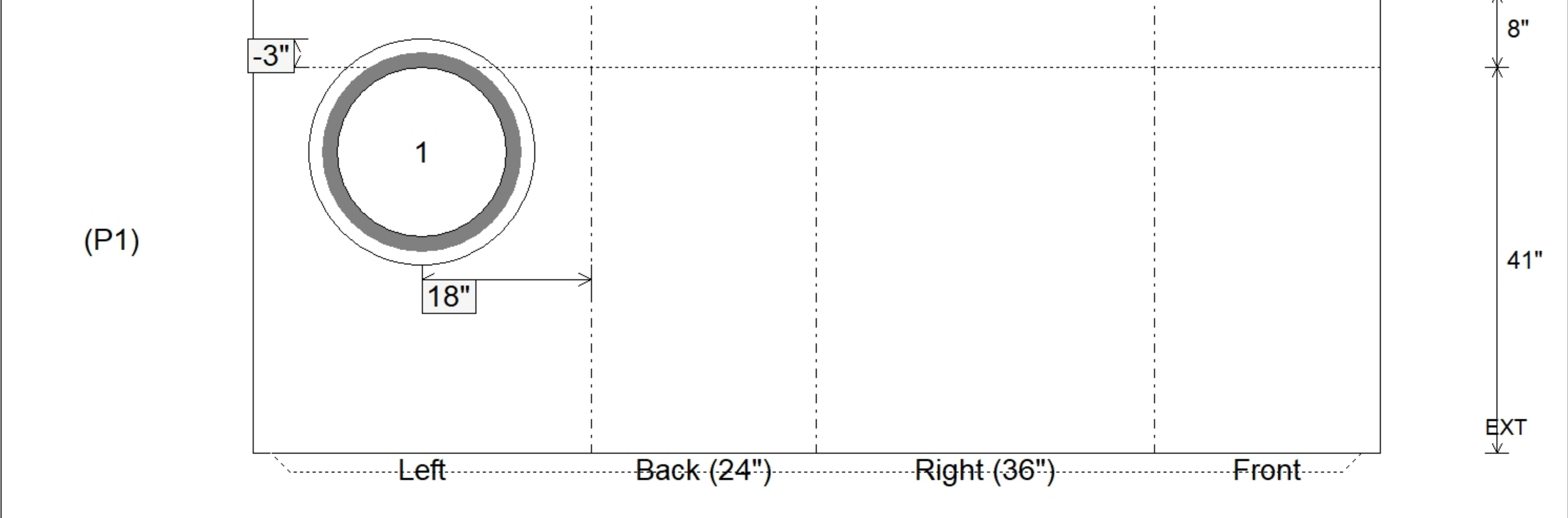
Position	Elev	Angle	Ext. (cw)	Pipe	Pipe OD	Connector	Hole	Horz Size	Up ()	Offset
Invert 1	754.44'	270°	26"	18" HDPE	21.2"	Hole 24	24"	24"	-3"	0"
Invert 2										
Invert 3										
Invert 4										
Invert 5										
Invert 6										
Invert 7										
Invert 8										

RIGHT-SIDE UP VIEW (int. dimensions)

UPSIDE-DOWN VIEW (int. dimensions)



INSIDE WALL DIMENSIONS



Coating (Int):	Seam Up: Tongue	Wall Thickness: 8"	Height (Int): 41"	Weight (Net): 5276 lb
Coating (Ext):	Seam Dn: n/a	Floor Height: 8"	Height (Ext): 49"	Volume (Net): 1.35cu.yd